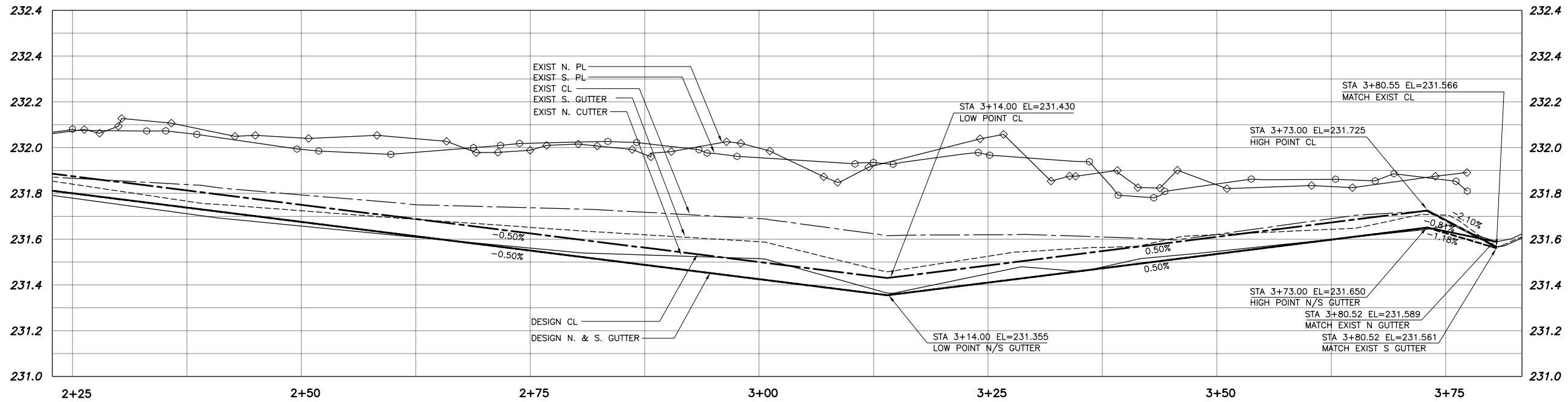


NOTES:

1. BASELINE IS NORTH PROPERTY LINE OF ROSEDALE AVE.
2. THE INTERSECTION OF THE NORTH PROPERTY LINE OF NASSU AVE. AND THE EAST PROPERTY LINE OF NASSU ST. IS STA. 1+00
3. ALL ROADWAY MEASUREMENTS ARE TO BACK FACE OF CURB.
4. ADJUST EXIST MH'S AND CB'S TO NEW GRADES.
5. PLUG SUBDRAINS AT TERMINAL ENDS

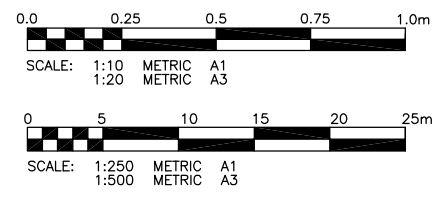
GEODETIC MONUMENT PROTECTION

CONTACT WINNIPEG GEOMATICS BRANCH A MINIMUM OF 3 WORKING DAYS PRIOR TO CONSTRUCTION.



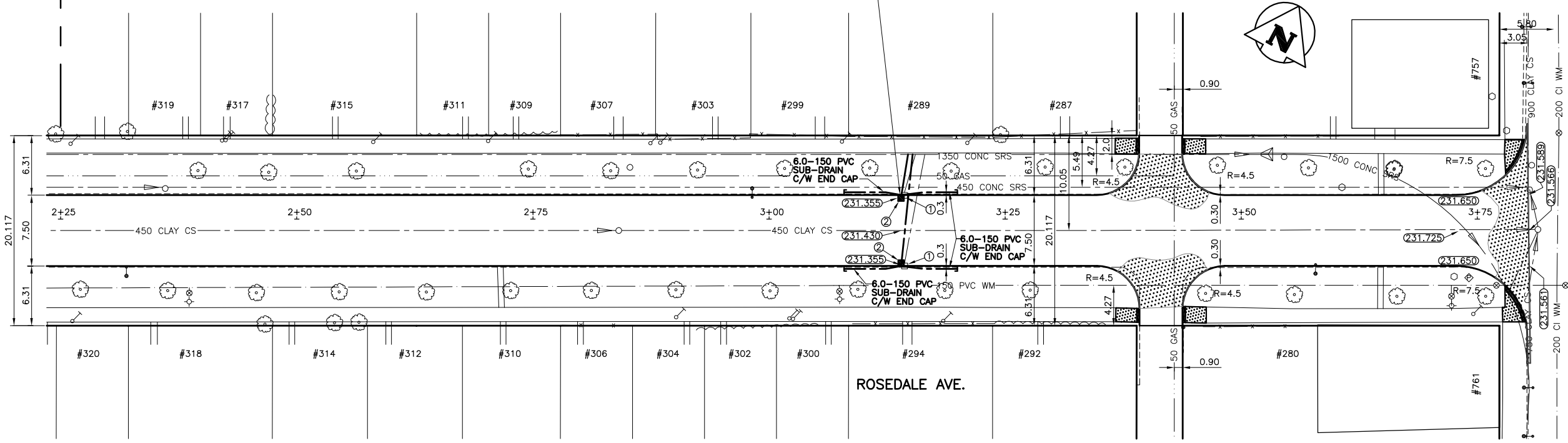
NOTE:
SEE DWG 0005 FOR TYPICAL ROAD CROSS SECTION

NOTE:
SEE CB DETAIL ON DWG 0010 FOR SUB-DRAIN TO CB TIE-IN INSTRUCTIONS



MATCH LINE
STA 2+25

LIMIT OF CONST.
STA 3+80.55



LAND DRAINAGE REMOVAL & INSTALLATION DIRECTIONS
 ① REMOVE EXIST CURB INLET, ABANDON EXIST CB & PLUG EXIST CB LEADS.
 ② INSTALL NEW CB AND CB LEAD

PROPERTY LIMITS DELINEATION
 DELINEATION OF PROPERTY LIMITS AS SHOWN ON THIS DWG DOES NOT REPRESENT A "LEGAL SURVEY". KGS GROUP MAKES NO REPRESENTATION OR WARRANTY AS TO THE ACCURACY OF PROPERTY LIMITS DELINEATED ON THIS DWG, NOR ON THE DIMENSIONAL ACCURACY OF DWG FEATURES RELATIVE TO THOSE PROPERTY LIMITS.

WARNING
 1. NOTIFY THE GAS COMPANY OF THE PROPOSED LOCATION OF EXCAVATION.
 2. TAKE PRECAUTION TO AVOID DAMAGE TO GAS COMPANY INSTALLATIONS.
 3. SEE PROVINCIAL REGULATION 210/72 FOR DETAILS.

METRIC
 WHOLE NUMBERS INDICATE MILLIMETRES
 DECIMALIZED NUMBERS INDICATE METRES



300 LBS	LAND DRAINAGE SEWER	300 LBS		TEST HOLE	
250 WWS	WASTE WATER SEWER	250 WWS		GUY WIRE	
---	GAS	---		LIGHT STANDARD	
---	HYDRO	---		BACK OF CURB	
---	M.T.S.	---		CONCRETE	
150 WM	WATERMAIN	150 WM		ASPHALT	
+	HYDRANT	+		SIDEWALK	
+	VALVE	+		PROPERTY LINE	
○	MANHOLE	○		SURVEY BAR	
□	CATCH BASIN	□		GEODETIC BENCHMARK	
▽	CURB INLET	▽		ELEVATION	(32.231)
•	POLES	•			
EXISTING	LEGEND-PLAN	PROPOSED	EXISTING	LEGEND-PLAN	PROPOSED

LOCATION APPROVED UNDERGROUND STRUCTURES
 SUPV. U/G STRUCTURES COMMITTEE DATE
 NOTE:
 LOCATION OF UNDERGROUND STRUCTURES AS SHOWN ARE BASED ON THE BEST INFORMATION AVAILABLE BUT NO GUARANTEE IS GIVEN THAT ALL EXISTING UTILITIES ARE SHOWN OR THAT THE GIVEN LOCATIONS ARE EXACT. CONFIRMATION OF EXISTENCE AND EXACT LOCATION OF ALL SERVICES MUST BE OBTAINED FROM THE INDIVIDUAL UTILITIES BEFORE PROCEEDING WITH CONSTRUCTION.

B.M. 53-021
 ELEV. 232.577
 N.E. COR. BERESFORD AVE. & NASSAU ST. S. TBLT. IN S. CONC. FOUNDATION OF NO. 925 BERESFORD AVE. 1.2m E. & 0.2m BELOW BRICK FROM THE MOST S. WLY. COR. OF BLDG. (ROSEDALE UNITED CHURCH).

KGS GROUP CONSULTING ENGINEERS & PROJECT MANAGERS
 WINNIPEG (204) 896-1209
 THUNDER BAY (807) 345-2233

DESIGNED BY B.M. CHECKED BY R.J.H.
 DRAWN BY D.W. APPROVED BY
 HOR. SCALE: 1:250
 VERTICAL: 1:50
 0 ISSUED FOR TENDER 08/04/08 RJH
 NO. REVISIONS DATE BY DATE 25/01/08

ENGINEER'S SEAL

 CONSULTANT DRAWING NO. 07-0107-23

THE CITY OF WINNIPEG PUBLIC WORKS DEPARTMENT ENGINEERING SERVICES DIVISION

PROJECT TITLE: **ROSEDALE AVENUE STREET RECONSTRUCTION**
 NASSU ST. TO OSBORNE ST.
 STA 2+25.00 TO STA 3+80.55

SHEET 06 OF 10
 COMPUTER FILE NAME: ROSEDALE PLOT
 CITY DRAWING NUMBER: 0006

PROJECTS\2007\07-0107-23\WUN\DWGS\ROSEDALE AVE-RECON\ROSEDALE PLOT.DWG
 PLOT 1:1 A-1