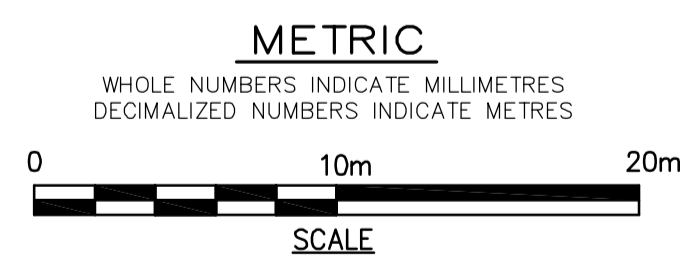
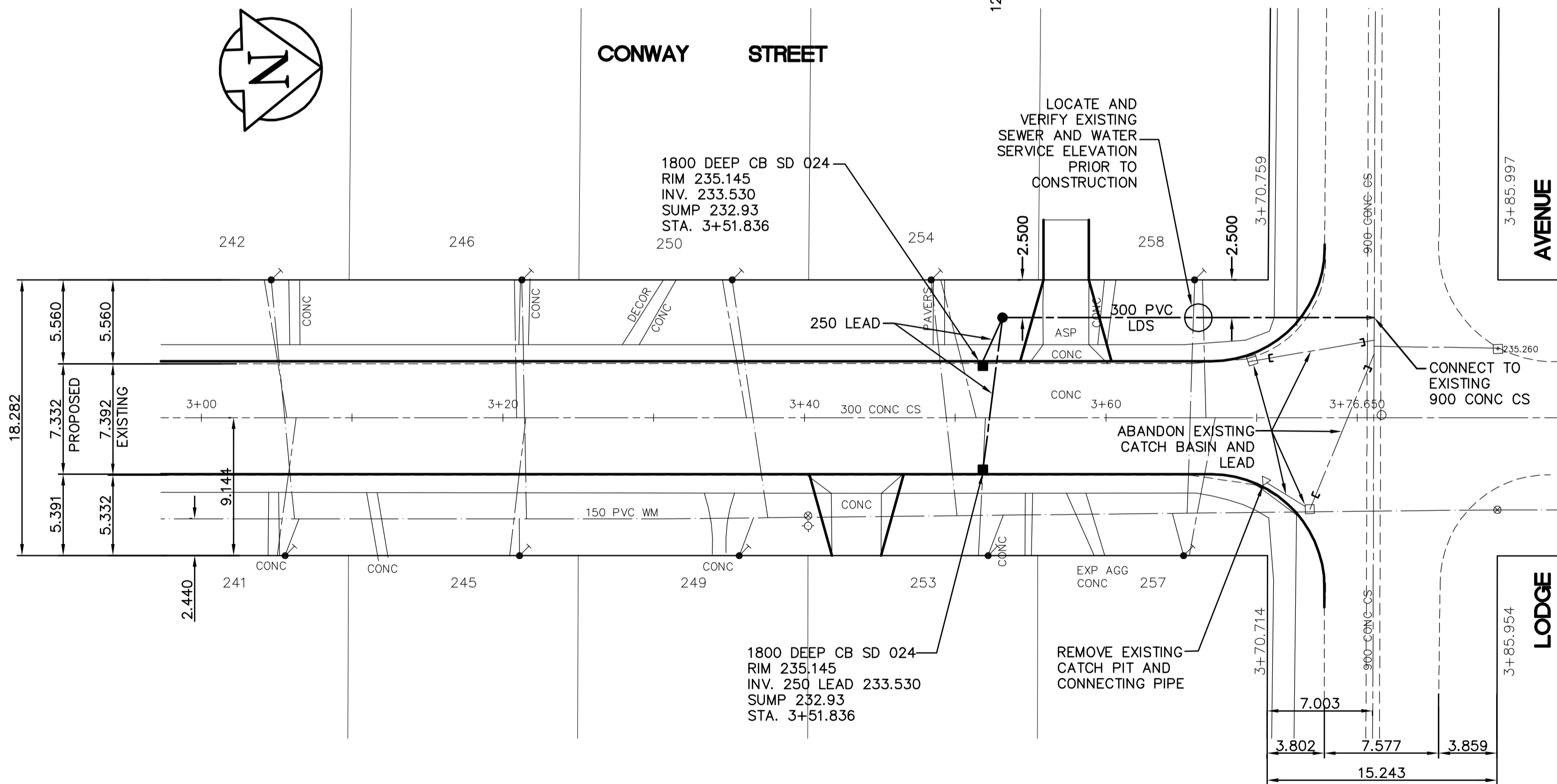


CONSTRUCTION NOTES:

1. EXPOSE ALL PIPING AND CONFIRM LOCATION AND INVERTS PRIOR TO CONSTRUCTION
2. INSTALL NEW LDS BY TRENCHLESS METHODS
3. ALL MATERIAL AND CONSTRUCTION SHALL CONFORM TO CITY OF WINNIPEG STANDARD CONSTRUCTION SPECIFICATIONS
4. LOCATION OF SEWER AND WATER SERVICES SHOWN ON DRAWING ARE APPROXIMATE. FIELD LOCATE PRIOR TO CONSTRUCTION
5. BACKFILL UNDER OR WITHIN 1.0m OF EXISTING OR PROPOSED PAVEMENTS SHALL BE CLASS 3. ALL OTHER BACKFILL SHALL BE CLASS 5



150 mm W.M.	WATERMAIN	150 mm W.M.	HYDRO	150 mm W.M.	WATERMAIN
Hydrant symbol	HYDRANT	Hydrant symbol	TELEPHONE	Hydrant symbol	HYDRANT
Valve symbol	VALVE	Valve symbol	CONCRETE	Valve symbol	VALVE
Land Drainage Sewer symbol	LAND DRAINAGE SEWER	Land Drainage Sewer symbol	ASPHALT	Land Drainage Sewer symbol	LAND DRAINAGE SEWER
Wastewater Sewer symbol	WASTEWATER SEWER	Wastewater Sewer symbol	PROPERTY LINE	Wastewater Sewer symbol	WASTE WATER SEWER
Manhole symbol	MANHOLE	Manhole symbol	SURVEY BAR	Manhole symbol	Q PROFILE
Catch Basin symbol	CATCH BASIN	Catch Basin symbol	CURB STOP	Catch Basin symbol	
Curb Inlet symbol	CURB INLET	Curb Inlet symbol	TREE	Curb Inlet symbol	
Junctions symbol	JUNCTIONS	Junctions symbol	ANODE	Junctions symbol	
Culvert symbol	CULVERT	Culvert symbol	CONCRETE SIDEWALK	Culvert symbol	
Gas symbol	GAS	Gas symbol	FENCE	Gas symbol	
Existing Legend	LEGEND - PLAN	Proposed Legend	LEGEND - PLAN	Existing Legend	LEGEND - PROFILE
Proposed Legend	LEGEND - PLAN	Proposed Legend	LEGEND - PROFILE	Proposed Legend	LEGEND - PROFILE

LOCATION APPROVED UNDERGROUND STRUCTURES

SUPV. U/G STRUCTURES COMMITTEE DATE

NOTE:

LOCATION OF UNDERGROUND STRUCTURES AS SHOWN ARE BASED ON THE BEST INFORMATION AVAILABLE. BUT NO GUARANTEE IS GIVEN THAT ALL EXISTING UTILITIES ARE SHOWN OR THAT THE GIVEN LOCATIONS ARE EXACT. CONFIRMATION OF EXISTENCE AND EXACT LOCATION OF ALL SERVICES MUST BE OBTAINED FROM THE INDIVIDUAL UTILITIES BEFORE PROCEEDING WITH CONSTRUCTION.

B.M. 39-007 Tilt in Conc. platform of pumphouse, S. of Portage Ave. @ Conway St., 0.4m S.W. of N.E. Cor. of platform. ELEV. 236.708

0	ISSUED FOR TENDER	08/05/13	DR
A	ISSUED FOR REVIEW	08/04/11	DR
NO.	REVISIONS	DATE	BY
		2008/02/26	

EARTH TECH
 A tyco INTERNATIONAL LTD. COMPANY
 Earth Tech (Canada) Inc. Winnipeg, Manitoba 204.477.5381

DESIGNED BY	GSK	CHECKED BY	
DRAWN BY	DR	APPROVED BY	
HOR. SCALE:	1:250	RELEASED FOR CONSTRUCTION BY:	
VERTICAL SCALE:	1:50	DATE	2008/02/26

ENGINEER'S SEAL
 PROVINCE OF MANITOBA
 ORIGINAL SIGNED
 K.W.
 FITCHETT
 MAY 13/08
 REGISTERED PROFESSIONAL ENGINEER
 CONSULTANT DRAWING NO. CU-01

THE CITY OF WINNIPEG
 Winnipeg WATER AND WASTE DEPARTMENT

CONWAY STREET
 LODGE AVENUE TO PORTAGE AVENUE

LAND DRAINAGE SEWER
 PLAN PROFILE
 LODGE AVE TO 25m SOUTH OF LODGE AVE.

SHEET 1 OF 1
 CITY DRAWING NUMBER LD-4999