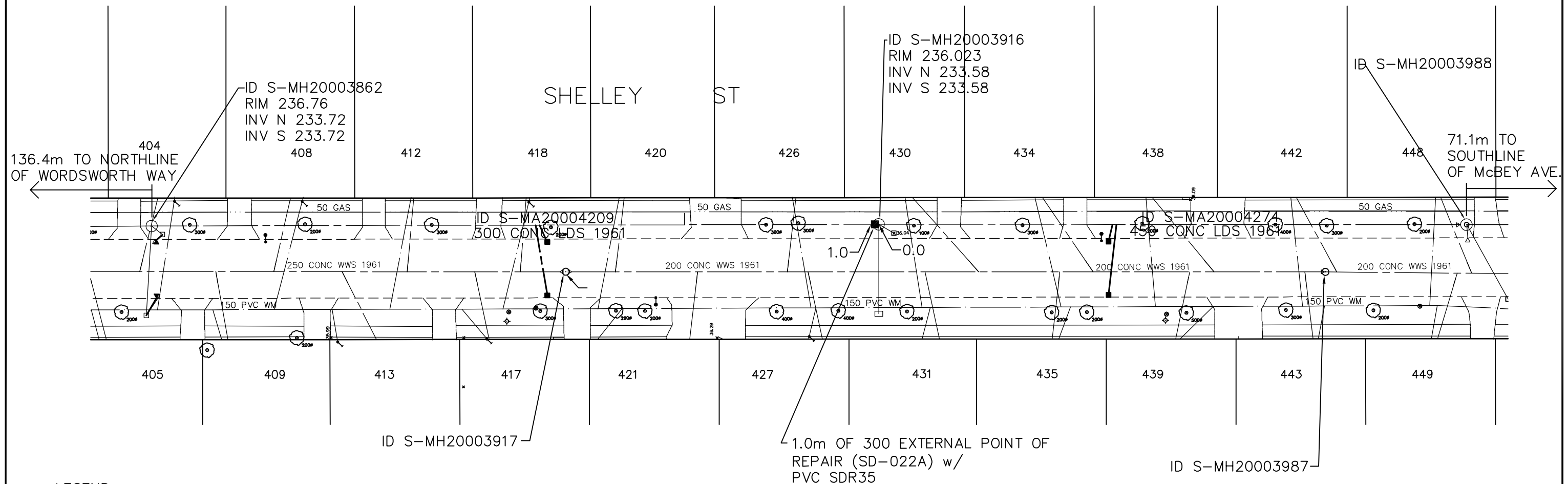
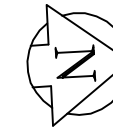


**NOTES:**

1. CONTRACTOR TO VERIFY LIMITS OF SEWER REPAIRS PRIOR TO EXCAVATION BY MEANS OF VIDEO INSPECTION.
2. CONTRACTOR TO PROVIDE VIDEO INSPECTION OF SEWER SERVICES WITHIN LIMITS OF REPAIR IN PRESENCE OF CONTRACT ADMINISTRATOR TO DETERMINE IF SERVICE RENEWAL IS REQUIRED.
3. ALL BACKFILL TO BE CLASS 5 BACKFILL UNDER BOULEVARDS AND CLASS 3 UNDER OR WITHIN 1.0m OF PAVEMENTS AND SIDEWALKS.



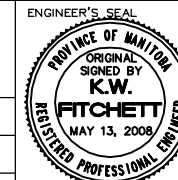
**LEGEND**

↖ 52.0 MEASUREMENT TO REPAIR FROM REFERENCE MH SHOWN THUS... ↗ 0.0

**METRIC**

WHOLE NUMBERS INDICATE MILLIMETRES  
DECIMALIZED NUMBERS INDICATE METRES

B.M. 14.5m Cor. McBeay Ave. at 10th St. E. 11th St. on top of 0.25m dia. x 2.4m high pipe, 5.4m N. of C.C. Conc. Pavt. of Shelley Ave. ELEV. 212.25 N. of C.C. Conc. Pavt. of 10th St. or 13.16 N. of S.L. McBeay Ave. at 10th St.



DESIGNED BY	PL	CHECKED BY	...
DRAWN BY	DR	APPROVED BY	...
HOR. SCALE: 1:500		RELEASED FOR CONSTRUCTION BY:	
VERTICAL:			
0 ISSUED FOR TENDER	08/05/13		
A ISSUED FOR REVIEW	08/04/11		
NO. REVISIONS	DATE	BY	DATE
			2008/01/14

CONSULTANT DRAWING NO. CU-02

2008 STREET RENEWALS  
SEWER REPAIRS  
SHELLEY STREET  
WORDSWORTH WAY TO  
MCBEAY AVENUE

CITY FILE NUMBER  
SHEET OF

CITY DRAWING NUMBER