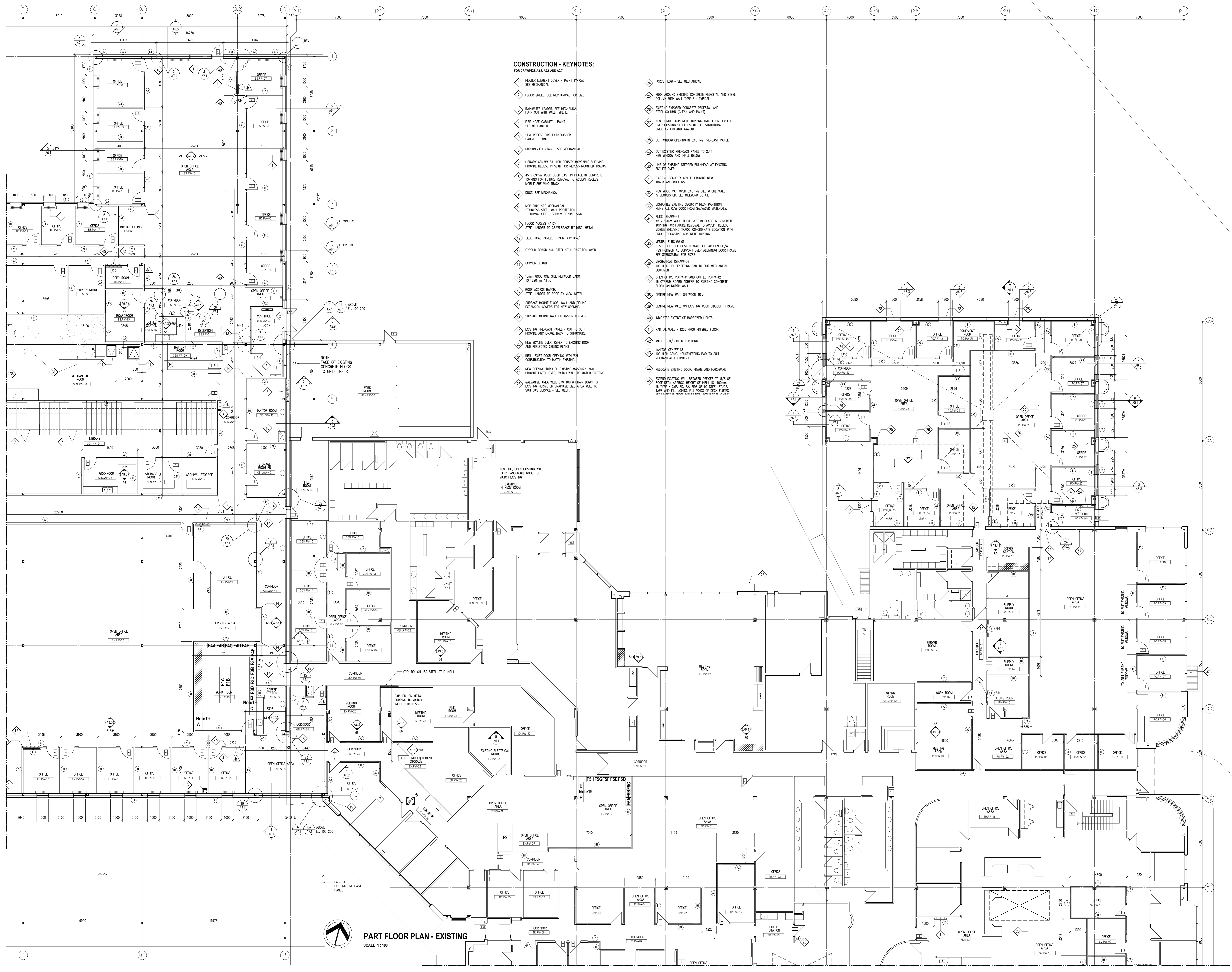


**CONSTRUCTION - KEYNOTES:**  
 FOR DRAWINGS A2.5, A2.6 AND A2.7

- 1 HEATER ELEMENT COVER - PAINT TYPICAL SEE MECHANICAL
- 2 FLOOR GRILLE - SEE MECHANICAL FOR SIZE
- 3 RAINWATER LEADER - SEE MECHANICAL FABR CUT WITH WALL FIRE
- 4 FIRE HOSE CABINET - PAINT SEE MECHANICAL
- 5 SEM RECESS FIRE EXTINGUISHER CABINET - PAINT
- 6 DRINKING FOUNTAIN - SEE MECHANICAL
- 7 LIBRARY GEN-W-04 HIGH DENSITY MOBILE SHELVING PROVIDE RECESS IN SLAB FOR RECESS W/ TRACKS
- 8 45 x 80mm WOOD BLOCK CAST IN PLACE IN CONCRETE TOPPING FOR FUTURE REMOVAL TO ACCEPT RECESS MOBILE SHELVING TRACK
- 9 DUCT - SEE MECHANICAL
- 10 MOP SINK SEE MECHANICAL STAINLESS STEEL WALL PROTECTION - 900mm A.F.F., 300mm BEYOND SINK
- 11 FLOOR ACCESS HATCH: STEEL LADDER TO ROOF BY MISC. METAL
- 12 ELECTRICAL PANELS - PAINT (TYPICAL)
- 13 GYPSUM BOARD AND STEEL STUD PARTITION OVER
- 14 CORNER GUARD
- 15 15mm GOOD ONE SIDE PLYWOOD DAPO TO 1200mm A.F.F.
- 16 ROOF ACCESS HATCH: STEEL LADDER TO ROOF BY MISC. METAL SURFACE MOUNT FLOOR, WALL AND CEILING EXPANSION COVERS FOR NEW OPENING
- 17 SURFACE MOUNT WALL EXPANSION CURVES
- 18 EXISTING PRE-CAST PANEL - CUT TO SUIT PROVIDE ANCHORAGE BACK TO STRUCTURE
- 19 NEW SHUTILE OVER REFER TO EXISTING ROOF AND REFLECTED CEILING PLANS
- 20 INTILL EXIST DOOR OPENING WITH WALL CONSTRUCTION TO MATCH EXISTING
- 21 NEW OPENING THROUGH EXISTING MASONRY WALL PROVIDE Lintel OVER, PATCH WALL TO MATCH EXISTING
- 22 GALVANIZE AREA WELL C/W 100 x BRAN DOWN TO EXISTING PERIMETER DRAINAGE SIZE AND MAKE WELL TO SUIT GAS SERVICE - SEE MECH.
- 23 FORCE FLOW - SEE MECHANICAL
- 24 FURR AROUND EXISTING CONCRETE PEDESTAL AND STEEL COLUMN WITH WALL TYPE E - TYPICAL
- 25 EXISTING EXPOSED CONCRETE PEDESTAL AND STEEL COLUMN (CLEAN AND PAINT)
- 26 NEW FINISHED CONCRETE TOPPING AND FLOOR LEVELLER OVER EXISTING SLOPED SLAB. SEE STRUCTURAL CROSS ST-4102 AND ST-4103
- 27 CUT WINDOW OPENING IN EXISTING PRE-CAST PANEL
- 28 CUT EXISTING PRE-CAST PANEL TO SUIT NEW WINDOW AND INELL BELOW
- 29 LINE OF EXISTING STEPPED BALKHEAD AT EXISTING SKYLITE OVER
- 30 EXISTING SECURITY GRILLE. PROVIDE NEW TRACK AND BOLDS.
- 31 NEW WOOD CAP OVER EXISTING SILL WHERE WALL IS DEMOLISHED. SEE WALLWORK DETAIL
- 32 DISMANTLE EXISTING SECURITY MESH PARTITION REINSTALL C/W DOOR FROM SALVAGED MATERIALS
- 33 FLEES EN-W-48 45 x 80mm WOOD BLOCK CAST IN PLACE IN CONCRETE TOPPING FOR FUTURE REMOVAL TO ACCEPT RECESS MOBILE SHELVING TRACK. CO-ORDINATE LOCATION WITH PROSP TO CASTING CONCRETE TOPPING
- 34 VESTIBULE GEN-W-01 HSS STEEL TUBE POST IN WALL AT EACH END C/W HSS HORIZONTAL SUPPORT OVER ALUMINUM DOOR FRAME SEE STRUCTURAL FOR SIZES
- 35 MECHANICAL GEN-W-30 100 HIGH HOOD/KEEPING PAD TO SUIT MECHANICAL EQUIPMENT
- 36 OPEN OFFICE POP-W-11 AND COFFEE POP-W-12 16 GYPSUM BOARD ADHERE TO EXISTING CONCRETE BLOCK ON NORTH WALL
- 37 CENTRE NEW WALL ON WOOD TRIM
- 38 CENTRE NEW WALL ON EXISTING WOOD SLEIGHT FRAME
- 39 INDICATE S DENT OF BORROWED LIGHTS
- 40 PARTIAL WALL - 1200 FROM FINISHED FLOOR
- 41 WALL TO 1/3 OF G.B. CEILING
- 42 JANITOR GEN-W-18 100 HIGH CUB. HOUSEKEEPING PAD TO SUIT MECHANICAL EQUIPMENT
- 43 RELOCATE EXISTING DOOR, FRAME AND HARDWARE
- 44 EXTEND EXISTING WALL BETWEEN OFFICES TO 1/3 OF ROOF BECK APPROX. HEIGHT OF INPELL IS 1100mm TO 1105 x COR. ED. EA. SIDE OF 02 STEEL STUDS. TARE AND FILL JOINTS. FILL Voids OF DECK FLUTES WITH CONCRETE. SEE STRUCTURAL DETAIL

SEE DRAWING A2.5 FOR CONTINUATION



**PART FLOOR PLAN - EXISTING**  
 SCALE 1:100

SEE DRAWING A2.7 FOR CONTINUATION

**AS BUILT DRAWING**  
 THE DRAWING AND ALL RELATED REVISED DRAWINGS DOCUMENTED BY CHANGES ORDERS, THE CONTRACTOR SHALL BE RESPONSIBLE FOR THE ACCURACY OF THIS DRAWING. THE CONTRACTOR SHALL BE RESPONSIBLE FOR THE ACCURACY OF THIS DRAWING. THE CONTRACTOR SHALL BE RESPONSIBLE FOR THE ACCURACY OF THIS DRAWING. THE CONTRACTOR SHALL BE RESPONSIBLE FOR THE ACCURACY OF THIS DRAWING.  
 November 2007

Drawings and specifications, as indicated or otherwise are the property of the architect. The copyright in the same being reserved to him. No reproduction may be made without the permission of the architect and when made must bear his name. All joints to be returned to the architect.  
 The contractor shall verify dimensions and data noted on drawings with conditions on the site and is held responsible for reporting any discrepancy to the architect for adjustment. This drawing shall not be used for building purposes until commensurate by.

THE CITY OF WINNIPEG

OFFICE ADDITION AND RENOVATION  
 1155 PACIFIC AVENUE  
 WINNIPEG, MANITOBA

FRIESEN TOKAR ARCHITECTS

MAIN FLOOR PLAN PART B **A2.6R1**