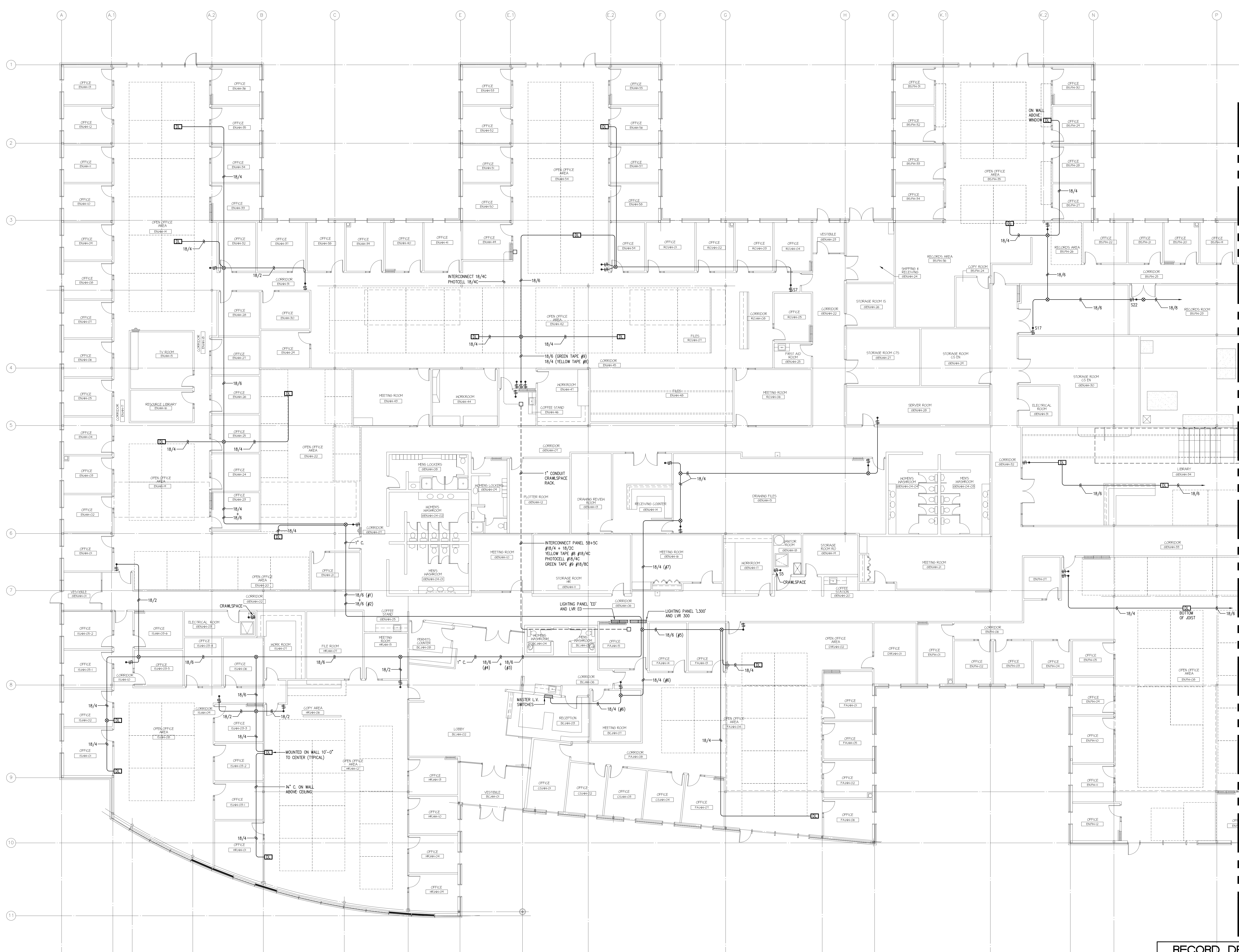


PROJECT NO:	AMP
DESIGNER:	CB
DATE:	MAY 2007
PROJECT NO.:	91716
FILE NO.:	
DATE:	AS BUILT JUNE 2007



FOR CONTINUATION REFER TO DRAWING E2.4

**SMS ENGINEERING**  
 SMS Engineering Ltd. Consulting Engineers  
 770 Bloor Street West, Toronto, Ontario M5S 1A5  
 Telephone: (416) 593-9291 Fax: (416) 593-9292  
 02-019-01

Drawings and specifications, as instruments of service are the property of the architect. The copyright in the same being reserved to him. No reproduction may be made without the permission of the architect and when made, must bear his name. All rights to be reserved to the architect. The contractor shall verify dimensions and data noted herein with conditions on the site and is held responsible for reporting any discrepancy to the architect for adjustment. This drawing shall not be used for building purposes until countersigned by:

THE CITY OF WINNIPEG  
 PROJECT TITLE  
 OFFICE ADDITION AND RENOVATION  
 1155 PACIFIC AVENUE  
 WINNIPEG, MANITOBA

**PART MAIN FLOOR PLAN - PART A - LOW VOLTAGE SWITCHING**  
 SCALE 1/100

**RECORD DRAWING**

CONTRACTOR: **Aleo Electrical Limited**  
 930 BRADFORD STREET  
 WINNIPEG, MANITOBA  
 (204) 697-1000

DATE COMPLETED: \_\_\_\_\_ SIGNED BY: \_\_\_\_\_

NOTES:  
 ① WASHROOM TO BE C/W CEILING MOUNTED DUAL-TEC SENSOR OCCUPANCY ON-OFF CONTROL OF LIGHTS.  
 ② LIGHTING LEVEL SENSOR AND OCCUPANCY SENSOR MOUNTED ON CEILING. PROGRAMMED TO TURN OFF ADJACENT FLOUORESCENT LIGHTS.  
 ③ VALANCE LIGHTING.

NOTE: THIS RECORD DRAWING HAS BEEN PREPARED BASED UPON INFORMATION FURNISHED BY OTHERS. WHILE THIS INFORMATION IS BELIEVED TO BE RELIABLE, THE CONSULTANT CANNOT ASSURE ITS ACCURACY, AND THIS IS NOT RESPONSIBLE FOR ANY ERRORS OR OMISSIONS WHICH MAY HAVE BEEN INCORPORATED INTO IT AS A RESULT.

**FRIESEN TOKAR ARCHITECTS**

CONTRACTOR: \_\_\_\_\_

DATE: \_\_\_\_\_

**MAIN FLOOR PLAN  
 PART A - LIGHTING  
 LOW VOLTAGE SWITCHING**

**E2.3.3**

20080313.DWG - JANUARY 30, 2008 - 3:50PM CST - SMM/STW