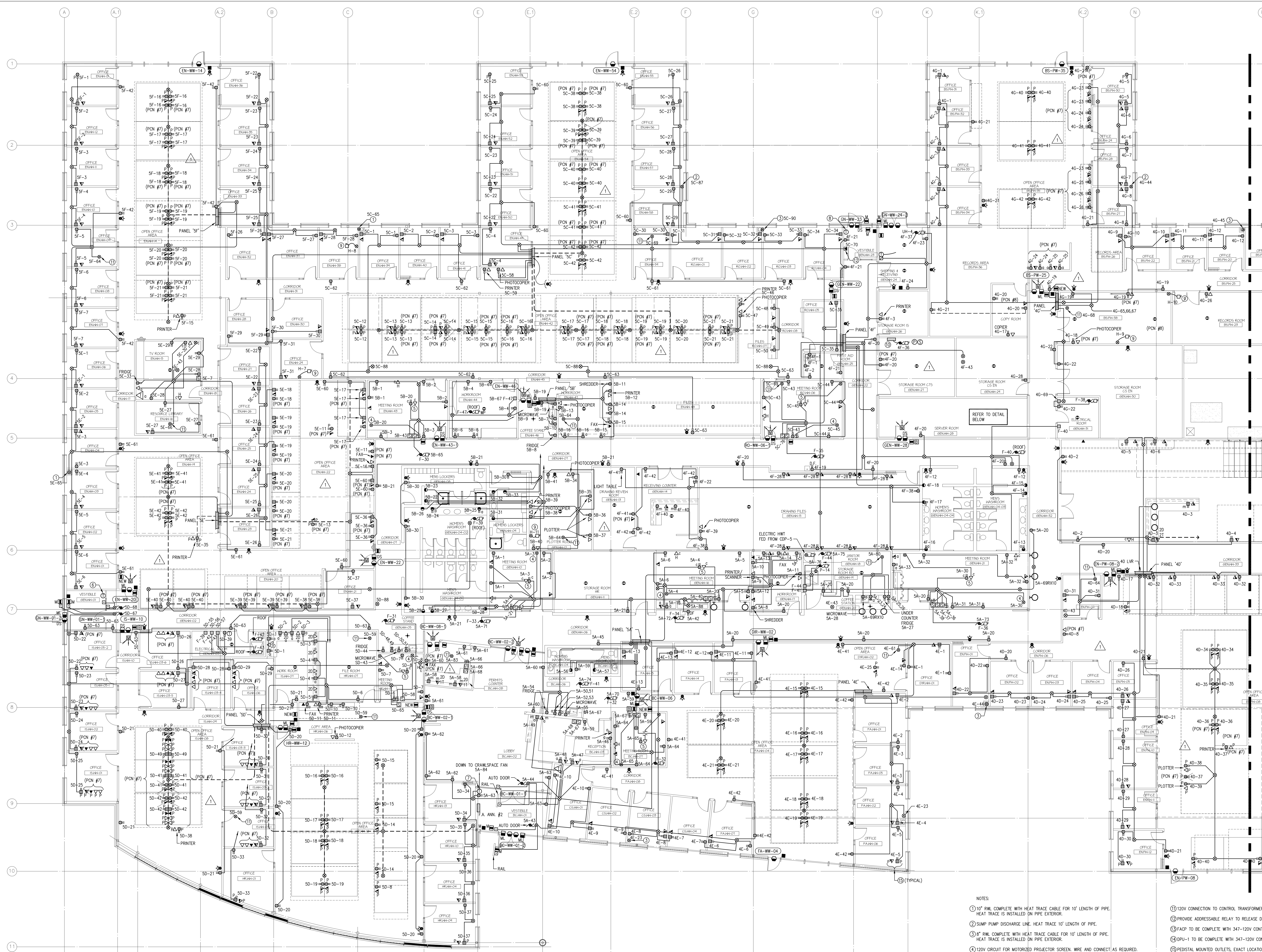
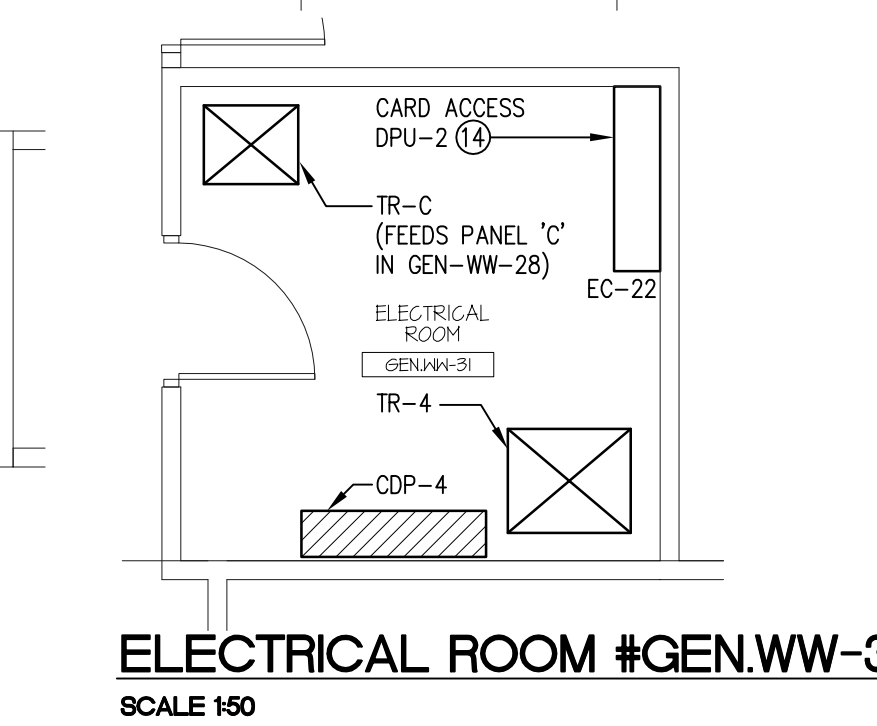
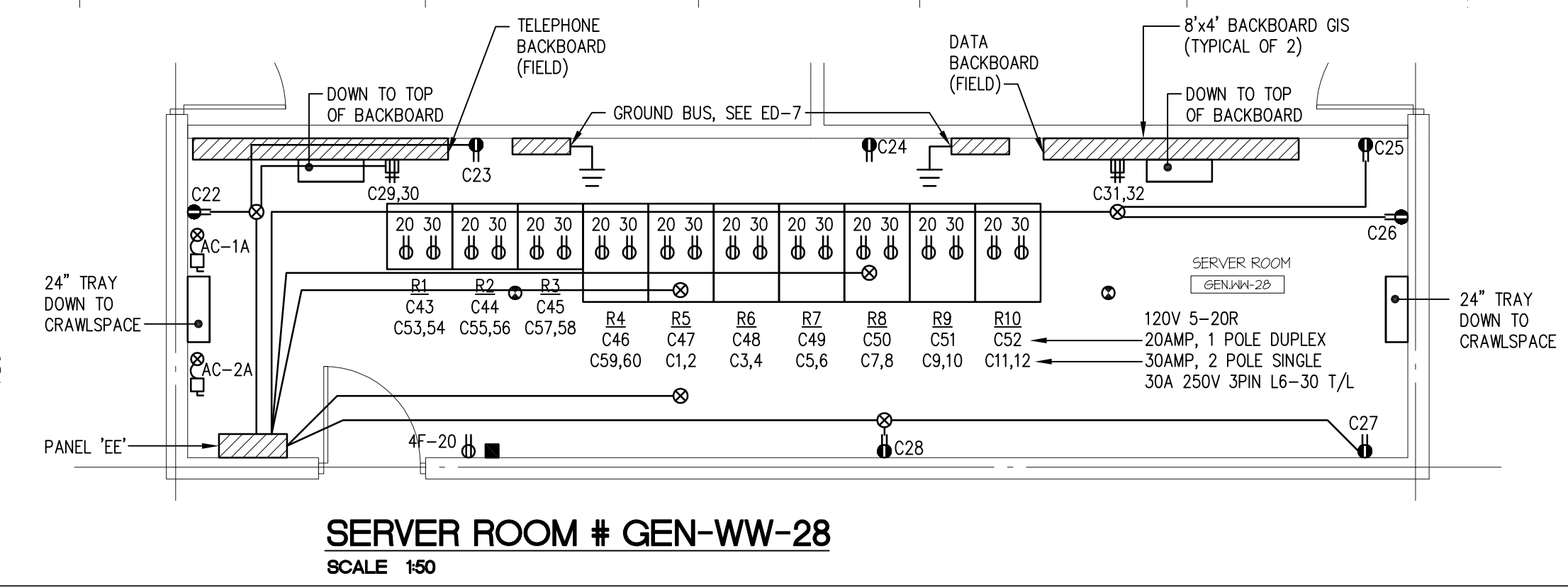


NOTES:
 REFER TO PCN #7 FOR DESCRIPTION OF WORK IN THIS AREA.

FOR CONTINUATION REFER TO DRAWING E2.7



PART MAIN FLOOR PLAN - PART A - POWER AND SYSTEMS
 SCALE 1/100



- NOTES:
- 12" RW COMPLETE WITH HEAT TRACE CABLE FOR 10' LENGTH OF PIPE. HEAT TRACE IS INSTALLED ON PIPE EXTERIOR.
 - SUMP PUMP DISCHARGE LINE. HEAT TRACE 10' LENGTH OF PIPE.
 - 8" RW COMPLETE WITH HEAT TRACE CABLE FOR 10' LENGTH OF PIPE. HEAT TRACE IS INSTALLED ON PIPE EXTERIOR.
 - 120V CIRCUIT FOR MOTORIZED PROJECTOR SCREEN. WIRE AND CONNECT AS REQUIRED.
 - 120V CIRCUIT FOR CEILING MOUNTED PROJECTOR. CEILING MOUNTED OUTLET BOX C/W FACELATE. W/ DMT DOWN TO WALL MOUNTED OUTLET BOX. PROVIDE FACELATE/C/W W/ BUSHED HOLE AND PULLSTRINGS.
 - THERMOSTAT DOWN TO FC-7 IN CRAWLSPACE.
 - THERMOSTAT DOWN TO FC-8 IN CRAWLSPACE.
 - THERMOSTAT DOWN TO FC-9 IN CRAWLSPACE.
 - HUMIDIFIER MOUNTED IN CEILING SPACE.
 - PRE-ACTION SPRINKLER SYSTEM PRESSURE SWITCH, SOLENOID AND COMPRESSOR. PROGRAM TO ACTIVATE SOUND IF BOTH SMOKE DETECTORS IN ROOM GEN-WW-28 OR GEN-WW-24 ACTIVATE OR IF THE MANUAL STATION IN GEN-WW-28 OR GEN-WW-24 IS PULLED.
 - 120V CONNECTION TO CONTROL TRANSFORMER FOR MECHANICAL CONTROLS.
 - PROVIDE ADDRESSABLE RELAY TO RELEASE DOOR HOLDER ON FIRE ALARM SIGNAL.
 - FACP TO BE COMPLETE WITH 347-120V CONTROL TRANSFORMER OF ADEQUATE CAPACITY.
 - UPU-1 TO BE COMPLETE WITH 347-120V CONTROL TRANSFORMER OF ADEQUATE CAPACITY.
 - PRECAST MOUNTED OUTLETS. EXACT LOCATION TO BE DETERMINED ON SITE. MOUNT AS CLOSE AS POSSIBLE TO EXTERIOR WALLS (TYPICAL).
 - 24" WIDE CABLE TRAY MOUNTED ABOVE LAN RACKS (AT APPROXIMATELY 4' AFF.).
 - REFER TO DETAIL SHEET ED-4. CONFIRM RACK LAYOUT WITH OWNER PRIOR TO FIT-UP (10 RACKS).

RECORD DRAWING

CONTRACTOR: **Alco Electrical Limited**
 930 BRADFORD STREET
 WINNIPEG, MANITOBA
 (204) 697-1000

DATE COMPLETED: MM-DD-YY
 SIGNED BY: _____

NOTICE: THIS RECORD DRAWING HAS BEEN PREPARED BASED UPON INFORMATION FURNISHED BY OTHERS. WHILE THIS INFORMATION IS BELIEVED TO BE RELIABLE, THE CONSULTANT CANNOT ASSURE ITS ACCURACY, AND THIS IS NOT RESPONSIBLE FOR ANY ERRORS OR OMISSIONS WHICH MAY HAVE BEEN INCORPORATED INTO IT AS A RESULT.

SMS ENGINEERING

SMS Engineering Ltd. Consulting Engineers
 770 Bannockburn Drive, Suite 100
 Winnipeg, Manitoba R2H 1P9
 Telephone: 204.775.9291 Fax: 204.772.2100
 smseng.com

02-019-01

ORIGINAL CONTRACT DRAWING
 BLENDED AND SEALED BY
 JAM. LOURSE, P. ENG.
 MAY 13, 2004

APEGM
 Certificate of Authorization
 SMS Engineering Ltd.
 No. 966 Expiry April 30, 2005

Drawings and specifications, as instruments of service are the property of the architect. The copyright in the same being reserved by the architect. No reproduction may be made without the permission of the architect and when made, must bear his name. All rights are reserved to the architect.
 The contractor shall verify dimensions and data noted herein with conditions on the site and is held responsible for correcting any discrepancy to the architect for approval.
 This drawing shall not be used for building purposes until countersigned by:

THE CITY OF WINNIPEG

OFFICE ADDITION AND RENOVATIONS
 1155 PACIFIC AVENUE
 WINNIPEG, MANITOBA

FRIESEN TOKAR ARCHITECTS

1155 PACIFIC AVENUE
 WINNIPEG, MANITOBA
 (204) 697-1000

MAIN FLOOR PLAN PART A
 POWER AND SYSTEMS

E2.6.1