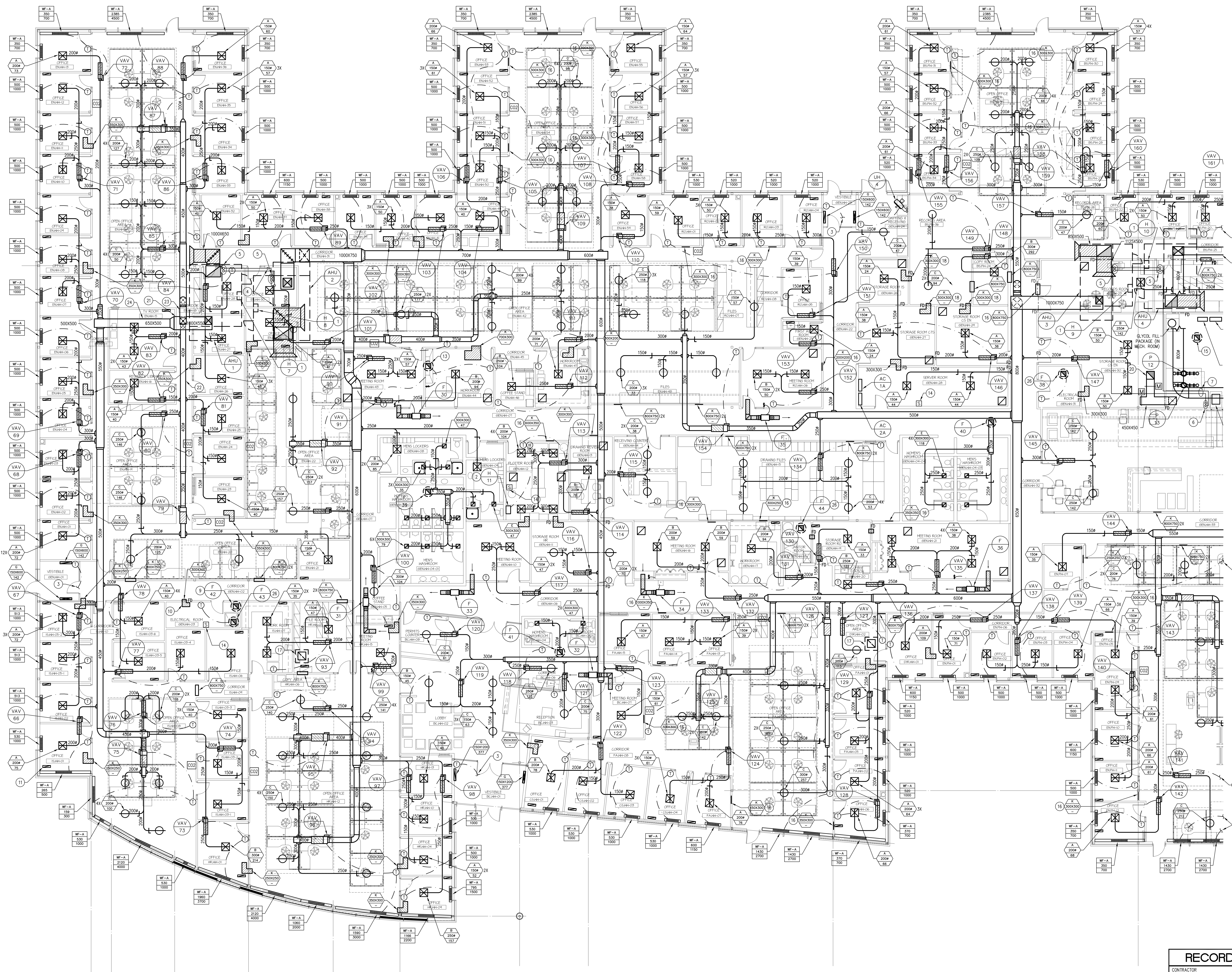


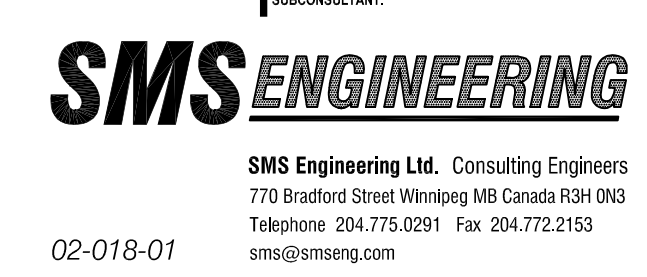
- GENERAL NOTES:**
- A. RETURN GRILLES IN ACOUSTIC TILE CEILINGS ARE TO BE 600X150 OR 600X500 AS SHOWN ON PLANS.
  - B. ALL CONTROL VALVES FOR WALL-FIN TO BE LOCATED IN THE CRAWLSPACE.
  - C. VESTIBULE FAN COIL UNITS TO HAVE FAN CYCLE TO MAINTAIN SET POINT.
  - D. AHU-2, AHU-3 AND AHU-4 TO HAVE 2-WAY CONTROL VALVES ON HEATING COILS. AHU-1 TO HAVE A 3-WAY VALVE.
  - E. DIV 15/20 TO PROVIDE CONTROL TRANSFORMERS AND WIRING TO DEVICES, DIV 16 TO PROVIDE 120V POWER TO TRANSFORMERS. ALLOW 25 ON MAIN FLOOR AND 30 IN CRAWLSPACE. FINAL NUMBERS TO BE CONFIRMED AND COORDINATED WITH DIV 16.
  - F. DDC SENSORS ARE TO BE MOUNTED IN EACH OF THE 5 AHU SERVICE CORRIDORS TO MONITOR SPACE CONDITIONS.
  - G. ALL EXPOSED ROUND DUCTWORK TO BE SPIRAL DUCTWORK.
  - H. TRANSFER ELBOWS WITHOUT ATTACHED GRILLE TO BE 300X300 UNLESS NOTED OTHERWISE. TRANSFER ELBOWS WITH GRILLE ARE TO BE THE SIZE OF THE GRILLE UNLESS NOTED OTHERWISE.
  - I. ALL EXPOSED TRANSITIONS ON ROUND DUCTWORK TO BE ECCENTRIC SUCH THAT DUCT REMAINS AS HIGH AS POSSIBLE.
  - J. SPACE CO2 SENSORS TO DETERMINE REQUIRED OUTDOOR AIR RATE FOR ASSOCIATE AIR HANDLER.

- DRAWING NOTES: (M)**
1. HUMIDIFIER MOUNTED IN AIR HANDLING UNIT SERVICE CORRIDOR. DISPERSON LINE PIPED TO HUMIDIFICATION SECTION IN AIR HANDLING UNIT.
  2. WALL MOUNTED HUMIDIFIER C/W BLOWER PACK.
  3. THERMOSTAT DOWN TO FAN COIL UNIT IN CRAWLSPACE.
  4. GLYCOL HEATING SUPPLY AND RETURN UP FROM CRAWLSPACE.
  5. GLYCOL HEATING SUPPLY AND RETURN PIPING UP TO ROOFTOP AIR HANDLING UNIT.
  6. GLYCOL HEATING SUPPLY AND RETURN PIPING DOWN TO CRAWLSPACE FROM HEAT EXCHANGER.
  7. GLYCOL HEATING SUPPLY AND RETURN PIPING UP TO CEILING SPACE TO CONNECT TO ROOFTOP AIR HANDLING UNITS.
  8. TO THERMOSTAT. SEE M2.4 FOR CONTINUATION.
  9. 450X450 DUCT UP FROM CRAWLSPACE TO ROOFTOP EXHAUST FAN. C/W ROOF SCREEN AND FIRE DAMPER.
  10. 300X300 TRANSFER DUCT C/W FIRE DAMPER.
  11. SMALL RETURN GRILLE TYPE D, 600X150 TYPICAL.
  12. LARGE RETURN GRILLE TYPE D, 600X500 TYPICAL.
  13. NEW ROOFTOP EXHAUST FAN F-47, CONNECT TO OWNER'S EXHAUST HOOD.
  14. DDC SENSOR TO MONITOR SPACE CONDITION.
  15. 125X125 BOILER ROOM RELIEF VENT.
  16. PROVIDE A SOUND BATTLE PER SPECIFICATION DETAIL. PROVIDE FOR SIDEWALL APPLICATION.
  17. 600X600 RELIEF OPENING UP TO HOOD.
  18. TRANSFER GRILLE C/W FIRE DAMPER.
  19. 900X300 TRANSFER OPENING.
  20. 450X450 DUCT UP TO ROOFTOP INTAKE HOOD.
  21. 1000X550 DUCT IN JOIST SPACE.
  22. 400X DUCT THROUGH WEB.
  23. 500X500.
  24. 600X500 TIGHT TO U/S STRUCTURE.
  25. RUN IN JOIST SPACE DROP UNDER BEAMS.
  26. COMPLETE WITH 350X350 DUCT TO TYPE E, EGG GRATE GRILLE.

FOR CONTINUATION, REFER TO DRAWING M2.4



MAIN FLOOR PLAN - PART A  
SCALE: 1/10



SMS Engineering Ltd. Consulting Engineers  
7700 Grand Avenue, Suite 200  
Winnipeg, Manitoba R3T 0R1  
Telephone: 204.775.5211 Fax: 204.772.5210  
www.smseng.com

ORIGINAL CONTRACT DRAWING  
ISSUED AND SEALED BY  
V.S. WALKER, P. ENG.  
MAY 14, 2004



APPEAL OF AWARD  
SMS Engineering Ltd.  
No. 166 Expiry: April 30, 2006

Drawings and specifications, as instruments of service are the property of the architect. The copyright in the same being reserved to the architect and when made, shall bear the name of the architect. The contractor shall verify dimensions and data noted herein with conditions on the site and will be responsible for rectifying any discrepancy to the architect for completion. This drawing shall not be used for building preparation without the architect's consent.

THE CITY OF WINNIPEG

OFFICE ADDITION AND RENOVATION  
1155 PACIFIC AVENUE  
WINNIPEG, MANITOBA

**RECORD DRAWING**

CONTRACTOR  
MANTIC MECHANICAL CONTRACTORS AND AIR CONDITIONING LTD.  
1344 SPRING STREET  
WINNIPEG, MANITOBA  
R2E 2Y7  
PH: 783-2234 FAX: 783-2235

DATE COMPLETED: MARCH 14, 2007 SIGNED BY: BID MELNYK

NOTE: THIS RECORD DRAWING HAS BEEN PREPARED, BASED UPON INFORMATION FURNISHED BY OTHERS. WHILE THIS INFORMATION IS BELIEVED TO BE RELIABLE, THE CONTRACTOR CANNOT ASSURE ITS ACCURACY, AND THIS IS NOT RESPONSIBLE FOR ANY ERRORS OR OMISSIONS WHICH MAY HAVE BEEN INCORPORATED INTO IT AS A RESULT.

FRIESEN TOKAR ARCHITECTS

CONTRACTOR

MAIN FLOOR PLAN - PART A  
H.V.A.C.

**M2.3AB**