

**March 12, 2008**

**Noise Control Scope of Work:**

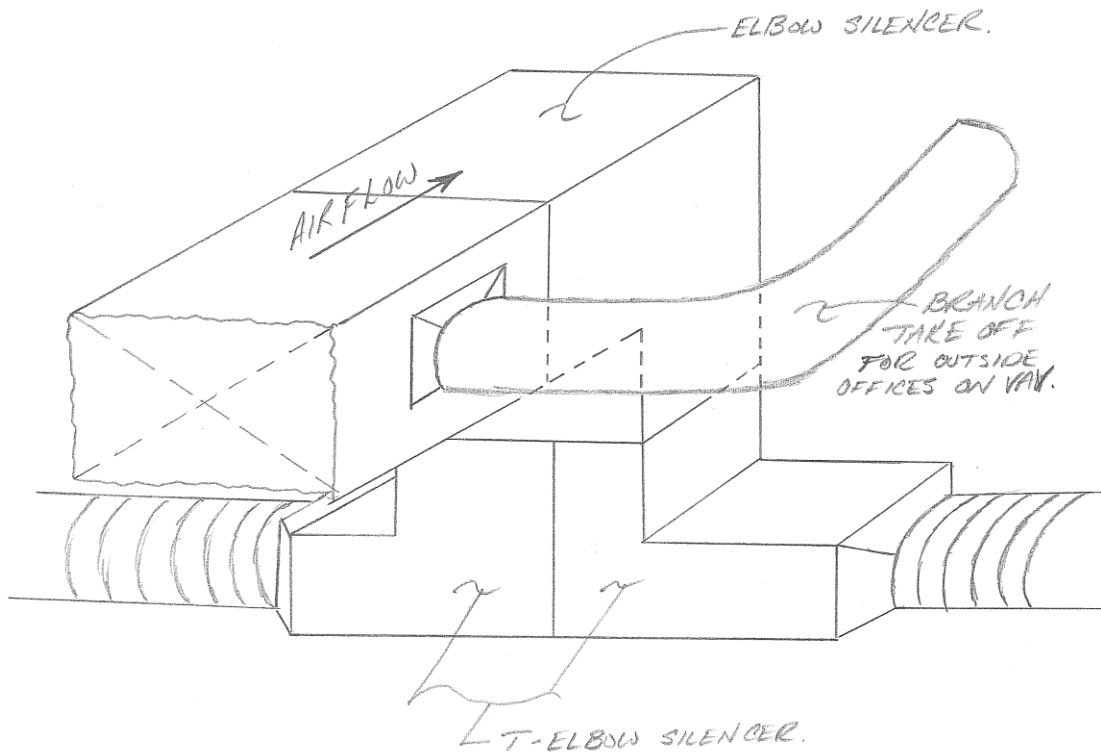
1. Refer to photographs of the existing installation for the supply duct from AHU-1, below. Revise the supply duct near gridline A.1 such that an elbow silencer is installed turning down to a "T" elbow silencer splitting the flow north and south, the branch line to the VAV serving rooms EN.WW-07,08 and 09 shall take off the main duct prior to the new elbow silencer. Refer to sketch.

**First Location: Hallway to Cubicles and Office spaces.**

Supply duct deadheading with elbow take off on bottom of duct, take off branch on the right side with a VAV takeoff.

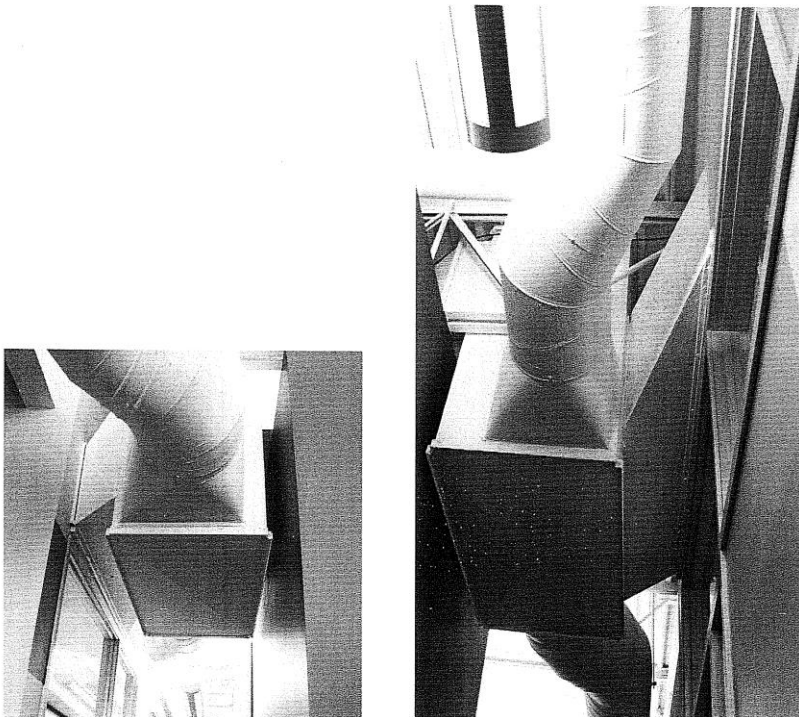


FIRST LOCATION:

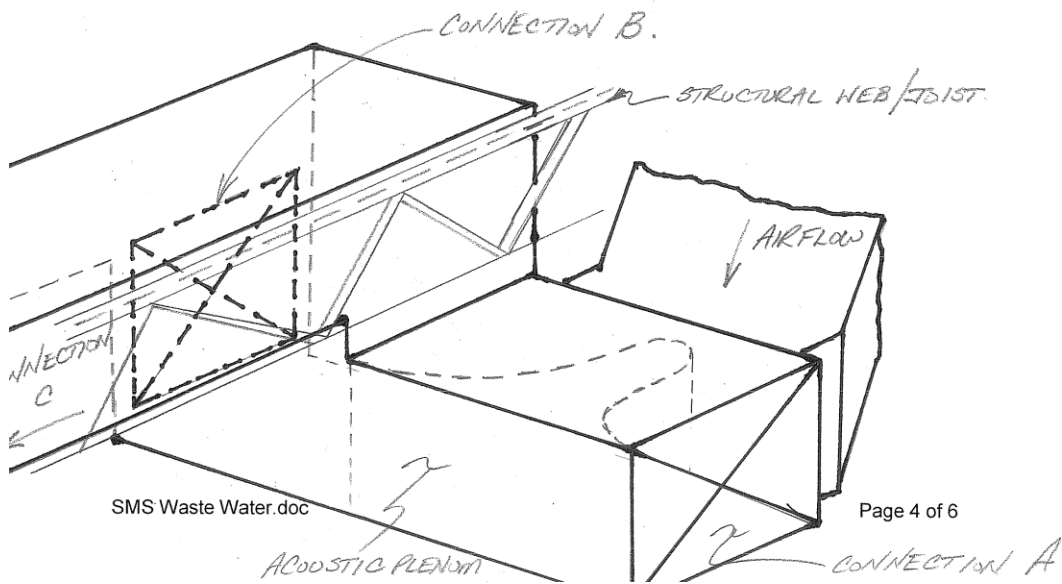
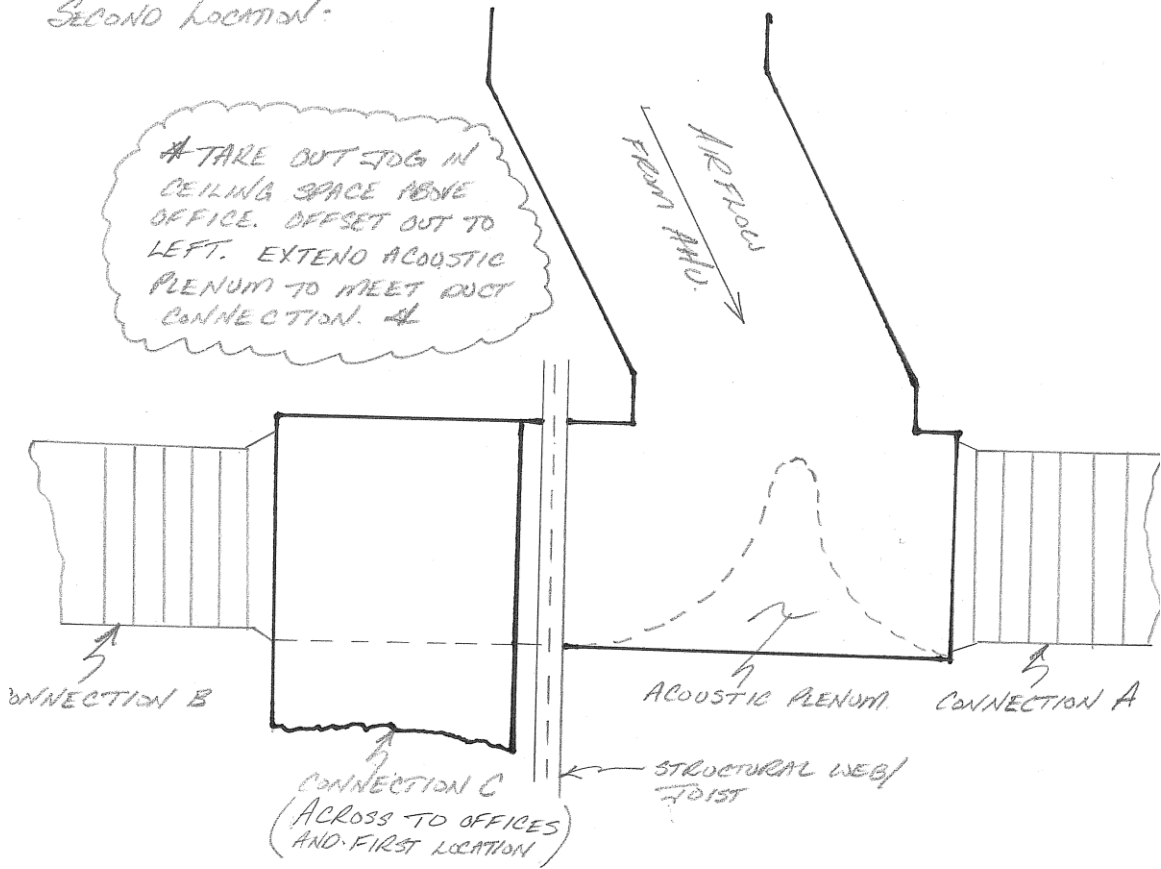


2. The duct work transitions from AHU-1 near gridline A.2 shown in the photograph below are to be reworked using acoustic plenums. Refer to the attached sketch below.

Second Location: Supply duct off Roof top unit with a jog in the ductwork.

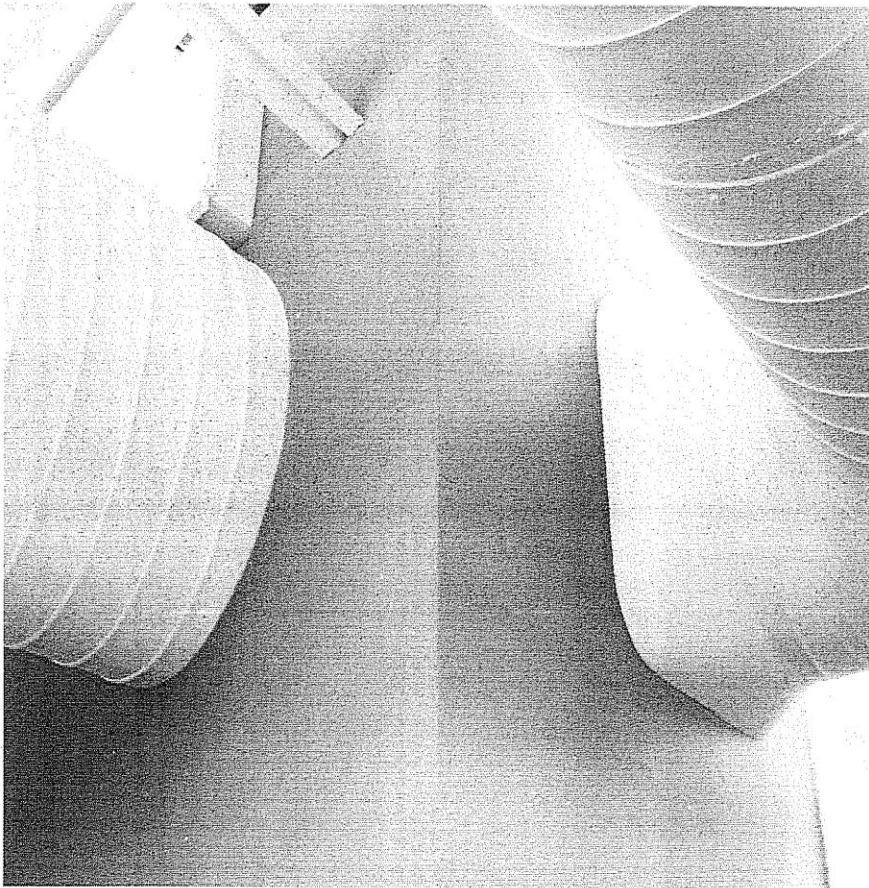


SECOND LOCATION:



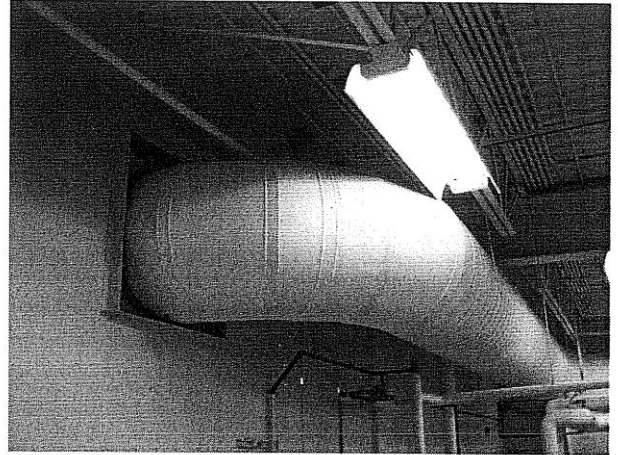
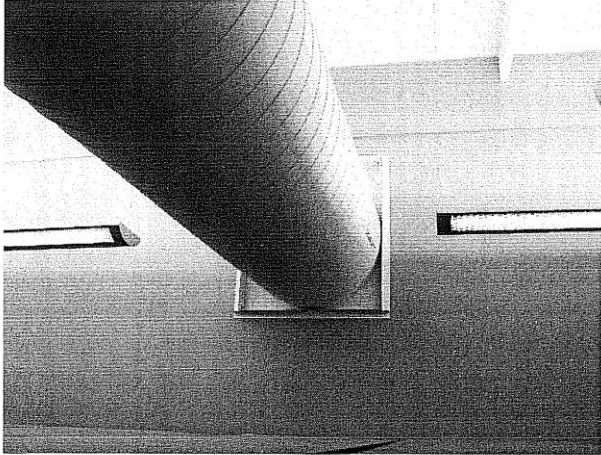
3. The discharge plenum for AHU-2 located between gridlines B and C is to be revised. Provide minimum 18 gauge acoustically lined ductwork for the new plenum, revise provide elbow silencers at each of the two elbows from the plenum. Ductwork connected to the plenum via flexible connections.

**Third Location: AHU above office space with discharge plenum built in bulkhead.**



4. Provide an elbow silencer within the boiler room on the duct between gridlines P and Q, to reduce the transmission of ductborne noise between the boiler room and the library. Refer to photographs below.

**Forth Location: Library and Boiler room**



5. Revise the duct supply plenum from AHU-4, increase the thickness of the duct to minimum 18 gauge. The revised plenum is to be acoustically lined. The plenum is to be enlarged to increase the volume. Relocate the existing light fixture to suit the installation of the revised supply plenum. Provide silencers at each duct take-off. Refer to photographs below.

**Fifth Location: Supply duct in Hallway.**

