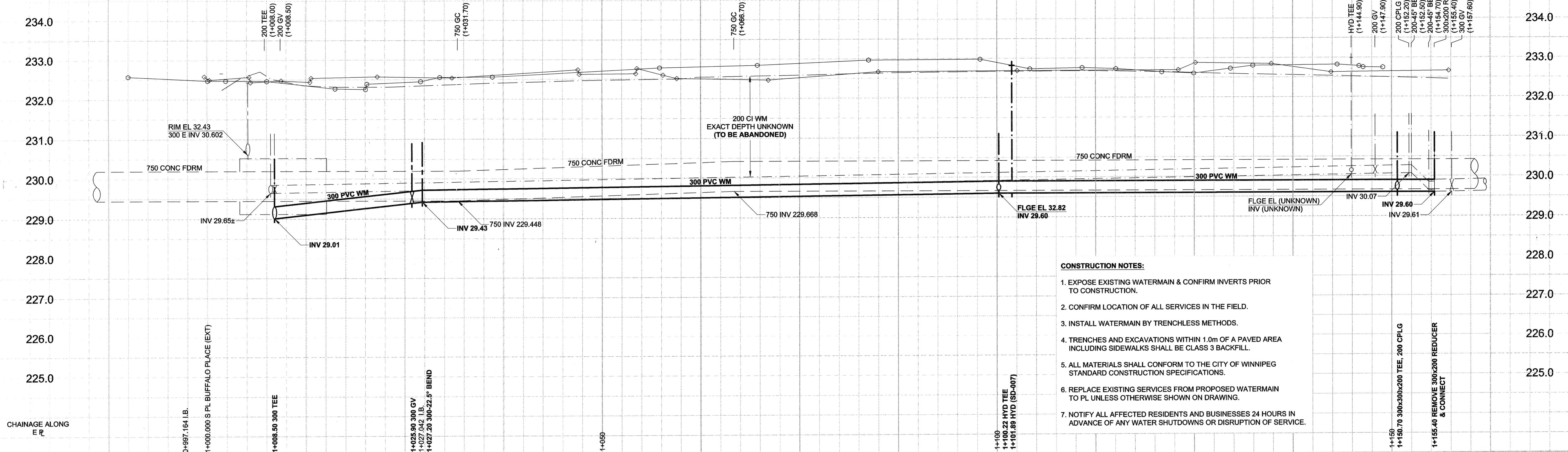


D SIZE 22" x 34" (594mm x 864mm)

PL01: 4/23/2008 10:04:32 AM

UMA REVIEW DRFT CHK Page
UMA FILE NAME: D265-229-00 01-C-1001 RX.dwg Saved By: aleippi

EXISTING FEATURES

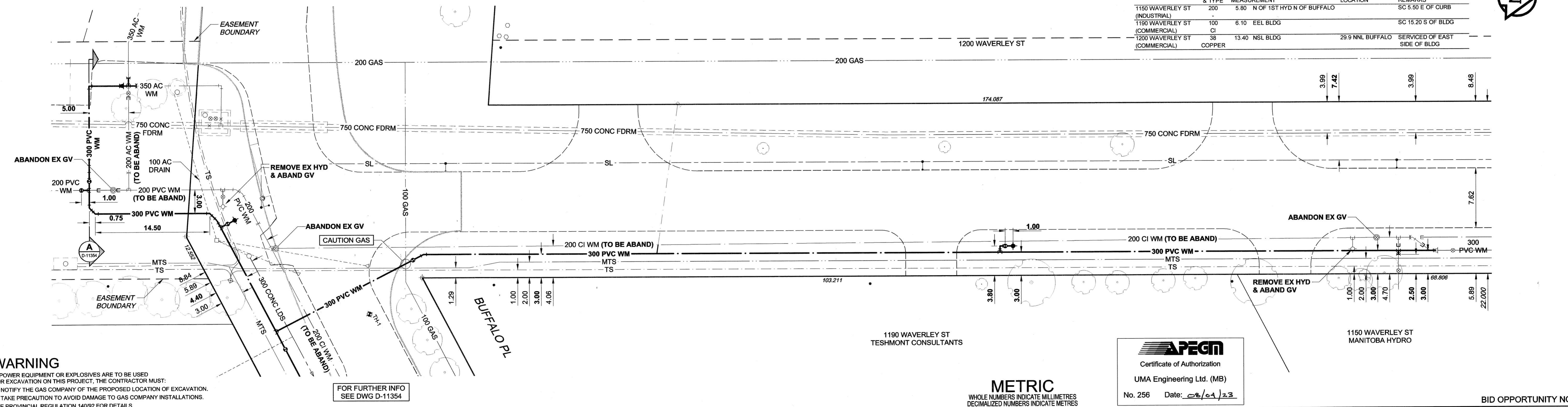
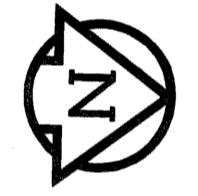


- CONSTRUCTION NOTES:**
1. EXPOSE EXISTING WATERMAIN & CONFIRM INVERTS PRIOR TO CONSTRUCTION.
 2. CONFIRM LOCATION OF ALL SERVICES IN THE FIELD.
 3. INSTALL WATERMAIN BY TRENCHLESS METHODS.
 4. TRENCHES AND EXCAVATIONS WITHIN 1.0m OF A PAVED AREA INCLUDING SIDEWALKS SHALL BE CLASS 3 BACKFILL.
 5. ALL MATERIALS SHALL CONFORM TO THE CITY OF WINNIPEG STANDARD CONSTRUCTION SPECIFICATIONS.
 6. REPLACE EXISTING SERVICES FROM PROPOSED WATERMAIN TO PL UNLESS OTHERWISE SHOWN ON DRAWING.
 7. NOTIFY ALL AFFECTED RESIDENTS AND BUSINESSES 24 HOURS IN ADVANCE OF ANY WATER SHUTDOWNS OR DISRUPTION OF SERVICE.

SERVICE ROAD

WATER SERVICE INFORMATION

ADDRESS	SIZE (mm)	SHORT & LONG MEASUREMENT	CORPORATION LOCATION	REMARKS
1150 WAVERLEY ST (INDUSTRIAL)	200	5.80' N OF 1ST HYD N OF BUFFALO		SC 5.50 E OF CURB
1150 WAVERLEY ST (COMMERCIAL)	100	6.10' EEL BLDG		SC 15.20 S OF BLDG
1200 WAVERLEY ST (COMMERCIAL)	38	13.40' NSL BLDG	29.9' NNL BUFFALO	SERVICED OF EAST SIDE OF BLDG



WARNING
 IF POWER EQUIPMENT OR EXPLOSIVES ARE TO BE USED FOR EXCAVATION ON THIS PROJECT, THE CONTRACTOR MUST:
 1) NOTIFY THE GAS COMPANY OF THE PROPOSED LOCATION OF EXCAVATION.
 2) TAKE PRECAUTION TO AVOID DAMAGE TO GAS COMPANY INSTALLATIONS.
 SEE PROVINCIAL REGULATION 140/92 FOR DETAILS

FOR FURTHER INFO SEE DWG D-11354

METRIC
WHOLE NUMBERS INDICATE MILLIMETRES
DECIMALIZED NUMBERS INDICATE METRES

APECM
 Certificate of Authorization
 UMA Engineering Ltd. (MB)
 No. 256 Date: 08/01/23

BID OPPORTUNITY NO. 331-2008

150 WM	WATERMAIN	150 WM	CURB STOP	150 WM	WATERMAIN	150 WM
	HYDRANT		REDUCER		HYDRANT	
	VALVE		COUPLING		VALVE	
	LAND DRAINAGE SEWER		ANODE		LAND DRAINAGE SEWER	
	WASTE WATER SEWER		HYDRO		WASTE WATER SEWER	
	MANHOLE		MTS		PAVEMENT CROWN	
	CATCH BASIN		GAS		NW PROPERTY LINE	
	CURB INLET		TESTHOLE		S/E GUTTER	
	CULVERT		LAMP STANDARD		NW GUTTER	
	PIPE ABANDONMENTS		TREE		S/E GUTTER	
	SURVEY BAR					
EXISTING	LEGEND - PLAN	NEW	EXISTING	LEGEND - PLAN	NEW	EXISTING

LOCATION APPROVED
 UNDERGROUND STRUCTURES

SUPR. U/G STRUCTURES DATE COMMITTEE

NOTE:
 LOCATION OF UNDERGROUND STRUCTURES AS SHOWN ARE BASED ON THE BEST INFORMATION AVAILABLE. BUT NO GUARANTEE IS GIVEN THAT ALL EXISTING UTILITIES ARE SHOWN OR THAT THE GIVEN LOCATIONS ARE EXACT. CONFIRMATION OF EXISTENCE AND EXACT LOCATION OF ALL SERVICES MUST BE OBTAINED FROM THE INDIVIDUAL UTILITIES BEFORE PROCEEDING WITH CONSTRUCTION.

NO.	REVISIONS	Y/M/D	BY
0	ISSUED FOR CONSTRUCTION	08/04/23	ADL

DESIGNED BY	MJR	CHECKED BY	A. Delano
DRAWN BY	ADL	APPROVED BY	<i>[Signature]</i>
HOR. SCALE	1:250	RELEASED FOR CONSTRUCTION	<i>[Signature]</i>
VERT. SCALE	1:50	DATE	08/01/23

PROFESSIONAL'S SEAL
 PROVINCE OF MANITOBA
 24 April 2008
 C. C. MACEY
 REGISTERED ENGINEER

THE CITY OF WINNIPEG
 WATER AND WASTE DEPARTMENT

2008 Watermain Renewals
 Contract 6

Service Road East of Waverley Street
 Buffalo Place
 to 420m South of Seel Avenue

SHEET 01 OF 10
 CITY DRAWING NUMBER
D-11353
 REV 0