

NOTE: CHAINAGES SHOWN ARE ALONG E R OF OSBORNE ST.

WATER SERVICE INFORMATION

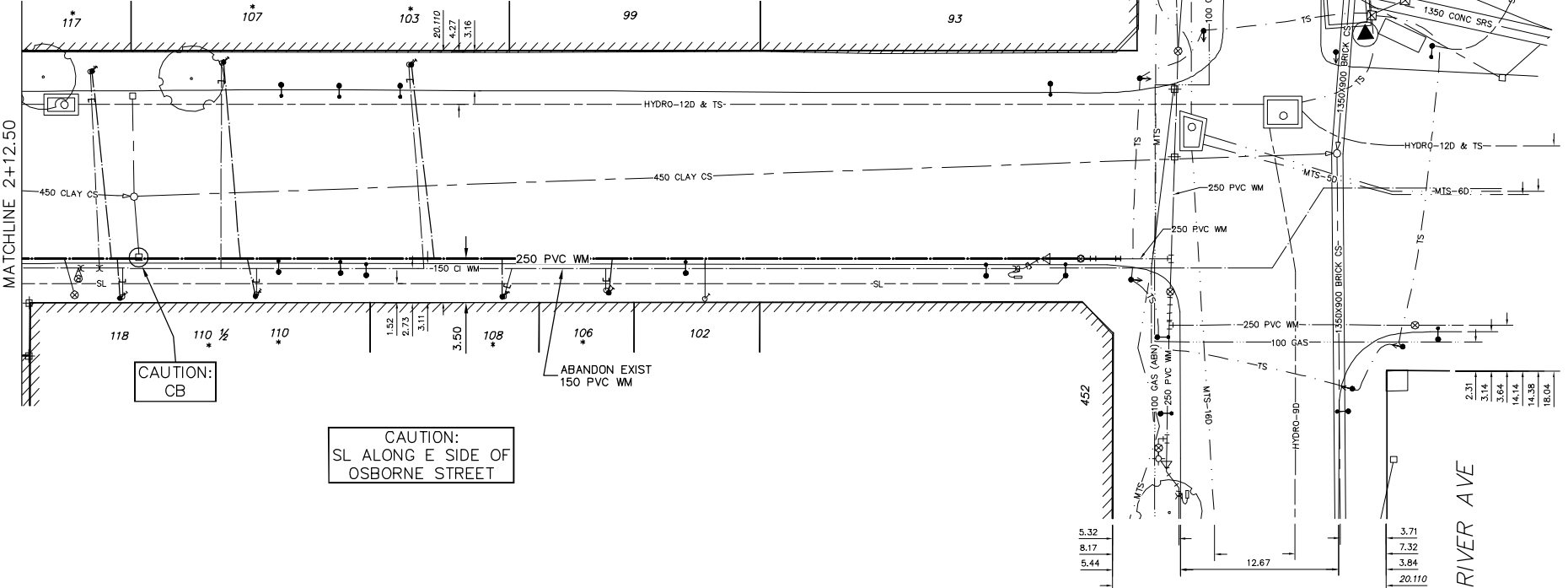
ADDRESS	SIZE(mm) & TYPE (STREET)	SIZE(mm) & TYPE (PROP)	SHORT & LONG MEASUREMENT	CORP. LOCATION	REMARKS
93 OSBORNE ST	19 COPPER	12 LEAD	3.05 EWL BLDG	0.3 W OF S/C	SERVICED OFF RIVER
93 OSBORNE ST	36 COPPER	36 LEAD	10.07 WML OSBORNE	OPP S/C	SERVICED OFF RIVER
98 OSBORNE ST	25 COPPER	25 COPPER	3.36 EWL BLDG	OPP S/C	-
98 OSBORNE ST	25 COPPER	25 COPPER	9.75 WML OSBORNE	OPP S/C	-
98 OSBORNE ST	25 COPPER	25 COPPER	4.58 NSL BLDG	-	-
102 OSBORNE ST	25 COPPER	25 COPPER	0.28 OFF E	OPP S/C	-
103 OSBORNE ST	25 COPPER	25 COPPER	32.69 SSL RIVER	OPP S/C	-
103 OSBORNE ST	25 COPPER	25 COPPER	1.36 OFF E	OPP S/C	RENEW W/ 25 COPPER
103 OSBORNE ST	25 COPPER	25 COPPER	58.34 SSL RIVER	1.22 N OF S/C	-
106 OSBORNE ST	19 LEAD	19 LEAD	0.95 OFF E	OPP S/C	RENEW W/ 25 COPPER
106 OSBORNE ST	19 LEAD	19 LEAD	40.63 SSL RIVER	OPP S/C	RENEW W/ 25 COPPER
107 OSBORNE ST	25 LEAD	25 LEAD	0.96 OFF E	OPP S/C	RENEW W/ 25 COPPER
107 OSBORNE ST	25 LEAD	25 LEAD	73.32 SSL RIVER	OPP S/C	-
108 OSBORNE ST	25 LEAD	25 LEAD	0.49 OFF E	OPP S/C	RENEW W/ 25 COPPER
108 OSBORNE ST	25 LEAD	25 LEAD	49.81 SSL RIVER	0.6 N OF S/C	RENEW W/ 25 COPPER
110 OSBORNE ST	19 LEAD	19 LEAD	0.66 OFF E	OPP S/C	RENEW W/ 25 COPPER
110 OSBORNE ST	19 LEAD	19 LEAD	68.66 SSL RIVER	OPP S/C	RENEW W/ 25 COPPER
110 1/2 OSBORNE ST	19 LEAD	19 LEAD	0.48 OFF E	OPP S/C	RENEW W/ 25 COPPER
110 1/2 OSBORNE ST	19 LEAD	19 LEAD	79.42 SSL RIVER	OPP S/C	RENEW W/ 25 COPPER
117 OSBORNE ST	19 COPPER	19 COPPER	1.64 OFF E	0.6 N OF S/C	RENEW W/ 25 COPPER
118 OSBORNE ST	38 COPPER	38 COPPER	83.88 SSL RIVER	0.6 S OF S/C	-
118 OSBORNE ST	38 COPPER	38 COPPER	0.60 OFF E	0.6 S OF S/C	-
118 OSBORNE ST	38 COPPER	38 COPPER	83.26 SSL RIVER	0.6 S OF S/C	-

* SERVICES TO BE RENEWED TO R UPON CONFIRMATION BY THE CONTRACTOR OF EXISTING 1/2" COPPER OR LEAD SERVICE. OBTAIN APPROVAL FROM CONTRACT ADMINISTRATOR PRIOR TO RENEWAL.

CONSTRUCTION NOTES

1. EXPOSE EXISTING WATERMAIN & CONFIRM INVERTS PRIOR TO CONSTRUCTION.
2. CONFIRM LOCATION OF ALL SERVICES IN THE FIELD.
3. INSTALL WATERMAIN BY TRENCHLESS METHODS.
4. TRENCHES AND EXCAVATIONS WITHIN 1 METRE OF A PAVED AREA INCLUDING SIDEWALKS SHALL BE CLASS 3 BACKFILL.
5. ALL MATERIALS SHALL CONFORM TO THE CITY OF WINNIPEG STANDARD CONSTRUCTION SPECIFICATIONS.
6. MINIMUM COVER TO TOP OF WATERMAIN SHALL BE 2.4 m.
7. REPLACE ALL EXISTING LEAD SERVICES FROM PROPOSED WATERMAIN TO R.
8. NOTIFY ALL AFFECTED RESIDENTS AND BUSINESSES 24 HOURS IN ADVANCE OF ANY WATER SHUTDOWNS OR DISRUPTION OF SERVICE.
9. EXCAVATIONS TO BE LOCATED AWAY FROM EXISTING TREE'S.

SEE DWG D-11341 MATCHLINE 2+12.50



CAUTION: CB

CAUTION: SL ALONG E SIDE OF OSBORNE STREET



METRIC
WHOLE NUMBERS INDICATE MILLIMETRES
DECIMALIZED NUMBERS INDICATE METRES

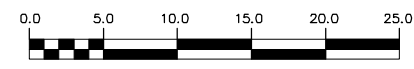
NOTE: ALL VALVES TO BE INSTALLED COUNTERCLOCKWISE TO CLOSE

WARNING

IF POWER EQUIPMENT OR EXPLOSIVES ARE TO BE USED FOR EXCAVATION ON THIS PROJECT THE CONTRACTOR MUST:

- 1) NOTIFY THE GAS COMPANY OF THE PROPOSED LOCATION OF EXCAVATION.
- 2) TAKE PRECAUTION TO AVOID DAMAGE TO GAS COMPANY INSTALLATIONS.

SEE PROVINCIAL REGULATION 210/72 FOR DETAILS



EXISTING	LEGEND-PLAN	PROPOSED	EXISTING	LEGEND-PLAN	PROPOSED	EXISTING	LEGEND-PROFILE	PROPOSED
200 WM	WATERMAIN	200 WM	SL, HYDRO	MTS	50 GAS	300 LDS	LAND DRAINAGE SEWER	300 LDS
525 LDS	LAND DRAINAGE SEWER	525 LDS	50 GAS	300 LDS	LAND DRAINAGE SEWER	300 LDS	LAND DRAINAGE SEWER	300 LDS
375 WWS	WASTEWATER SEWER	375 WWS	250 WWS	WASTEWATER SEWER	250 WWS	250 WWS	WASTEWATER SEWER	250 WWS
○	MANHOLE	●	* * * *	FENCE	○	○	PROFILE	
□	CATCH BASIN	■	* H * T	POLE - HYDRO, MTS	△	△	GROUND ABOVE PIPE	
▽	CURB INLET	▽	○	CURB STOP	△	△	☉ DITCH (NORTH & WEST)	
◁	REDUCER	▷	←	GUY ANCHOR	△	△	☉ DITCH (SOUTH & EAST)	
X	COUPLER	X	→	LIGHT STANDARD	△	△	☉ GUTTER (NORTH & WEST)	
⊕	ANODE	⊕	○	TREE	△	△	☉ GUTTER (SOUTH & EAST)	

LOCATION APPROVED UNDERGROUND STRUCTURES

SUPV. U/G STRUCTURES COMMITTEE DATE

NOTE: LOCATION OF UNDERGROUND STRUCTURES AS SHOWN ARE BASED ON THE BEST INFORMATION AVAILABLE BUT NO GUARANTEE IS GIVEN THAT ALL EXISTING UTILITIES ARE SHOWN OR THAT THE GIVEN LOCATIONS ARE EXACT. CONFIRMATION OF EXISTENCE AND EXACT LOCATION OF ALL SERVICES MUST BE OBTAINED FROM THE INDIVIDUAL UTILITIES BEFORE PROCEEDING WITH CONSTRUCTION.

NO.	REVISIONS	DATE	BY

CITY OF WINNIPEG WATER AND WASTE ENGINEERING DIVISION

DESIGNED BY SC CHECKED BY SC

DRAWN BY C/JH APPROVED BY KZ

HOR. SCALE 1:250 VERTICAL 1:50

RELEASED FOR CONSTRUCTION SIGNED BY K. ZUREK

DATE 2008 05 13 DATE 08/05/13

ENGINEER'S SEAL

ORIGINAL SIGNED BY S.R.J. COURNOYER 08/05/13

BID OPPORTUNITY 344-2008 FILENAME: D-11342.dwg PLOT DATE: 2008 05 13

THE CITY OF WINNIPEG WATER AND WASTE DEPARTMENT

2008 WATERMAIN RENEWALS CONTRACT 21

OSBORNE STREET
88 S OF RIVER AVENUE TO RIVER AVENUE

SHEET 2 OF 5
CITY DRAWING NUMBER D-11342