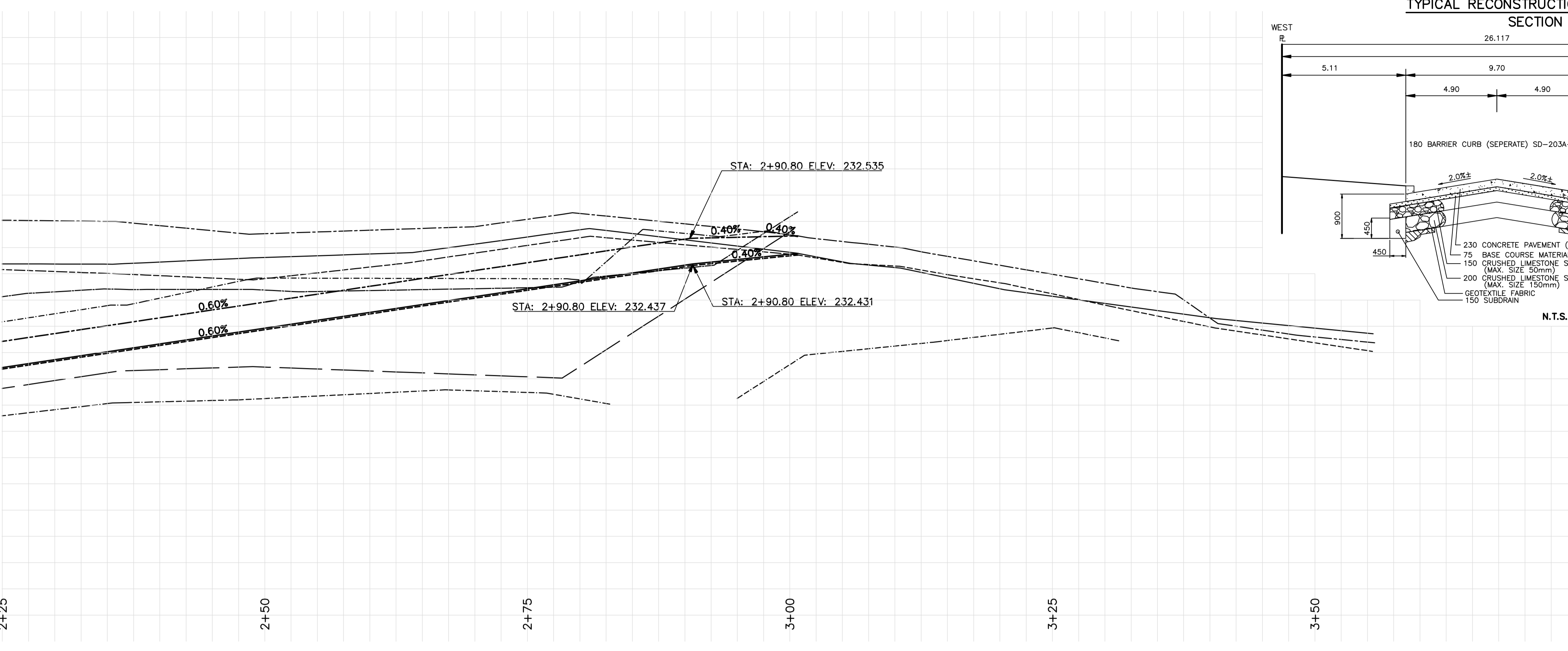
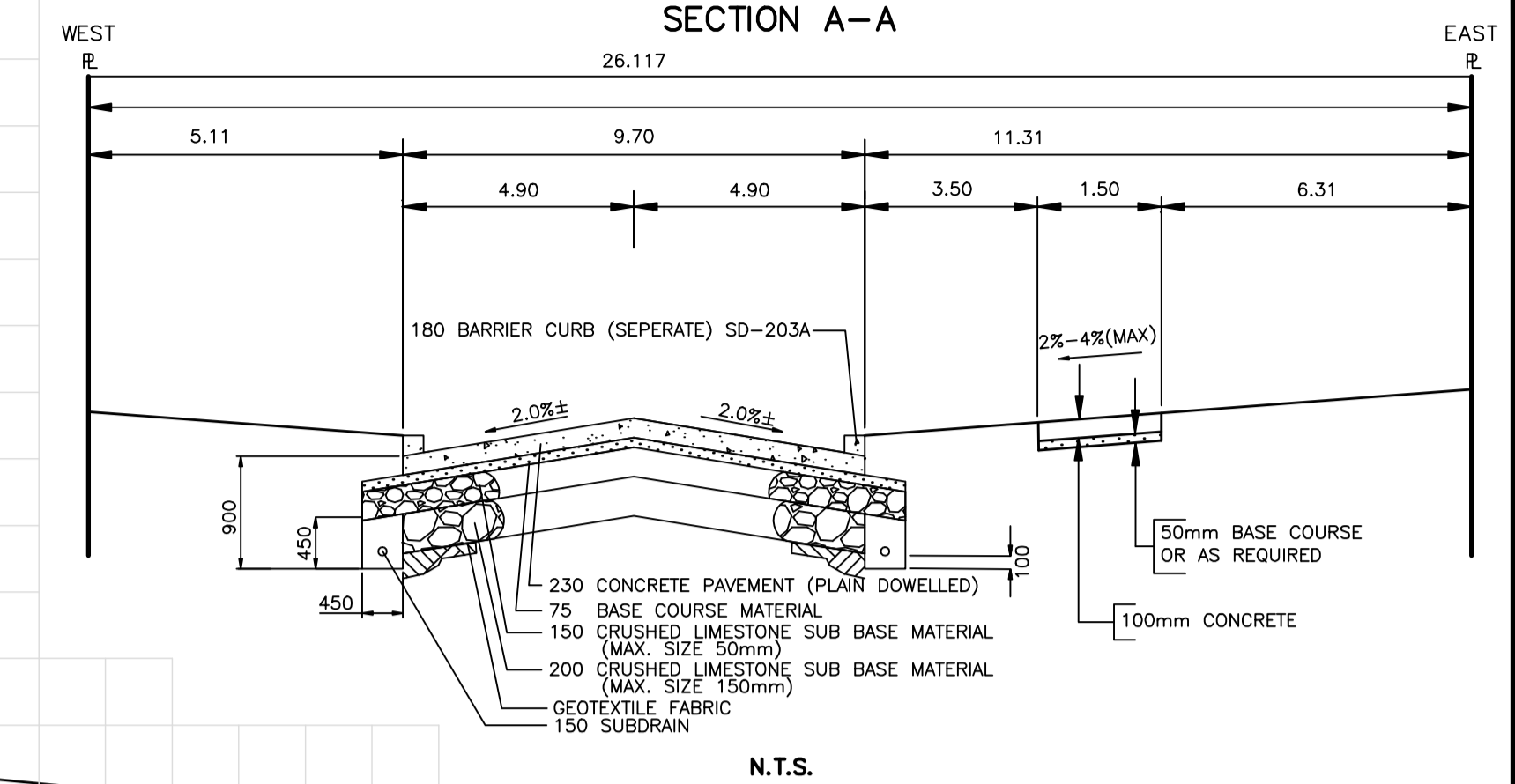


233.400
233.300
233.200
233.100
233.000
232.900
232.800
232.700
232.600
232.500
232.400
232.300
232.200
232.100
232.000
231.900
231.800
231.700
231.600
231.500
231.400
231.300
231.200
231.100
231.000

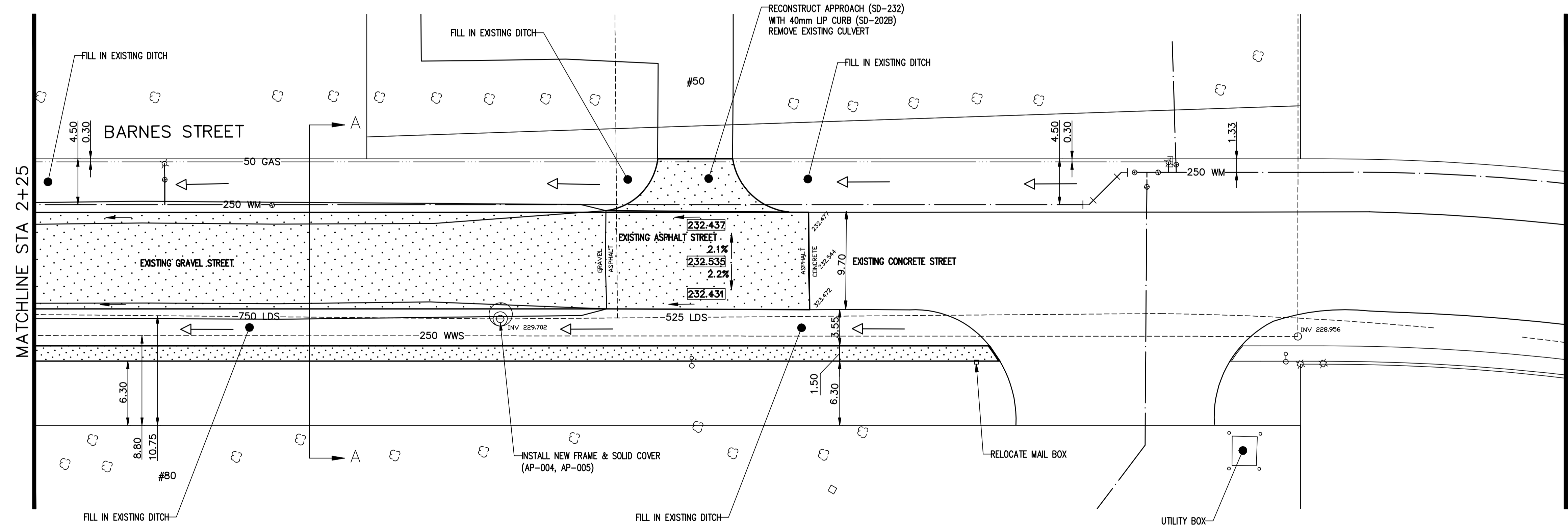


TYPICAL RECONSTRUCTION CROSS-SECTION



N.T.S.

232.100
232.000
231.900
231.800
231.700
231.600
231.500
231.400
231.300
231.200
231.100
231.000



- CONSTRUCTION NOTES**
- 1) CURB REPLACEMENT AS DIRECTED BY THE CONTRACT ADMINISTRATOR
 - 2) ALL STREET RADIUS CURB UNDER 15M RADIUS SHALL BE REPLACED AS MODIFIED OR AS DIRECTED BY THE CONTRACT ADMINISTRATOR
 - 3) PAVEMENT REPAIRS SHOWN ARE ONLY A REPRESENTATIVE SAMPLE OF THE TENDERED QUANTITIES
 - 4) ASPHALT TIE-INS ON APPROACHES TO BE DETERMINED IN THE FIELD BY THE CONTRACT ADMINISTRATOR.
 - 5) ALL BULLNOSES TO HAVE SLOPED FACE.

WARNING

IF POWER EQUIPMENT OR EXPLOSIVES ARE TO BE USED FOR EXCAVATION ON THIS PROJECT THE CONTRACTOR MUST:

- 1) OBTAIN CLEARANCE FROM THE GAS UTILITY PRIOR TO EXCAVATION.
- 2) TAKE PRECAUTION TO AVOID DAMAGE TO GAS UTILITY INSTALLATIONS.

SEE PROVINCIAL REGULATION 210/72 FOR DETAILS

METRIC
WHOLE NUMBERS INDICATE MILLIMETRES
DECIMALIZED NUMBERS INDICATE METRES

BID OPPORTUNITY NO. 373-2008

HYDRANT VALVE	LDS/WWS WATERMAIN	EAST GUTTER CENTER LINE
CURB STOP	GAS	WEST GUTTER
CONCRETE SIDEWALK O.L.S.	TRAFFIC SIGNALS CONCRETE	EAST DITCH
MANHOLE	CURB RENEWAL ELEVATIONS	WEST DITCH
CATCH BASIN	PROPERTY LINE SURVEY BAR	EAST PROPERTY LN
CURB INLET	PROPERTY LINE	WEST PROPERTY LN
SWALE	GEODETIC BENCH MARK	EAST TOC
TRAFFIC SIGNAL POLE	RAMP CURB	WEST TOC
FENCE LINE		BOW
EXISTING	LEGEND - PLAN	PROPOSED
PROPOSED	LEGEND - PROFILE	PROPOSED

LOCATION APPROVED UNDERGROUND STRUCTURES

SUPR. U/G STRUCTURES COMMITTEE DATE

NOTE:
LOCATION OF UNDERGROUND STRUCTURES AS SHOWN ARE BASED ON THE BEST INFORMATION AVAILABLE BUT NO GUARANTEE IS GIVEN THAT ALL EXISTING UTILITIES ARE SHOWN OR THAT THE GIVEN LOCATIONS ARE EXACT. CONFIRMATION OF EXISTENCE AND EXACT LOCATION OF ALL SERVICES MUST BE OBTAINED FROM THE INDIVIDUAL UTILITIES BEFORE PROCEEDING WITH CONSTRUCTION.

B.M. ELEV. GBM 76-022 233.014

NO.	REVISIONS	DATE	BY

**TRANSPORTATION ENGINEERING DIVISION
TECHNOLOGY SERVICES BRANCH
106 - 1155 PACIFIC AVE**

DESIGNED BY A.F./R.M. CHECKED BY A.F.
DRAWN BY R.M. APPROVED BY P.S. PAUL

HOR. SCALE: 1 : 250
VERTICAL: 1 : 10

DATE 2008/05/07

ENGINEER'S SEAL
PROVINCE OF MANITOBA
P.S. PAUL
REGISTERED ENGINEER

ORIGINAL SIGNED BY P.S. Paul May 20/08

**THE CITY OF WINNIPEG
PUBLIC WORKS DEPARTMENT**

BARNES STREET
FROM LEE BOULAVARD TO 200m NORTH OF LEE BOULAVARD
CONCRETE PAVEMENT SURFACING AND ASSOCIATED WORKS
FROM STA. 2+25 TO STA. 3+00

CITY DRAWING NUMBER SE-08-24
SHEET 2 OF 2

2