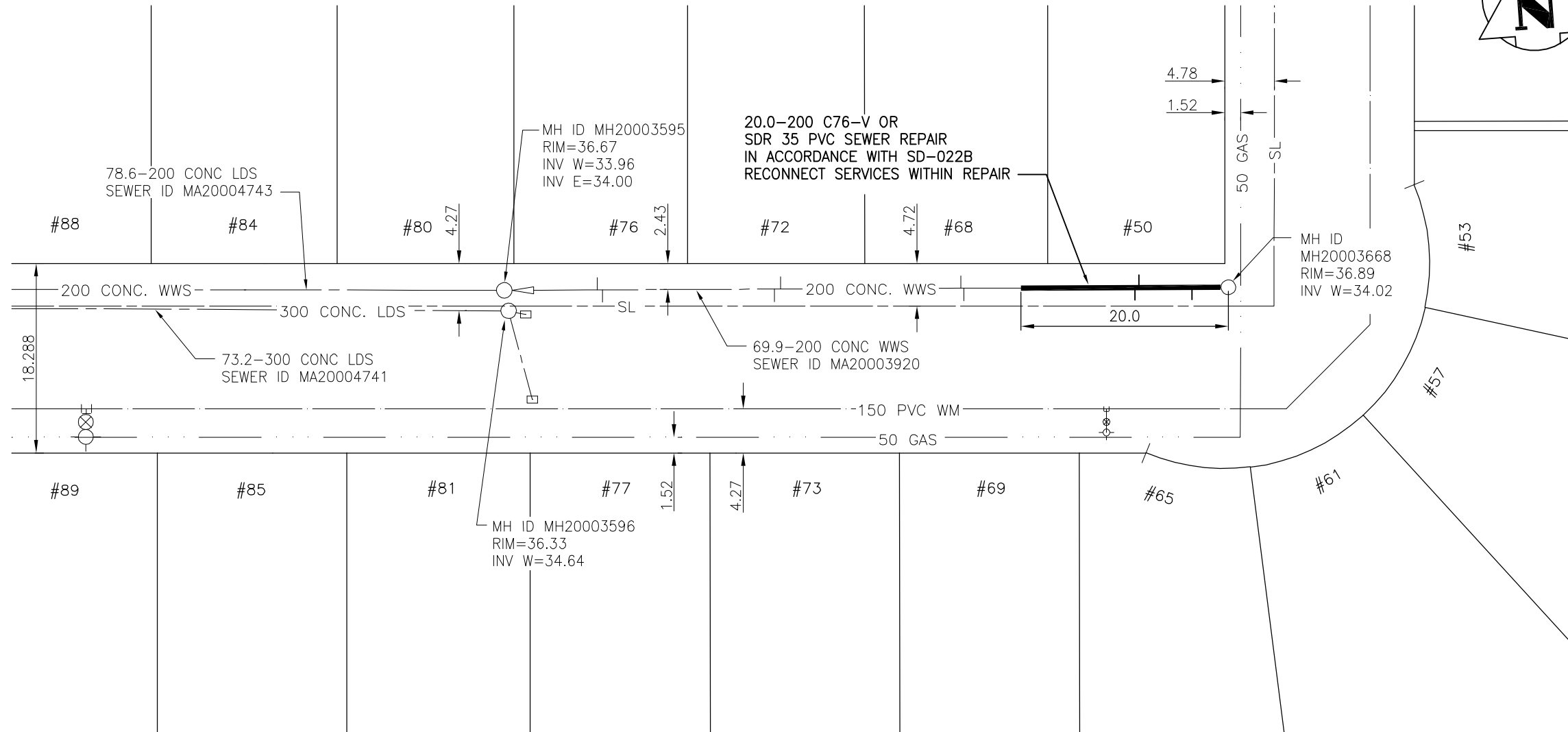
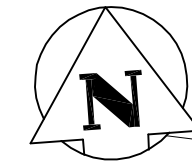


# MANITOU BY (SOUTH LEG)



### SEWER JUNCTION INFORMATION

REFERENCE—METERS EAST OF MANHOLE MH20003668

DIST. FROM REF. MANHOLE	JUNCTION DIA.	CLOCK REF.	SERVICE TYPE
3.5	150	10	CN
8.6	150	03	CN
9.0	150	10	CN
25.5	150	09	CN
25.8	150	02	CN
43.2	150	02	CN
43.8	150	10	CN
60.4	150	10	CNI
60.9	150	03	CN

ALL JUNCTION INFORMATION BASED ON CCTV INSPECTION

### METRIC

WHOLE NUMBERS INDICATE MILLIMETRES  
DECIMALIZED NUMBERS INDICATE METRES

### WARNING

IF POWER EQUIPMENT OR EXPLOSIVES ARE TO BE USED FOR EXCAVATION ON THIS PROJECT THE CONTRACTOR MUST:  
1) NOTIFY THE GAS COMPANY OF THE PROPOSED LOCATION OF EXCAVATION.  
2) TAKE PRECAUTION TO AVOID DAMAGE TO GAS COMPANY INSTALLATIONS.  
SEE PROVINCIAL REGULATION 140/92 FOR DETAILS

BENCH MARK: S. side Allard Ave. @ Best St.,  
tblt. in N. conc. foundation of Winnipeg Police  
Dept. Training Div., 0.3m E. & 0.5m below  
brick of N.W. cor. of bldg.



Certificate of Authorization

Stantec Consulting Ltd.

No. 1301 Expiry: April 30, 2009

BID OPPORTUNITY 391-2008

### LOCATION APPROVED UNDERGROUND STRUCTURES

SUPV. U/G STRUCTURES COMMITTEE DATE

### NOTE:

LOCATION OF UNDERGROUND STRUCTURES AS SHOWN ARE BASED ON THE BEST INFORMATION AVAILABLE BUT NO GUARANTEE IS GIVEN THAT ALL EXISTING UTILITIES ARE SHOWN OR THAT THE GIVEN LOCATIONS ARE EXACT. CONFIRMATION OF EXISTENCE AND EXACT LOCATION OF ALL SERVICES MUST BE OBTAINED FROM THE INDIVIDUAL UTILITIES BEFORE PROCEEDING WITH CONSTRUCTION.

B.M. 41-014  
ELEV. 238.623m

NO.	REVISIONS	DATE	BY

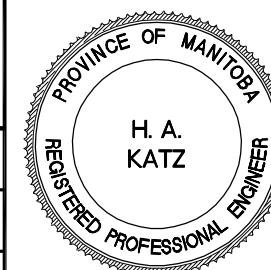


### Stantec Consulting Ltd.

905 Waverley Street, Winnipeg, Manitoba  
Tel 204-489-5900 Fax 204-453-9012

DESIGNED BY	J.K.H.	CHECKED BY	W.A.B.
DRAWN BY	W.B.G.	APPROVED BY	H.A.K.
HOR. SCALE:	1:500	RELEASED FOR CONSTRUCTION:	
VERTICAL:	N/A	DATE	
NO.	REVISIONS	DATE	BY
		08.04.22	

ENGINEER'S SEAL



CONSULTANT DRAWING NO.  
C-224



## THE CITY OF WINNIPEG WATER AND WASTE DEPARTMENT

2008 WATERMAIN RENEWALS, SEWER RENEWALS, AND EXTERNAL POINT REPAIRS - CONTRACT 7  
MANITOU BY (SOUTH LEG)  
2ND MH E. OF SUMACH ST. TO 1ST MH E. OF SUMACH  
200 WWS POINT REPAIR

SHEET	OF
24	26
CAD FILE DRAWING NUMBER 10340c-224-702.dwg	
CITY DRAWING NUMBER 08527	