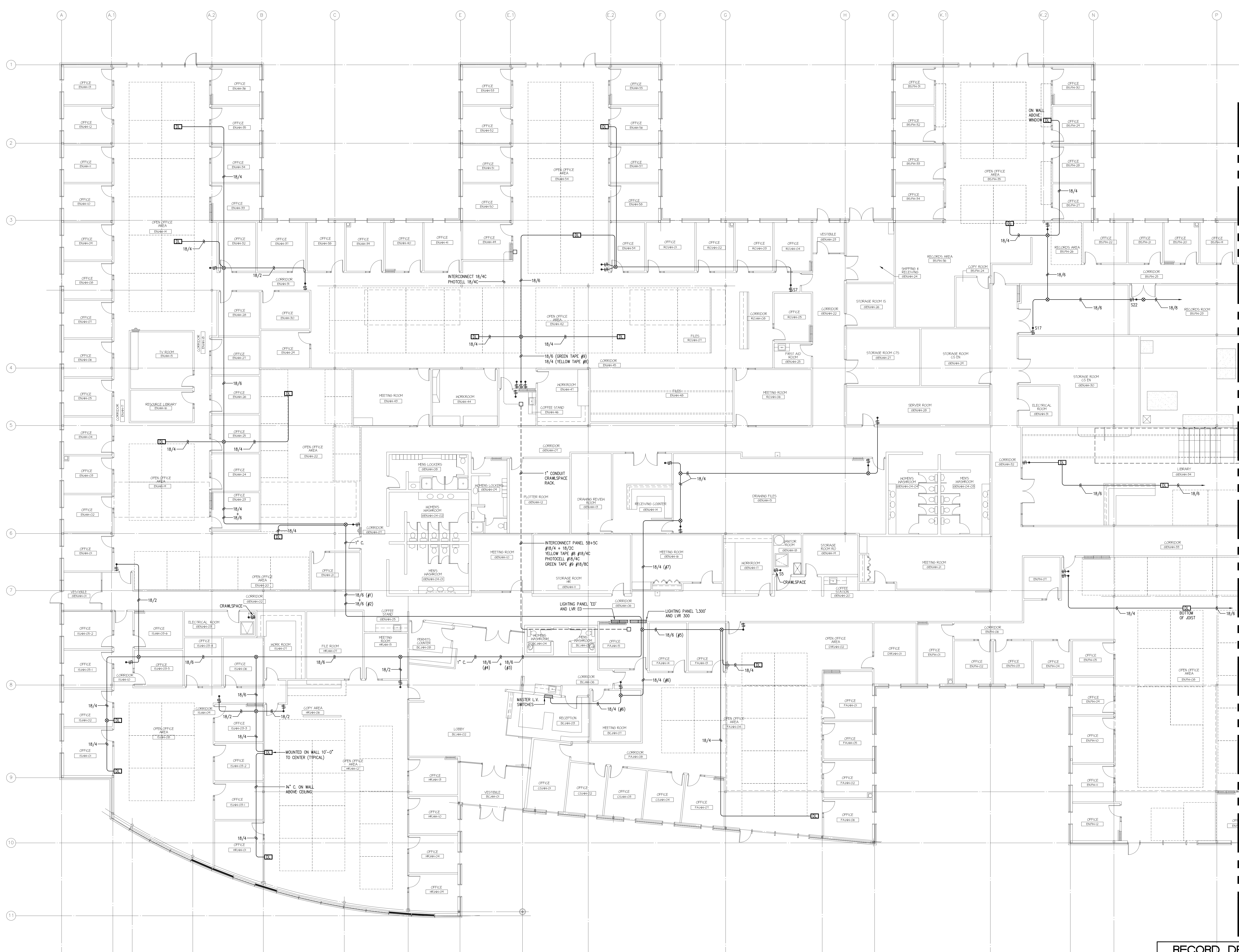


PROJECT NO:	AMP
DESIGNER:	CB
DATE:	MAY 2007
PROJECT NO.:	91716
FILE NO.:	
DATE:	AS BUILT JUNE 2007



FOR CONTINUATION REFER TO DRAWING E2.4

**SMS ENGINEERING**  
 SMS Engineering Ltd. Consulting Engineers  
 770 Bloor Street West, Suite 200  
 Telephone: (416) 778-0211 Fax: (416) 778-2150  
 www.smseng.com

Drawings and specifications, as instruments of service are the property of the architect. The copyright in the same being reserved to him. No reproduction may be made without the permission of the architect and when made, shall bear his name. All rights in the same shall be reserved to the architect. The contractor shall verify dimensions and data noted herein with conditions on the site and is held responsible for reporting any discrepancy to the architect for adjustment. This drawing shall not be used for building purposes until countersigned by:

THE CITY OF WINNIPEG

OFFICE ADDITION AND RENOVATION  
 1155 PACIFIC AVENUE  
 WINNIPEG, MANITOBA



**RECORD DRAWING**

CONTRACTOR: **Aleo Electrical Limited**  
 930 BRADFORD STREET  
 WINNIPEG, MANITOBA  
 (204) 697-1000

DATE COMPLETED: \_\_\_\_\_ SIGNED BY: \_\_\_\_\_

NOTES:  
 ① WASHROOM TO BE C/W CEILING MOUNTED DUAL-TEC SENSOR OCCUPANCY ON-OFF CONTROL OF LIGHTS.  
 ② LIGHTING LEVEL SENSOR AND OCCUPANCY SENSOR MOUNTED ON CEILING. PROGRAMMED TO TURN OFF ADJACENT FLOURESCENT LIGHTS.  
 ③ VALANCE LIGHTING.

NOTE: THIS RECORD DRAWING HAS BEEN PREPARED BASED UPON INFORMATION FURNISHED BY OTHERS. WHILE THIS INFORMATION IS BELIEVED TO BE RELIABLE, THE CONSULTANT CANNOT ASSURE ITS ACCURACY, AND THIS IS NOT RESPONSIBLE FOR ANY ERRORS OR OMISSIONS WHICH MAY HAVE BEEN INCORPORATED INTO IT AS A RESULT.

**PART MAIN FLOOR PLAN - PART A - LOW VOLTAGE SWITCHING**  
 SCALE 1/100

20080313.DWG - JANUARY 30, 2008 - 3:50PM CST - SMM/STW