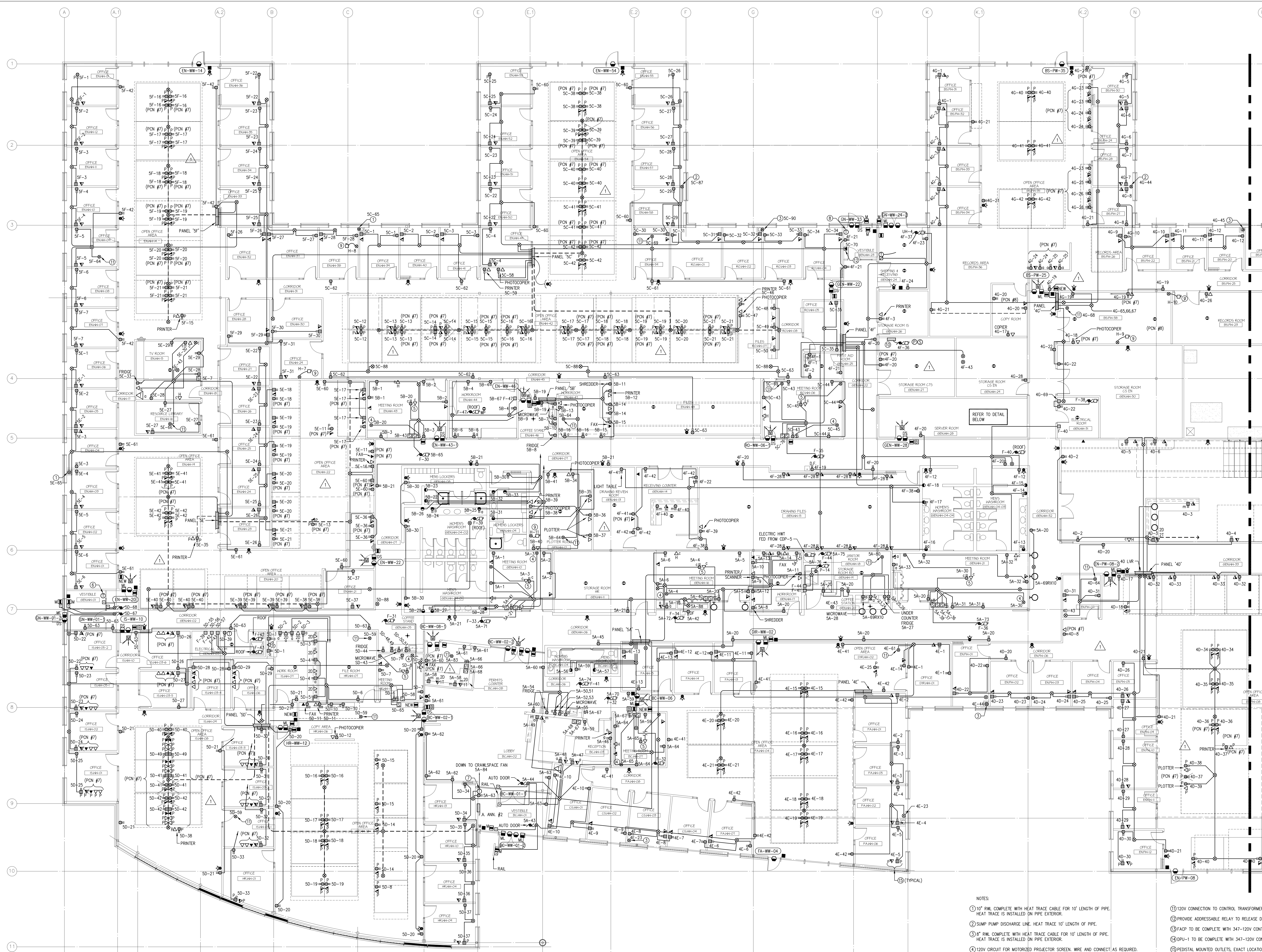


NOTES:  
 REFER TO PCN #7 FOR DESCRIPTION OF WORK IN THIS AREA.

FOR CONTINUATION REFER TO DRAWING E2.7



**SMS ENGINEERING**  
 SMS Engineering Ltd. Consulting Engineers  
 770 Bannockburn Street West, Suite 100  
 Winnipeg, Manitoba R2C 1P9  
 Telephone: 204.775.5291 Fax: 204.772.2150  
 smseng.com

02-019-01

ORIGINAL CONTRACT DRAWING  
 BORN AND SEALED BY  
 JAM. LOURSE, P. ENG.  
 MAY 13, 2004

**APEGM**  
 Certificate of Authorization  
 SMS Engineering Ltd.  
 No. 966 Expiry April 30, 2005

Drawings and specifications, as instruments of service are the property of the architect. The copyright in the same being reserved to the architect. No reproduction may be made without the permission of the architect and when made, must bear his name. All rights are reserved to the architect.  
 The contractor shall verify dimensions and data noted herein with conditions on the site and is held responsible for correcting any discrepancy to the architect for approval.  
 This drawing shall not be used for building purposes until countersigned by:

THE CITY OF WINNIPEG

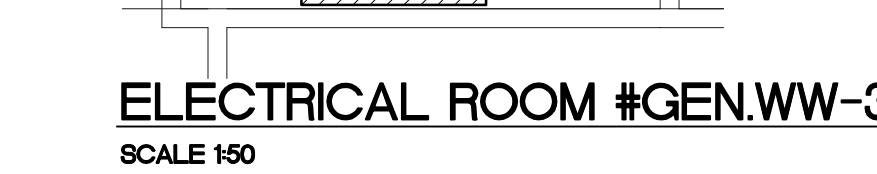
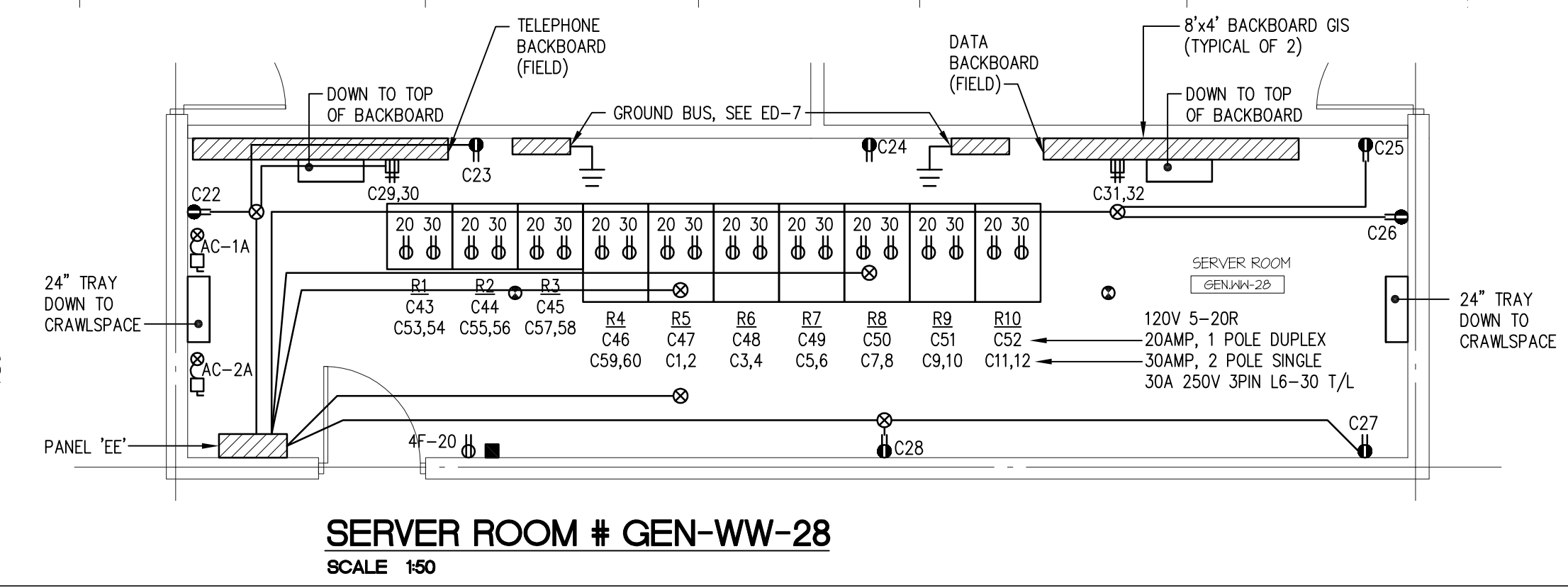
OFFICE ADDITION AND RENOVATIONS  
 1155 PACIFIC AVENUE  
 WINNIPEG, MANITOBA

**FRIESEN TOKAR ARCHITECTS**

MAIN FLOOR PLAN PART A  
 POWER AND SYSTEMS

**E2.6.1**

- NOTES:
- 12" RW COMPLETE WITH HEAT TRACE CABLE FOR 10' LENGTH OF PIPE. HEAT TRACE IS INSTALLED ON PIPE EXTERIOR.
  - SUMP PUMP DISCHARGE LINE. HEAT TRACE 10' LENGTH OF PIPE.
  - 8" RW COMPLETE WITH HEAT TRACE CABLE FOR 10' LENGTH OF PIPE. HEAT TRACE IS INSTALLED ON PIPE EXTERIOR.
  - 120V CIRCUIT FOR MOTORIZED PROJECTOR SCREEN. WIRE AND CONNECT AS REQUIRED.
  - 120V CIRCUIT FOR CEILING MOUNTED PROJECTOR. CEILING MOUNTED OUTLET BOX C/W FACELATE. W/ SAT DOWN TO WALL MOUNTED OUTLET BOX. PROVIDE FACELATE C/W 1/2" BUSHED HOLE AND PULLSTRINGS.
  - THERMOSTAT DOWN TO FC-7 IN CRAWLSPACE.
  - THERMOSTAT DOWN TO FC-8 IN CRAWLSPACE.
  - THERMOSTAT DOWN TO FC-9 IN CRAWLSPACE.
  - HUMIDIFIER MOUNTED IN CEILING SPACE.
  - PRE-ACTION SPRINKLER SYSTEM PRESSURE SWITCH, SOLENOID AND COMPRESSOR. PROGRAM TO ACTIVATE SOUND IN BOTH SMOKE DETECTORS IN ROOM GEN-WW-28 OR GEN-WW-24 ACTIVATE OR IF THE MANUAL STATION IN GEN-WW-28 OR GEN-WW-24 IS PULLED.
  - 120V CONNECTION TO CONTROL TRANSFORMER FOR MECHANICAL CONTROLS.
  - PROVIDE ADDRESSABLE RELAY TO RELEASE DOOR HOLDER ON FIRE ALARM SIGNAL.
  - FACP TO BE COMPLETE WITH 347-120V CONTROL TRANSFORMER OF ADEQUATE CAPACITY.
  - DPU-1 TO BE COMPLETE WITH 347-120V CONTROL TRANSFORMER OF ADEQUATE CAPACITY.
  - PRECAST MOUNTED OUTLETS. EXACT LOCATION TO BE DETERMINED ON SITE. MOUNT AS CLOSE AS POSSIBLE TO EXTERIOR WALLS (TYPICAL).
  - 24" WIDE CABLE TRAY MOUNTED ABOVE LAN RACKS (AT APPROXIMATELY 4' AFF.).
  - REFER TO DETAIL SHEET ED-4. CONFIRM RACK LAYOUT WITH OWNER PRIOR TO FIT-UP (10 RACKS).



**PART MAIN FLOOR PLAN - PART A - POWER AND SYSTEMS**  
 SCALE 1/100

DATE: 02/26/04 10:56 AM - JANUARY 30, 2008 - 3:44PM CST - REVISED