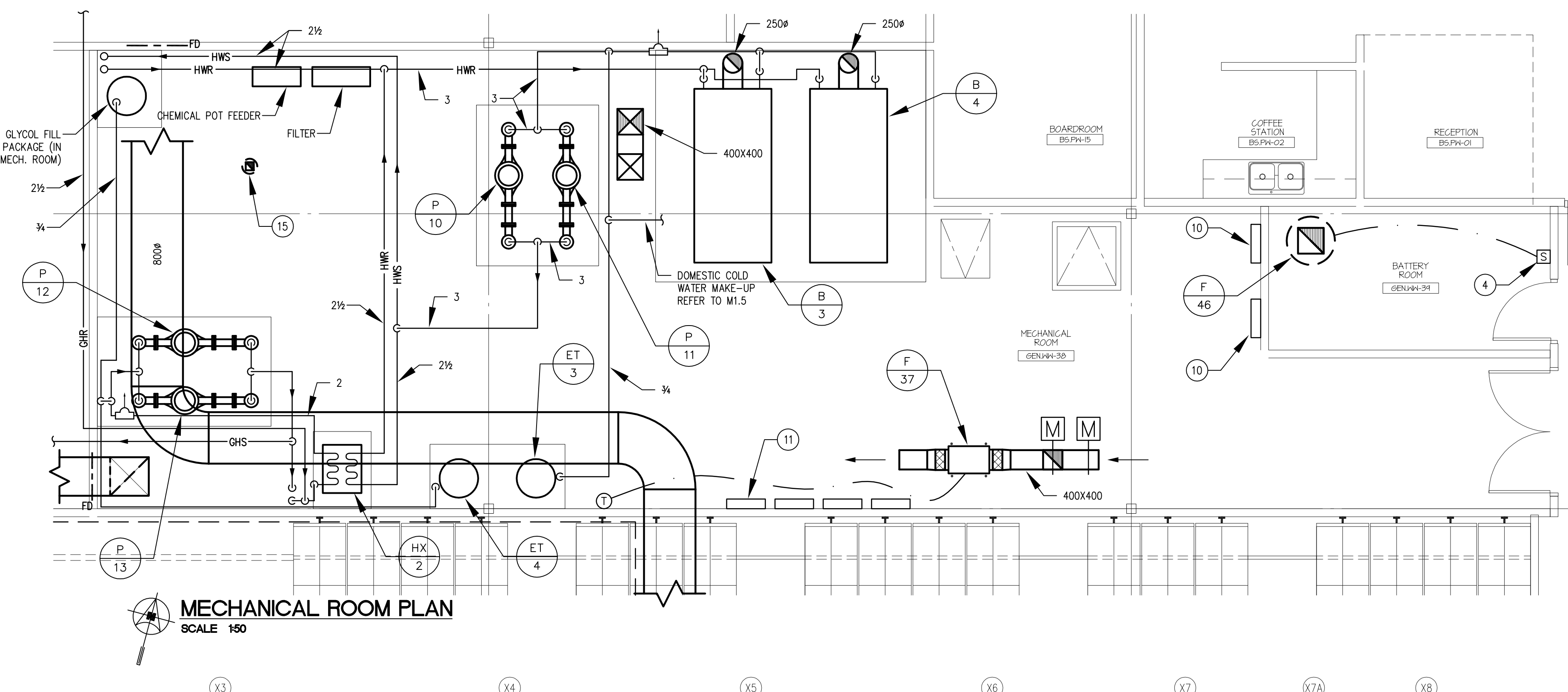


GENERAL NOTES:

- A. RETURN GRILLES IN ACOUSTIC TILE CEILINGS ARE TO BE 600X150 OR 600X300 AS SHOWN ON PLANS.
- B. ALL CONTROL VALVES FOR WALL-FPN TO BE LOCATED IN THE OFFICE SPACE. (NEW ADDITION ONLY).
- C. VESTIBULE FAN COIL UNITS TO HAVE FAN CYCLE TO MAINTAIN SET POINT.
- D. AHU-5 TO HAVE A 3-WAY CONTROL VALVE ON THE HEATING COIL.
- E. DV 15000 TO PROVIDE CONTROL TRANSFORMERS AND WIRING TO DEVICES, DIV 16 TO PROVIDE 120V POWER TO TRANSFORMERS.
- F. DOC SENSORS ARE TO BE MOUNTED IN EACH OF THE 5 AHU SERVICE CORRIDORS TO MONITOR SPACE CONDITIONS.
- G. ALL EXPOSED ROUND DUCTWORK TO BE SPIRAL DUCTWORK.
- H. EXISTING HEATING PUMPS AND AIR HANDLING UNITS TO BE REBALANCED.
- I. TRANSFER ELBOWS WITHOUT ATTACHED GRILLE TO BE 300X300 UNLESS NOTED OTHERWISE. TRANSFER ELBOWS WITH GRILLE ARE TO BE THE SIZE OF THE GRILLE UNLESS NOTED OTHERWISE.
- J. ALL GAS FIRED RADIANT HEATING EQUIPMENT TO BE REMOVED FROM FORMER GARAGE AREA.

DRAWING NOTES:

1. 300X300 SUPPLY DUCT DOWN TO CRAWLSPACE/BASEMENT BELOW.
2. 600X900 LOUVER AND MOTORIZED DAMPER RELOCATED.
3. DOWN TO THERMOSTAT IN BASEMENT.
4. HYDROSEN SENSOR MOUNTED 300mm BELOW CEILING OR IN ACCORDANCE WITH MANUFACTURER'S RECOMMENDATIONS. SENSOR TO PROVIDE POINTS FOR EXHAUST FAN OPERATION.
5. AHU-5 ROOFTOP MOUNTED AIR HANDLING UNIT. CONSTANT VOLUME.
6. HEATING SUPPLY AND RETURN PIPING RUN IN CEILING SPACE.
7. GLYCOL SUPPLY AND RETURN PIPING RUN TO ROOFTOP AIR HANDLING UNIT.
8. GHS, GHR, HWS AND HWR PIPING RUN IN MAIN FLOOR CEILING.
9. PROVIDE SOUND Baffle AT TRANSFER OPENING. REFER TO SPECIFICATION DETAILS. INSTALL FOR SIDEWALL APPLICATION.
10. METASTAS CONTROL PANELS.
11. VARIABLE FREQUENCY DRIVES FOR PUMPS.
12. EXISTING VACUUM PUMPS SERVING GAS-FIRED RADIANT HEATERS TO BE REMOVED.
13. EXISTING FAN/DAMPER TO BE REMOVED.
14. EXISTING ROOFTOP RELIEF TO BE REMOVED.
15. BOILER ROOM VENT OPENING. REFER TO M2.3.
16. HUMIDIFIER MOUNTED IN AIR HANDLING UNIT SERVICE CORRIDOR.
17. EXHAUST FAN C/W 300X300 DUCT TO TYPE E EGG GRATE CEILING.
18. LIBERTY MINI MATE 2, 8-TON AIR COOLED UNIT MOUNTED IN CEILING SPACE.
19. LIBERTY AIR COOLED CONDENSING UNIT MOUNTED ON ROOF.



MECHANICAL ROOM PLAN
 SCALE 1/50

RECORD DRAWING

CONTRACTOR:
 MANTEC MECHANICAL CONTRACTORS AND AIR CONDITIONING LTD
 1344 SPRUCE STREET
 WINNIPEG, MANITOBA
 R2E 2V7
 PH: 783-2234 FAX: 783-2235

DATE COMPLETED: MARCH 14, 2007 SIGNED BY: BUD MELNYK

NOTICE: THIS RECORD DRAWING HAS BEEN PREPARED, BASED UPON INFORMATION FURNISHED BY OTHERS. WHILE THIS INFORMATION IS BELIEVED TO BE RELIABLE, THE CONTRACTOR CANNOT ASSURE ITS ACCURACY, AND HAS NO RESPONSIBILITY FOR ANY ERRORS OR OMISSIONS WHICH MAY HAVE BEEN INCORPORATED INTO IT AS A RESULT.

SMS ENGINEERING

SMS Engineering Ltd. Consulting Engineers
 770 Bloor Street West, Suite 400 (at King)
 Toronto, Ontario M5S 1A5
 Telephone: (416) 591-1111 Fax: (416) 591-1112
 smsengineering.com

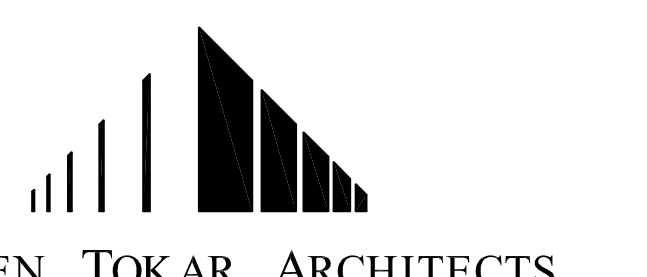
ORIGINAL CONTRACT DRAWING
 BORNED AND SEALED BY
 V.S. WALKERS P. ENG.
 MAY 14, 2004

APECM
 Certificate of Authorization
 SMS Engineering Ltd.
 No. 166 Expiry: April 30, 2006

Drawings and specifications, as instruments of service are the property of the architect. The copyright in the same being reserved to him. No reproduction may be made without the permission of the architect and when made, must bear his name. All rights to be returned to the architect. The contractor shall verify dimensions and data noted herein with conditions on the site and will be responsible for notifying any discrepancy to the architect for correction. This drawing shall not be used for building purposes until countersigned by:

THE CITY OF WINNIPEG

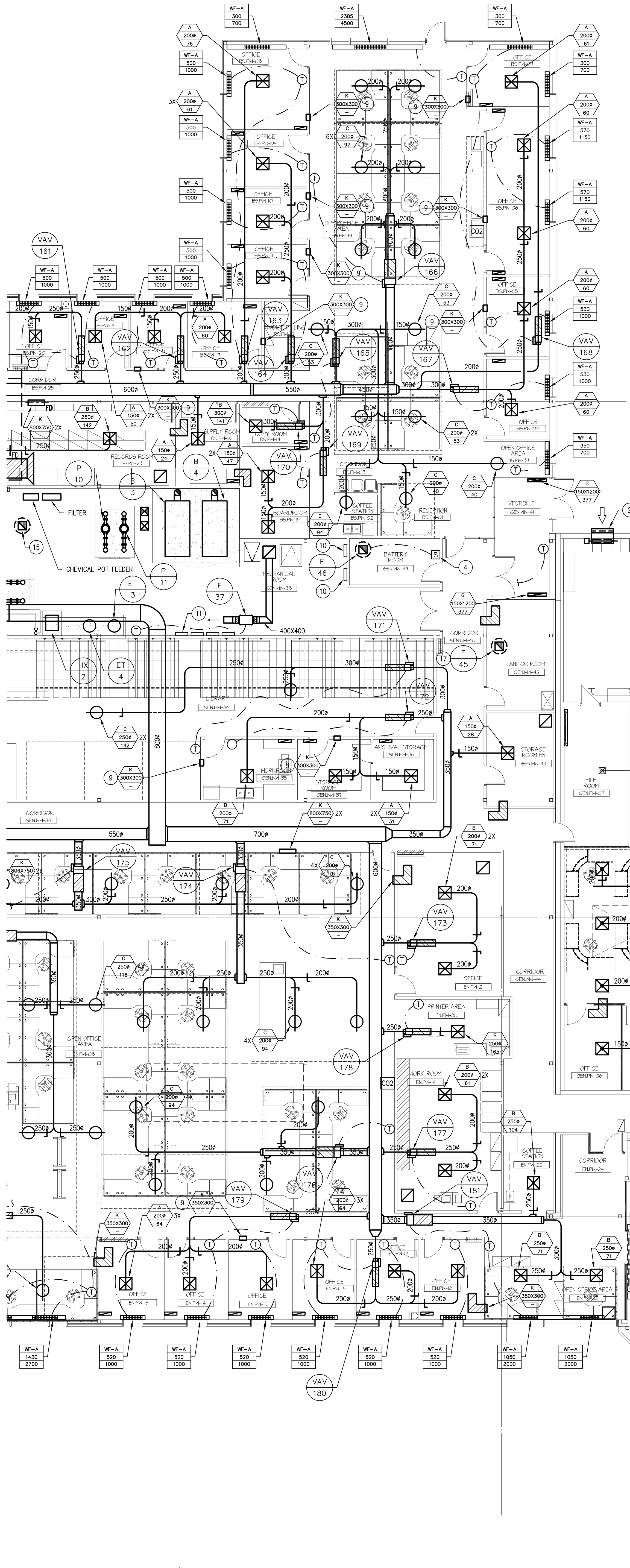
OFFICE ADDITION AND RENOVATION
 1155 PACIFIC AVENUE
 WINNIPEG, MANITOBA



FRIESEN TOKAR ARCHITECTS

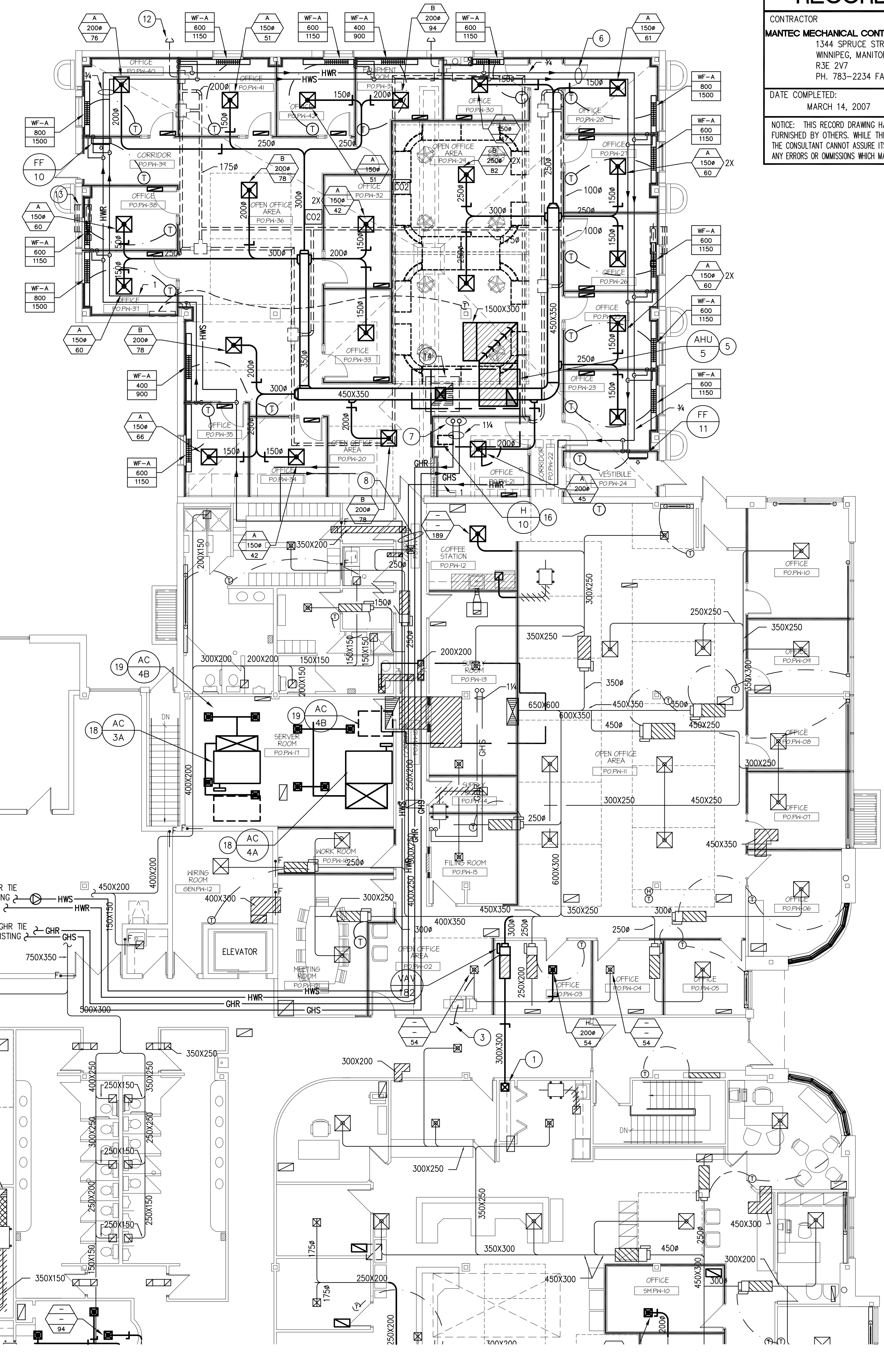
DATE: M2.4AB
 H.V.A.C.

FOR CONTINUATION, REFER TO DRAWING M2.3



MAIN FLOOR PLAN - PART B
 SCALE 1/50

FOR CONTINUATION, REFER TO DRAWING M2.5



M2.4AB