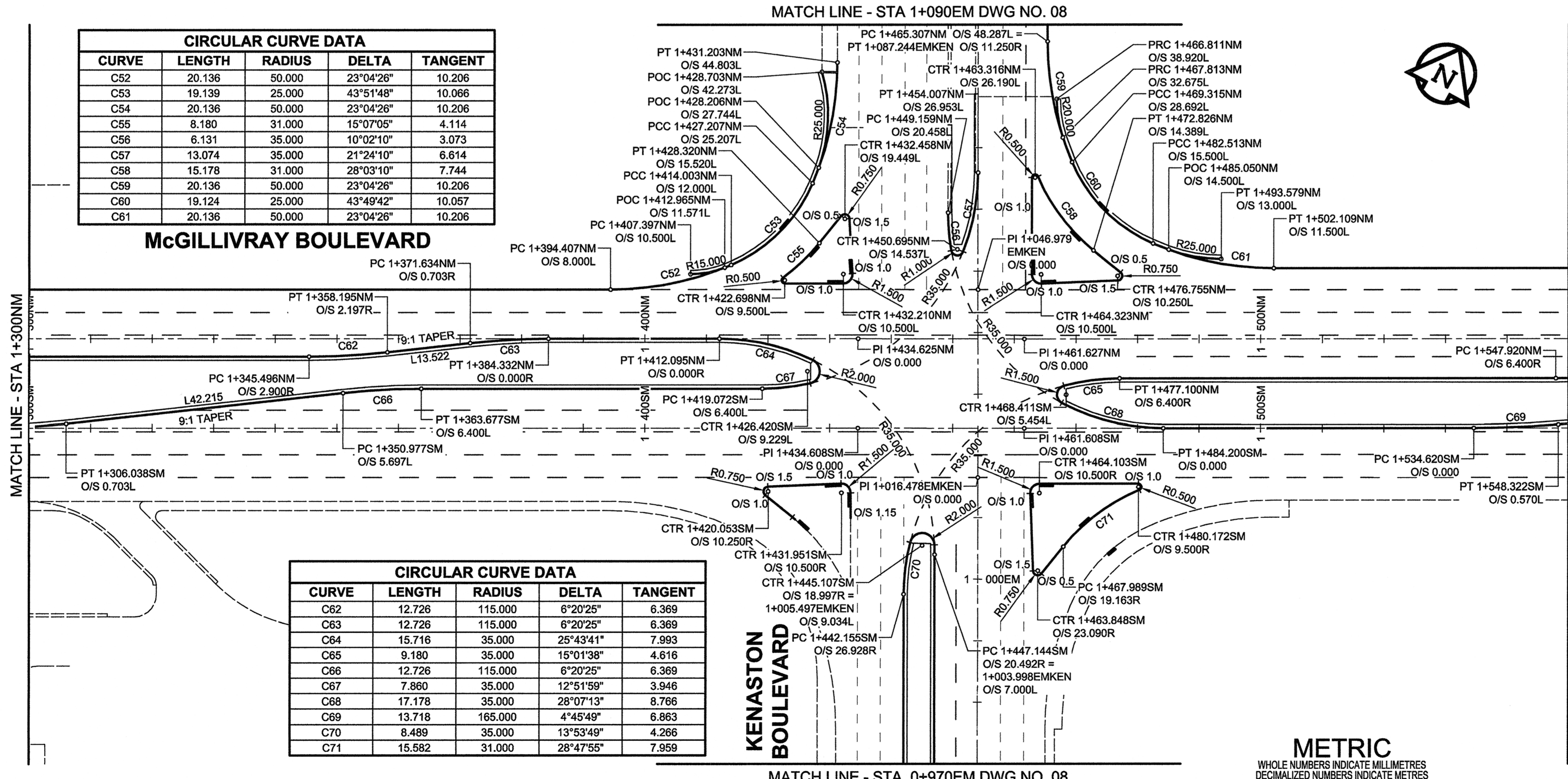


CIRCULAR CURVE DATA				
CURVE	LENGTH	RADIUS	DELTA	TANGENT
C27	15.891	50.000	18°12'37"	8.013
C28	14.901	9.000	94°51'49"	9.798
C29	14.137	9.000	90°00'00"	9.000
C30	9.425	6.000	90°00'00"	6.000
C31	9.425	6.000	90°00'00"	6.000
C32	12.387	12.000	59°08'34"	6.809
C33	3.997	6.000	38°10'23"	2.076
C34	2.043	12.000	9°45'18"	1.024
C35	16.875	8.000	120°51'26"	14.099
C36	13.776	15.000	52°37'20"	7.417
C37	2.835	47.000	3°27'20"	1.418
C38	9.310	47.000	11°20'59"	4.670

CIRCULAR CURVE DATA				
CURVE	LENGTH	RADIUS	DELTA	TANGENT
C39	31.634	15.000	120°50'00"	26.423
C40	13.718	165.000	4°45'49"	6.863
C41	13.718	165.000	4°45'49"	6.863
C42	13.588	20.000	38°55'40"	7.068
C43	13.813	20.000	39°34'18"	7.195
C44	12.263	20.000	35°07'52"	6.331
C45	3.491	25.000	8°00'05"	1.748
C46	13.718	165.000	4°45'49"	6.863
C47	7.336	20.000	21°00'53"	3.709
C48	13.718	165.000	4°45'49"	6.863
C49	19.067	50.000	21°50'58"	9.651
C50	16.374	20.000	46°54'24"	8.677
C51	12.726	115.000	6°20'25"	6.369

CIRCULAR CURVE DATA				
CURVE	LENGTH	RADIUS	DELTA	TANGENT
C52	20.136	50.000	23°04'26"	10.206
C53	19.139	25.000	43°51'48"	10.066
C54	20.136	50.000	23°04'26"	10.206
C55	8.180	31.000	15°07'05"	4.114
C56	6.131	35.000	10°02'10"	3.073
C57	13.074	35.000	21°24'10"	6.614
C58	15.178	31.000	28°03'10"	7.744
C59	20.136	50.000	23°04'26"	10.206
C60	19.124	25.000	43°49'42"	10.057
C61	20.136	50.000	23°04'26"	10.206



CIRCULAR CURVE DATA				
CURVE	LENGTH	RADIUS	DELTA	TANGENT
C62	12.726	115.000	6°20'25"	6.369
C63	12.726	115.000	6°20'25"	6.369
C64	15.716	35.000	25°43'41"	7.993
C65	9.180	35.000	15°01'38"	4.616
C66	12.726	115.000	6°20'25"	6.369
C67	7.860	35.000	12°51'59"	3.946
C68	17.178	35.000	28°07'13"	8.766
C69	13.718	165.000	4°45'49"	6.863
C70	8.489	35.000	13°53'49"	4.266
C71	15.582	31.000	28°47'55"	7.959

HARRIS HOLDINGS PARKING LOT CONTROL POINT COORDINATES		
POINT/STATION	NORTHING	EASTING
#1	9921.333	9720.980
#2	9922.365	9719.298
#3	9922.582	9712.991
#4	9940.572	9713.610
#5	9940.396	9718.703
#6	9941.361	9719.737
#7	9948.651	9719.988
#8	9948.444	9725.985
#9	9942.352	9725.775
#10	9941.318	9726.740
#11	9940.966	9736.392
#12	9930.479	9742.189
#13	9923.721	9729.941
#14	9919.645	9728.764

McGILLIVRAY BOULEVARD NORTH MEDIAN CONTROL POINT COORDINATES		
POINT/STATION	NORTHING	EASTING
PI 1+434.625	10057.102	10022.800
PI 1+461.627	10070.090	10046.473

McGILLIVRAY BOULEVARD SOUTH MEDIAN CONTROL POINT COORDINATES		
POINT/STATION	NORTHING	EASTING
PI 1+434.608	10044.398	10029.790
PI 1+461.608	10057.385	10053.462

Scale: 0 5 10 15 m H=1:500

**APEGM**  
 Certificate of Authorization  
 UMA Engineering Ltd. (MB)  
 No. 256 Date: June 27, 08

EXISTING	LEGEND - PLAN	NEW	EXISTING	LEGEND - PLAN	NEW	EXISTING	LEGEND - PLAN	NEW
○	NATURAL GAS	○	MANHOLE	●	CONCRETE PAVEMENT	□	LOCATION APPROVED	BM -
○	MTS	□	CATCH BASIN / CATCH PIT	■	ASPHALT PAVEMENT	□	UNDERGROUND STRUCTURES	ELEV -
○	HYDRO	△	CURB INLET WITH BOX	▲	CONC. SIDEWALK/MEDIAN	□	DATE	
○	CATV	○	TREE	■	PAVING STONE	□	DATE	
○	TRAFFIC SIGNALS/PIT	○	TEST HOLE	■	GRAVEL	□	NOTE:	
○	LAND DRAINAGE SEWER	○	PROPERTY LINE	■	RAMP CURB	□	LOCATION OF UNDERGROUND STRUCTURES	
○	SANITARY/COMBINED SEWER	○	SURVEY BAR	■	PLANING/REMOVAL	□	AS SHOWN ARE BASED ON THE BEST	
○	SSP/DCP	○	FENCE	■	GLASS GRID PAVT REPAIR	□	INFORMATION AVAILABLE. BUT NO	
○	WATERMAIN	○	BOC/EOPAVT	■		□	GUARANTEE IS GIVEN THAT ALL EXISTING	
○	SUBDRAIN	○	ELEVATION	■		□	UTILITIES ARE SHOWN OR THAT THE GIVEN	
○	DITCH	○	TRAFFIC SIGN	■		□	LOCATIONS ARE EXACT. CONFIRMATION OF	
○		○		■		□	EXISTENCE AND EXACT LOCATION OF ALL	
○		○		■		□	SERVICES MUST BE OBTAINED FROM THE	
○		○		■		□	INDIVIDUAL UTILITIES BEFORE PROCEEDING	
○		○		■		□	WITH CONSTRUCTION.	

DESIGNED BY	WRJ	CHECKED BY	JGK
DRAWN BY	DID	APPROVED BY	BWB
HOR. SCALE	1:500	RELEASED FOR CONSTRUCTION	
VERT. SCALE	N/A	DATE	08/06/07
NO. REVISIONS		DATE	08/06/07

DATE	BY
08/06/07	DID
08/06/07	DID

**UMA AECOM**

© 2008 UMA ENGINEERING LTD. ALL RIGHTS RESERVED.

PROFESSIONAL'S SEAL  
 PROVINCE OF MANITOBA  
 R. P. BRUCE  
 REGISTERED PROFESSIONAL ENGINEER

CONSULTANT DRAWING NO.  
 0265-406-00\_01-CT1002\_RX.dwg

**THE CITY OF WINNIPEG**  
 PUBLIC WORKS DEPARTMENT  
 TRANSPORTATION ENGINEERING DIVISION

**McGILLIVRAY BOULEVARD**  
 120m WEST OF KENASTON BOULEVARD  
 TO WAVERLEY STREET  
 WIDENING AND REHABILITATION  
 HORIZONTAL GEOMETRY  
 STA 1+050NM TO STA 1+550NM

CITY DRAWING NUMBER  
 P-3294-02  
 SHEET 2 OF 44  
 DRAWING No. 02 REV 0

BID OPPORTUNITY NO. 466-2008