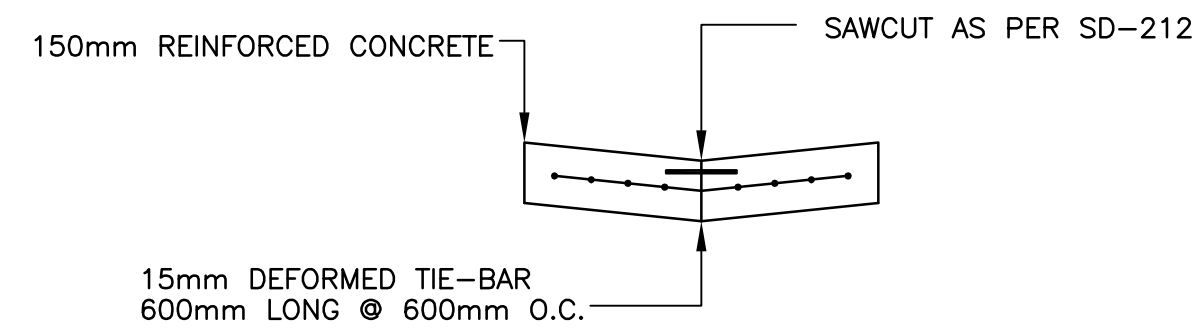


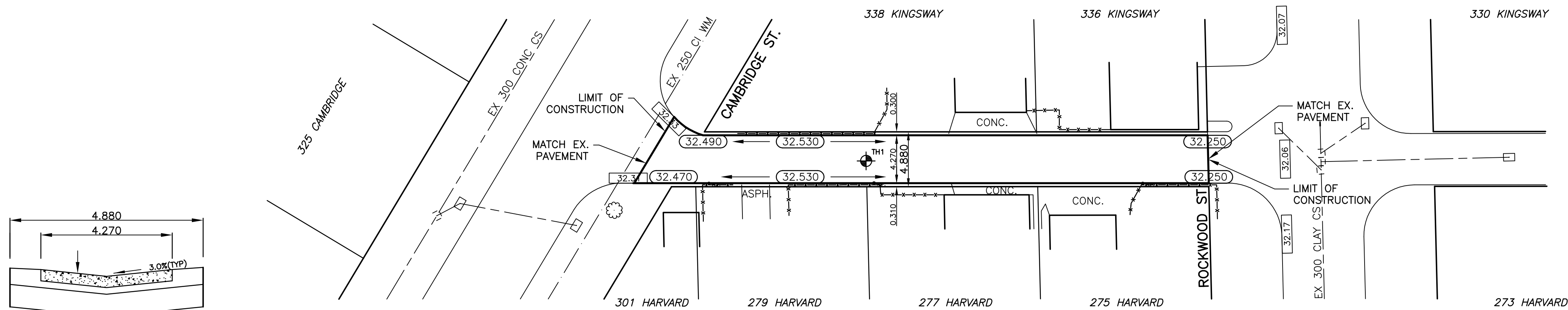
CHAINAGE ALONG CENTER OF ROW

NOTES:

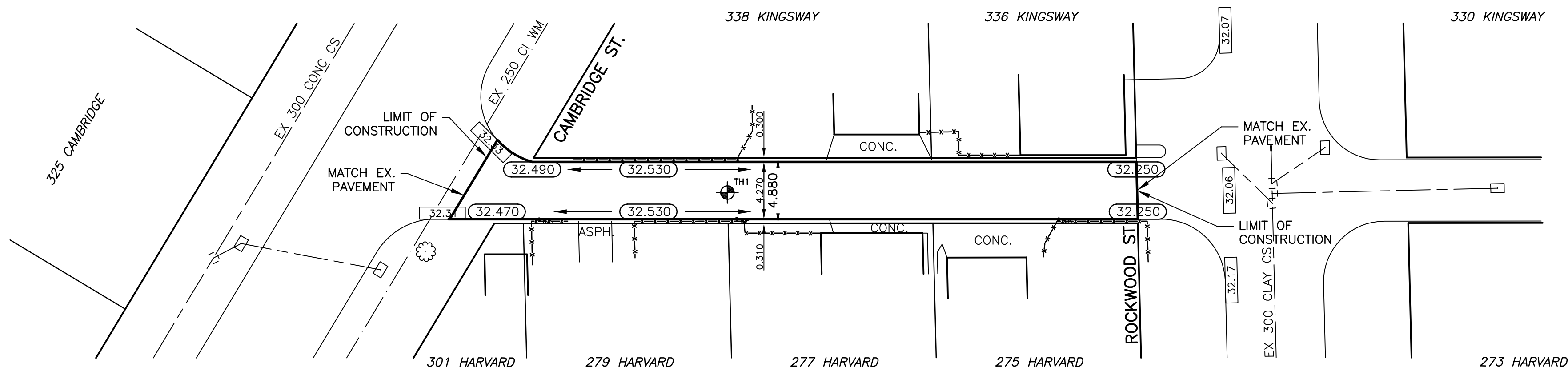
1. ISOLATE EXISTING HYDRO POLES AS DIRECTED BY CONTRACT ADMINISTRATOR
2. RENEW EXISTING APPROACHES AS DIRECTED BY CONTRACT ADMINISTRATOR



TYPICAL PAVEMENT CROSS SECTION
N.T.S.



LANE CROSS SECTION
N.T.S.



BENCHMARK:
S.W. CORNER GROSVENOR AVE. & WILTON ST. TBLT. IN N. CONC.
WALL OF ST. GEORGES ANGLICAN CHURCH, NO. 1118 GROSVENOR AVE.,
1.0m E. & 0.5m BELOW TYNDAL STONE OF N.W. COR. CHURCH

METRIC
WHOLE NUMBERS INDICATE MILLIMETRES
DECIMALIZED NUMBERS INDICATE METRES

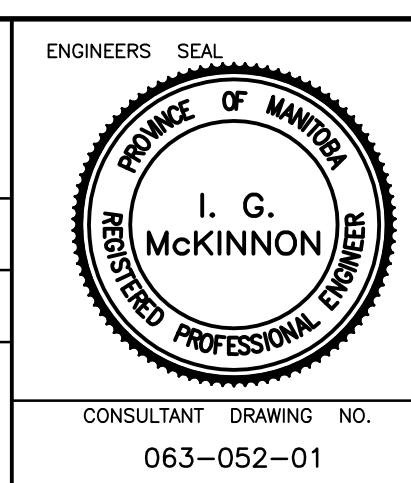


| EXISTING | | PROPOSED | | EXISTING | | PROPOSED | |
|----------|---------------------|----------|---------------|----------|---------------------|----------|-------------------|
| LEGEND | PLAN | LEGEND | PLAN | LEGEND | PROFILE | LEGEND | PROFILE |
| --- | WATERMAIN | --- | HYDRO | --- | CENTER LINE | --- | LOCATION APPROVED |
| + | HYDRANT | + | M.T.S. | --- | NORTH GUTTER LINE | --- | DATE |
| + | VALVE | + | CONCRETE | --- | SOUTH GUTTER LINE | --- | DATE |
| --- | LAND DRAINAGE SEWER | --- | ASPHALT | --- | WATERMAIN | --- | DATE |
| --- | WASTE WATER SEWER | --- | PROPERTY LINE | --- | VALVE | --- | DATE |
| ○ | MANHOLE | ○ | SURVEY BAR | --- | LAND DRAINAGE SEWER | --- | DATE |
| □ | CATCH BASIN | □ | CURB STOP | --- | WASTE WATER SEWER | --- | DATE |
| △ | CURB INLET | △ | C.B. LEAD | --- | JUNCTIONS | --- | DATE |
| --- | TRAFFIC SIGNAL | --- | SIDEWALK | --- | TESTHOLE | --- | DATE |
| --- | STEAM HT. | --- | SIDEWALK RAMP | --- | ASPH./CONC. PAD | --- | DATE |
| --- | GAS | --- | ELEVATIONS | --- | GARAGE PAD | --- | DATE |

| NO. | REVISIONS | DATE | BY |
|-----|-----------|------|----|
| | | | |

GENIVAR
200 TACHE AVENUE WINNIPEG, MANITOBA R2H 1A7
PH: (204)-233-2113 FAX: (204)-233-2080

DESIGNED BY: R.H. CHECKED BY: S.M.
DRAWN BY: R.H. APPROVED BY: I.McK.
HOR. SCALE: 1:250
VERT. SCALE: 1:10
DATE: JUNE 2008



THE CITY OF WINNIPEG
PUBLIC WORKS DEPARTMENT

2008 RECONSTRUCTION AND ALLEY RENEWALS
KINGSWAY / HARVARD LANE
LANE PAVEMENT
FROM CAMBRIDGE STREET
TO ROCKWOOD STREET

CITY DRAWING NO.
SHEET 1 OF 1
470-2008