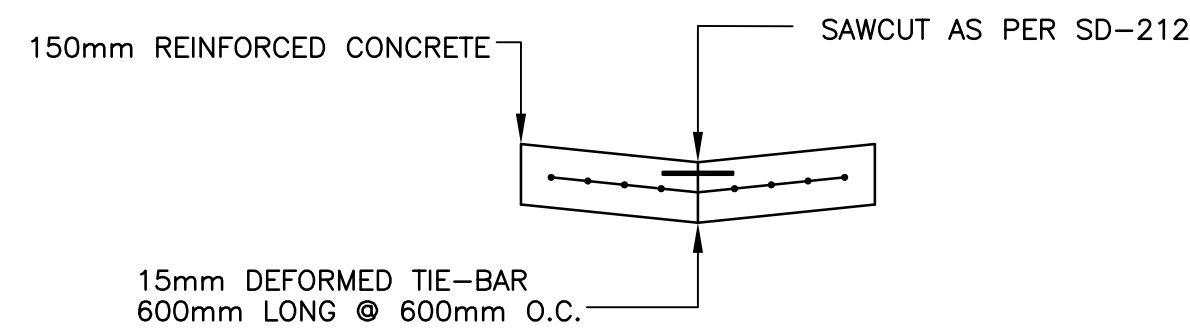


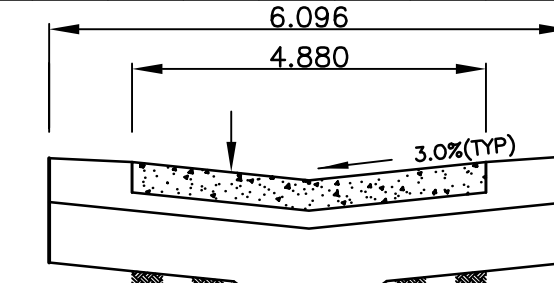
**NOTES:**

1. ISOLATE EXISTING HYDRO POLES AS DIRECTED BY CONTRACT ADMINISTRATOR
2. RENEW EXISTING APPROACHES AS DIRECTED BY CONTRACT ADMINISTRATOR
3. EXTEND SUBDRAINS AS DIRECTED BY CONTRACT ADMINISTRATOR
4. ADDITIONAL EXCAVATION AND INSTALLATION OF SUBGRADE GEOTRID TO BE DETERMINED BY CONTRACT ADMINISTRATOR

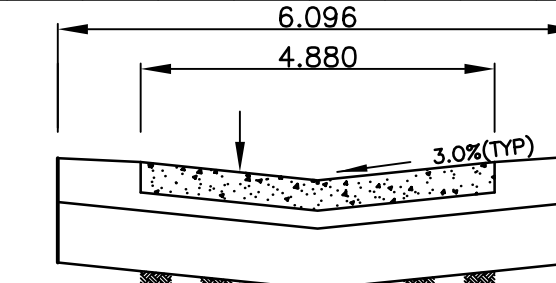


**TYPICAL PAVEMENT CROSS SECTION**  
N.T.S.

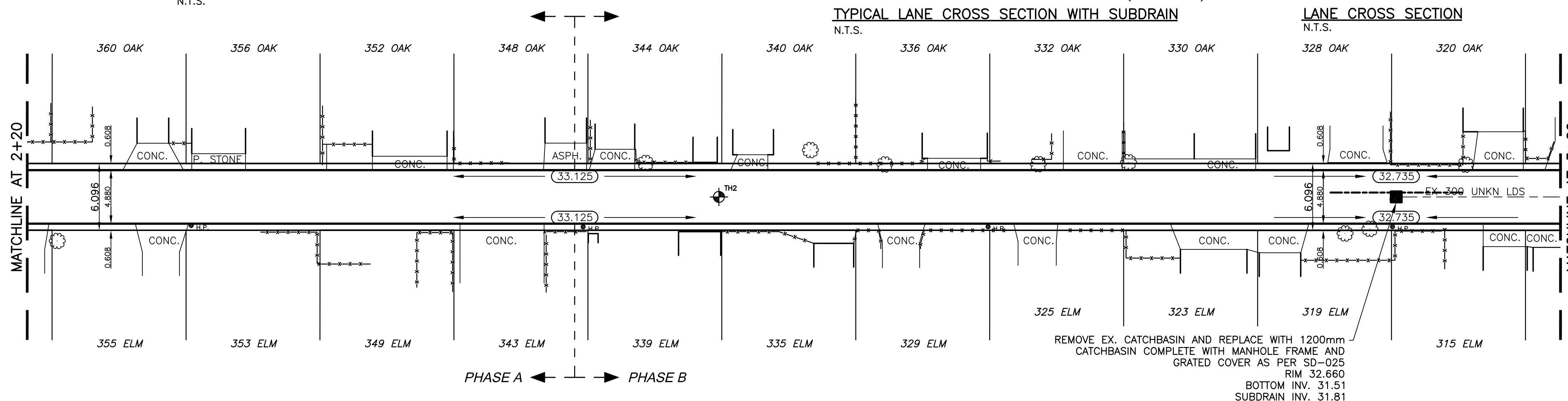
**CHAINAGE ALONG CENTER OF ROW**



**TYPICAL LANE CROSS SECTION WITH SUBDRAIN**  
N.T.S.



**LANE CROSS SECTION**  
N.T.S.



**BENCHMARK:**  
S.E. COR. OF GROSVENOR AVE. & LANE E. OF ASH ST.  
119mm DIA. x 6.1m I.B. IN VALVE BOX, 2.0m E. OF E.L. OF LANE & 1.0m S. OF S.L. OF GROSVENOR AVE.

**METRIC**  
WHOLE NUMBERS INDICATE MILLIMETRES  
DECIMALIZED NUMBERS INDICATE METRES

INSTALL PVC SUBDRAINS BETWEEN STA. 3+39 AND 3+51

	WATERMAIN		HYDRO
	HYDRANT		M.T.S.
	VALVE		CONCRETE
	LAND DRAINAGE SEWER		ASPHALT
	WASTE WATER SEWER		PROPERTY LINE
	MANHOLE		SURVEY BAR
	CATCH BASIN		CURB STOP
	CURB INLET		C.B. LEAD
	TRAFFIC SIGNAL		SIDEWALK
	STEAM HT.		SIDEWALK RAMP
	GAS		ELEVATIONS
	EXISTING		PROPOSED

	CENTER LINE
	NORTH GUTTER LINE
	SOUTH GUTTER LINE
	WATERMAIN
	VALVE
	LAND DRAINAGE SEWER
	WASTE WATER SEWER
	JUNCTIONS
	TESTHOLE
	ASPH./CONC. PAD
	GARAGE PAD

NO.	REVISIONS	DATE	BY

**GENIVAR**  
200 TACHE AVENUE WINNIPEG, MANITOBA R2H 1A7  
PH: (204)-233-2113 FAX: (204)-233-2080

DESIGNED BY: R.H. CHECKED BY: S.M.  
DRAWN BY: R.H. APPROVED BY: I.McK.  
HOR. SCALE: 1:250  
VERT. SCALE: 1:10  
DATE: JUNE 2008

**I. G. MCKINNON**  
REGISTERED PROFESSIONAL ENGINEER  
CONSULTANT DRAWING NO. 063-052-03

**THE CITY OF WINNIPEG**  
PUBLIC WORKS DEPARTMENT

**2008 RECONSTRUCTION AND ALLEY RENEWAL**  
OAK / ELM LANE  
LANE PAVEMENT  
FROM MATCHLINE AT 2+20.00  
TO MATCHLINE AT 3+60.00

**APEGM**  
Certificate of Authorization  
Civil/Consultants Limited Partnership  
No. 458 Expiry April 30, 2009

CITY DRAWING NO.  
SHEET 2 OF 3  
470-2008