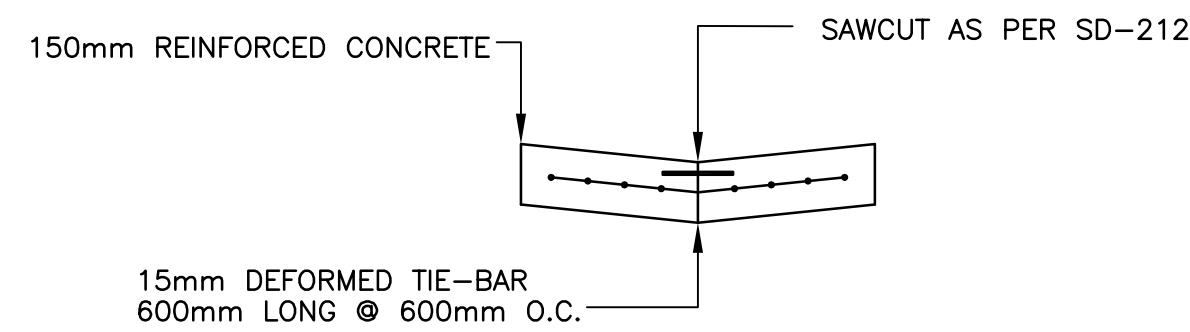


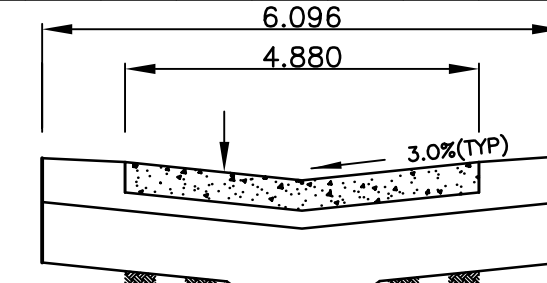
NOTES:

1. ISOLATE EXISTING HYDRO POLES AS DIRECTED BY CONTRACT ADMINISTRATOR
2. RENEW EXISTING APPROACHES AS DIRECTED BY CONTRACT ADMINISTRATOR
3. EXTEND SUBDRAINS AS DIRECTED BY CONTRACT ADMINISTRATOR
4. ADDITIONAL EXCAVATION AND INSTALLATION OF SUBGRADE GEGRID TO BE DETERMINED BY CONTRACT ADMINISTRATOR

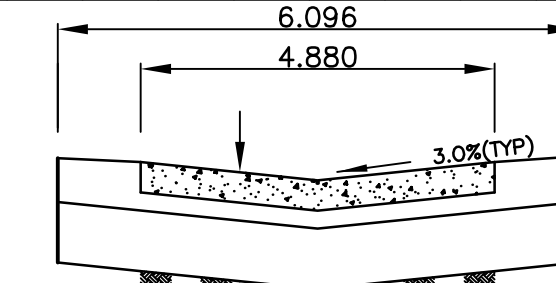


TYPICAL PAVEMENT CROSS SECTION
N.T.S.

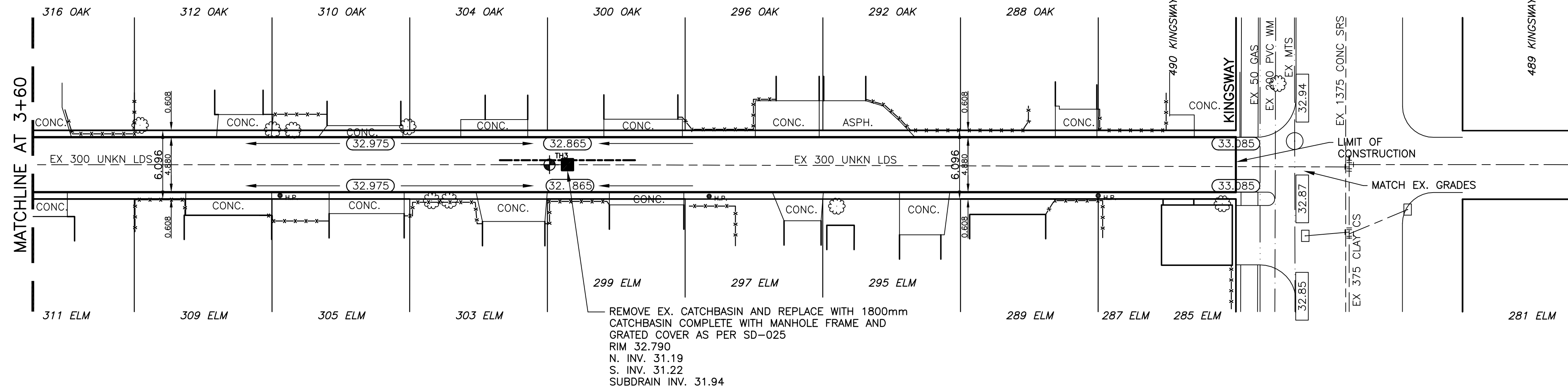
CHAINAGE ALONG CENTER OF ROW



TYPICAL LANE CROSS SECTION WITH SUBDRAIN
N.T.S.



LANE CROSS SECTION
N.T.S.



BENCHMARK:
S.E. COR. OF GROSVENOR AVE. & LANE E. OF ASH ST.
19mm DIA. x 6.1m I.B. IN VALVE BOX, 2.0m E. OF E.L. OF LANE & 1.0m S. OF S.L. OF GROSVENOR AVE.

METRIC
WHOLE NUMBERS INDICATE MILLIMETRES
DECIMALIZED NUMBERS INDICATE METRES

INSTALL PVC SUBDRAINS BETWEEN
STA. 4+01.50 AND 4+13.50

	WATERMAIN			HYDRO			CENTER LINE
	HYDRANT			M.T.S.			NORTH GUTTER LINE
	VALVE			CONCRETE			SOUTH GUTTER LINE
	LAND DRAINAGE SEWER			ASPHALT			WATERMAIN
	WASTE WATER SEWER			PROPERTY LINE			VALVE
	MANHOLE			SURVEY BAR			LAND DRAINAGE SEWER
	CATCH BASIN			CURB STOP			WASTE WATER SEWER
	CURB INLET			C.B. LEAD			JUNCTIONS
	TRAFFIC SIGNAL			SIDEWALK			TESTHOLE
	STEAM HT.			SIDEWALK RAMP			ASPH./CONC. PAD
	GAS			ELEVATIONS			GARAGE PAD
	EXISTING			LEGEND - PLAN			LEGEND - PROFILE
	PROPOSED			LEGEND - PLAN			LEGEND - PROFILE

LOCATION APPROVED

SUPV. U/G STRUCTURES COMMITTEE DATE
NOTE:
LOCATION OF UNDERGROUND STRUCTURES AS SHOWN ARE BASED ON THE BEST INFORMATION AVAILABLE BUT NO GUARANTEE IS GIVEN THAT ALL EXISTING UTILITIES ARE SHOWN OR THAT THE GIVEN LOCATIONS ARE EXACT. CONFIRMATION OF EXISTENCE AND EXACT LOCATION OF ALL UTILITIES MUST BE OBTAINED FROM THE INDIVIDUAL UTILITIES BEFORE PROCEEDING WITH CONSTRUCTION.

B.M. ELEV.	CWM: 51-030
	232.751
NO.	REVISIONS
DATE	BY

GENIVAR
200 TACHE AVENUE WINNIPEG, MANITOBA R2H 1A7
PH: (204)-233-2113 FAX: (204)-233-2080

DESIGNED BY	R.H.	CHECKED BY	S.M.
DRAWN BY	R.H.	APPROVED BY	I.McK.
HOR. SCALE:	1:250	RELEASED FOR CONSTRUCTION	ORIGINALLY SIGNED BY
VERT. SCALE:	1:10	DATE	JUNE 2008

ENGINEERS SEAL
PROVINCE OF MANITOBA
I. G. MCKINNON
REGISTERED PROFESSIONAL ENGINEER
CONSULTANT DRAWING NO.
063-052-04

THE CITY OF WINNIPEG
PUBLIC WORKS DEPARTMENT

2008 RECONSTRUCTION AND ALLEY RENEWAL
OAK / ELM LANE
LANE PAVEMENT
FROM MATCHLINE AT 3+60
TO KINGSWAY

CITY DRAWING NO.
SHEET 3 OF 3
470-2008

