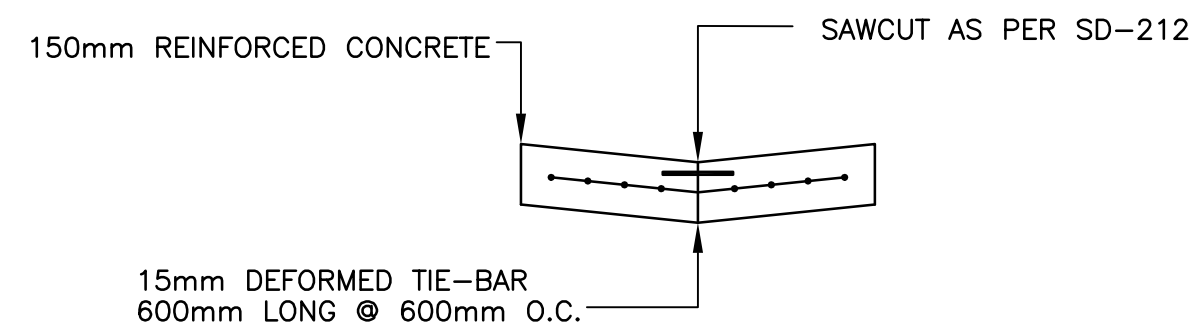
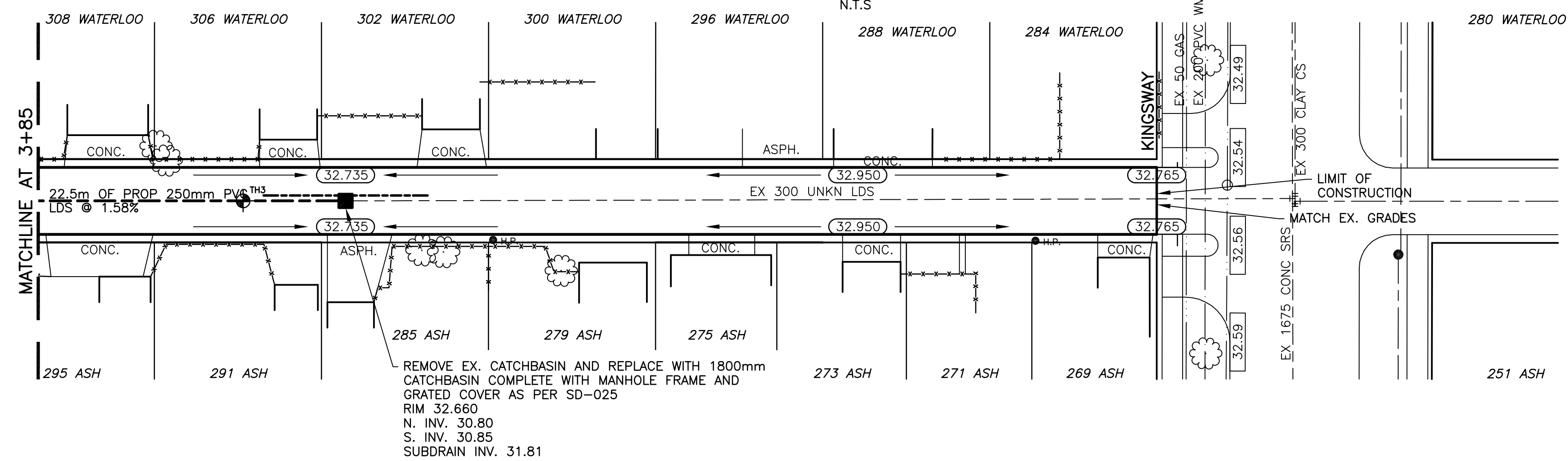
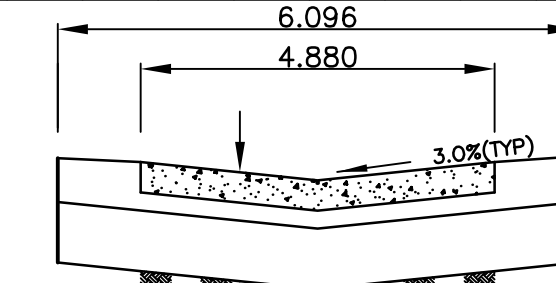
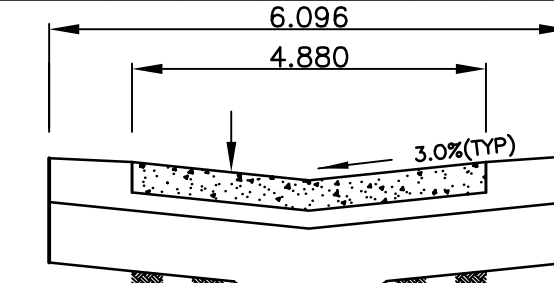


**NOTES:**

1. ISOLATE EXISTING HYDRO POLES AS DIRECTED BY CONTRACT ADMINISTRATOR
2. RENEW EXISTING APPROACHES AS DIRECTED BY CONTRACT ADMINISTRATOR
3. EXTEND SUBDRAINS AS DIRECTED BY CONTRACT ADMINISTRATOR
4. ADDITIONAL EXCAVATION AND INSTALLATION OF SUBGRADE GEOTEXTILE TO BE DETERMINED BY CONTRACT ADMINISTRATOR



**CHAINAGE ALONG CENTER OF ROW**



INSTALL PVC SUBDRAIN BETWEEN STA. 4+01.50 AND 4+13.50

**METRIC**  
WHOLE NUMBERS INDICATE MILLIMETRES  
DECIMALIZED NUMBERS INDICATE METRES

**BENCHMARK:**  
S.E. COR. OF GROSVENOR AVE. & LANE E. OF ASH ST.  
119mm DIA. x 6.1m I.B. IN VALVE BOX, 2.0m E. OF E.L. OF LANE & 1.0m S. OF S.L. OF GROSVENOR AVE.

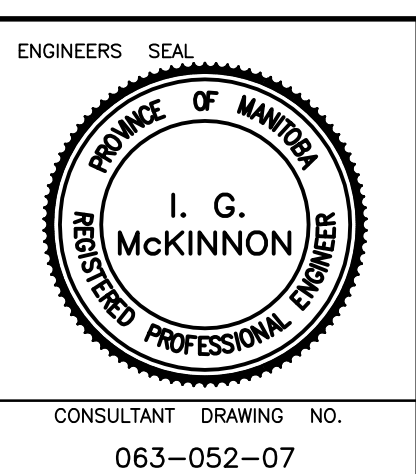


---	WATERMAIN	---	HYDRO	---	CENTER LINE	---	LOCATION APPROVED
⊕	HYDRANT	+	M.T.S.	---	NORTH GUTTER LINE	---	SUPV. U/G STRUCTURES
⊕	VALVE	⊕	CONCRETE	---	SOUTH GUTTER LINE	---	COMMITTEE
---	LAND DRAINAGE SEWER	---	ASPHALT	---	WATERMAIN	---	DATE
---	WASTE WATER SEWER	---	PROPERTY LINE	---	VALVE	---	NOTE:
○	MANHOLE	●	SURVEY BAR	---	LAND DRAINAGE SEWER	---	LOCATION OF UNDERGROUND STRUCTURES AS SHOWN ARE BASED ON THE BEST INFORMATION AVAILABLE BUT NO GUARANTEE IS GIVEN THAT ALL EXISTING UTILITIES ARE SHOWN OR THAT THE GIVEN LOCATIONS ARE EXACT. CONFIRMATION OF EXISTENCE AND EXACT LOCATION OF ALL SERVICES MUST BE OBTAINED FROM THE INDIVIDUAL UTILITIES BEFORE PROCEEDING WITH CONSTRUCTION.
□	CATCH BASIN	⊕	CURB STOP	---	WASTE WATER SEWER	---	
△	CURB INLET	■	C.B. LEAD	---	JUNCTIONS	---	
---	TRAFFIC SIGNAL	---	SIDEWALK	---	TESTHOLE	---	
---	STEAM HT.	---	SIDEWALK RAMP	---	ASPH./CONC. PAD	---	
---	GAS	---	ELEVATIONS	---	GARAGE PAD	---	
---	EXISTING	---	PROPOSED	---	EXISTING	---	
---	LEGEND - PLAN	---	PROPOSED	---	LEGEND - PROFILE	---	

B.M. ELEV.	CWBM: 51-030	232.751
NO.	REVISIONS	DATE BY

**GENIVAR**  
200 TACHE AVENUE WINNIPEG, MANITOBA R2H 1A7  
PH: (204)-233-2113 FAX: (204)-233-2080

DESIGNED BY: R.H. CHECKED BY: S.M.  
DRAWN BY: R.H. APPROVED BY: I.McK  
HOR. SCALE: 1:250  
VERT. SCALE: 1:10  
DATE: JUNE 2008



**THE CITY OF WINNIPEG**  
PUBLIC WORKS DEPARTMENT

**2008 RECONSTRUCTION AND ALLEY RENEWAL**  
WATERLOO / ASH LANE  
LANE PAVEMENT  
FROM MATCHLINE AT 3+85  
TO KINGSWAY

CITY DRAWING NO. SHEET 3 OF 3  
470-2008