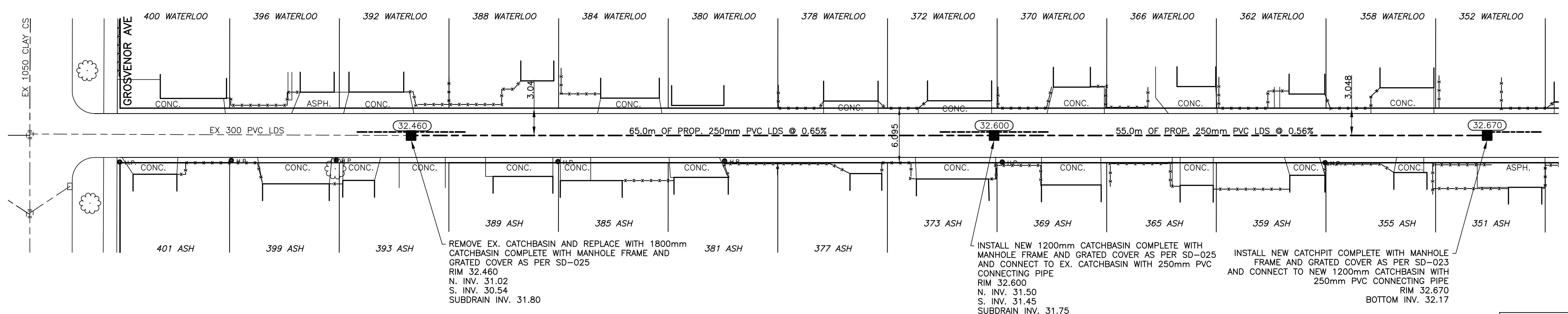
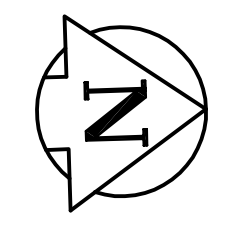


CHAINAGE ALONG CENTER OF ROW



BENCHMARK:  
S.E. COR. OF GROSVENOR AVE. & LANE E. OF ASH ST.  
119mm DIA. x 6.1m I.B. IN VALVE BOX, 2.0m E. OF E.L. OF LANE & 1.0m S. OF S.L. OF GROSVENOR AVE.

INSTALL PVC SUBDRAINS BETWEEN  
STA. 1+26.50 AND 1+38.50 AND  
STA. 1+91.50 AND 2+03.50 AND  
STA. 2+52.50 AND 2+58.50

METRIC  
WHOLE NUMBERS INDICATE MILLIMETRES  
DECIMALIZED NUMBERS INDICATE METRES

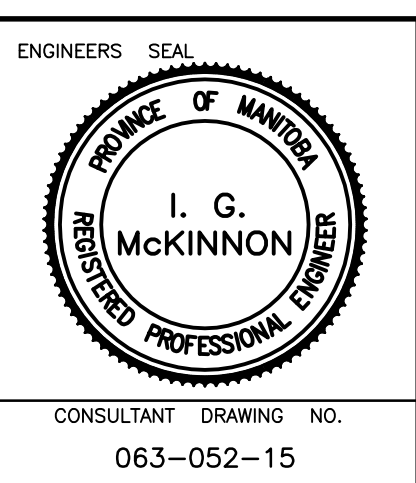


---	WATERMAIN	---	HYDRO	---	CENTER LINE	---	LOCATION APPROVED
+	HYDRANT	+	M.T.S.	---	NORTH GUTTER LINE	---	SUPV. U/G STRUCTURES
+	VALVE	+	CONCRETE	---	SOUTH GUTTER LINE	---	DATE
---	LAND DRAINAGE SEWER	---	ASPHALT	---	WATERMAIN	---	NOTE:
---	WASTE WATER SEWER	---	PROPERTY LINE	---	VALVE	---	LOCATION OF UNDERGROUND STRUCTURES AS SHOWN ARE BASED ON THE BEST INFORMATION AVAILABLE BUT NO GUARANTEE IS GIVEN THAT ALL EXISTING UTILITIES ARE SHOWN OR THAT THE GIVEN LOCATIONS ARE EXACT. CONFIRMATION OF EXISTENCE AND EXACT LOCATION OF ALL SERVICES MUST BE OBTAINED FROM THE INDIVIDUAL UTILITIES BEFORE PROCEEDING WITH CONSTRUCTION.
○	MANHOLE	○	SURVEY BAR	---	LAND DRAINAGE SEWER	---	
□	CATCH BASIN	□	CURB STOP	---	WASTE WATER SEWER	---	
△	CURB INLET	△	C.B. LEAD	---	JUNCTIONS	---	
---	TRAFFIC SIGNAL	---	SIDEWALK	---	CULVERT	---	
---	STEAM HT.	---	SIDEWALK RAMP	---	ASPH./CONC. PAD	---	
---	GAS	---	ELEVATIONS	---	GARAGE PAD	---	
---	EXISTING	---	PROPOSED	---	EXISTING	---	PROPOSED

B.M. ELEV.	CWBM: 51-030	232.751
NO.	REVISIONS	DATE BY

**GENIVAR**  
200 TACHE AVENUE WINNIPEG, MANITOBA R2H 1A7  
PH: (204)-233-2113 FAX: (204)-233-2080

DESIGNED BY: R.H. CHECKED BY: S.M.  
DRAWN BY: R.H. APPROVED BY: I.McK  
HOR. SCALE: 1:250  
VERT. SCALE: 1:50  
DATE: JUNE 2008



**THE CITY OF WINNIPEG**  
WATER AND WASTE DEPARTMENT

2008 RECONSTRUCTION AND ALLEY RENEWAL  
WATERLOO / ASH LANE  
LAND DRAINAGE SEWER  
FROM EX. 1050 CLAY C.S. AT 0+89.9  
TO CATCHPIT AT 2+52.50

CITY DRAWING NO. 470-2008  
SHEET 1 OF 2