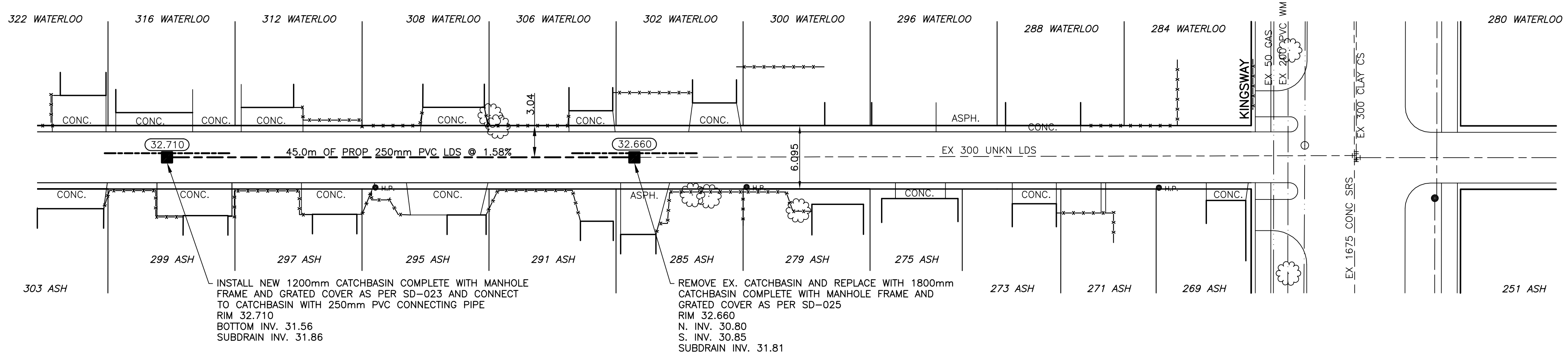
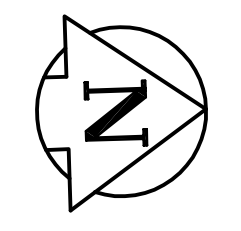


CHAINAGE ALONG CENTER OF ROW



BENCHMARK:
S.E. COR. OF GROSEVENOR AVE. & LANE E. OF ASH ST.
119mm DIA. x 6.1m I.B. IN VALVE BOX, 2.0m E. OF E.L.
OF LANE & 1.0m S. OF S.L. OF GROSEVENOR AVE.

INSTALL PVC SUBDRAIN BETWEEN
STA. 3+56.50 AND 3+68.50 AND
STA. 4+01.50 AND 4+13.50

METRIC
WHOLE NUMBERS INDICATE MILLIMETRES
DECIMALIZED NUMBERS INDICATE METRES

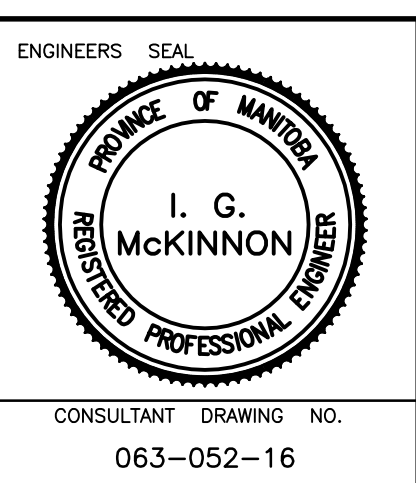


---	WATERMAIN	---	HYDRO	---	CENTER LINE	---	LOCATION APPROVED
⊕	HYDRANT	⊕	M.T.S.	---	NORTH GUTTER LINE	---	DESIGNED BY R.H.
⊕	VALVE	⊕	CONCRETE	---	SOUTH GUTTER LINE	---	CHECKED BY S.M.
---	LAND DRAINAGE SEWER	---	ASPHALT	---	WATERMAIN	---	DRAWN BY R.H.
---	WASTE WATER SEWER	---	PROPERTY LINE	---	VALVE	---	APPROVED BY I.McK
○	MANHOLE	○	SURVEY BAR	---	LAND DRAINAGE SEWER	---	HOR. SCALE: 1:250
□	CATCH BASIN	□	CURB STOP	---	WASTE WATER SEWER	---	VERT. SCALE: 1:50
△	CURB INLET	△	C.B. LEAD	---	JUNCTIONS	---	RELEASED FOR CONSTRUCTION
---	TRAFFIC SIGNAL	---	SIDEWALK	---	CULVERT	---	ORIGINALLY SIGNED BY
---	STEAM HT.	---	SIDEWALK RAMP	---	ASPH./CONC. PAD	---	DATE JUNE 2008
---	GAS	---	ELEVATIONS	---	GARAGE PAD	---	DATE
---	EXISTING	---	LEGEND - PLAN	---	LEGEND - PROFILE	---	NO. REVISIONS
---	PROPOSED	---	PROPOSED	---	PROPOSED	---	DATE BY

B.M. ELEV.	CWBM: 51-030	232.751
NO.	REVISIONS	DATE BY

GENIVAR
200 TACHE AVENUE WINNIPEG, MANITOBA R2H 1A7
PH: (204)-233-2113 FAX: (204)-233-2080

DESIGNED BY R.H. CHECKED BY S.M.
DRAWN BY R.H. APPROVED BY I.McK
HOR. SCALE: 1:250
VERT. SCALE: 1:50
DATE JUNE 2008



THE CITY OF WINNIPEG
WATER AND WASTE DEPARTMENT

2008 RECONSTRUCTION AND ALLEY RENEWAL
WATERLOO / ASH LANE
LAND DRAINAGE SEWER
FROM CATCHBASIN AT 3+62.50
TO EX. 300 CLAY C.S AT 4+77.0

CITY DRAWING NO.
SHEET 2 OF 2
470-2008