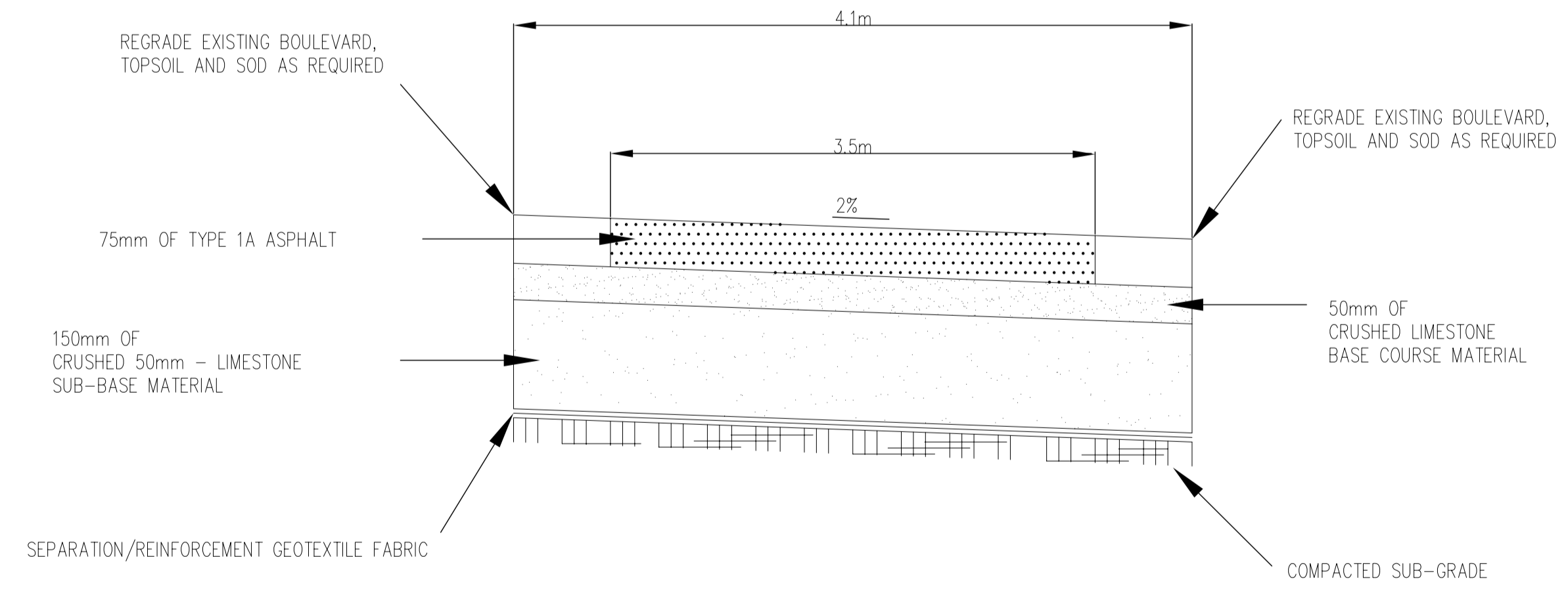
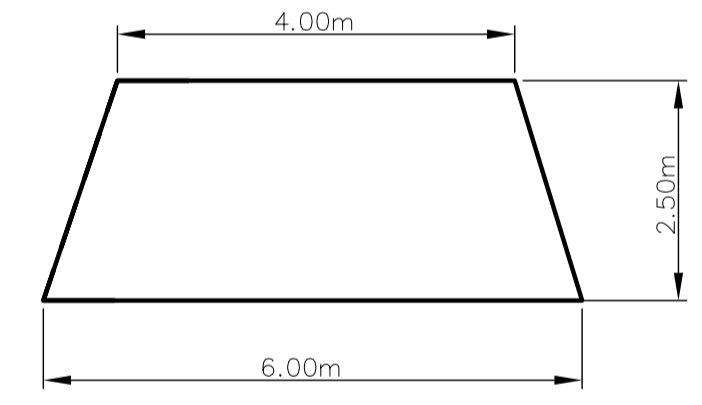


PLAN VIEW TYPICAL BENCH NODE

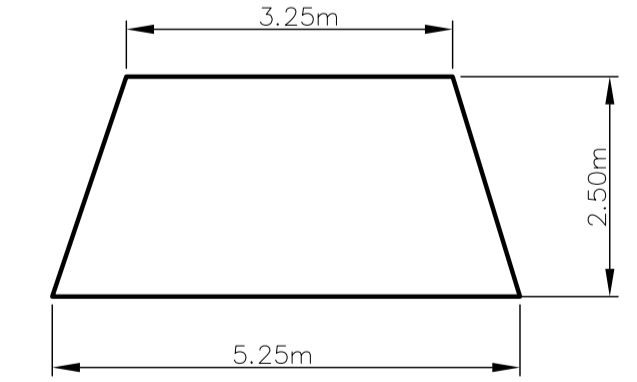
TYPICAL CROSS SECTION OF PROPOSED ASPHALT PEDESTRIAN/CYCLE PATH AND BENCH NODES (EXCEPT AS NOTED) N.T.S.



"A" BENCH NODE DETAIL N.T.S.



"B" BENCH NODE DETAIL N.T.S.



NOTE: BENCH SUPPLIED AND INSTALLED BY OTHERS

- CONSTRUCTION NOTES**
- 1) CURB REPLACEMENT AS DIRECTED BY THE CONTRACT ADMINISTRATOR
 - 2) ALL STREET RADIUS CURB UNDER 15M RADIUS SHALL BE REPLACED AS MODIFIED OR AS DIRECTED BY THE CONTRACT ADMINISTRATOR
 - 3) PAVEMENT REPAIRS SHOWN ARE ONLY A REPRESENTATIVE SAMPLE OF THE TENDERED QUANTITIES
 - 4) ASPHALT TIE-INS ON APPROACHES TO BE DETERMINED IN THE FIELD BY THE CONTRACT ADMINISTRATOR.
 - 5) ALL BULLNOSES TO HAVE SLOPED FACE.

WARNING

IF POWER EQUIPMENT OR EXPLOSIVES ARE TO BE USED FOR EXCAVATION ON THIS PROJECT THE CONTRACTOR MUST:

- 1) OBTAIN CLEARANCE FROM THE GAS UTILITY PRIOR TO EXCAVATION.
- 2) TAKE PRECAUTION TO AVOID DAMAGE TO GAS UTILITY INSTALLATIONS.

SEE PROVINCIAL REGULATION 210/72 FOR DETAILS

METRIC
WHOLE NUMBERS INDICATE MILLIMETRES
DECIMALIZED NUMBERS INDICATE METRES

BID OPPORTUNITY 493-2008

150 mm WM	WATERMAIN	150 mm WM	HYDRO	GUY WIRE	LOCATION APPROVED
⊕	HYDRANT	◆	SEWER	O.L.S.	UNDERGROUND STRUCTURES
⊗	VALVE	⊕	GAS	BILLBOARD SIGN	
—○—○—	CHAIN LINK FENCE	—	CONCRETE	BUSH	
—□—□—	WOOD BOLLARD	—	CURB RENEWAL	PEDESTRIAN/CYCLE FACILITY	
—	CONCRETE SIDEWALK	—	ELEVATIONS		
○	MANHOLE	—	PROPERTY LINE		
□	CATCH BASIN	—	SURVEY BAR		
△	CURB INLET	—	GEODETTIC BENCH MARK		
—○—	HYDRO POLE	—	RAMP CURB		
—○—	TRAFFIC SIGNAL POLE	—	GUARD RAIL		
EXISTING	LEGEND - PLAN	PROPOSED	EXISTING	LEGEND - PLAN	PROPOSED

LOCATION APPROVED
UNDERGROUND STRUCTURES

DATE COMMITTEE

NOTE:
LOCATION OF UNDERGROUND STRUCTURES AS SHOWN ARE BASED ON THE BEST INFORMATION AVAILABLE, BUT NO GUARANTEE IS GIVEN THAT ALL EXISTING UTILITIES ARE SHOWN OR THAT THE GIVEN LOCATIONS ARE EXACT. CONFIRMATION OF EXISTENCE AND EXACT LOCATION OF ALL SERVICES MUST BE OBTAINED FROM THE INDIVIDUAL UTILITIES BEFORE PROCEEDING WITH CONSTRUCTION.

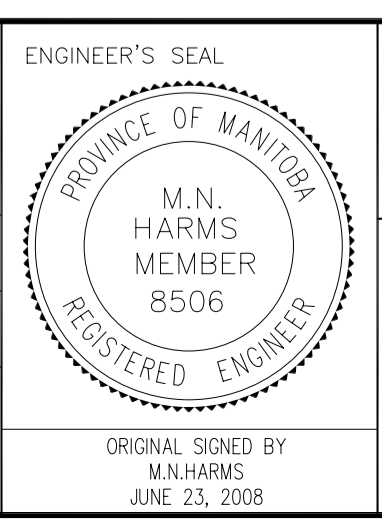
B.M. ELEV.	GBM 63-013	232.291
NO.	REVISIONS	DATE BY

TRANSPORTATION ENGINEERING DIVISION
TECHNOLOGY SERVICES BRANCH
106 - 1155 PACIFIC AVE

DESIGNED BY R.M./A.F. CHECKED BY B.K.
DRAWN BY R.M./A.F. APPROVED BY M.N.H.

HOR. SCALE: 1 : 500
VERTICAL: 1 : 5

DATE 2008/05/10



THE CITY OF WINNIPEG
PUBLIC WORKS DEPARTMENT

BISHOP GRANDIN GREENWAY
FROM RIVER ROAD TO GLEN MEADOW STREET
PEDESTRIAN CYCLE FACILITY AND ASSOCIATED WORKS
FROM STA. 1+00 TO STA. 4+50

CITY DRAWING NUMBER SE-08-28
SHEET 1 OF 5

1