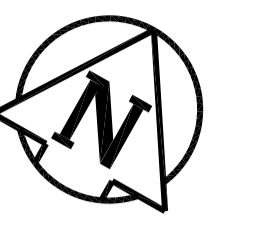


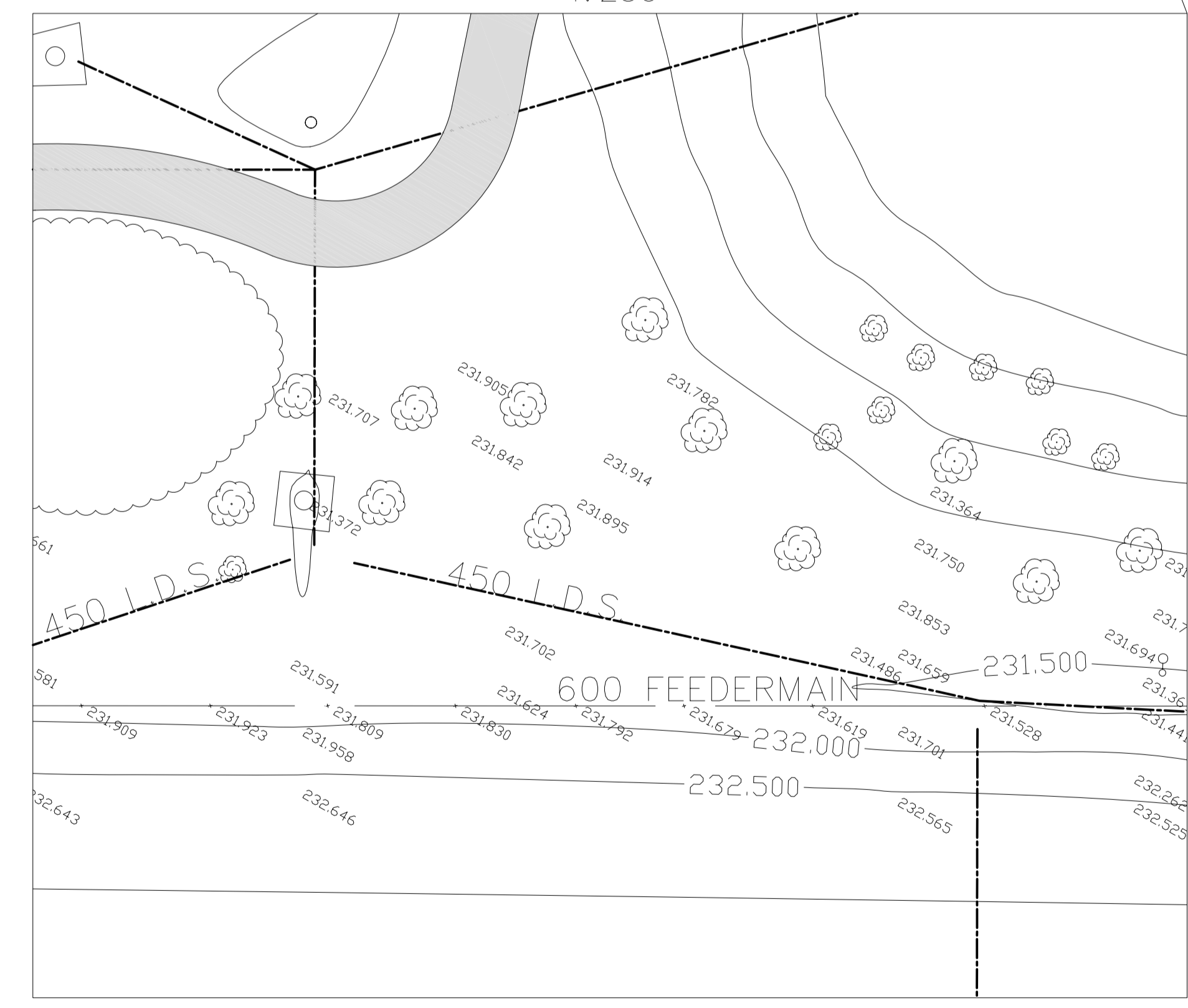
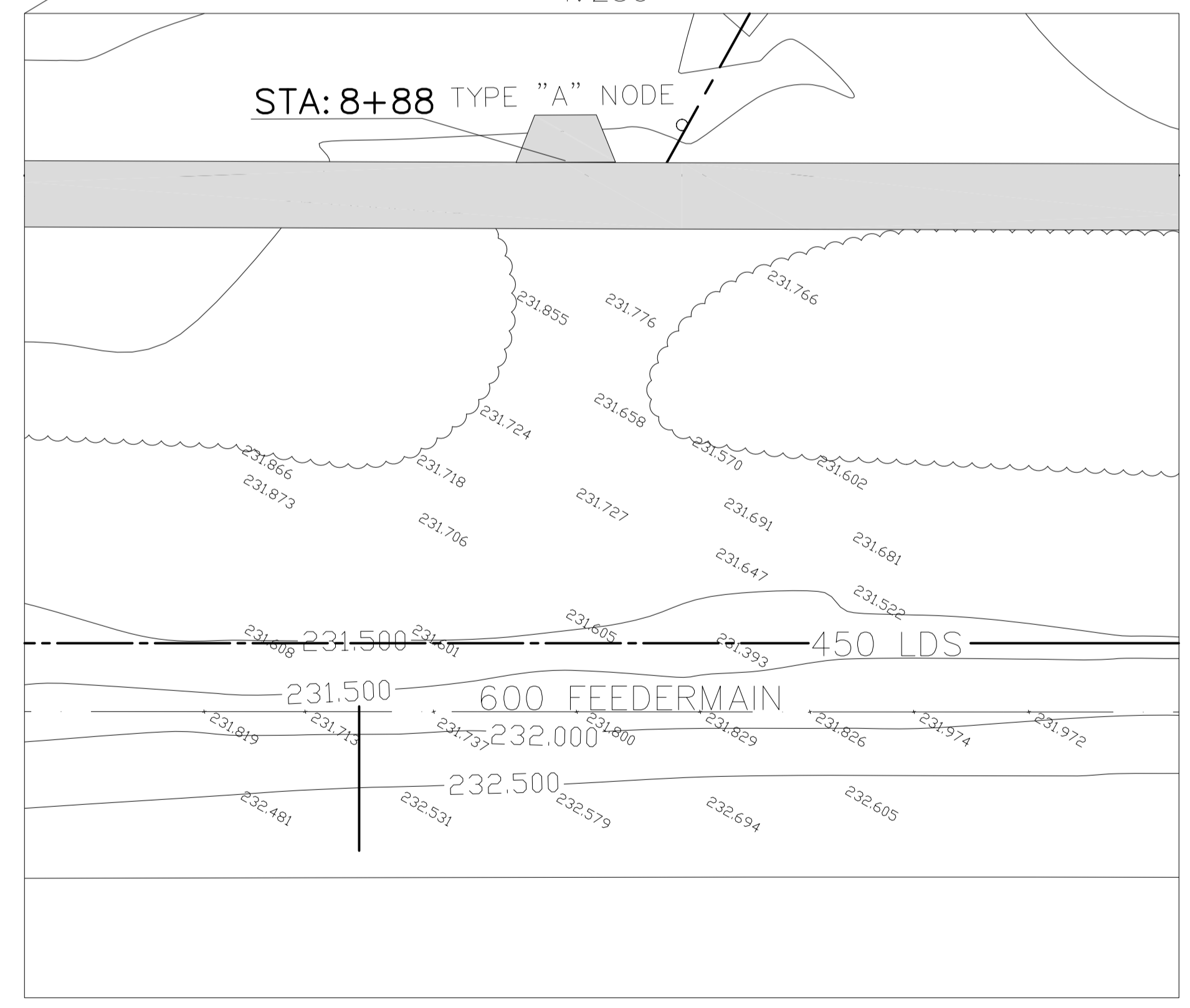
MATCHLINE STA 8+00

MATCHLINE STA 12+00



ACCESS ROAD FEEDERMAIN CROSSING: OPTION 3  
1: 250

ACCESS ROAD FEEDERMAIN CROSSING: OPTION 4  
1: 250



- CONSTRUCTION NOTES**
- 1) CURB REPLACEMENT AS DIRECTED BY THE CONTRACT ADMINISTRATOR
  - 2) ALL STREET RADIUS CURB UNDER 15M RADIUS SHALL BE REPLACED AS MODIFIED OR AS DIRECTED BY THE CONTRACT ADMINISTRATOR
  - 3) PAVEMENT REPAIRS SHOWN ARE ONLY A REPRESENTATIVE SAMPLE OF THE TENDERED QUANTITIES
  - 4) ASPHALT TIE-INS ON APPROACHES TO BE DETERMINED IN THE FIELD BY THE CONTRACT ADMINISTRATOR.
  - 5) ALL BULLNOSES TO HAVE SLOPED FACE.

**WARNING**

IF POWER EQUIPMENT OR EXPLOSIVES ARE TO BE USED FOR EXCAVATION ON THIS PROJECT THE CONTRACTOR MUST:

- 1) OBTAIN CLEARANCE FROM THE GAS UTILITY PRIOR TO EXCAVATION.
- 2) TAKE PRECAUTION TO AVOID DAMAGE TO GAS UTILITY INSTALLATIONS.

SEE PROVINCIAL REGULATION 210/72 FOR DETAILS

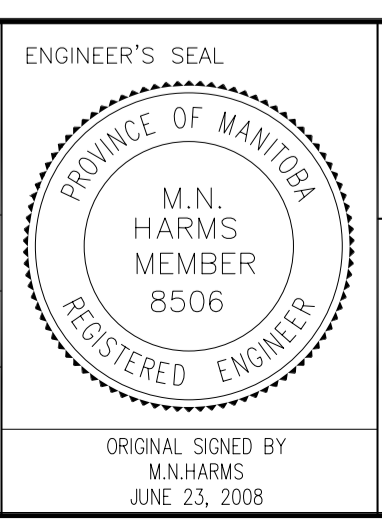
**METRIC**  
WHOLE NUMBERS INDICATE MILLIMETRES  
DECIMALIZED NUMBERS INDICATE METRES

**BID OPPORTUNITY 493-2008**

150 mm WM	WATERMAIN	150 mm WM	HYDRO	GUY WIRE	LOCATION APPROVED	B.M. ELEV.	GBM 63-013 232.291
⊕	HYDRANT VALVE	◆	SEWER GAS	O.L.S. BILLBOARD SIGN	UNDERGROUND STRUCTURES		
⊖	CHAIN LINK FENCE	⊕	CONCRETE CURB RENEWAL ELEVATIONS	BUSH	SUPR. U/G STRUCTURES DATE COMMITTEE		
⊖	WOOD BOLLARD	231.000	PROPERTY LINE	PEDESTRIAN/CYCLE FACILITY	NOTE:		
⊖	CONCRETE SIDEWALK	231.000	SURVEY BAR		LOCATION OF UNDERGROUND STRUCTURES AS SHOWN ARE BASED ON THE BEST INFORMATION AVAILABLE, BUT NO GUARANTEE IS GIVEN THAT ALL EXISTING UTILITIES ARE SHOWN OR THAT THE GIVEN LOCATIONS ARE EXACT. CONFIRMATION OF EXISTENCE AND EXACT LOCATION OF ALL SERVICES MUST BE OBTAINED FROM THE INDIVIDUAL UTILITIES BEFORE PROCEEDING WITH CONSTRUCTION.		
○	MANHOLE	●	GEODETIC BENCH MARK				
□	CATCH BASIN	▲	RAMP CURB				
△	CURB INLET	▲	GUARD RAIL				
○	HYDRO POLE						
○	TRAFFIC SIGNAL POLE						
EXISTING	LEGEND - PLAN	PROPOSED	EXISTING	LEGEND - PLAN	PROPOSED	EXISTING	LEGEND - PLAN

DESIGNED BY	R.M./A.F.	CHECKED BY	B.K.
DRAWN BY	R.M./A.F.	APPROVED BY	M.N.H.
HOR. SCALE:	1 : 500		
VERTICAL:	1 : 5		
DATE	2008/05/10		
NO.	REVISIONS	DATE	BY

**TRANSPORTATION ENGINEERING DIVISION  
TECHNOLOGY SERVICES BRANCH  
106 - 1155 PACIFIC AVE**



**THE CITY OF WINNIPEG  
PUBLIC WORKS DEPARTMENT**

**BISHOP GRANDIN GREENWAY**  
FROM RIVER ROAD TO GLEN MEADOW STREET  
PEDESTRIAN CYCLE FACILITY AND ASSOCIATED WORKS  
FROM STA. 8+00 TO STA. 12+00

CITY DRAWING NUMBER SE-08-30  
SHEET 3 OF 5

**3**