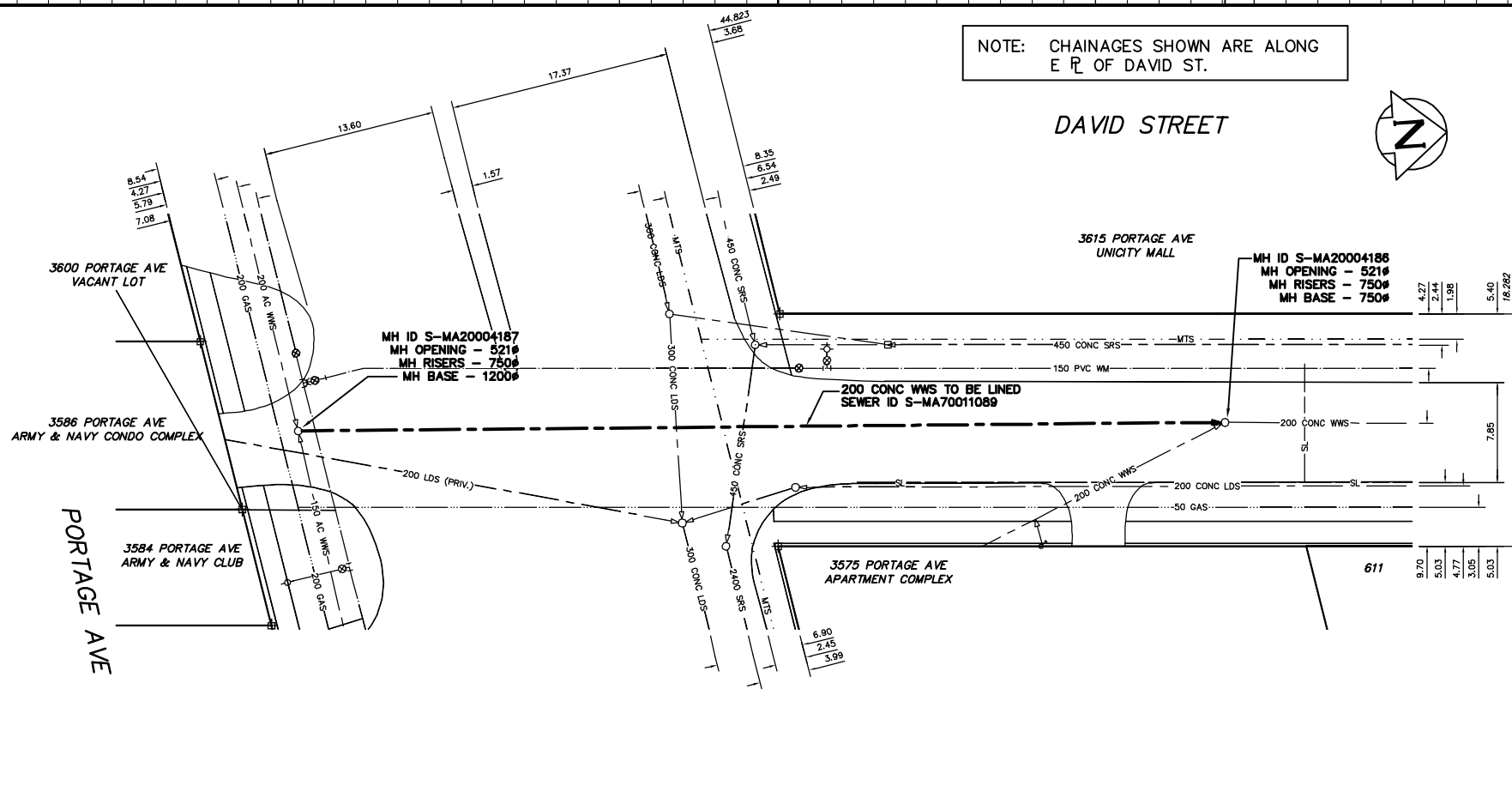


NOTE: CHAINAGES SHOWN ARE ALONG  
E L OF DAVID ST.

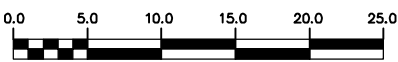


SEWER SERVICE INFORMATION			
ADDRESS	SIZE	R DIST	JUNCTION TIE
611 DAVID ST		6.98 N OF SL	
RESIDENTIAL		19.12 N 1ST MH N PORTAGE	
3575 PORTAGE AVE		20.77 S OF NL	
COMMERCIAL		-	
3584 PORTAGE AVE		-	
COMMERCIAL		-	
3600 PORTAGE AVE		8.50 W OF EL	
COMMERCIAL		15.11 W MH AT SR PORTAGE	
3615 PORTAGE AVE		-	
COMMERCIAL		-	

SEWER JUNCTION INFORMATION FROM SEWER VIDEO INSPECTION SEWER ID S-MA70011089	
DISTANCE FROM MH ID S-MH200004871	
NO JUNCTIONS	

METRIC  
WHOLE NUMBERS INDICATE MILLIMETRES  
DECIMALIZED NUMBERS INDICATE METRES

**WARNING**  
IF POWER EQUIPMENT OR EXPLOSIVES ARE TO BE USED FOR EXCAVATION ON THIS PROJECT THE CONTRACTOR MUST:  
1) NOTIFY THE GAS COMPANY OF THE PROPOSED LOCATION OF EXCAVATION.  
2) TAKE PRECAUTION TO AVOID DAMAGE TO GAS COMPANY INSTALLATIONS.  
SEE PROVINCIAL REGULATION 210/72 FOR DETAILS



200 WM	WATERMAIN	200 WM	SL, HYDRO	150 WM	WATERMAIN	150 WM		
+	HYDRANT	+	MTS	+	HYDRANT	+		
o	VALVE	o	TRAFFIC SIGNALS	o	VALVE	o		
525 LDS	LAND DRAINAGE SEWER	525 LDS	GAS	50 GAS	300 LDS	LAND DRAINAGE SEWER		
375 WWS	WASTEWATER SEWER	375 WWS	SURVEY BAR	250 WWS	250 WWS	WASTEWATER SEWER		
o	MANHOLE	o	FENCE	-x-	o	PROFILE		
o	CATCH BASIN	o	POLE - HYDRO, MTS	o	o	GROUND ABOVE PIPE		
v	CURB INLET	v	CURB STOP	v	v	o DITCH (NORTH & WEST)		
o	JUNCTIONS	o	GUY ANCHOR	o	o	o DITCH (SOUTH & EAST)		
o	CULVERT	o	LIGHT STANDARD	o	o	o GUTTER (NORTH & WEST)		
o	ANODE	o	TREE	o	o	o GUTTER (SOUTH & EAST)		
EXISTING	LEGEND-PLAN	PROPOSED	EXISTING	LEGEND-PLAN	PROPOSED	EXISTING	LEGEND-PROFILE	PROPOSED

LOCATION APPROVED  
UNDERGROUND STRUCTURES

SUPV. U/G STRUCTURES COMMITTEE DATE

NOTE:  
LOCATION OF UNDERGROUND STRUCTURES AS SHOWN ARE BASED ON THE BEST INFORMATION AVAILABLE BUT NO GUARANTEE IS GIVEN THAT ALL EXISTING UTILITIES ARE SHOWN OR THAT THE GIVEN LOCATIONS ARE EXACT. CONFIRMATION OF EXISTENCE AND EXACT LOCATION OF ALL SERVICES MUST BE OBTAINED FROM THE INDIVIDUAL UTILITIES BEFORE PROCEEDING WITH CONSTRUCTION.

B.M. ELEV.	FIELD BOOK #:
POSTED TO LBS	
NO.	REVISIONS

CITY OF WINNIPEG  
WATER AND WASTE  
ENGINEERING DIVISION

DESIGNED BY: DB/SC  
CHECKED BY: SC

DRAWN BY: CJH  
APPROVED BY: KZ

HOR. SCALE: 1:250  
VERTICAL: 1:50

RELEASED FOR CONSTRUCTION

DATE: 2008 07 08

ENGINEER'S SEAL

ORIGINAL SIGNED  
BY K.R.  
ZUREK  
08/07/08

BID OPPORTUNITY: 499-2008  
FILENAME: 8600.dwg  
PLOT DATE: 2008 07 08

THE CITY OF WINNIPEG  
WATER AND WASTE DEPARTMENT

2008 SEWER RENEWALS  
BY CIPP LINING  
DAVID STREET  
MH AT S R PORTAGE AVENUE TO  
1ST MH N OF PORTAGE AVENUE

SHEET 2 OF 24  
CITY DRAWING NUMBER  
8600