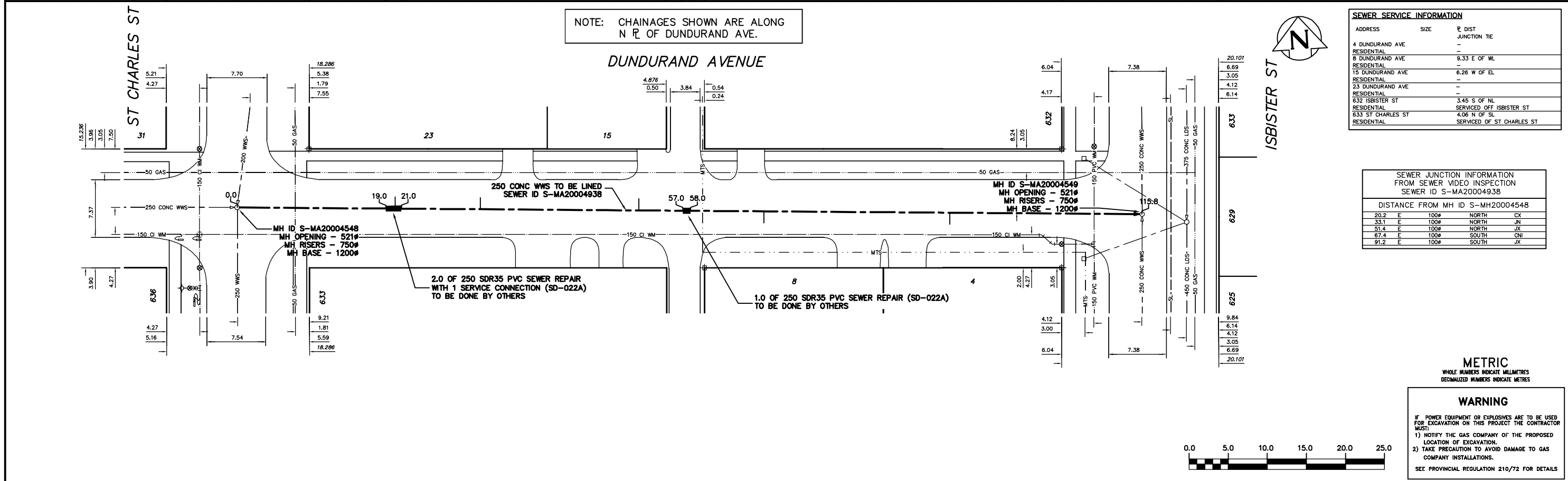


NOTE: CHAINAGES SHOWN ARE ALONG N R OF DUNDURAND AVE.

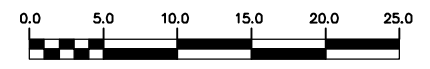


SEWER SERVICE INFORMATION		
ADDRESS	SIZE	R. DIST. JUNCTION TIE
4 DUNDURAND AVE	RESIDENTIAL	-
8 DUNDURAND AVE	RESIDENTIAL	9.33 E OF WL
15 DUNDURAND AVE	RESIDENTIAL	6.26 W OF EL
23 DUNDURAND AVE	RESIDENTIAL	-
632 ISBISTER ST	RESIDENTIAL	3.45 S OF NL
633 ST CHARLES ST	RESIDENTIAL	SERVICED OFF ISBISTER ST
633 ST CHARLES ST	RESIDENTIAL	4.06 N OF SL
633 ST CHARLES ST	RESIDENTIAL	SERVICED OFF ST CHARLES ST

SEWER JUNCTION INFORMATION FROM SEWER VIDEO INSPECTION SEWER ID S-MA20004938			
DISTANCE FROM MH ID S-MH20004548			
20.2	E	100#	NORTH CX
33.1	E	100#	NORTH JN
51.4	E	100#	NORTH JX
67.4	E	100#	SOUTH CNL
91.2	E	100#	SOUTH JX

METRIC
WHOLE NUMBERS INDICATE MILLIMETRES
DECIMALIZED NUMBERS INDICATE METRES

WARNING
IF POWER EQUIPMENT OR EMPLOYEES ARE TO BE USED FOR EXCAVATION ON THIS PROJECT THE CONTRACTOR MUST:
1) NOTIFY THE GAS COMPANY OF THE PROPOSED LOCATION OF EXCAVATION.
2) TAKE PRECAUTION TO AVOID DAMAGE TO GAS COMPANY INSTALLATIONS.
SEE PROVINCIAL REGULATION 210/72 FOR DETAILS



200 WM	WATERMAIN	200 WM	SL, HYDRO	150 WM	WATERMAIN	150 WM
⊕	HYDRANT	⊕	MTS	+	HYDRANT	+
⊙	VALVE	⊙	TRAFFIC SIGNALS	⊕	VALVE	⊕
525 LDS	LAND DRAINAGE SEWER	525 LDS	GAS	50 GAS	300 LDS	LAND DRAINAGE SEWER
375 WWS	WASTEWATER SEWER	375 WWS	SURVEY BAR	250 WWS	250 WWS	WASTEWATER SEWER
○	MANHOLE	●	FENCE	⊖	⊖	PROFILE
□	CATCH BASIN	■	POLE - HYDRO, MTS	⊖	⊖	GROUND ABOVE PIPE
▽	CURB INLET	▽	CURB STOP	⊖	⊖	⊖
⊕	JUNCTIONS	⊕	GUY ANCHOR	⊖	⊖	⊖
⊖	CULVERT	⊖	LIGHT STANDARD	⊖	⊖	⊖
⊖	ANODE	⊖	TREE	⊖	⊖	⊖
EXISTING	LEGEND-PLAN	PROPOSED	EXISTING	LEGEND-PLAN	PROPOSED	EXISTING
⊖	LEGEND-PROFILE	PROPOSED	EXISTING	LEGEND-PROFILE	PROPOSED	EXISTING

LOCATION APPROVED UNDERGROUND STRUCTURES	
SUPV. U/G STRUCTURES COMMITTEE	DATE
NOTE: LOCATION OF UNDERGROUND STRUCTURES AS SHOWN ARE BASED ON THE BEST INFORMATION AVAILABLE BUT NO GUARANTEE IS GIVEN THAT ALL EXISTING UTILITIES ARE SHOWN OR THAT THE GIVEN LOCATIONS ARE EXACT. CONFIRMATION OF EXISTENCE AND EXACT LOCATION OF ALL SERVICES MUST BE OBTAINED FROM THE INDIVIDUAL UTILITIES BEFORE PROCEEDING WITH CONSTRUCTION.	

CITY OF WINNIPEG WATER AND WASTE ENGINEERING DIVISION	
DESIGNED BY: DB/SC	CHECKED BY: SC
DRAWN BY: C.J.H.	APPROVED BY: K.Z.
HOR. SCALE: 1:250	RELEASED FOR CONSTRUCTION
VERTICAL: 1:50	DATE: 2008 07 08

ENGINEER'S SEAL
ORIGINAL SIGNED BY K.R. ZUREK 08/07/08

THE CITY OF WINNIPEG WATER AND WASTE DEPARTMENT

2008 SEWER RENEWALS BY CIPP LINING
DUNDURAND AVENUE
MH AT ST CHARLES STREET TO MH AT ISBISTER STREET

SHEET 4 OF 24
CITY DRAWING NUMBER 8602