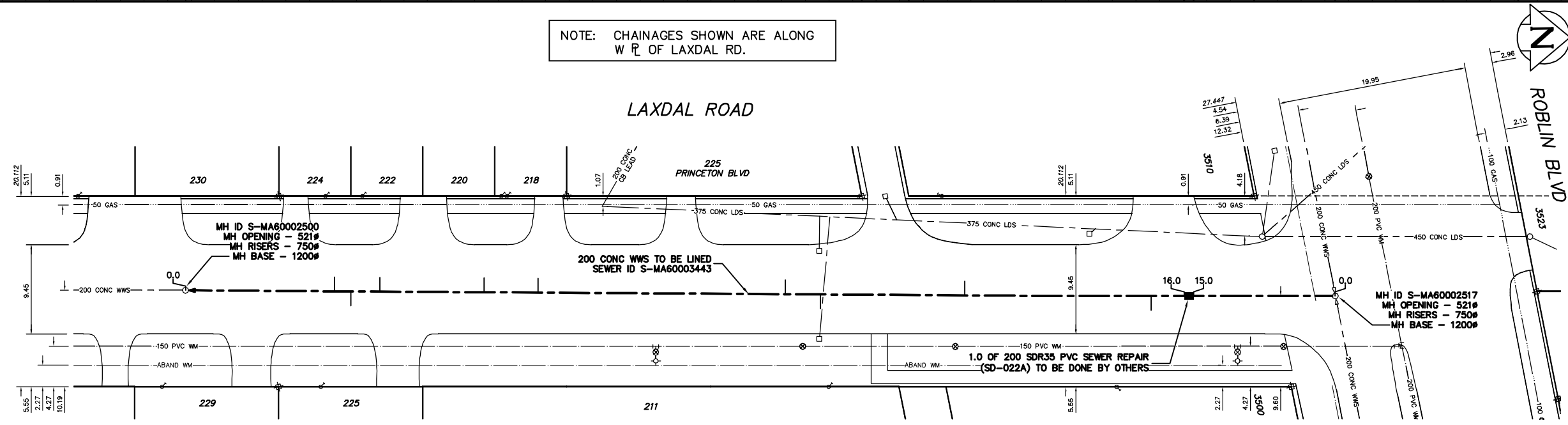
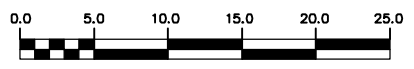


NOTE: CHAINAGES SHOWN ARE ALONG W P OF LAXDAL RD.



SEWER SERVICE INFORMATION			
ADDRESS	SIZE	R DIST	JUNCTION TIE
211 LAXDAL RD			
RESIDENTIAL			
218 LAXDAL RD			
RESIDENTIAL			
220 LAXDAL RD			
RESIDENTIAL			
222 LAXDAL RD			
RESIDENTIAL			
224 LAXDAL RD			
RESIDENTIAL			
225 LAXDAL RD			
RESIDENTIAL			
229 LAXDAL RD			
RESIDENTIAL			
230 LAXDAL RD			
RESIDENTIAL			
225 PRINCETON BV			
COMMERCIAL			
3500 ROBLIN BV			
COMMERCIAL			
3510 ROBLIN BV			
COMMERCIAL			

SEWER JUNCTION INFORMATION FROM SEWER VIDEO INSPECTION SEWER ID S-MA60003443			
DISTANCE FROM MH ID S-MH60002517			
19.5 S	150#	EAST	CX
39.2 S	150#	WEST	CX
54.5 S	150#	EAST	CNI
68.2 S	150#	WEST	CJI
84.4 S	150#	WEST	CX
90.1 S	150#	WEST	CNI
101.1 S	150#	WEST	CJI
104.2 S	150#	EAST	CX
105.9 S	150#	WEST	CJI



METRIC  
WHOLE NUMBERS INDICATE MILLIMETRES  
DECIMALIZED NUMBERS INDICATE METRES

**WARNING**  
IF POWER EQUIPMENT OR EMPLOYEES ARE TO BE USED FOR EXCAVATION ON THIS PROJECT THE CONTRACTOR MUST:  
1) NOTIFY THE GAS COMPANY OF THE PROPOSED LOCATION OF EXCAVATION.  
2) TAKE PRECAUTION TO AVOID DAMAGE TO GAS COMPANY INSTALLATIONS.  
SEE PROVINCIAL REGULATION 210/72 FOR DETAILS

200 WM	WATERMAIN	200 WM	SL, HYDRO	150 WM	WATERMAIN	150 WM
⊕	HYDRANT	⊕	MTS	⊕	HYDRANT	⊕
⊙	VALVE	⊙	TRAFFIC SIGNALS	⊙	VALVE	⊙
525 LDS	LAND DRAINAGE SEWER	525 LDS	GAS	50 GAS	300 LDS	LAND DRAINAGE SEWER
375 WWS	WASTEWATER SEWER	375 WWS	SURVEY BAR	250 WWS	250 WWS	WASTEWATER SEWER
○	MANHOLE	●	FENCE	⊕	⊕	PROFILE
□	CATCH BASIN	■	POLE - HYDRO, MTS	⊕	⊕	GROUND ABOVE PIPE
▽	CURB INLET	▽	CURB STOP	⊕	⊕	⊕ DITCH (NORTH & WEST)
⊕	JUNCTIONS	⊕	GUY ANCHOR	⊕	⊕	⊕ DITCH (SOUTH & EAST)
⊕	CULVERT	⊕	LIGHT STANDARD	⊕	⊕	⊕ GUTTER (NORTH & WEST)
⊕	ANODE	⊕	TREE	⊕	⊕	⊕ GUTTER (SOUTH & EAST)
EXISTING	LEGEND-PLAN	PROPOSED	EXISTING	LEGEND-PLAN	PROPOSED	EXISTING
EXISTING	LEGEND-PROFILE	PROPOSED	EXISTING	LEGEND-PROFILE	PROPOSED	EXISTING

LOCATION APPROVED	B.M. ELEV.	FIELD BOOK #:
UNDERGROUND STRUCTURES	POSTED TO LIS:	
SUPV. U/G STRUCTURES COMMITTEE	DATE	
NOTE:		
LOCATION OF UNDERGROUND STRUCTURES AS SHOWN ARE BASED ON THE BEST INFORMATION AVAILABLE BUT NO GUARANTEE IS GIVEN THAT ALL EXISTING UTILITIES ARE SHOWN OR THAT THE GIVEN LOCATIONS ARE EXACT. CONFIRMATION OF EXISTENCE AND EXACT LOCATION OF ALL SERVICES MUST BE OBTAINED FROM THE INDIVIDUAL UTILITIES BEFORE PROCEEDING WITH CONSTRUCTION.		
NO.	REVISIONS	DATE BY

**CITY OF WINNIPEG**  
**WATER AND WASTE**  
**ENGINEERING DIVISION**

DESIGNED BY: DB/SC  
CHECKED BY: SC

DRAWN BY: CJH  
APPROVED BY: KZ

HOR. SCALE: 1:250  
VERTICAL: 1:50

RELEASED FOR CONSTRUCTION

DATE: 2008 07 08

ENGINEER'S SEAL

ORIGINAL SIGNED BY: K.R. ZUREK  
08/07/08

BID OPPORTUNITY: 499-2008  
FILENAME: 8606.dwg  
PLOT DATE: 2008 07 08

**THE CITY OF WINNIPEG**  
**WATER AND WASTE DEPARTMENT**

2008 SEWER RENEWALS  
BY CIPP LINING  
**LAXDAL ROAD**  
MH AT ROBLIN BOULEVARD TO  
1ST MH S OF ROBLIN BOULEVARD

SHEET 8 OF 24  
CITY DRAWING NUMBER  
8606