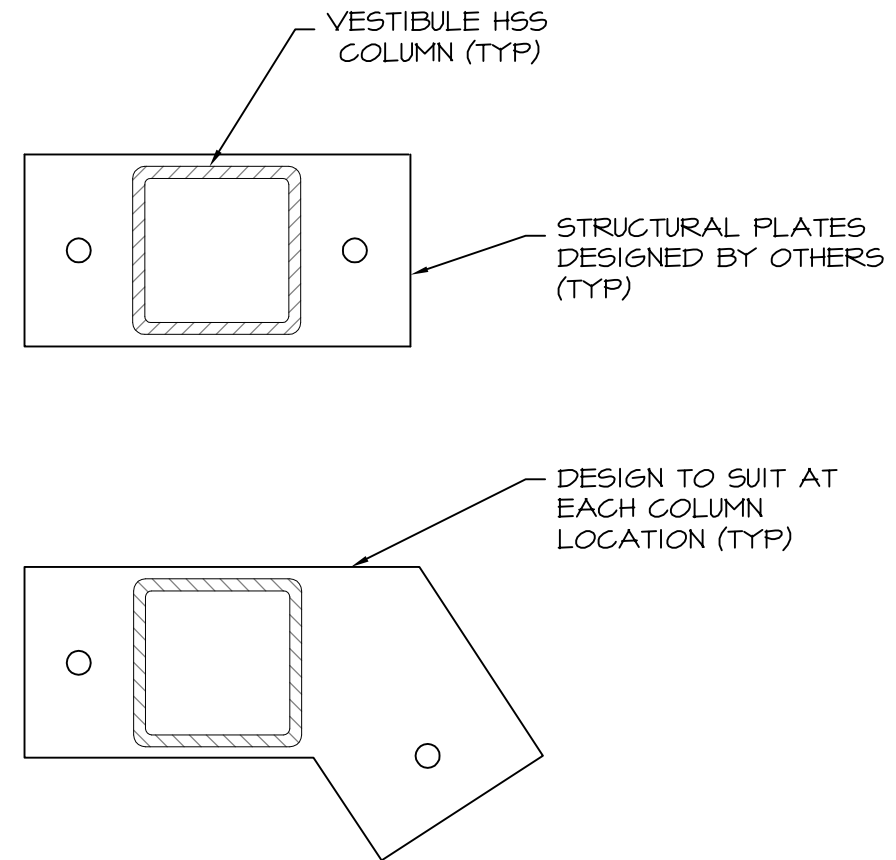
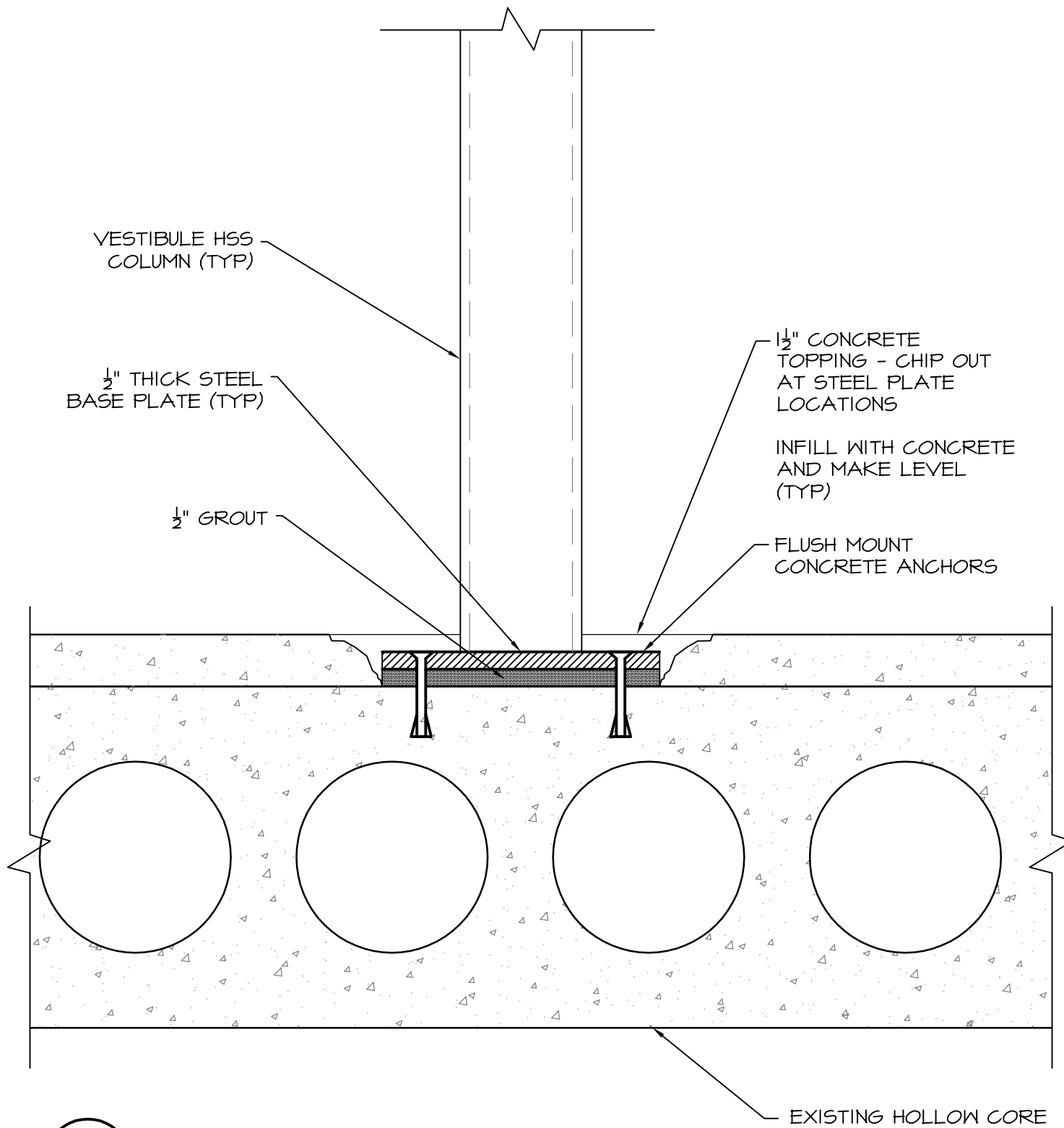


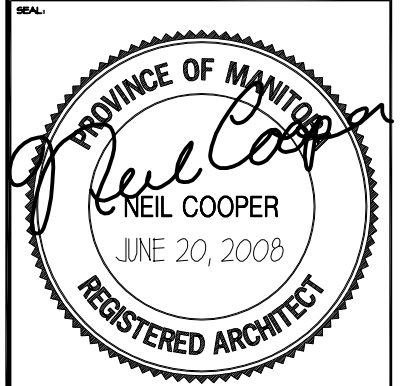
CONSTRUCTION NOTES:

GENERAL CONTRACTOR TO SITE MEASURE & VERIFY ALL DIMENSIONS, OPENINGS, COORDINATE FRAME & STEEL BASE PLATE SIZES WITH MANUFACTURER & STRUCTURAL ENGINEER, AND ADVISE THE CONTRACT ADMINISTRATOR OF ANY DISCREPANCIES.



**BASE PLATES**  
NTS

**1** DETAIL  
A4.3/A4.2 SCALE: 3/4"=1'-0"



REV	DESCRIPTION	DATE	BY
I	ISSUED FOR TENDER	JUNE 20, 2008	DG
O	ISSUED FOR REVIEW	APR 10, 2008	DG



THIS DRAWING MUST NOT BE SCALED.  
THE GENERAL CONTRACTOR SHALL VERIFY ALL DIMENSIONS, DATUMS AND LEVELS PRIOR TO COMMENCEMENT OF WORK AND IS HELD RESPONSIBLE FOR REPORTING ANY DISCREPANCY OR OMISSION TO NEIL COOPER ARCHITECT INC IMMEDIATELY.  
THIS DRAWING IS THE EXCLUSIVE PROPERTY OF NEIL COOPER ARCHITECT INC AND CAN BE REPRODUCED ONLY WITH THE PERMISSION OF NEIL COOPER ARCHITECT INC. IN WHICH CASE THE REPRODUCTION MUST BEAR THEIR NAME AS THE ARCHITECTURAL FIRM.

**EAST VESTIBULE DETAIL**  
PROJECT: **PAN AM POOL VESTIBULES**  
25 Poseiden Bay - Winnipeg, MB

Neil Cooper Architect Inc.  
10-395 Berry Street, Winnipeg, Manitoba R3J 1N6

Tuplin Group Inc.  
33-101 Hutchings Street, Winnipeg, Manitoba R2X 2V4

DRAWN BY: DG	CHECKED BY: NC	SHEET NO: A4.3	REV NO: R0
DATE: OCT 9, 2007			
SCALE: As Noted			
FILE: 07051/Contract Doc/Contract Dwgs/Arch Dwgs/VES-A4.3R0.dwg			