

16 6a 5a 4a 3a

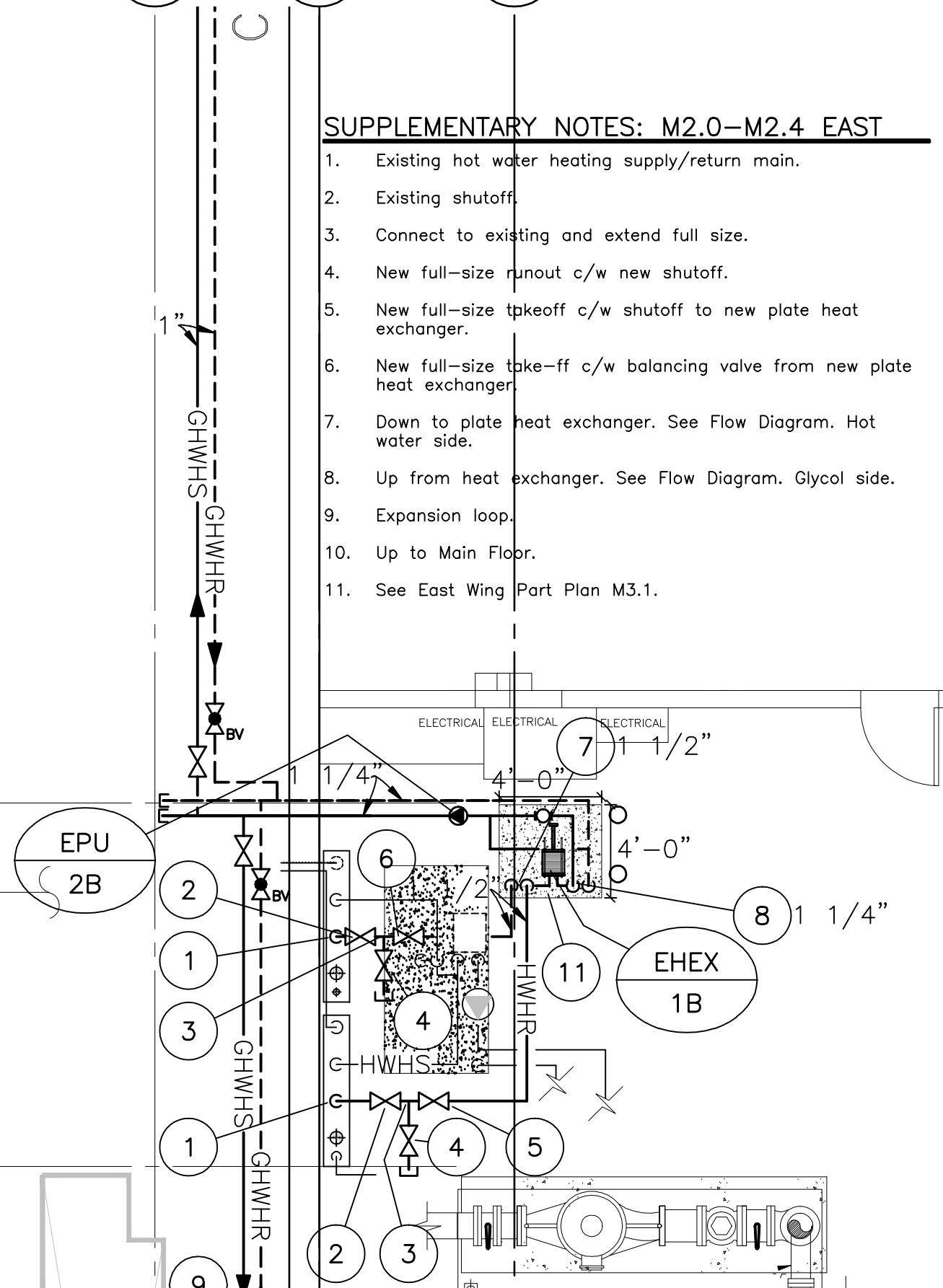
APEGN
 Certificate of Authorization
 Unies Ltd.
 No. 186 Expiry: April 30, 2009

SEAL:

 E.G. PHILLIPS
 REGISTERED PROFESSIONAL ENGINEER
 13 June 2008

SUPPLEMENTARY NOTES: M2.0-M2.4 EAST

1. Existing hot water heating supply/return main.
2. Existing shutoff.
3. Connect to existing and extend full size.
4. New full-size runout c/w new shutoff.
5. New full-size takeoff c/w shutoff to new plate heat exchanger.
6. New full-size take-off c/w balancing valve from new plate heat exchanger.
7. Down to plate heat exchanger. See Flow Diagram. Hot water side.
8. Up from heat exchanger. See Flow Diagram. Glycol side.
9. Expansion loop.
10. Up to Main Floor.
11. See East Wing Part Plan M3.1.



Ea

REV	DESCRIPTION	DATE	BY
4	ISSUED FOR TENDER	13 JUN/08	BP/RF
3	ISSUED FOR REVIEW	10 APR./08	BP/RF
2	ISSUED FOR TENDER	10 DEC./07	BP/RF
1	ISSUED FOR REVIEW		BP/RF

SEAL:

TPR MECHANICAL CONSULTANTS LTD.
 101-1555 ST. JAMES STREET, R3H 1B5
 Ph. 632-4068 Fax. 632-4068
unies Ltd. Consulting Engineers

THIS DRAWING MUST NOT BE SCALED.
 THE GENERAL CONTRACTOR SHALL VERIFY ALL DIMENSIONS, DATUMS AND LEVELS PRIOR TO COMMENCEMENT OF WORK AND IS HELD RESPONSIBLE FOR REPORTING ANY DISCREPANCY OR OMISSION TO NEIL COOPER ARCHITECT INC IMMEDIATELY.
 THIS DRAWING IS THE EXCLUSIVE PROPERTY OF NEIL COOPER ARCHITECT INC AND CAN BE REPRODUCED ONLY WITH THE PERMISSION OF NEIL COOPER ARCHITECT INC. IN WHICH CASE THE REPRODUCTION MUST BEAR THEIR NAME AS THE ARCHITECTURAL FIRM.

DRAWING:
PART BASEMENT FLOOR PLAN NO.2 NEW WORK
 PROJECT:
PAN AM POOL EAST VESTIBULES
 25 Poseiden Bay - Winnipeg, MB

Neil Cooper Architect Inc.
 10-395 Berry Street, Winnipeg, Manitoba R3J 1N6

Tuplin Group Inc.
 20-011 Mainway Blvd, Winnipeg, Manitoba R2K 2M4

DRAWN BY: lp	CHECKED BY: BP/RF	SHEET NO: M2.1R4	REV NO:
DATE: 13 JUNE 2008	SCALE: As Noted		
FILE:			

PART BASEMENT FLOOR PLAN NO.2 - NEW WORK
 SCALE: 3/16" = 1'-0"