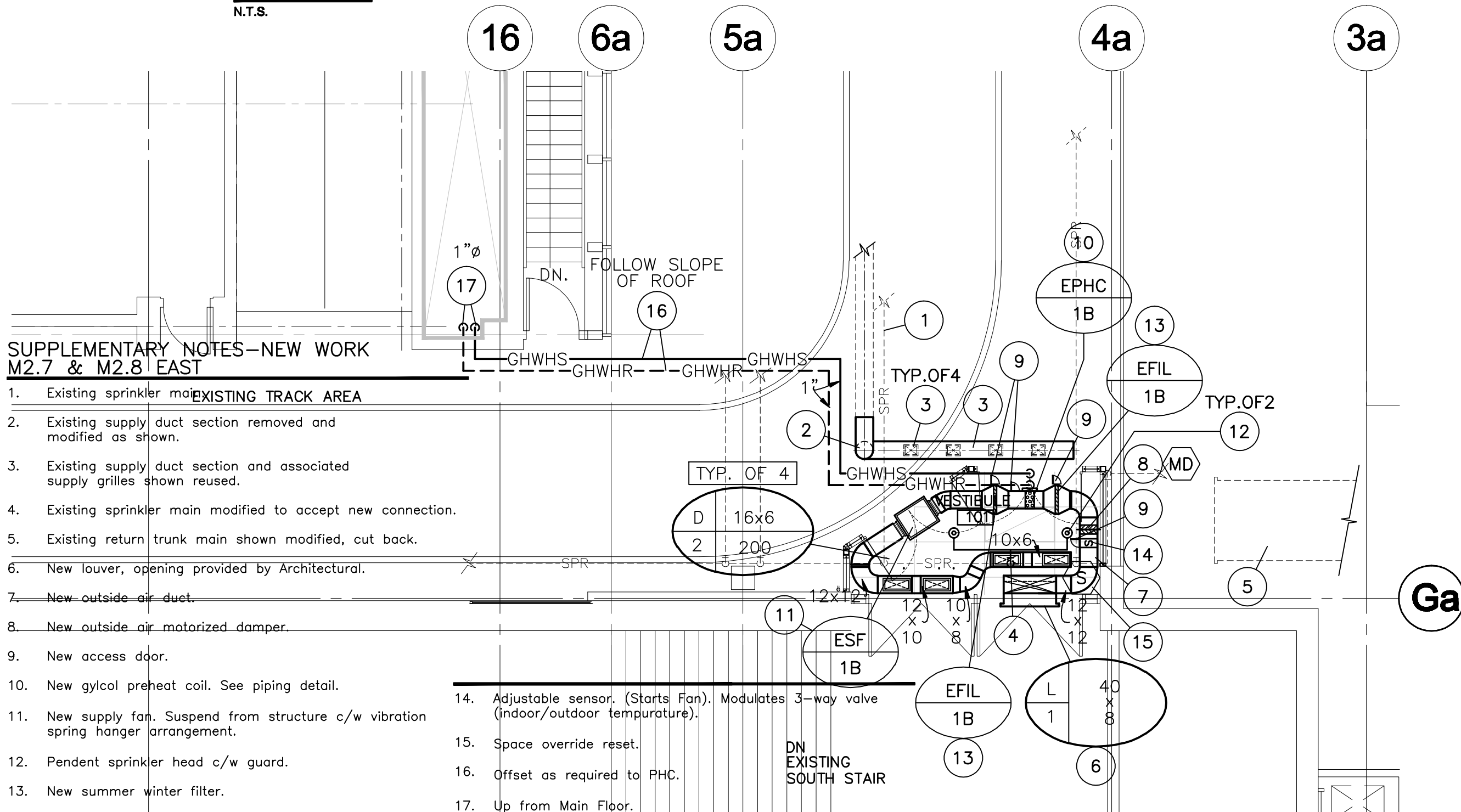


KEY PLAN
N.T.S.

APCA
Certificate of Authorization
Unies Ltd.
No. 186 Expiry: April 30, 2009

REV	DESCRIPTION	DATE	BY
4	ISSUED FOR TENDER	13 JUN/08	BP/RF
3	ISSUED FOR REVIEW	10 APR./08	BP/RF
2	ISSUED FOR TENDER	10 DEC./07	BP/RF
1	ISSUED FOR REVIEW		BP/RF



**SUPPLEMENTARY NOTES—NEW WORK
M2.7 & M2.8 EAST**

1. Existing sprinkler main **EXISTING TRACK AREA**
2. Existing supply duct section removed and modified as shown.
3. Existing supply duct section and associated supply grilles shown reused.
4. Existing sprinkler main modified to accept new connection.
5. Existing return trunk main shown modified, cut back.
6. New louver, opening provided by Architectural.
7. New outside air duct.
8. New outside air motorized damper.
9. New access door.
10. New glycol preheat coil. See piping detail.
11. New supply fan. Suspend from structure c/w vibration spring hanger arrangement.
12. Pendant sprinkler head c/w guard.
13. New summer winter filter.
14. Adjustable sensor. (Starts Fan). Modulates 3-way valve (indoor/outdoor temperature).
15. Space override reset.
16. Offset as required to PHC.
17. Up from Main Floor.

PART SECOND FLOOR PLAN NO.1 - NEW WORK
SCALE: 3/16" = 1'-0"

TPR MECHANICAL CONSULTANTS LTD.
101-1555 ST. JAMES STREET, R3H 1B5
PH. 632-4088 Fax. 632-4088
unies Ltd. Consulting Engineers

THIS DRAWING MUST NOT BE SCALED.
THE GENERAL CONTRACTOR SHALL VERIFY ALL DIMENSIONS, DATUMS AND LEVELS PRIOR TO COMMENCEMENT OF WORK AND IS HELD RESPONSIBLE FOR REPORTING ANY DISCREPANCY OR OMISSION TO NEIL COOPER ARCHITECT INC IMMEDIATELY.
THIS DRAWING IS THE EXCLUSIVE PROPERTY OF NEIL COOPER ARCHITECT INC AND CAN BE REPRODUCED ONLY WITH THE PERMISSION OF NEIL COOPER ARCHITECT INC. IN WHICH CASE THE REPRODUCTION MUST BEAR THEIR NAME AS THE ARCHITECTURAL FIRM.

DRAWING: PART SECOND FLOOR PLAN NO.1 NEW WORK

PROJECT: PAN AM POOL EAST VESTIBULES
25 Poseiden Bay - Winnipeg, MB

Neil Cooper Architect Inc.
10-395 Berry Street, Winnipeg, Manitoba R3J 1K6

Tuplin Group Inc.
80-081 Mainway Street, Winnipeg, Manitoba R2T 2K4

DRAWN BY:	CHECKED BY:	SHEET NO:	REV NO:
lp	BP/RF		
DATE:	13 JUNE 2008	M2.7R4	
SCALE:	As Noted		
FILE:			