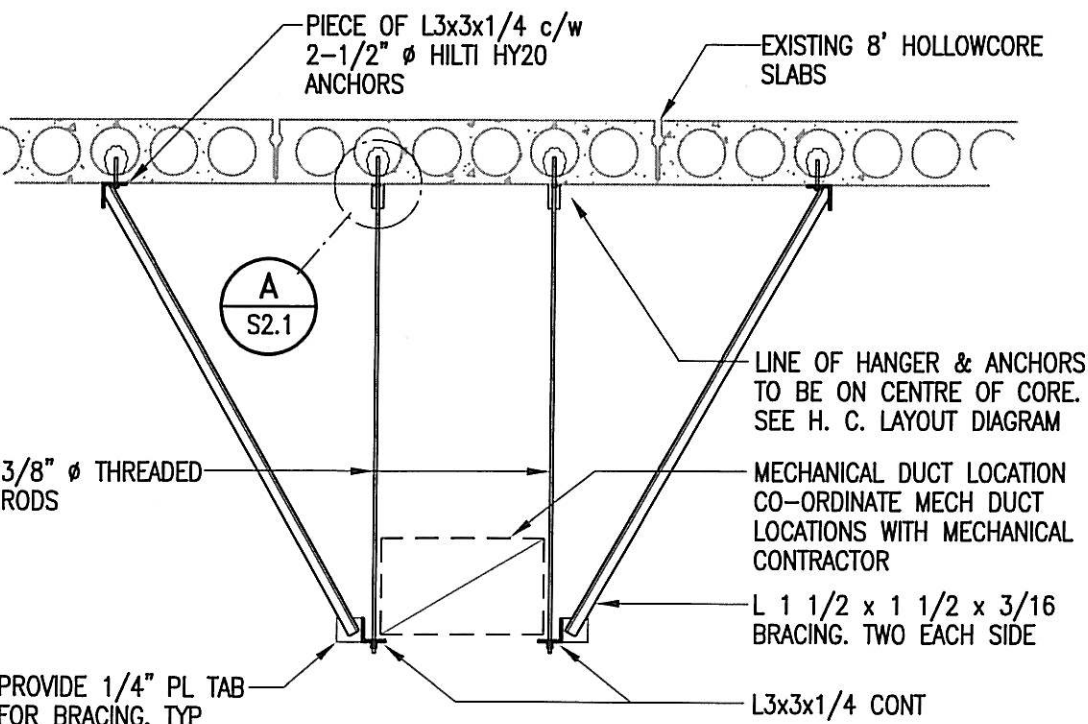
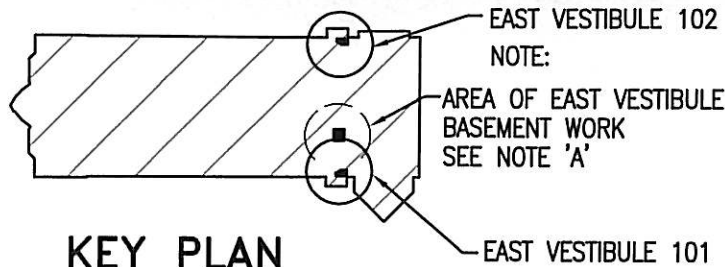


PART ROOF FRAMING PLAN

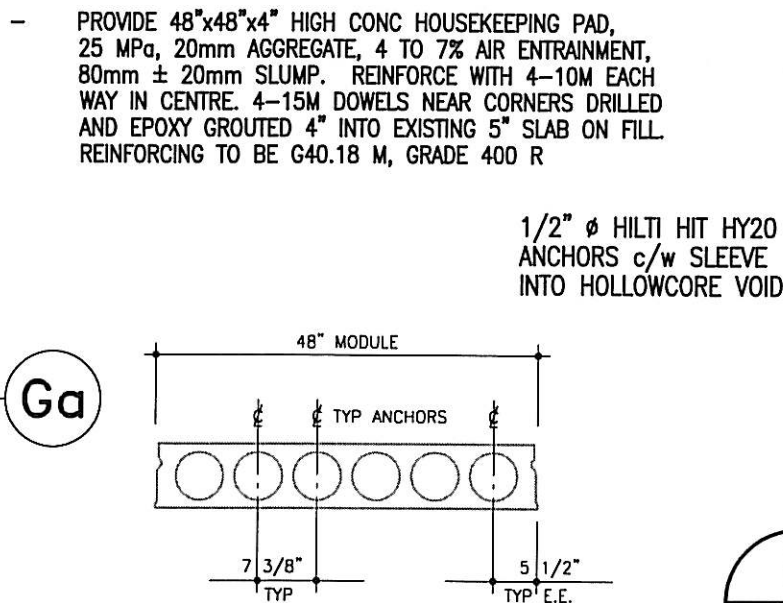
1/4" = 1'-0"



1 SECTION
S2.1 1/2" = 1'-0"

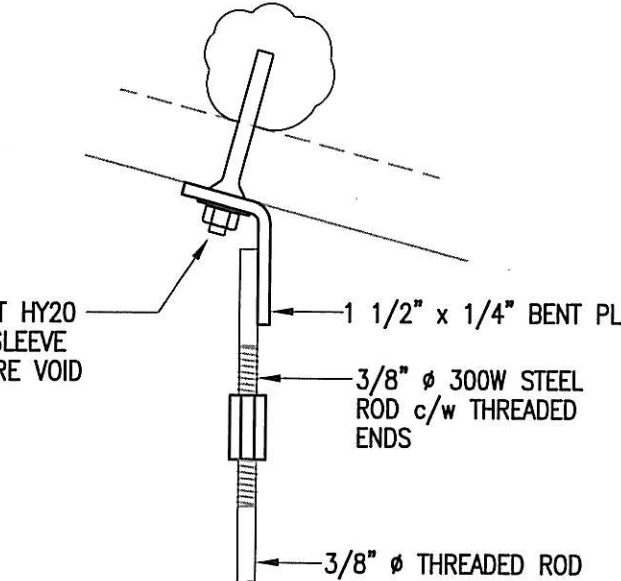


EAST VESTIBULE 102 IS A DUPLICATE MIRROR COPY OF EAST VESTIBULE 101



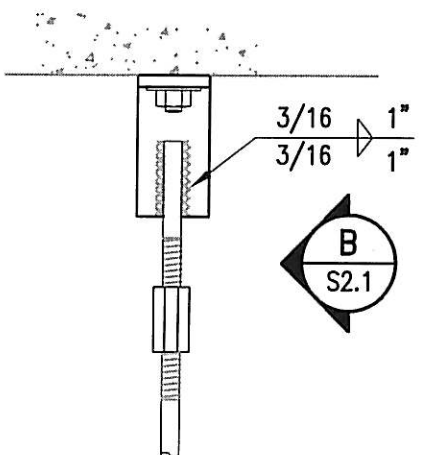
HOLLOWCORE LAYOUT DIAGRAM

1/4" = 1'-0"

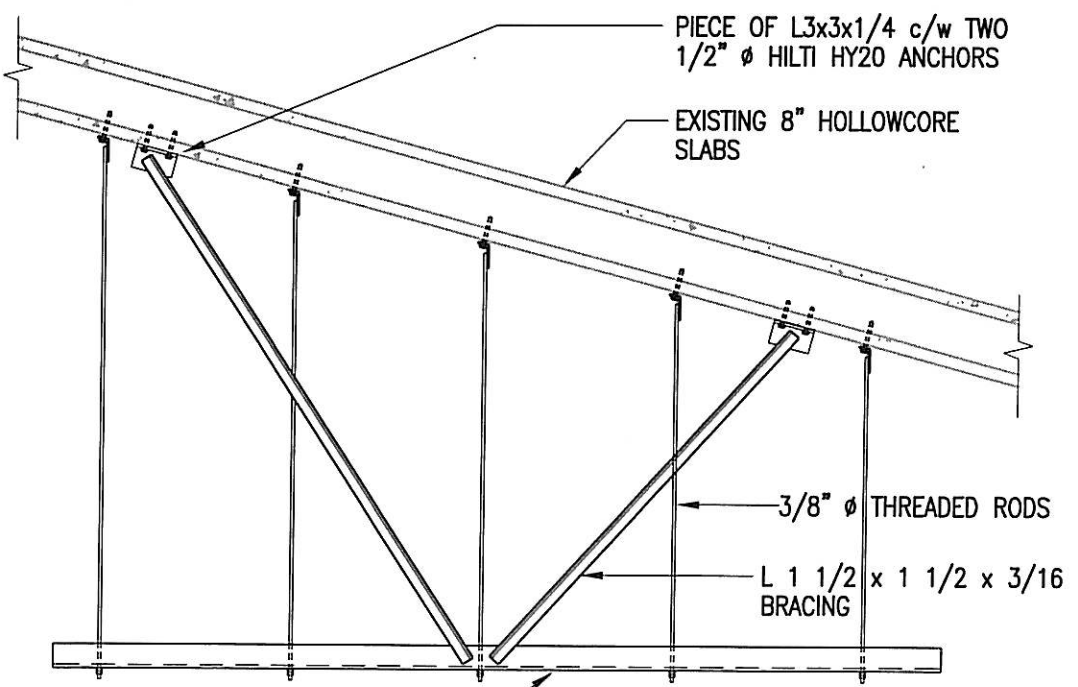


B DETAIL

S2.1 3" = 1'-0"

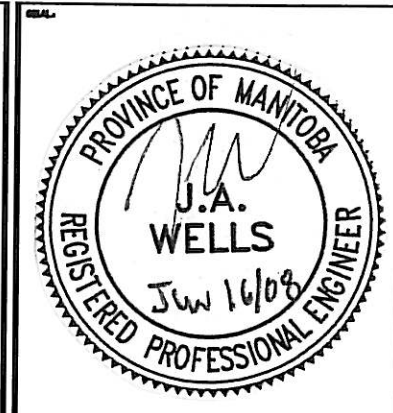


A DETAIL
S2.1 3" = 1'-0"



C SECTION
S2.1 1/2" = 1'-0"

APEGM
Certificate of Authorization
Crosier Kilgour & Partners Ltd.
No. 235 Date: May 29/08



REV	ISSUED FOR TENDER	JUN 26/08	MB
REV	DESCRIPTION	DATE	BY

CROSIER KILGOUR & PARTNERS LTD. 2007-1146
Consulting Structural Engineers
300-275 Carlton Street, Winnipeg, MB R3C 5R6
Tel: (204) 943-7501 Fax: (204) 943-7507

THIS DRAWING MUST NOT BE SCALED.
THE GENERAL CONTRACTOR SHALL VERIFY ALL DIMENSIONS, CLARIFY AND LEGALIZE PRIOR TO COMMENCEMENT OF WORK, AND IS HELD RESPONSIBLE FOR REPORTING ANY DISCREPANCY OR OMISSION TO THE ARCHITECT IMMEDIATELY.
THIS DRAWING IS THE EXCLUSIVE PROPERTY OF NEIL COOPER ARCHITECT INC. AND CAN BE REPRODUCED ONLY WITH THE PERMISSION OF NEIL COOPER ARCHITECT INC. IN WHICH CASE THE REPRODUCTION MUST BEAR THEIR NAME AS THE ARCHITECTURAL FIRM.

EAST VESTIBULE DETAILS

PAN AM POOL VESTIBULES
25 Poseiden Bay - Winnipeg, MB

Neil Cooper Architect Inc.
10-395 Berry Street, Winnipeg, Manitoba R3J 1N6

Tuplin Group Inc.
33-101 Hutchings Street, Winnipeg, Manitoba R2X 2V4

DRAWN BY MB	CHECKED BY GG	SHEET NO. S21R0	REV NO.
DATE MAY 29, 2008		SCALE As Noted	
FILED			