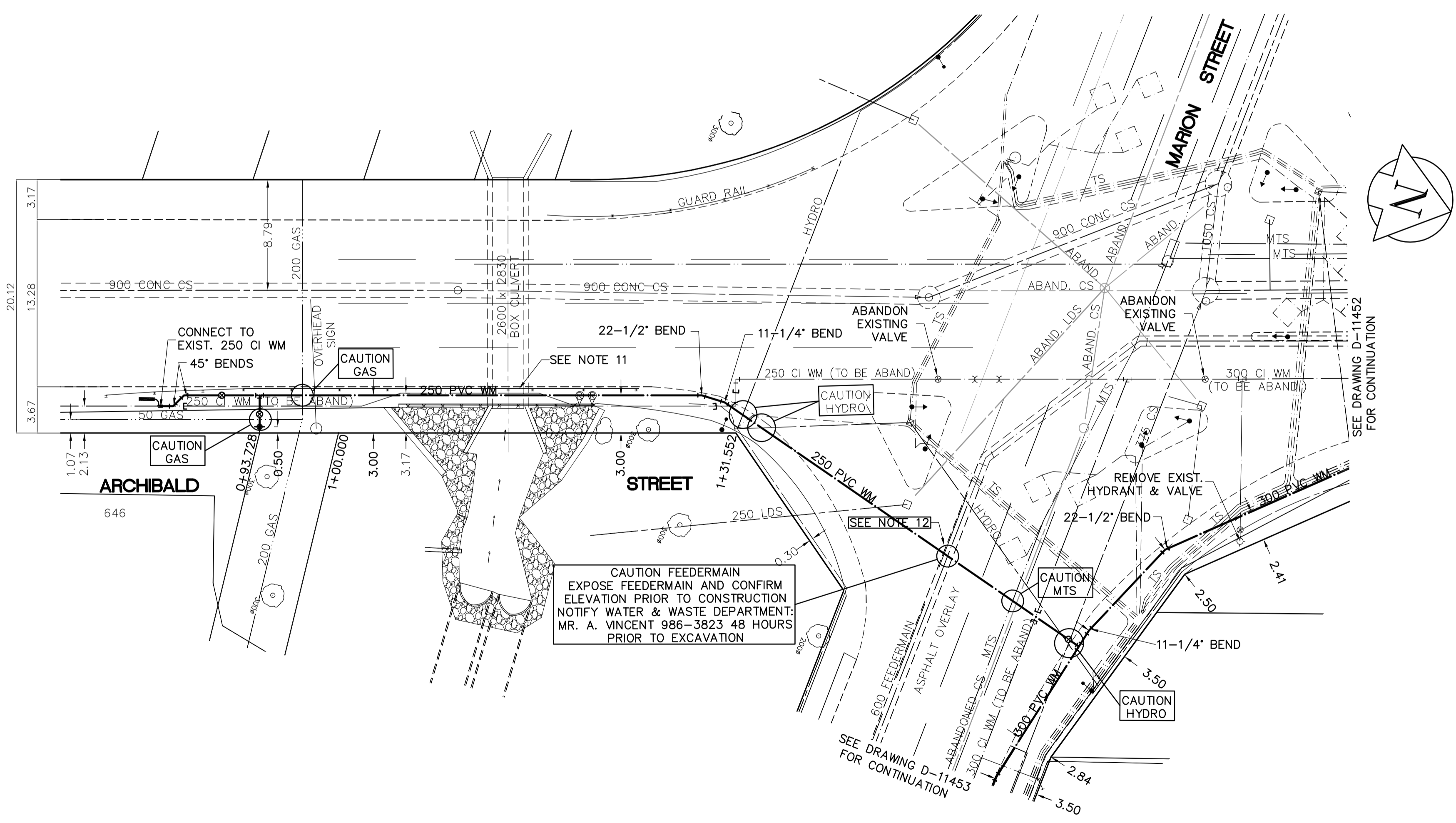
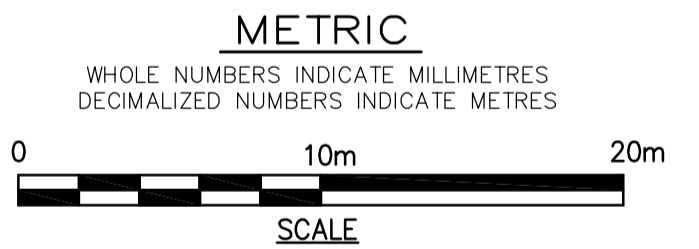


- CONSTRUCTION NOTES**
1. EXPOSE WATERMAIN CONNECTIONS AND CONFIRM INVERTS PRIOR TO CONSTRUCTION.
 2. INSTALL WATERMAIN BY TRENCHLESS METHODS.
 3. ALL MATERIALS SHALL CONFORM TO THE CITY OF WINNIPEG STANDARD CONSTRUCTION SPECIFICATIONS.
 4. MINIMUM COVER TO TOP OF PROPOSED WATERMAIN SHALL BE 2.5m FROM STREET CENTERLINE.
 5. INSTALL ALL HYDRANTS WITH FLANGE ELEVATION 50mm - 150mm ABOVE FINISHED GRADE.
 6. REPLACE ALL EXISTING LEAD SERVICES FROM THE PROPOSED WATERMAIN TO PROPERTY LINE.
 7. NOTIFY ALL AFFECTED RESIDENTS AND BUSINESSES 24 HOURS IN ADVANCE OF ANY WATER SHUTDOWN OR DISRUPTION OF SERVICE.
 8. LOCATION OF WATER SERVICES SHOWN ON DRAWINGS ARE APPROXIMATE. THE CONTRACTOR SHALL FIELD LOCATE ALL WATER SERVICES PRIOR TO CONSTRUCTION.
 9. ALL VALVES SHALL BE BLACK TOP (CLOCKWISE TO CLOSE).
 10. BACKFILL UNDER OR WITHIN 1.0m OF PAVEMENTS ON ARCHIBALD OR MARION SHALL BE CLASS 1 BACKFILL EXCEPT AS NOTED. BACKFILL UNDER SIDEWALKS SHALL BE CLASS 3 BACKFILL.
 11. REMOVE AND REPLACE EXISTING BALANCED ALUMINUM GUARD RAILS & POSTS AS REQUIRED TO INSTALL NEW WATERMAIN.
 12. EXPOSE FEEDERMAIN BY VACUUM EXCAVATION METHODS PRIOR TO CONSTRUCTION. VERIFY ELEVATION. MAINTAIN MINIMUM 1.0 VERTICAL CLEARANCE BELOW FEEDERMAIN. FACE OF SHAFTS FOR FEEDERMAIN UNDERCROSSING SHALL BE A MINIMUM OF 5.0m FROM CENTERLINE OF FEEDERMAIN.



APEGM
 Certificate of Authorization
 Earth Tech Canada Inc.
 No. 730



CAUTION FEEDERMAIN
 EXPOSE FEEDERMAIN AND CONFIRM ELEVATION PRIOR TO CONSTRUCTION. NOTIFY WATER & WASTE DEPARTMENT. MR. A. VINCENT 986-3823 48 HOURS PRIOR TO EXCAVATION

EXISTING	LEGEND - PLAN	PROPOSED	EXISTING	LEGEND - PLAN	PROPOSED	EXISTING	LEGEND - PROFILE	PROPOSED
150 mm W.M.	WATERMAIN	150 mm W.M.	HYDRO	TELEPHONE	150 mm W.M.	WATERMAIN	HYDRANT	
300mm L.D.S.	LAND DRAINAGE SEWER	300mm L.D.S.	CONCRETE	ASPHALT	300mm L.D.S.	LAND DRAINAGE SEWER	VALVE	
250mm W.W.S.	WASTEWATER SEWER	250mm W.W.S.	PROPERTY LINE	SURVEY BAR	250mm W.W.S.	WASTE WATER SEWER	MANHOLE	
	MANHOLE		CURB STOP	TREE		CATCH BASIN	CURB INLET	
	CATCH BASIN		ANODE	CONCRETE SIDEWALK		JUNCTIONS	CULVERT	
	CURB INLET		FENCE			CULVERT	GAS	
	JUNCTIONS					GAS		

LOCATION APPROVED UNDERGROUND STRUCTURES
 SUPPLY U/G STRUCTURES COMMITTEE DATE
 NOTE:
 LOCATION OF UNDERGROUND STRUCTURES AS SHOWN ARE BASED ON THE BEST INFORMATION AVAILABLE, BUT NO GUARANTEE IS GIVEN THAT ALL EXISTING UTILITIES ARE SHOWN OR THAT THE GIVEN LOCATIONS ARE EXACT. CONFIRMATION OF EXISTENCE AND EXACT LOCATION OF ALL SERVICES MUST BE OBTAINED FROM THE INDIVIDUAL UTILITIES BEFORE PROCEEDING WITH CONSTRUCTION.

B.M. ELEV.	357 (654357) SW cor. Marion St. and CPR Emerson Subd. E. of Rue Archibald, 1st in 7.8m conc. pile, 7.2m W. of C/L of W. Railway tracks and 10.4m S. of C/L of Marion St. 231.509m.
0	ISSUED FOR TENDER 2008/07/03 GSK
A	ISSUED FOR REVIEW 2008/06/19 GSK
NO. REVISIONS	DATE BY

EARTH TECH	
Earth Tech (Canada) Inc. Winnipeg, Manitoba 204.477.5381	
DESIGNED BY GSK, GDL	CHECKED BY GSK
DRAWN BY DKA	APPROVED BY KWF
HOR. SCALE: 1:250	RELEASED FOR CONSTRUCTION BY: K. ZUREK
VERTICAL: 1:50	DATE 2008/06/19
DATE 2008/06/19	DATE 2008/07/03

ENGINEER'S SEAL
 PROVINCE OF MANITOBA
 ORIGINAL SIGNED BY
K.W. FITCHETT
 REGISTERED PROFESSIONAL ENGINEER
 CONSULTANT DRAWING NO. 104449-001

THE CITY OF WINNIPEG
 Winnipeg WATER AND WASTE DEPARTMENT

2008 WATERMAIN RENEWALS CONTRACT 5

ARCHIBALD STREET
 45m S. OF MARION ST. TO MARION ST.
 STA. 0+86 TO STA. 1+65

SHEET 1 OF 12
 CITY DRAWING NUMBER D-11451