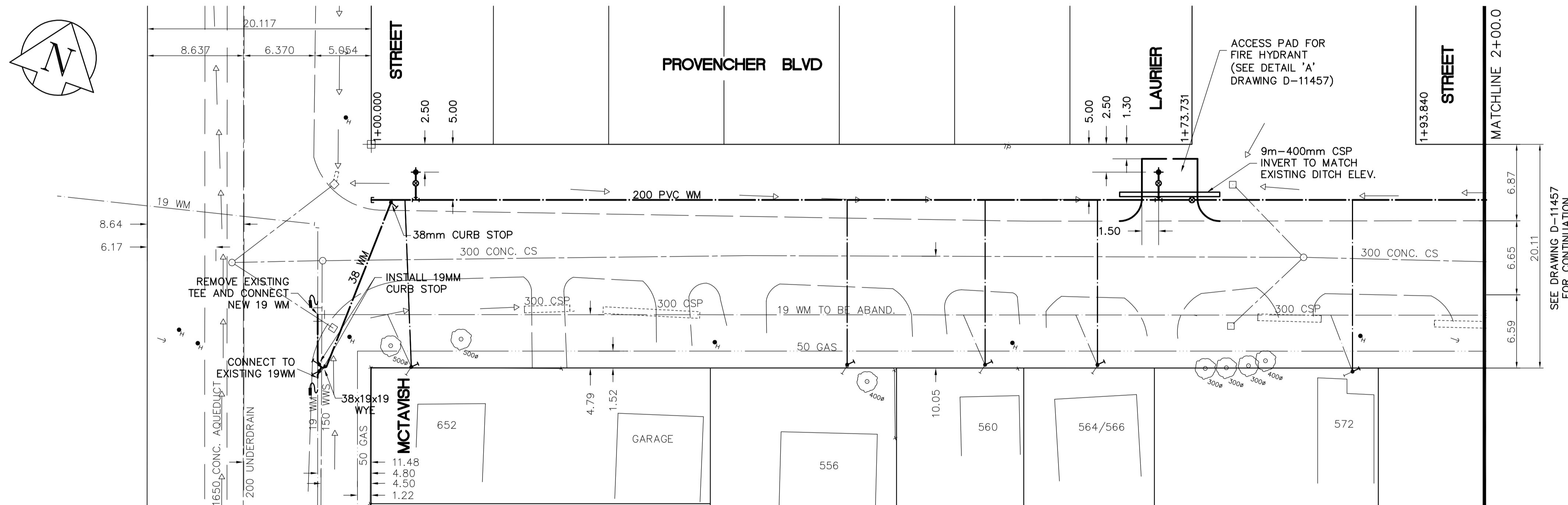
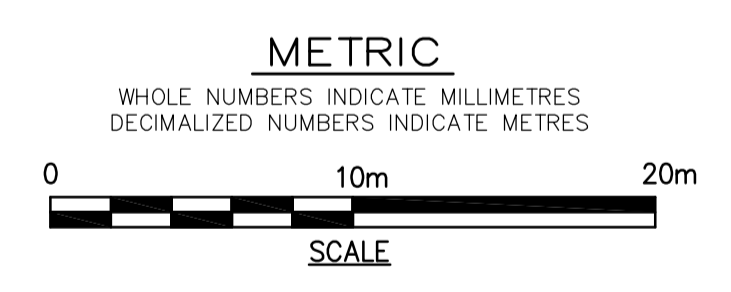


- CONSTRUCTION NOTES**
1. EXPOSE WATERMAIN CONNECTIONS AND CONFIRM INVERTS PRIOR TO CONSTRUCTION.
 2. INSTALL WATERMAIN BY TRENCHLESS METHODS.
 3. ALL MATERIALS SHALL CONFORM TO THE CITY OF WINNIPEG STANDARD CONSTRUCTION SPECIFICATIONS.
 4. MINIMUM COVER TO TOP OF PROPOSED WATERMAIN SHALL BE 2.5m FROM STREET CENTERLINE.
 5. INSTALL ALL HYDRANTS WITH FLANGE ELEVATION 50mm-150mm ABOVE FINISHED GRADE.
 6. REPLACE ALL EXISTING LEAD SERVICES FROM THE PROPOSED WATERMAIN TO PROPERTY LINE.
 7. NOTIFY ALL AFFECTED RESIDENTS AND BUSINESSES 24 HOURS IN ADVANCE OF ANY WATER SHUTDOWN OR DISRUPTION OF SERVICE.
 8. LOCATION OF WATER SERVICES SHOWN ON DRAWINGS ARE APPROXIMATE. THE CONTRACTOR SHALL FIELD LOCATE ALL WATER SERVICES PRIOR TO CONSTRUCTION.
 9. ALL VALVES SHALL BE BLACK TOP (CLOCKWISE TO CLOSE).
 10. BACKFILL UNDER OR WITHIN 1.0m OF PAVEMENTS, INCLUDING SIDEWALKS SHALL BE CLASS 3 BACKFILL EXCEPT AS NOTED. BACKFILL IN BOULEVARDS SHALL BE CLASS 5 BACKFILL.



APEGM
 Certificate of Authorization
 Earth Tech Canada Inc.
 No. 730



ADDRESS	NATURE OF SERVICE	SIZE	MATERIAL	DISTANCE SC TO PROPERTY	POSITION OF SC (curb stop)	POSITION OF CC (corp)	COMMENTS
572 PROVENCHER BLVD	RESIDENTIAL	19 mm	COPPER	2.3 m	BUILDING		RENEW TO PROPERTY
566 PROVENCHER BLVD	RESIDENTIAL	19 mm	COPPER	2.9 m	BUILDING		DOUBLE SERVICE WITH 564. RENEW TO PROPERTY
564 PROVENCHER BLVD	RESIDENTIAL	0 mm					DOUBLE SERVICE WITH 566. RENEW TO PROPERTY
560 PROVENCHER BLVD	RESIDENTIAL	19 mm	COPPER	2.7 m	BUILDING		RENEW TO PROPERTY
556 PROVENCHER BLVD	RESIDENTIAL	19 mm	COPPER	6.1 m	BUILDING		RENEW TO PROPERTY
652 MCTAVISH ST	RESIDENTIAL	19 mm	COPPER	4.1 m	BUILDING		

EXISTING	LEGEND - PLAN	PROPOSED	EXISTING	LEGEND - PROFILE	PROPOSED
150 mm W.M.	WATERMAIN	150 mm W.M.	HYDRO	WATERMAIN	150 mm W.M.
300mm L.D.S.	LAND DRAINAGE SEWER	300mm L.D.S.	TELEPHONE	HYDRANT	300mm L.D.S.
250mm W.W.S.	WASTEWATER SEWER	250mm W.W.S.	CONCRETE	VALVE	250mm W.W.S.
	MANHOLE		ASPHALT	LAND DRAINAGE SEWER	
	CATCH BASIN		PROPERTY LINE	WASTE WATER SEWER	
	CURB INLET		SURVEY BAR	Q PROFILE	
	JUNCTIONS		CURB STOP		
	CULVERT		TREE		
	GAS		ANODE		
			CONCRETE SIDEWALK		
			FENCE		

LOCATION APPROVED UNDERGROUND STRUCTURES

SUPV. U/G STRUCTURES COMMITTEE DATE

NOTE:
 LOCATION OF UNDERGROUND STRUCTURES AS SHOWN ARE BASED ON THE BEST INFORMATION AVAILABLE, BUT NO GUARANTEE IS GIVEN THAT ALL EXISTING UTILITIES ARE SHOWN OR THAT THE GIVEN LOCATIONS ARE EXACT. CONFIRMATION OF EXISTENCE AND EXACT LOCATION OF ALL SERVICES MUST BE OBTAINED FROM THE INDIVIDUAL UTILITIES BEFORE PROCEEDING WITH CONSTRUCTION.

EARTH TECH
 Earth Tech (Canada) Inc. Winnipeg, Manitoba 204.477.5381

DESIGNED BY GSK, GDL CHECKED BY GSK
 DRAWN BY DKA APPROVED BY KWF

HOR. SCALE: 1:250
 VERTICAL: 1:50

RELEASED FOR CONSTRUCTION BY: K. ZUREK
 DATE 2008/07/03

ISSUED FOR TENDER 2008/07/03 GSK
 ISSUED FOR REVIEW 2008/06/19 GSK

ENGINEER'S SEAL
 PROVINCE OF MANITOBA
 ORIGINAL SIGNED BY
K.W. FITCHETT
 2008/07/03
 REGISTERED PROFESSIONAL ENGINEER

CONSULTANT DRAWING NO.
 104449-006

THE CITY OF WINNIPEG
 Winnipeg WATER AND WASTE DEPARTMENT

2008 WATERMAIN RENEWALS CONTRACT 5

PROVENCHER BLVD.
 MCTAVISH ST. TO DAWSON ROAD
 MCTAVISH ST. TO STA. 2+00

SHEET 6 OF 12
 CITY DRAWING NUMBER
D-11456