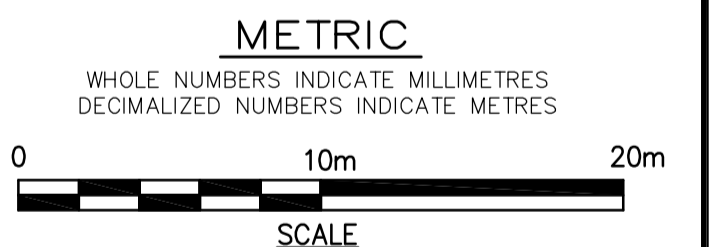


CONSTRUCTION NOTES

1. EXPOSE WATERMAIN CONNECTIONS AND CONFIRM INVERTS PRIOR TO CONSTRUCTION.
2. INSTALL WATERMAIN BY TRENCHLESS METHODS.
3. ALL MATERIALS SHALL CONFORM TO THE CITY OF WINNIPEG STANDARD CONSTRUCTION SPECIFICATIONS.
4. MINIMUM COVER TO TOP OF PROPOSED WATERMAIN SHALL BE 2.5m FROM STREET CENTERLINE.
5. INSTALL ALL HYDRANTS WITH FLANGE ELEVATION 50mm-150mm ABOVE FINISHED GRADE.
6. REPLACE ALL EXISTING LEAD SERVICES FROM THE PROPOSED WATERMAIN TO PROPERTY LINE.
7. NOTIFY ALL AFFECTED RESIDENTS AND BUSINESSES 24 HOURS IN ADVANCE OF ANY WATER SHUTDOWN OR DISRUPTION OF SERVICE.
8. LOCATION OF WATER SERVICES SHOWN ON DRAWINGS ARE APPROXIMATE. THE CONTRACTOR SHALL FIELD LOCATE ALL WATER SERVICES PRIOR TO CONSTRUCTION.
9. ALL VALVES SHALL BE BLACK TOP (CLOCKWISE TO CLOSE).
10. BACKFILL UNDER OR WITHIN 1.0m OF PAVEMENTS, INCLUDING SIDEWALKS SHALL BE CLASS 3 BACKFILL EXCEPT AS NOTED BELOW. BACKFILL EXCAVATIONS ON MARION PAVEMENT WITH CLASS 1 BACKFILL. BACKFILL IN BOULEVARDS SHALL BE CLASS 5 BACKFILL.



ADDRESS	NATURE OF SERVICE	SIZE	MATERIAL	DISTANCE SC TO PROPERTY	POSITION OF SC (curb stop)	POSITION OF CC (corp)	COMMENTS:
330 TRAVERSE AVE		0 mm			Long: 16.8 m W of EL PROPERTY LINE, W OF TRAVERSE Short: 3.0 m E of WL CORNER OF HOUSE	Long: 54.1 m W of EL HYDRANT	
329 TRAVERSE AVE	RESIDENTIAL	19 mm	COPPER	3.2 m	BUILDING		SERVICED OFF TRAVERSE AVENUE
327 TRAVERSE AVE		0 mm			Long: 27 m W of EL HOUSE Short: 19.8 m N of S PROPERTY LINE, N OF MARION	Long: 5.5 m S of NL BUILDING	
324 TRAVERSE AVE	RESIDENTIAL	19 mm	COPPER	21.9 m	BUILDING		
323 TRAVERSE AVE	RESIDENTIAL	19 mm	COPPER	7.6 m	BUILDING		
321 TRAVERSE AVE	SUMMER SERVICE	19 mm	COPPER	7.0 m	BUILDING		
318 TRAVERSE AVE	NOT IN USE	0 mm		29.9 m		Long: 14.3 m S of TRVERSE Short: 1.9 m S of TRVERSE	
312 TRAVERSE AVE		0 mm					

ADDRESS	NATURE OF SERVICE	SIZE	MATERIAL	DISTANCE SC TO PROPERTY	POSITION OF SC (curb stop)	POSITION OF CC (corp)	COMMENTS:
250 MARION ST	COMMERCIAL	19 mm	COPPER	0.3 m	PROPERTY	Long: 16.5 m E of WL BUILDING Short: 12.2 m N of NL PROPERTY LINE, MARION	
245 MARION ST	COMMERCIAL	0 mm	COPPER	0.3 m	BUILDING	Long: 11.0 m S of NL BUILDING Short: 14.3 m N of NL PROPERTY	
243 MARION ST	COMMERCIAL	19 mm	COPPER	0.2 m	BUILDING	Long: 8.5 m E of WL CORNER OF HOUSE Short: 5.5 m S of NL BUILDING	
235 MARION ST	COMMERCIAL	19 mm	COPPER	0.6 m	BUILDING	Long: 14.0 m W of EL BUILDING Short: 5.5 m S of NL BUILDING	
232 GOULET ST		0 mm				Long: 5.5 m S of NL BUILDING Short: 5.5 m S of NL BUILDING	
231 GOULET ST	RESIDENTIAL	0 mm				Long: 5.5 m S of NL BUILDING Short: 5.5 m S of NL BUILDING	

150 mm W.W.	WATERMAIN	150 mm W.W.	HYDRO	150 mm W.W.	WATERMAIN	150 mm W.W.	WATERMAIN
⊕	HYDRANT	⊕	TELEPHONE	⊕	HYDRANT	⊕	HYDRANT
⊕	VALVE	⊕	CONCRETE	⊕	VALVE	⊕	VALVE
⊕	LAND DRAINAGE SEWER	⊕	ASPHALT	⊕	LAND DRAINAGE SEWER	⊕	LAND DRAINAGE SEWER
⊕	WASTEWATER SEWER	⊕	PROPERTY LINE	⊕	WASTE WATER SEWER	⊕	WASTE WATER SEWER
⊕	MANHOLE	⊕	SURVEY BAR	⊕	PROFILE	⊕	PROFILE
⊕	CATCH BASIN	⊕	CURB STOP	⊕		⊕	
⊕	CURB INLET	⊕	TREE	⊕		⊕	
⊕	JUNCTIONS	⊕	ANODE	⊕		⊕	
⊕	CULVERT	⊕	CONCRETE SIDEWALK	⊕		⊕	
⊕	GAS	⊕	FENCE	⊕		⊕	
EXISTING	LEGEND - PLAN	PROPOSED	EXISTING	LEGEND - PLAN	PROPOSED	EXISTING	LEGEND - PROFILE

LOCATION APPROVED UNDERGROUND STRUCTURES

SUPPLY U/G STRUCTURES DATE COMMITTEE

NOTE:
LOCATION OF UNDERGROUND STRUCTURES AS SHOWN ARE BASED ON THE BEST INFORMATION AVAILABLE, BUT NO GUARANTEE IS GIVEN THAT ALL EXISTING UTILITIES ARE SHOWN OR THAT THE GIVEN LOCATIONS ARE EXACT. CONFIRMATION OF EXISTENCE AND EXACT LOCATION OF ALL SERVICES MUST BE OBTAINED FROM THE INDIVIDUAL UTILITIES BEFORE PROCEEDING WITH CONSTRUCTION.

B.M. N.W. Cor. Rue Des Meurons & Goulet St., Tbl. in S. Conc. foundation of Firehall No. 3 in District No. 5, 0.5 m W & 0.2 m below brick of S.E. Cor. of Bldg.

EARTH TECH
Earth Tech (Canada) Inc. Winnipeg, Manitoba 204.477.5381

DESIGNED BY: GSK, GDL
CHECKED BY: GSK

DRAWN BY: GDL
APPROVED BY: KWF

0 ISSUED FOR TENDER 2008/07/03 GSK
A ISSUED FOR REVIEW 2008/06/19 GSK

NO. REVISIONS DATE BY

HOR. SCALE: 1:250
VERTICAL: 1:50

RELEASED FOR CONSTRUCTION BY: K. ZUREK

DATE 2008/06/19 DATE 2008/07/03

ENGINEER'S SEAL
PROVINCE OF MANITOBA
ORIGINAL SIGNED BY
K.W. FITCHETT
2008/07/03
REGISTERED PROFESSIONAL ENGINEER

CONSULTANT DRAWING NO. 104449-C10

THE CITY OF WINNIPEG
Winnipeg WATER AND WASTE DEPARTMENT

2008 WATERMAIN RENEWALS CONTRACT 5

TRaverse Avenue
MARION ST. TO BERTRAND ST.
MARION ST. TO STA. 1+75

SHEET 10 OF 12
CITY DRAWING NUMBER D-11460