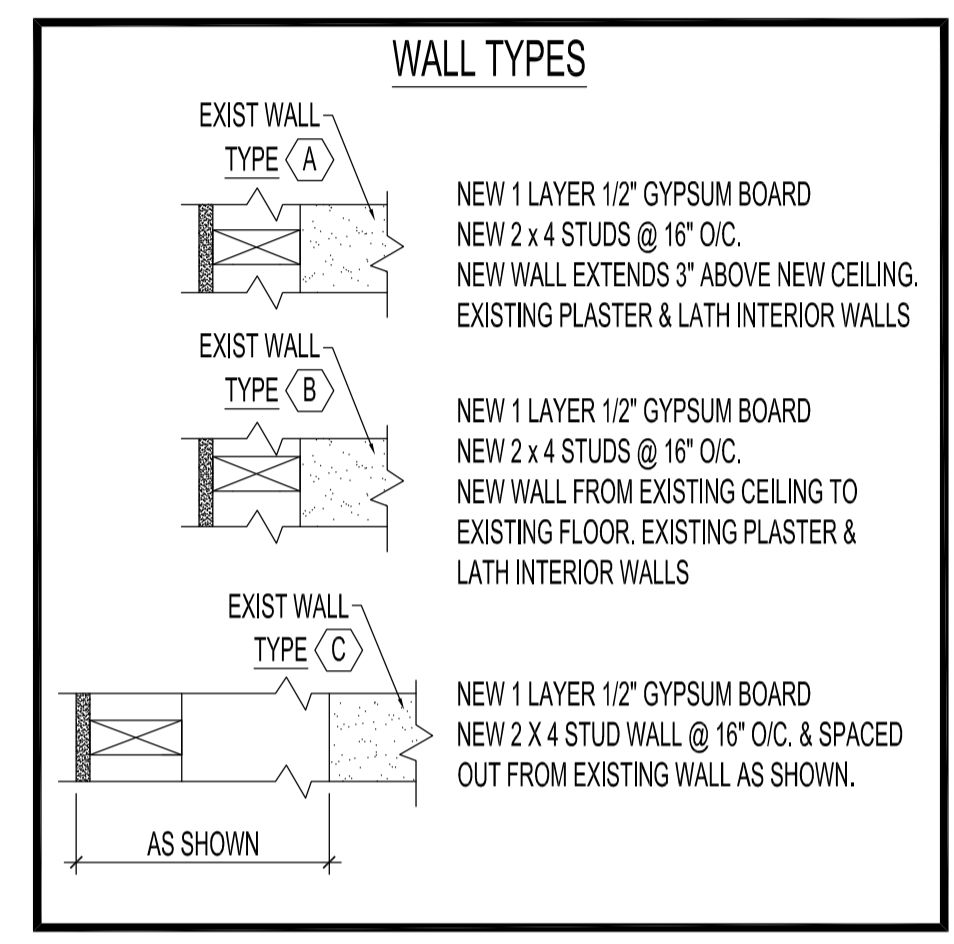
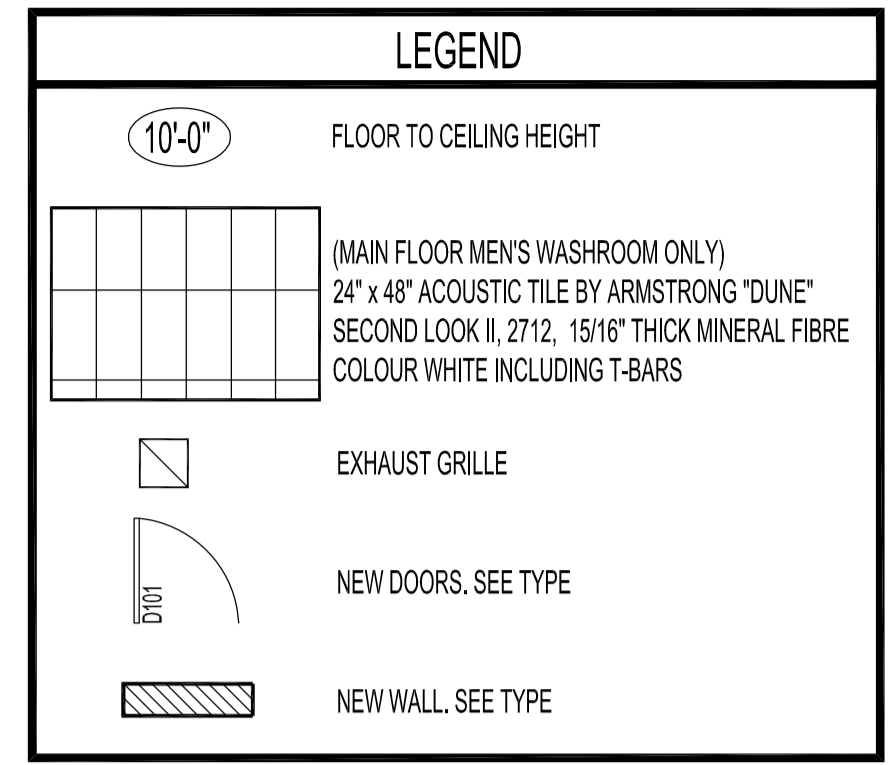
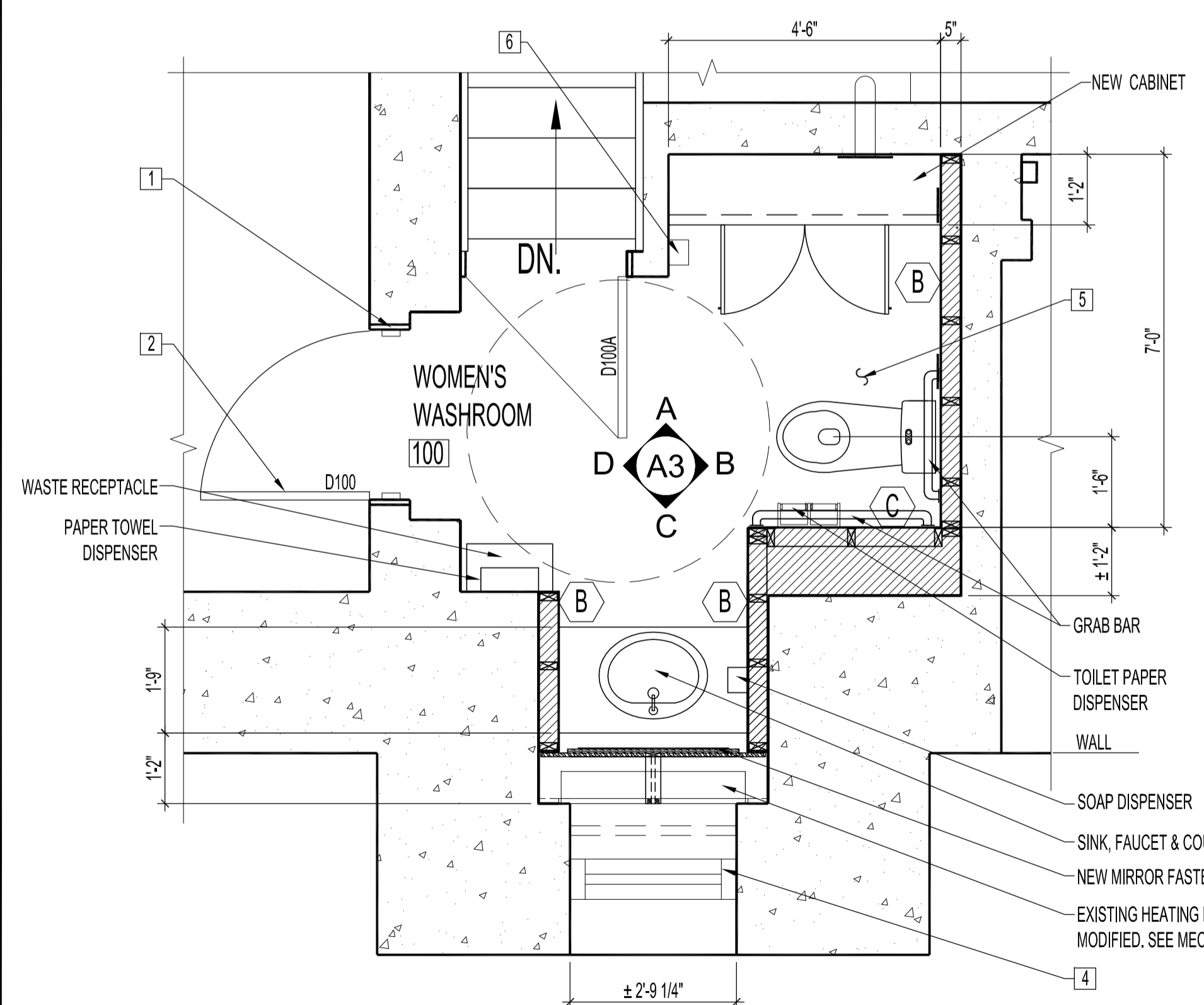


3 MAIN FLOOR MEN'S WASHROOM - REFLECTED CEILING PLAN
SCALE: 1/2"=1'-0"

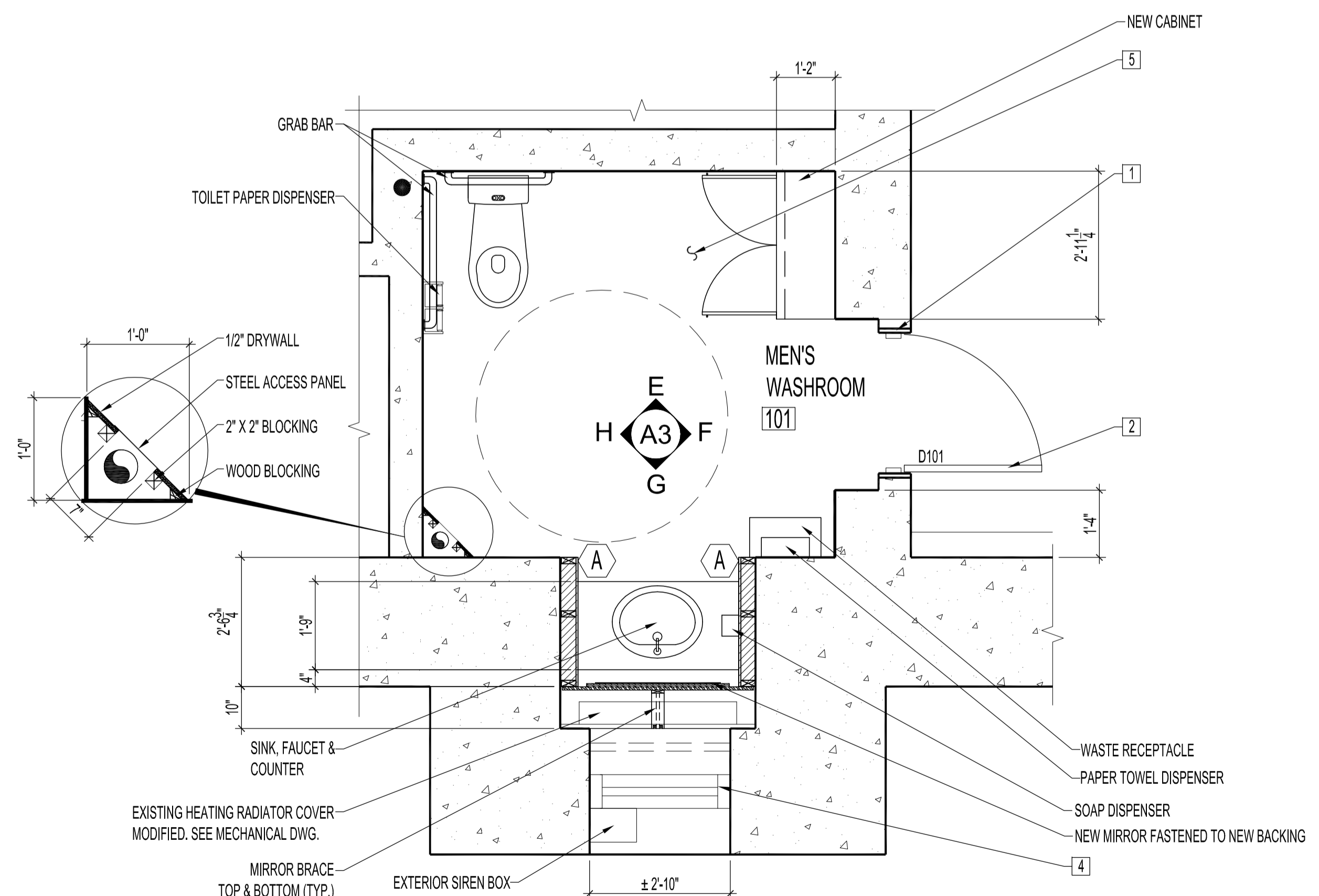
- WASHROOM ACCESSORIES:**
SUPPLY AND INSTALL ALL ACCESSORIES BY BOBRICK PRODUCTS AS NOTED BELOW:
- GRAB BAR: 36" B-5806 (2 REQUIRED), 24" B-5806 (2 REQUIRED).
 - TOILET PAPER DISPENSER: DOUBLE ROLL SURFACE MOUNTED, B-2740 (2 REQUIRED)
 - SANITARY NAPKIN DISPOSAL: SURFACE MOUNTED B-5270 (1 REQUIRED)
 - SANITARY NAPKIN DISPENSER: EXISTING.
 - SOAP DISPENSER: SURFACE MOUNTED B-5050 MATRIX SERIES (2 REQUIRED)
 - PAPER TOWEL DISPENSER: SURFACE MOUNTED, B-5262 MATRIX SERIES (2 REQUIRED)
 - WASTE RECEPTACLE: SURFACE MOUNTED, B-5277 MATRIX SERIES (2 REQUIRED)
 - MIRROR: 30" DIAMETER, 1/4" MIRROR SILICONE TO PLYWOOD. SEE A3. (2 REQUIRED). SILICONE TO BE COMPATIBLE WITH SILVER BACKING ON MIRROR. PROVIDE SHOP DRAWINGS FOR MIRROR SUPPORTS.



- RENOVATION NOTES:**
- LEVEL, PLUMB AND PREPARE EXISTING DOOR FRAMES TO SUIT NEW DOORS. PATCH DOOR FRAMES AND WALLS AS REQUIRED. SUPPLY AND INSTALL NEW DOOR STOPS, CASINGS & MOLDINGS TO COMPLETE DOOR INSTALLATION. FINISH AS PER ROOM SCHEDULE. SEE RENOVATION DWG.
 - SUPPLY & INSTALL NEW DOOR TO ACCOMMODATE EXISTING DOOR FRAME, SEE DOOR SCHEDULE.
 - CEILING TILE. SEE LEGEND
 - EXISTING WINDOWS TO REMAIN. REPLACE BROKEN GLAZING. REMOVE AND RE-GLAZE INTERIOR WINDOW, WEATHER STRIP & CAULK. CLEAN STORM WINDOW BOTH SIDES & WEATHER CAULK.
 - PATCH AND LEVEL FOR NEW FLOOR. SUPPLY & INSTALL 1/4" "PRO-BOARD" OVER ENTIRE WASHROOM FLOOR AREAS TO ACCEPT NEW FLOORING. INSTALL NEW FLOORING AS PER MANUFACTURERS RECOMMENDATION. SEE ROOM FINISH SCHEDULE. SEE MECHANICAL & ELECTRICAL DWGS FOR CONDUIT & MECHANICAL FLOOR PENETRATION RELOCATIONS.
 - RELOCATED EXISTING SANITARY NAPKIN DISPENSER.



1 MAIN FLOOR WOMEN'S WASHROOM # 100 - RENOVATION PLAN
SCALE: 1/2"=1'-0"



2 MAIN FLOOR MEN'S WASHROOM # 101 - RENOVATION PLAN
SCALE: 1/2"=1'-0"

ORIGINAL STAMPED BY: R.K.FOK LI Arch.
DATE: 2008.07.07

NO.	REVISION/DESCRIPTION	BY	DATE
SEALS			

DRAWN BY	RCP	CHECKED BY	APPROVED
DATE	2008.07.07	USER APPROVAL	

CITY OF WINNIPEG
PLANNING, PROPERTY AND
DEVELOPMENT DEPARTMENT
CIVIC ACCOMMODATIONS DIVISION
300 - 65 GARRY ST. R3C 4K4

PROJECT
ARCHIVES BUILDING
BARRIER - FREE UPGRADE TO PUBLIC WASHROOMS

380 WILLIAM AVE.
SHEET TITLE
PARTIAL MAIN FLOOR PLAN
RENOVATION & REFLECTED CEILING PLAN

SCALE	PROJECT NO.	SHEET NO.
AS SHOWN	2008-006	A2