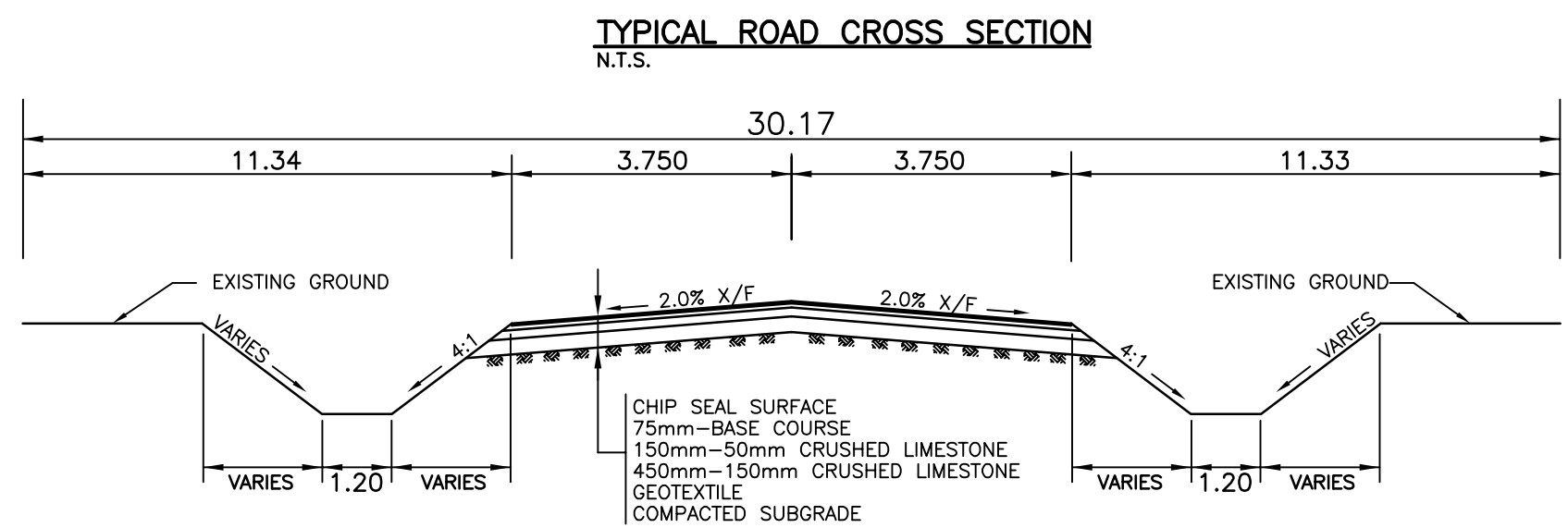
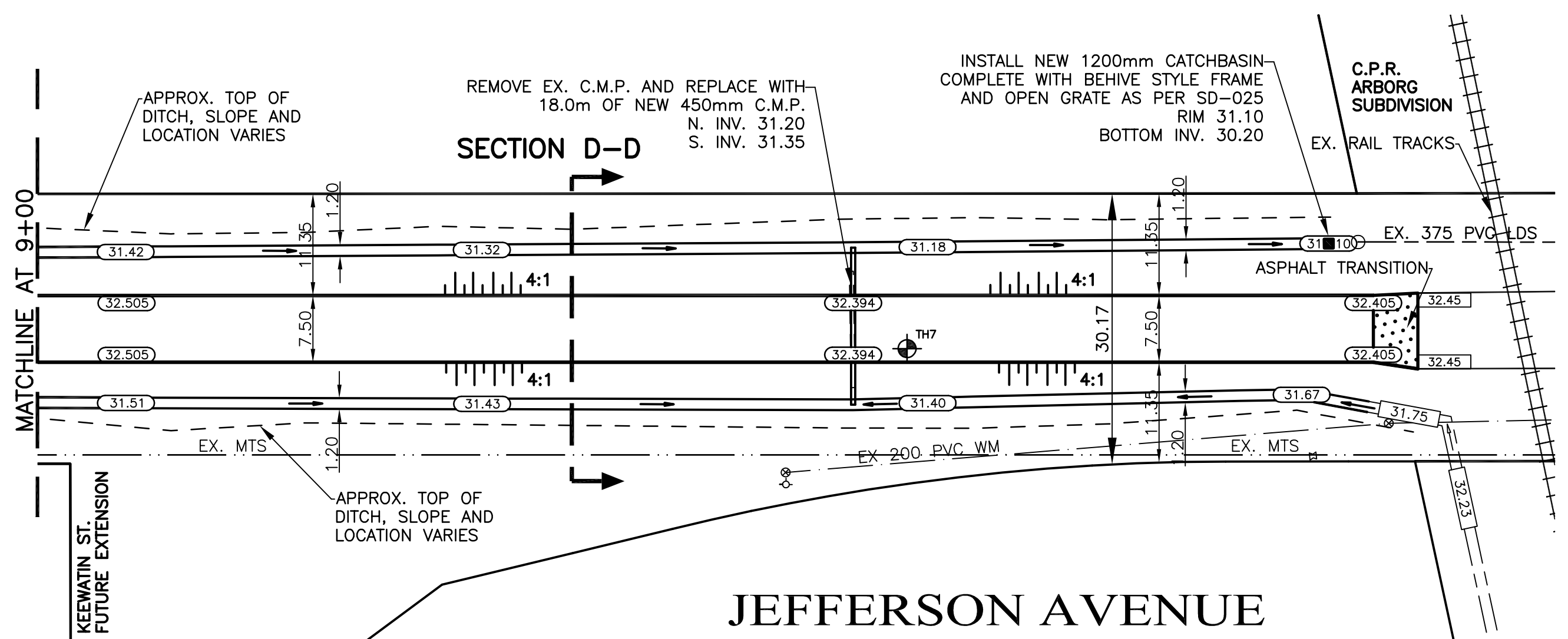
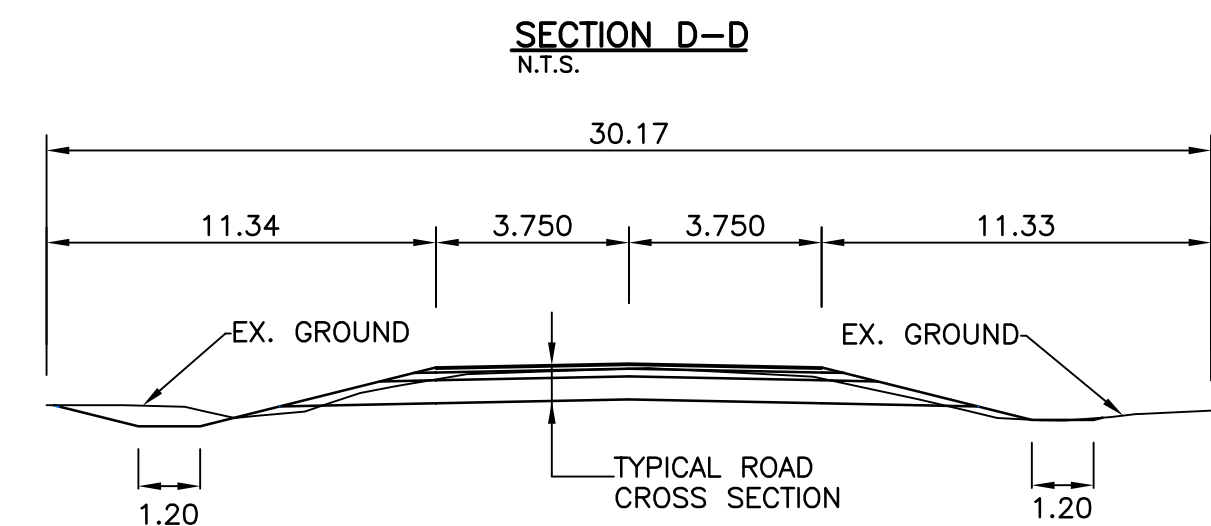


**NOTES:**

1. REGRADE EXISTING DITCHES AS DIRECTED BY CONTRACT ADMINISTRATOR
2. RENEW EXISTING APPROACHES AS DIRECTED BY CONTRACT ADMINISTRATOR



**CHAINAGE ALONG CENTER OF ROW**



**JEFFERSON AVENUE**

BENCHMARK:  
 N.E. COR. KING EDWARD ST. & JEFFERSON AVE., BRASS PLUG  
 PLUG IN 7.6m PILE, 2.6m E. OF HYDRO TRANSMISSION LINE  
 ON E. SIDE OF KING EDWARD ST. & 2.3m S. OF LINE OF WOODEN  
 POLES ON N. SIDE OF JEFFERSON AVE.

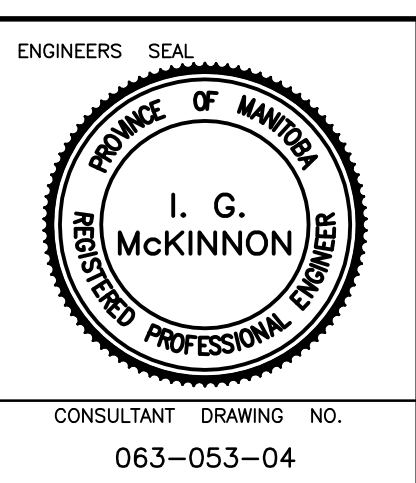
METRIC  
 WHOLE NUMBERS INDICATE MILLIMETRES  
 DECIMALIZED NUMBERS INDICATE METRES

---	WATERMAIN	---	HYDRO	---	CENTER LINE	---	LOCATION APPROVED
⊕	HYDRANT VALVE	⊕	M.T.S.	---	NORTH GUTTER LINE	---	NO. REVISIONS
---	LAND DRAINAGE SEWER	---	GRAVEL/CHIP SEAL	---	SOUTH GUTTER LINE	---	DATE
---	WASTE WATER SEWER	---	ASPHALT	---	NORTH DITCH	---	DATE
○	MANHOLE	○	PROPERTY LINE	---	SOUTH DITCH	---	DATE
□	CATCH BASIN	□	C.B. LEAD	---	LAND DRAINAGE SEWER	---	DATE
⊞	MTS	⊞	CULVERT	---	WATERMAIN	---	DATE
---	TRAFFIC SIGNAL	---	DITCH BOTTOM	---	MTS	---	DATE
---	STEAM HT.	---	DITCH TOP	---	GATEVALVE	---	DATE
---	GAS	---	ELEVATIONS	---	TESTHOLE	---	DATE
---	EXISTING	---	PROPOSED	---	EXISTING	---	DATE
---	LEGEND - PLAN	---	PROPOSED	---	LEGEND - PROFILE	---	DATE

DESIGNED BY	R.H.	CHECKED BY	S.M.
DRAWN BY	R.H.	APPROVED BY	I.McK
HOR. SCALE:	1:500	RELEASED FOR CONSTRUCTION	
VERT. SCALE:	1:25	DATE	JULY 2008

**GENIVAR**  
 200 TACHE AVENUE WINNIPEG, MANITOBA R2H 1A7  
 PH: (204)-233-2113 FAX: (204)-233-2080

CONSULTANT DRAWING NO. 063-053-04



**THE CITY OF WINNIPEG**  
 PUBLIC WORKS DEPARTMENT

**2008 GRAVEL ROAD RENEWALS**

**JEFFERSON AVENUE**  
 FROM MATCHLINE AT 9+00  
 TO LIMIT OF CONSTRUCTION AT 10+55

CITY DRAWING NO. SHEET 4 OF 4  
**558-2008**

