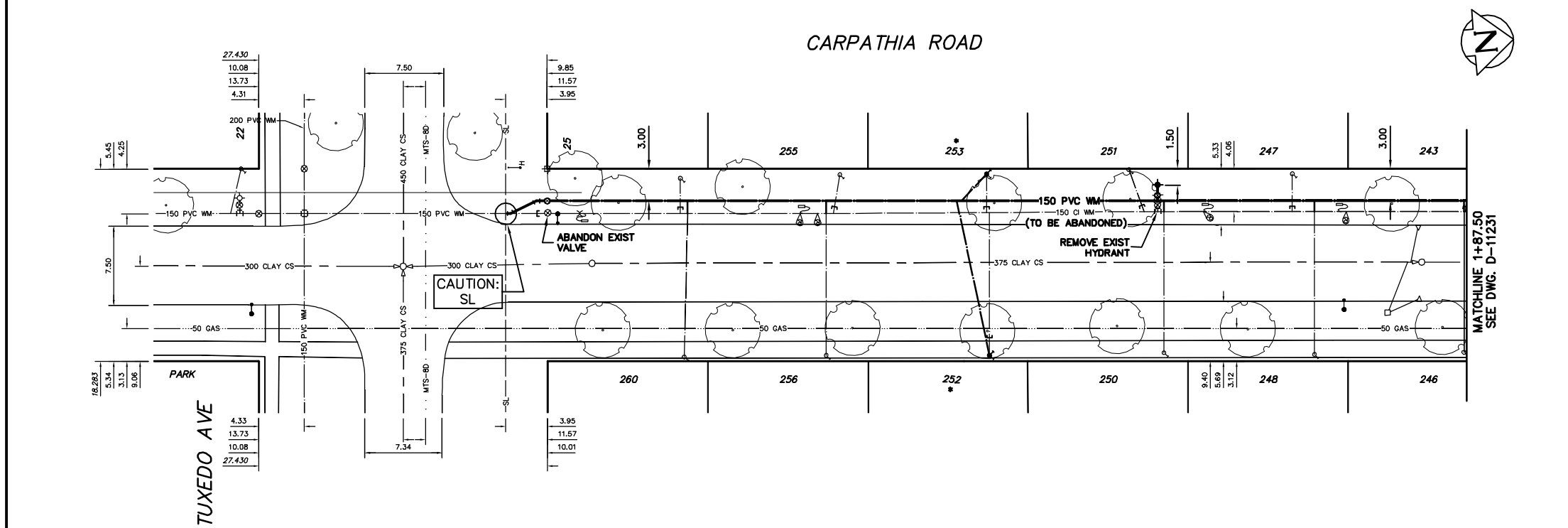


WATER SERVICE INFORMATION					
ADDRESS	SIZE(mm) & TYPE (STREET)	SIZE(mm) & TYPE (PROP)	SHORT & LONG MEASUREMENT	CORP. LOCATION	REMARKS
197 CARPATHIA RD	20 COPPER	20 COPPER	3.19 NSL HSE	5.9 N OF S/C	-
198 CARPATHIA RD	20 COPPER	20 COPPER	5.64 NSL WILLOW	0.8 N OF S/C	-
202 CARPATHIA RD	20 COPPER	25 COPPER	2.13 NSL HSE	0.1 N OF S/C	-
205 CARPATHIA RD	20 COPPER	25 COPPER	11.85 NSL WILLOW	0.25 N OF S/C	-
207 CARPATHIA RD	20 COPPER	20 COPPER	4.54 NSL WILLOW	0.3 S OF S/C	-
208 CARPATHIA RD	20 COPPER	20 COPPER	2.25 NSL HSE	0.3 S OF S/C	-
211 CARPATHIA RD	20 COPPER	20 COPPER	19.55 SSL WILLOW	0.65 N OF S/C	-
212 CARPATHIA RD	20 COPPER	20 COPPER	1.28 NSL HSE	0.38 S OF S/C	-
216 CARPATHIA RD	20 COPPER	20 COPPER	17.14 SSL WILLOW	0.65 N OF S/C	-
217 CARPATHIA RD	20 COPPER	20 COPPER	1.51 NSL HSE	0.65 N OF S/C	-
218 CARPATHIA RD	20 COPPER	20 COPPER	32.74 SSL WILLOW	0.65 N OF S/C	-
220 CARPATHIA RD	20 COPPER	20 COPPER	4.0 NSL HSE	0.65 N OF S/C	-
221 CARPATHIA RD	20 COPPER	20 COPPER	38.28 SSL WILLOW	0.65 N OF S/C	-
222 CARPATHIA RD	20 COPPER	20 COPPER	2.99 NSL HSE	0.65 N OF S/C	-
223 CARPATHIA RD	20 COPPER	20 COPPER	50.94 SSL WILLOW	0.65 N OF S/C	-
224 CARPATHIA RD	20 COPPER	20 COPPER	79.00 SSL WILLOW	0.65 N OF S/C	-
225 CARPATHIA RD	20 COPPER	20 COPPER	64.55 SSL WILLOW	0.65 N OF S/C	-
227 CARPATHIA RD	20 COPPER	20 COPPER	63.89 SSL WILLOW	0.65 N OF S/C	-
230 CARPATHIA RD	20 COPPER	20 COPPER	1.32 NSL HSE	0.3 N OF S/C	-
231 TUXEDO AVE	20 COPPER	20 COPPER	79.00 SSL WILLOW	0.65 N OF S/C	-
232 TUXEDO AVE	20 COPPER	20 COPPER	2.81 NSL HSE	0.65 N OF S/C	-
233 TUXEDO AVE	20 COPPER	20 COPPER	84.86 SSL WILLOW	0.65 N OF S/C	-
234 TUXEDO AVE	20 COPPER	20 COPPER	1.85 NSL HSE	0.33 S OF S/C	-
235 TUXEDO AVE	20 COPPER	20 COPPER	95.61 SSL WILLOW	0.65 N OF S/C	-
236 TUXEDO AVE	20 COPPER	20 COPPER	2.27 NSL HSE	0.65 N OF S/C	-
238 TUXEDO AVE	20 COPPER	20 COPPER	110.73 SSL WILLOW	0.65 N OF S/C	-
239 TUXEDO AVE	20 COPPER	20 COPPER	2.15 NSL HSE	0.65 N OF S/C	-
242 TUXEDO AVE	20 COPPER	20 COPPER	110.23 SSL WILLOW	0.65 N OF S/C	-
243 CARPATHIA RD	20 COPPER	20 COPPER	0.42 NSL HSE	0.65 N OF S/C	-
244 CARPATHIA RD	20 COPPER	20 COPPER	103.70 NSL TUXEDO	0.65 N OF S/C	-
245 CARPATHIA RD	20 COPPER	20 COPPER	103.22 NSL TUXEDO	0.65 N OF S/C	-
246 CARPATHIA RD	20 COPPER	20 COPPER	1.03 NSL HSE	0.4 S OF S/C	-
247 CARPATHIA RD	20 COPPER	20 COPPER	87.67 NSL TUXEDO	0.65 N OF S/C	-
248 CARPATHIA RD	20 COPPER	20 COPPER	2.06 NSL HSE	0.65 N OF S/C	-
249 CARPATHIA RD	20 COPPER	20 COPPER	87.20 NSL TUXEDO	0.65 N OF S/C	-
250 CARPATHIA RD	20 COPPER	20 COPPER	1.35 NSL HSE	0.65 N OF S/C	-
251 CARPATHIA RD	20 COPPER	20 COPPER	70.86 NSL TUXEDO	0.65 N OF S/C	-
252 CARPATHIA RD	20 COPPER	20 COPPER	1.23 NSL HSE	0.65 N OF S/C	-
253 CARPATHIA RD	20 COPPER	20 COPPER	72.99 NSL TUXEDO	0.65 N OF S/C	-
254 CARPATHIA RD	20 COPPER	20 COPPER	0.86 NSL HSE	0.65 N OF S/C	-
255 CARPATHIA RD	20 COPPER	20 COPPER	58.67 NSL TUXEDO	0.65 N OF S/C	-
256 CARPATHIA RD	20 COPPER	20 COPPER	3.68 NSL HSE	1.55 N OF S/C	-
257 CARPATHIA RD	20 COPPER	20 COPPER	55.33 NSL TUXEDO	0.65 N OF S/C	-
258 CARPATHIA RD	20 COPPER	20 COPPER	0.49 NSL HSE	0.65 N OF S/C	-
259 CARPATHIA RD	20 COPPER	20 COPPER	42.07 NSL TUXEDO	0.65 N OF S/C	-
260 CARPATHIA RD	20 COPPER	20 COPPER	0.42 NSL HSE	0.65 N OF S/C	-
261 CARPATHIA RD	20 COPPER	20 COPPER	41.80 NSL TUXEDO	0.65 N OF S/C	-
262 CARPATHIA RD	20 COPPER	20 COPPER	0.63 NSL HSE	0.6 S OF S/C	-
263 CARPATHIA RD	20 COPPER	20 COPPER	27.85 NSL TUXEDO	0.65 N OF S/C	-
264 CARPATHIA RD	20 COPPER	20 COPPER	1.19 NSL HSE	0.65 N OF S/C	-
265 CARPATHIA RD	20 COPPER	20 COPPER	26.33 NSL TUXEDO	0.65 N OF S/C	-
266 CARPATHIA RD	20 COPPER	20 COPPER	13.03 NSL TUXEDO	0.3 N OF S/C	-
267 CARPATHIA RD	20 COPPER	20 COPPER	2.14 NSL HSE	1.0 S OF S/C	SERVICED OFF CARPATHIA
268 CARPATHIA RD	20 COPPER	20 COPPER	1.75 SSL TUXEDO	0.65 N OF S/C	SERVICED OFF CARPATHIA
269 CARPATHIA RD	20 COPPER	20 COPPER	0.63 NSL HSE	0.65 N OF S/C	SERVICED OFF CARPATHIA
270 CARPATHIA RD	20 COPPER	20 COPPER	12.67 NSL TUXEDO	0.65 N OF S/C	SERVICED OFF CARPATHIA
271 CARPATHIA RD	20 COPPER	20 COPPER	0.25 NSL HSE	0.35 N OF S/C	SERVICED OFF CARPATHIA
272 CARPATHIA RD	20 COPPER	20 COPPER	1.93 SSL WILLOW	0.65 N OF S/C	-

NOTE: CHAINAGES SHOWN ARE ALONG W. R. OF CARPATHIA RD.



- CONSTRUCTION NOTES**
1. EXPOSE EXISTING WATERMAIN & CONFIRM INVERTS PRIOR TO CONSTRUCTION.
  2. CONFIRM LOCATION OF ALL SERVICES IN THE FIELD.
  3. INSTALL WATERMAIN BY TRENCHLESS METHODS.
  4. TRENCHES AND EXCAVATIONS WITHIN 1 METRE OF A PAVED AREA INCLUDING SIDEWALKS SHALL BE CLASS 3 BACKFILL.
  5. ALL MATERIALS SHALL CONFORM TO THE CITY OF WINNIPEG STANDARD CONSTRUCTION SPECIFICATIONS.
  6. MINIMUM COVER TO TOP OF WATERMAIN SHALL BE 2.4 m.
  7. REPLACE ALL EXISTING LEAD SERVICES FROM PROPOSED WATERMAIN TO R.
  8. NOTIFY ALL AFFECTED RESIDENTS AND BUSINESSES 24 HOURS IN ADVANCE OF ANY WATER SHUTDOWNS OR DISRUPTION OF SERVICE.
  9. EXCAVATIONS TO BE LOCATED AWAY FROM EXISTING TREES.

**METRIC**  
WHOLE NUMBERS INDICATE MILLIMETRES  
DECIMALIZED NUMBERS INDICATE METRES

NOTE: ALL VALVES TO BE INSTALLED COUNTERCLOCKWISE TO CLOSE

**WARNING**  
IF POWER EQUIPMENT OR EXPLOSIVES ARE TO BE USED FOR EXCAVATION ON THIS PROJECT THE CONTRACTOR MUST:  
1) NOTIFY THE GAS COMPANY OF THE PROPOSED LOCATION OF EXCAVATION.  
2) TAKE PRECAUTION TO AVOID DAMAGE TO GAS COMPANY INSTALLATIONS.  
SEE PROVINCIAL REGULATION 210/72 FOR DETAILS

200 WM	WATERMAIN	200 WM	SL, HYDRO	150 WM	WATERMAIN	150 WM
⊕	HYDRANT	⊕	MTS	⊕	HYDRANT	⊕
⊙	VALVE	⊙	TRAFFIC SIGNALS	⊙	VALVE	⊙
525 LDS	LAND DRAINAGE SEWER	525 LDS	GAS	50 GAS	300 LDS	LAND DRAINAGE SEWER
375 WWS	WASTEWATER SEWER	375 WWS	SURVEY BAR	250 WWS	250 WWS	WASTEWATER SEWER
○	MANHOLE	●	FENCE	⊕	⊕	PROFILE
□	CATCH BASIN	■	POLE - HYDRO, MTS	⊕	⊕	GROUND ABOVE PIPE
▽	CURB INLET	▽	CURB STOP	⊕	⊕	⊕ DITCH (NORTH & WEST)
▽	REDUCER	▽	GUY ANCHOR	⊕	⊕	⊕ DITCH (SOUTH & EAST)
X	COUPLER	X	LIGHT STANDARD	⊕	⊕	⊕ GUTTER (NORTH & WEST)
⊕	ANODE	⊕	TREE	⊕	⊕	⊕ GUTTER (SOUTH & EAST)
EXISTING	LEGEND-PLAN	PROPOSED	EXISTING	LEGEND-PLAN	PROPOSED	EXISTING
EXISTING	LEGEND-PROFILE	PROPOSED	EXISTING	LEGEND-PROFILE	PROPOSED	EXISTING

LOCATION APPROVED UNDERGROUND STRUCTURES

SUPV. U/G STRUCTURES COMMITTEE DATE

NOTE: LOCATION OF UNDERGROUND STRUCTURES AS SHOWN ARE BASED ON THE BEST INFORMATION AVAILABLE BUT NO GUARANTEE IS GIVEN THAT ALL EXISTING UTILITIES ARE SHOWN OR THAT THE GIVEN LOCATIONS ARE EXACT. CONFIRMATION OF EXISTENCE AND EXACT LOCATION OF ALL SERVICES MUST BE OBTAINED FROM THE INDIVIDUAL UTILITIES BEFORE PROCEEDING WITH CONSTRUCTION.

B.M. ELEV. FIELD BOOK #

POSTED TO LIS

NO. REVISIONS DATE BY

**CITY OF WINNIPEG WATER AND WASTE ENGINEERING DIVISION**

DESIGNED BY SGL CHECKED BY SC

DRAWN BY C/JH APPROVED BY KZ

HOR. SCALE 1:250 VERTICAL 1:50

RELEASED FOR CONSTRUCTION SIGNED BY K. ZUREK

DATE 2008 03 18 DATE 08/03/18

ENGINEER'S SEAL

ORIGINAL SIGNED BY S.R.J. COUNOYER 08/03/18

**THE CITY OF WINNIPEG WATER AND WASTE DEPARTMENT**

2008 WATERMAIN RENEWALS CONTRACT 2

**CARPATHIA ROAD**  
TUXEDO AVENUE TO 87.5 N OF TUXEDO AVENUE

SHEET 1 OF 17 CITY DRAWING NUMBER D-11230

FILENAME: D-11230.dwg PLOT DATE: 2008 03 18