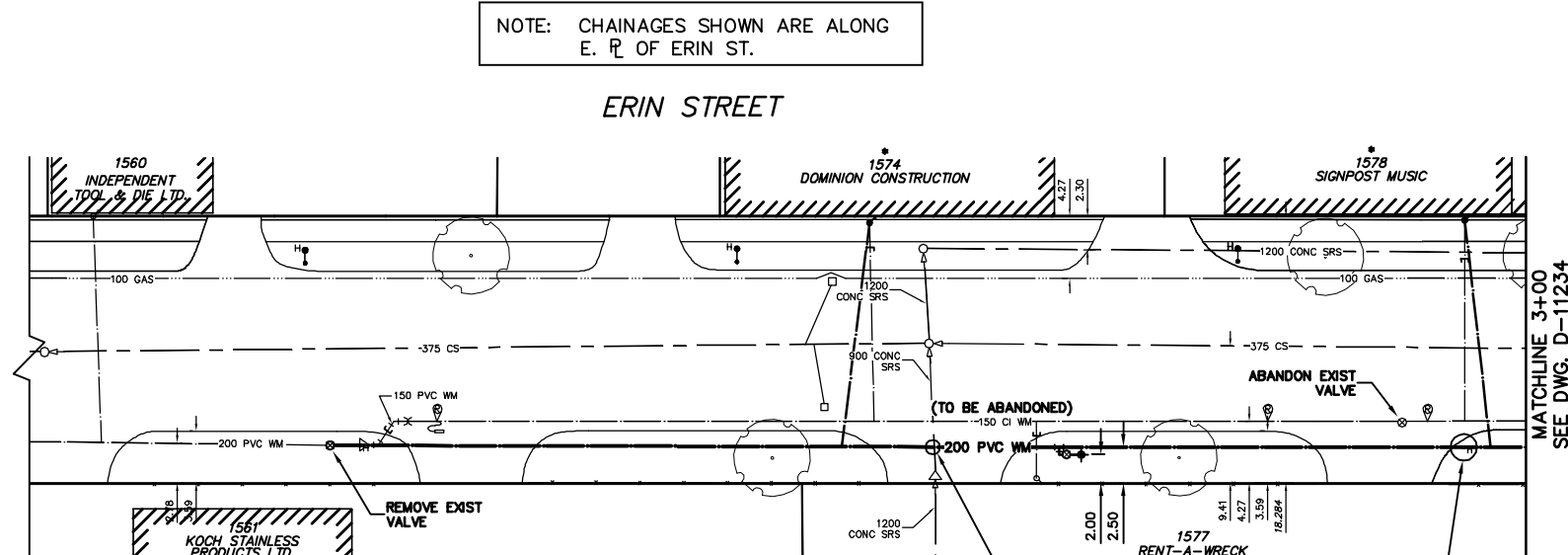
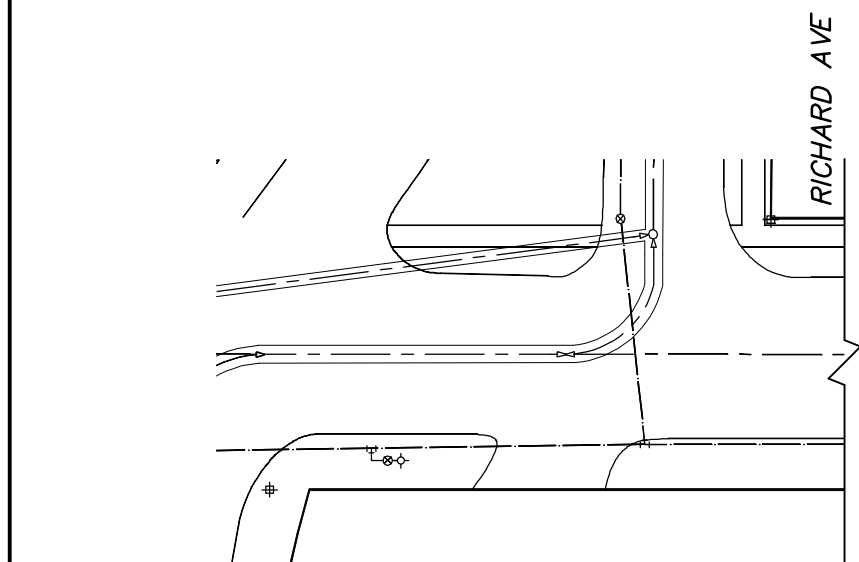


NOTE: CHAINAGES SHOWN ARE ALONG E. R. OF ERIN ST.



**WATER SERVICE INFORMATION**

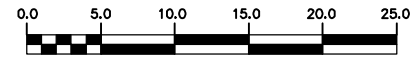
ADDRESS	SIZE(mm) & TYPE (STREET)	SIZE(mm) & TYPE (PROP)	SHORT & LONG MEASUREMENT	CORP. LOCATION	REMARKS
1560 ERIN ST INDUSTRIAL	20 COPPER	20 COPPER	2.40 NSL BLDG	101.87>NNL RICHARD	0.55 N OF S/C
1561 ERIN ST COMMERCIAL	25 COPPER	25 COPPER	3.96 NSL BLDG	0.60 N OF S/C	SERVICE NOT IN USE
1561 ERIN ST COMMERCIAL	25 COPPER	25 COPPER	11.60 SSL BLDG	93.08>NNL RICHARD	0.15 N OF S/C
1574 ERIN ST COMMERCIAL	20 COPPER	20 COPPER	9.91 NSL BLDG	154.98>NNL RICHARD	0.30 N OF S/C
1577 ERIN ST COMMERCIAL	25 COPPER	25 COPPER	0.35 NSL BLDG	166.55>NNL RICHARD	OPP S/C
1578 ERIN ST COMMERCIAL	20 COPPER	20 COPPER	3.05 SNL BLDG	195.71>NNL RICHARD	OPP S/C

\* SERVICES TO BE RENEWED TO R UPON CONFIRMATION BY THE CONTRACTOR OF EXISTING 1/2" COPPER OR LEAD SERVICE. OBTAIN APPROVAL FROM CONTRACT ADMINISTRATOR PRIOR TO RENEWAL.

FOR CONSTRUCTION NOTES SEE DRAWING D-11230

**METRIC**  
WHOLE NUMBERS INDICATE MILLIMETRES  
DECIMALIZED NUMBERS INDICATE METRES  
NOTE: ALL VALVES TO BE INSTALLED COUNTERCLOCKWISE TO CLOSE

**WARNING**  
IF POWER EQUIPMENT OR EXPLOSIVES ARE TO BE USED FOR EXCAVATION ON THIS PROJECT THE CONTRACTOR MUST:  
1) NOTIFY THE GAS COMPANY OF THE PROPOSED LOCATION OF EXCAVATION.  
2) TAKE PRECAUTION TO AVOID DAMAGE TO GAS COMPANY INSTALLATIONS.  
SEE PROVINCIAL REGULATION 210/72 FOR DETAILS



200 WM	WATERMAIN	200 WM	SL, HYDRO	150 WM	WATERMAIN	150 WM
⊕	HYDRANT	⊕	MTS	⊕	HYDRANT	⊕
⊙	VALVE	⊙	TRAFFIC SIGNALS	⊙	VALVE	⊙
525 LDS	LAND DRAINAGE SEWER	525 LDS	GAS	300 LDS	LAND DRAINAGE SEWER	300 LDS
375 WWS	WASTEWATER SEWER	375 WWS	SURVEY BAR	250 WWS	WASTEWATER SEWER	250 WWS
○	MANHOLE	●	FENCE	⊕	PROFILE	⊕
□	CATCH BASIN	■	POLE - HYDRO, MTS	⊕	GROUND ABOVE PIPE	⊕
▽	CURB INLET	▽	CURB STOP	⊕	⊕ DITCH (NORTH & WEST)	⊕
◁	REDUCER	◁	GUY ANCHOR	⊕	⊕ DITCH (SOUTH & EAST)	⊕
×	COUPLER	×	LIGHT STANDARD	⊕	⊕ GUTTER (NORTH & EAST)	⊕
⊕	ANODE	⊕	TREE	⊕	⊕ GUTTER (SOUTH & EAST)	⊕
EXISTING	LEGEND-PLAN	PROPOSED	EXISTING	LEGEND-PLAN	PROPOSED	EXISTING
				LEGEND-PROFILE	PROPOSED	

LOCATION APPROVED UNDERGROUND STRUCTURES	
SUPV. U/G STRUCTURES COMMITTEE	DATE
NOTE: LOCATION OF UNDERGROUND STRUCTURES AS SHOWN ARE BASED ON THE BEST INFORMATION AVAILABLE BUT NO GUARANTEE IS GIVEN THAT ALL EXISTING UTILITIES ARE SHOWN OR THAT THE GIVEN LOCATIONS ARE EXACT. CONFIRMATION OF EXISTENCE AND EXACT LOCATION OF ALL SERVICES MUST BE OBTAINED FROM THE INDIVIDUAL UTILITIES BEFORE PROCEEDING WITH CONSTRUCTION.	
B.M. ELEV.	FIELD BOOK #
POSTED TO LBS	
DESIGNED BY	SGL
CHECKED BY	SC
DRAWN BY	CJH
APPROVED BY	KZ
HOR. SCALE	1:250
VERTICAL SCALE	1:50
RELEASED FOR CONSTRUCTION	SIGNED BY K. ZUREK
NO.	REVISIONS
DATE	BY
DATE	2008 03 18
DATE	08/03/18

**CITY OF WINNIPEG**  
**WATER AND WASTE ENGINEERING DIVISION**

ENGINEER'S SEAL  
ORIGINAL SIGNED BY  
**S.R.J. COUNROYER**  
08/03/18

**THE CITY OF WINNIPEG**  
WATER AND WASTE DEPARTMENT

2008 WATERMAIN RENEWALS  
CONTRACT 2  
**ERIN STREET**  
100 N OF RICHARD AVENUE TO  
200 N OF RICHARD AVENUE

SHEET 4 OF 17  
CITY DRAWING NUMBER  
**D-11233**

FILE NAME: D-11233.dwg  
PLOT DATE: 2008 03 18