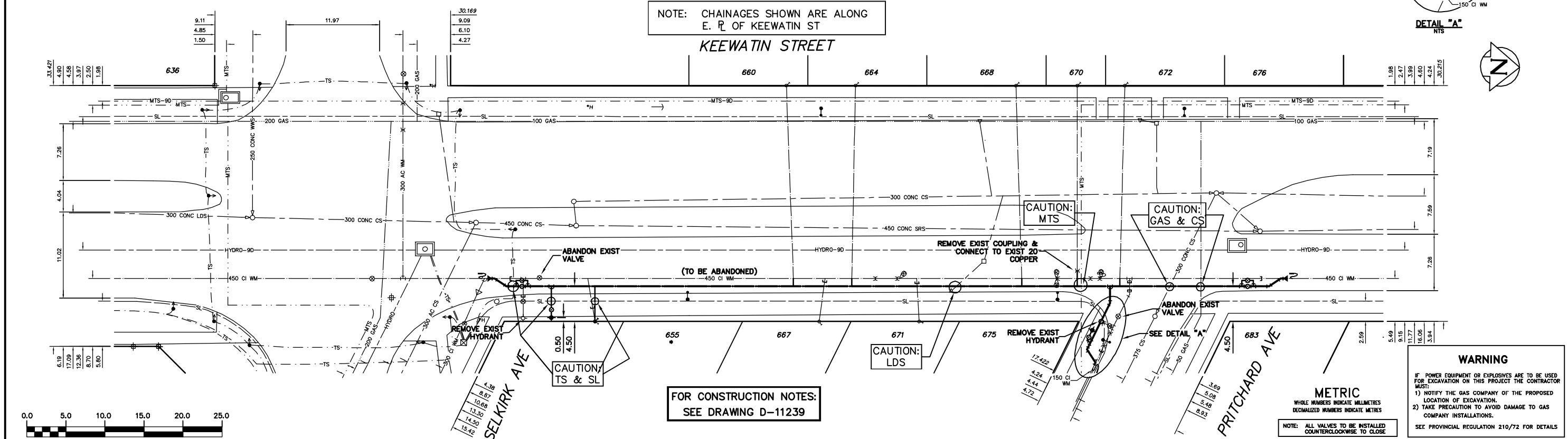


WATER SERVICE INFORMATION					
ADDRESS	SIZE(mm) & TYPE (STREET)	SIZE(mm) & TYPE (PROP)	SHORT & LONG MEASUREMENT	CORP. LOCATION	REMARKS
655 KEEWATIN ST	13	20	7.47 SSL HSE	0.91 S S/C	-
RESIDENTIAL	LEAD	COPPER	11.58>NNL SELKIRK W	0.91 N S/C	CPLG 35 E OF S/C
660 KEEWATIN ST	20	20	1.52 SSL OF HOUSE	-	-
RESIDENTIAL	COPPER	COPPER	42.98>NNL SELKIRK W	0.46 S S/C	-
664 KEEWATIN ST	20	20	4.72 N OF S/L BLDG	-	-
RESIDENTIAL	COPPER	COPPER	51.82>NNL SELKIRK W	0.76 N OF S/C	-
667 KEEWATIN ST	20	20	1.98 SSL OF HOUSE	-	-
RESIDENTIAL	COPPER	COPPER	33.22 SSL OF PRITCHARD	0.76 N OF S/C	-
668 KEEWATIN ST	20	20	1.22 SSL OF HOUSE	0.76 N OF S/C	REV. TAPPED
RESIDENTIAL	COPPER	COPPER	22.25 SSL OF PRITCHARD	0.61 S OF S/C	-
670 KEEWATIN ST	20	20	2.18 SL OF HSE	OPP C/S	REV. TAPPED
RESIDENTIAL	COPPER	COPPER	3.56 S/NPL	-	-
671 KEEWATIN ST	20	20	3.20 SSL OF HOUSE	2.74 S OF NHL	-
RESIDENTIAL	COPPER	COPPER	20.42 SSL OF PRITCHARD	0.61 S OF S/C	-
672 KEEWATIN ST	20	20	0.46 SSL OF HOUSE	-	-
RESIDENTIAL	COPPER	COPPER	2.74 N H KEEWATIN&PRITCHARD	0.61W OF S/C	-
675 KEEWATIN ST	20	20	3.81 WEL OF HOUSE	-	-
RESIDENTIAL	COPPER	COPPER	19.81 EEL OF KEEWATIN	-	-

* SERVICES TO BE RENEWED TO R UPON CONFIRMATION BY THE CONTRACTOR OF EXISTING 1/2" COPPER OR LEAD SERVICE. OBTAIN APPROVAL FROM CONTRACT ADMINISTRATOR PRIOR TO RENEWAL.

NOTE: CHAINAGES SHOWN ARE ALONG E. R. OF KEEWATIN ST

KEEWATIN STREET



FOR CONSTRUCTION NOTES: SEE DRAWING D-11239

WARNING

IF POWER EQUIPMENT OR EXPLOSIVES ARE TO BE USED FOR EXCAVATION ON THIS PROJECT THE CONTRACTOR MUST:

- 1) NOTIFY THE GAS COMPANY OF THE PROPOSED LOCATION OF EXCAVATION.
- 2) TAKE PRECAUTION TO AVOID DAMAGE TO GAS COMPANY INSTALLATIONS.

SEE PROVINCIAL REGULATION 210/72 FOR DETAILS

EXISTING	LEGEND-PLAN	PROPOSED	EXISTING	LEGEND-PLAN	PROPOSED	EXISTING	LEGEND-PROFILE	PROPOSED
200 WM	WATERMAIN	200 WM	SL, HYDRO	MTS	TRAFFIC SIGNALS	150 WM	WATERMAIN	150 WM
⊕	HYDRANT	⊕	50 GAS	50 GAS	300 LDS	LAND DRAINAGE SEWER	300 LDS	LAND DRAINAGE SEWER
⊙	VALVE	⊙	250 WWS	250 WWS	250 WWS	WASTEWATER SEWER	250 WWS	WASTEWATER SEWER
525 LDS	LAND DRAINAGE SEWER	525 LDS	50 GAS	50 GAS	300 LDS	LAND DRAINAGE SEWER	300 LDS	LAND DRAINAGE SEWER
375 WWS	WASTEWATER SEWER	375 WWS	250 WWS	250 WWS	250 WWS	WASTEWATER SEWER	250 WWS	WASTEWATER SEWER
○	MANHOLE	○	* * * *	FENCE	⊕	PROFILE	⊕	PROFILE
▽	CATCH BASIN	▽	* H * T	POLE - HYDRO, MTS	⊕	GROUND ABOVE PIPE	⊕	GROUND ABOVE PIPE
▽	CURB INLET	▽	⊕	CURB STOP	⊕	⊕ DITCH (NORTH & WEST)	⊕	⊕ DITCH (NORTH & WEST)
▽	REDUCER	▽	⊕	GUY ANCHOR	⊕	⊕ DITCH (SOUTH & EAST)	⊕	⊕ DITCH (SOUTH & EAST)
X	COUPLER	X	⊕	LIGHT STANDARD	⊕	⊕ GUTTER (NORTH & EAST)	⊕	⊕ GUTTER (NORTH & EAST)
⊕	ANODE	⊕	⊕	TREE	⊕	⊕ GUTTER (SOUTH & EAST)	⊕	⊕ GUTTER (SOUTH & EAST)

LOCATION APPROVED	B.M. ELEV.	FIELD BOOK #:
UNDERGROUND STRUCTURES	POSTED TO LBS	
SUPV. U/G STRUCTURES COMMITTEE	DATE	
NOTE:		
LOCATION OF UNDERGROUND STRUCTURES AS SHOWN ARE BASED ON THE BEST INFORMATION AVAILABLE BUT NO GUARANTEE IS GIVEN THAT ALL EXISTING UTILITIES ARE SHOWN OR THAT THE GIVEN LOCATIONS ARE EXACT. CONFIRMATION OF EXISTENCE AND EXACT LOCATION OF ALL SERVICES MUST BE OBTAINED FROM THE INDIVIDUAL UTILITIES BEFORE PROCEEDING WITH CONSTRUCTION.		
NO. REVISIONS	DATE	BY

CITY OF WINNIPEG
WATER AND WASTE
ENGINEERING DIVISION

DESIGNED BY: SGL
CHECKED BY: SC

DRAWN BY: CJH
APPROVED BY: KZ

HOR. SCALE: 1:250
VERTICAL: 1:50

RELEASED FOR CONSTRUCTION
SIGNED BY K. ZUREK

DATE: 2008 03 18
DATE: 08/03/18

ENGINEER'S SEAL
ORIGINAL SIGNED BY: S.R.J. COURNOYER
08/03/18

THE CITY OF WINNIPEG
WATER AND WASTE DEPARTMENT

2008 WATERMAIN RENEWALS
CONTRACT 2
KEEWATIN STREET
SELKIRK AVENUE TO
PRITCHARD AVENUE

SHEET 8 OF 17
CITY DRAWING NUMBER
D-11237