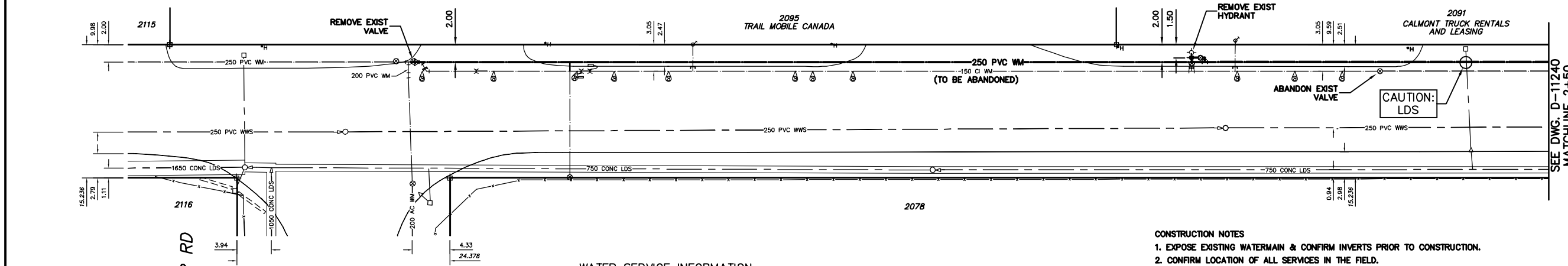


NOTE: CHAINAGES SHOWN ARE ALONG N. R. OF LOGAN AVE.

LOGAN AVENUE



SEE DWG. D-11240 MATCHLINE 2+50

WATER SERVICE INFORMATION

ADDRESS	SIZE(mm) & TYPE (STREET)	SIZE(mm) & TYPE (PROP)	SHORT & LONG MEASUREMENT	CORP. LOCATION	REMARKS
2078 LOGAN AVE COMMERCIAL	50 COPPER	50 COPPER	12.80 EWL BLDG	OPP S/C	-
2078 LOGAN AVE SPRINKLER	200 PVC	200 PVC	13.68 EEL BANNISTER	OPP VALVE	SERVICED OFF BANNISTER
2091 LOGAN AVE COMMERCIAL	-	-	9.43 SBL BLDG	OPP S/C	-
2091 LOGAN AVE COMMERCIAL	-	-	35.81 SBL LOGAN	OPP S/C	-
2095 LOGAN AVE COMMERCIAL	-	-	11.82 WEL BLDG	OPP S/C	-
2095 LOGAN AVE COMMERCIAL	-	-	89.75 EEL BANNISTER	OPP S/C	-
2095 LOGAN AVE COMMERCIAL	-	-	13.44 WEL BLDG	OPP S/C	-
2095 LOGAN AVE COMMERCIAL	-	-	27.70 EEL BANNISTER	OPP S/C	-

* SERVICES TO BE RENEWED TO R UPON CONFIRMATION BY THE CONTRACTOR OF EXISTING 1/2" COPPER OR LEAD SERVICE. OBTAIN APPROVAL FROM CONTRACT ADMINISTRATOR PRIOR TO RENEWAL.

CONSTRUCTION NOTES

1. EXPOSE EXISTING WATERMAIN & CONFIRM INVERTS PRIOR TO CONSTRUCTION.
2. CONFIRM LOCATION OF ALL SERVICES IN THE FIELD.
3. INSTALL WATERMAIN BY TRENCHLESS METHODS.
4. TRENCHES AND EXCAVATIONS WITHIN 1 METRE OF A PAVED AREA INCLUDING SIDEWALKS SHALL BE CLASS 3 BACKFILL.
5. ALL MATERIALS SHALL CONFORM TO THE CITY OF WINNIPEG STANDARD CONSTRUCTION SPECIFICATIONS.
6. MINIMUM COVER TO TOP OF WATERMAIN SHALL BE 2.4 m.
7. REPLACE ALL EXISTING LEAD SERVICES FROM PROPOSED WATERMAIN TO R.
8. NOTIFY ALL AFFECTED RESIDENTS AND BUSINESSES 24 HOURS IN ADVANCE OF ANY WATER SHUTDOWNS OR DISRUPTION OF SERVICE.
9. EXCAVATIONS TO BE LOCATED AWAY FROM EXISTING TREE'S.

METRIC

WHOLE NUMBERS INDICATE MILLIMETRES
DECIMALIZED NUMBERS INDICATE METRES

NOTE: ALL VALVES TO BE INSTALLED COUNTERCLOCKWISE TO CLOSE

WARNING

IF POWER EQUIPMENT OR EXPLOSIVES ARE TO BE USED FOR EXCAVATION ON THIS PROJECT THE CONTRACTOR MUST:
1) NOTIFY THE GAS COMPANY OF THE PROPOSED LOCATION OF EXCAVATION.
2) TAKE PRECAUTION TO AVOID DAMAGE TO GAS COMPANY INSTALLATIONS.
SEE PROVINCIAL REGULATION 210/72 FOR DETAILS



EXISTING	LEGEND-PLAN	PROPOSED	EXISTING	LEGEND-PLAN	PROPOSED	EXISTING	LEGEND-PROFILE	PROPOSED
200 WM	WATERMAIN	200 WM	SL, HYDRO	MTS	50 GAS	150 WM	WATERMAIN	150 WM
525 LDS	LAND DRAINAGE SEWER	525 LDS	TRAFFIC SIGNALS	GAS	300 LDS	HYDRANT	HYDRANT	300 LDS
375 WWS	WASTEWATER SEWER	375 WWS	SURVEY BAR	50 GAS	250 WWS	VALVE	VALVE	250 WWS
○	MANHOLE	●	FENCE	50 GAS	250 WWS	☉	☉	250 WWS
□	CATCH BASIN	■	POLE - HYDRO, MTS	50 GAS	250 WWS	⊕	⊕	250 WWS
▽	CURB INLET	▽	CURB STOP	50 GAS	250 WWS	⊖	⊖	250 WWS
∇	REDUCER	∇	GUY ANCHOR	50 GAS	250 WWS	⊗	⊗	250 WWS
X	COUPLER	X	LIGHT STANDARD	50 GAS	250 WWS	⊘	⊘	250 WWS
⊕	ANODE	⊕	TREE	50 GAS	250 WWS	⊙	⊙	250 WWS

LOCATION APPROVED	DATE
UNDERGROUND STRUCTURES	
SUPV. U/G STRUCTURES COMMITTEE	
NOTE:	
LOCATION OF UNDERGROUND STRUCTURES AS SHOWN ARE BASED ON THE BEST INFORMATION AVAILABLE BUT NO GUARANTEE IS GIVEN THAT ALL EXISTING UTILITIES ARE SHOWN OR THAT THE GIVEN LOCATIONS ARE EXACT. CONFIRMATION OF EXISTENCE AND EXACT LOCATION OF ALL SERVICES MUST BE OBTAINED FROM THE INDIVIDUAL UTILITIES BEFORE PROCEEDING WITH CONSTRUCTION.	

DESIGNED BY	CHECKED BY	DATE
SGL	SC	08/03/18
DRAWN BY	APPROVED BY	
CJH	KZ	
HOR. SCALE	VERTICAL SCALE	FILE NAME
1:250	1:50	D-11239.dwg
1:50		PLOT DATE
		2008 03 18

THE CITY OF WINNIPEG
WATER AND WASTE DEPARTMENT

2008 WATERMAIN RENEWALS
CONTRACT 2
LOGAN AVENUE
BANNISTER ROAD TO
125 E OF BANNISTER ROAD

ORIGINAL SIGNED BY
S.R.J. COURNOYER
08/03/18

ENGINEER'S SEAL
SIGNED BY K. ZUREK
08/03/18

SHEET 10 OF 17
CITY DRAWING NUMBER
D-11239