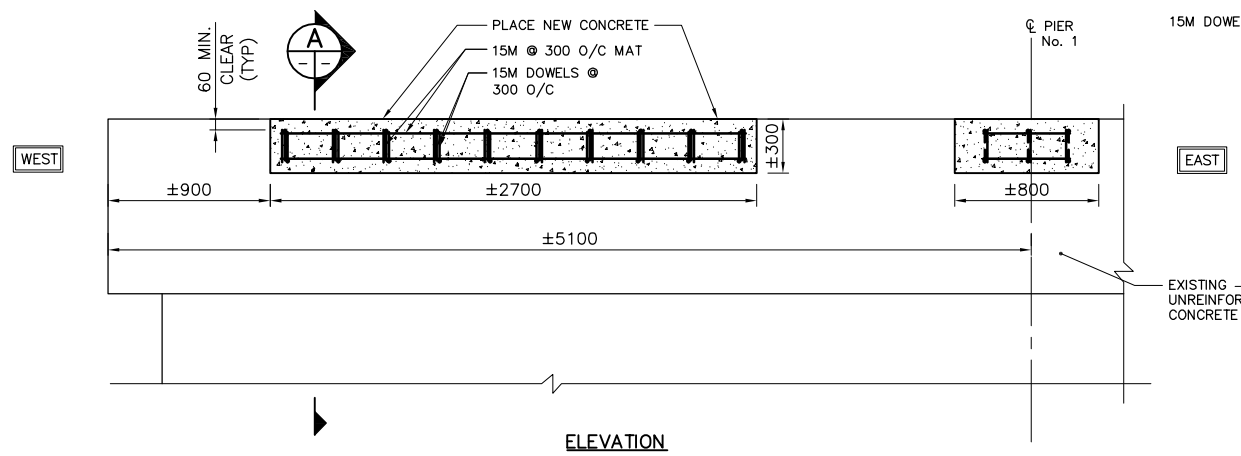
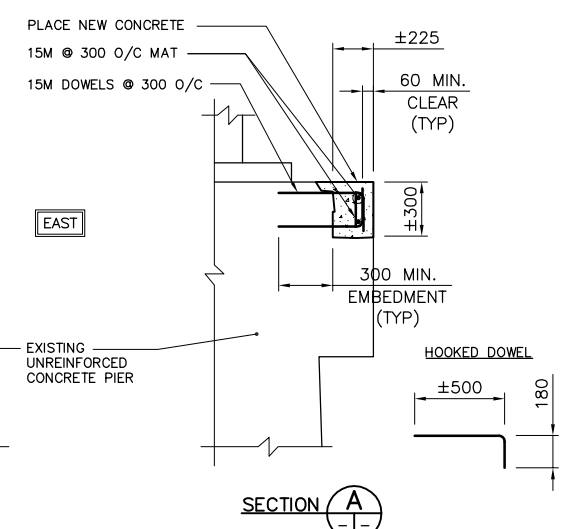


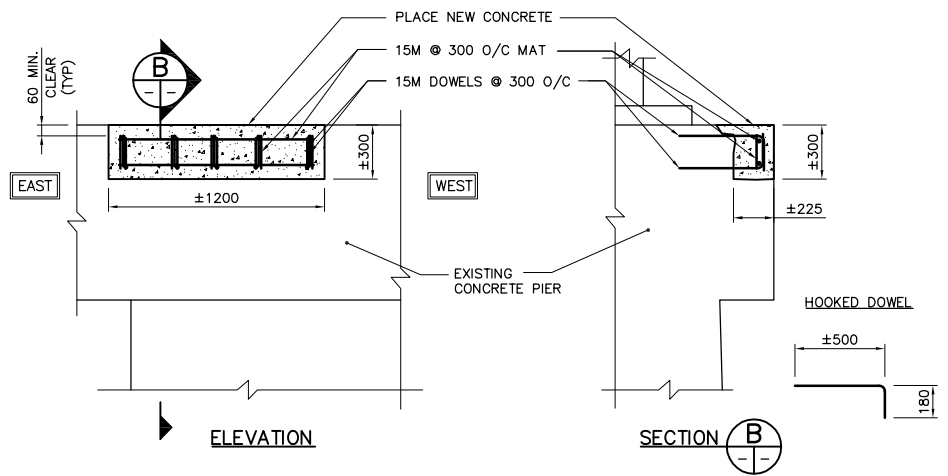
PLAN VIEW
1:300



① PIER No. 1 REPAIR DETAILS
SCALE 1:20



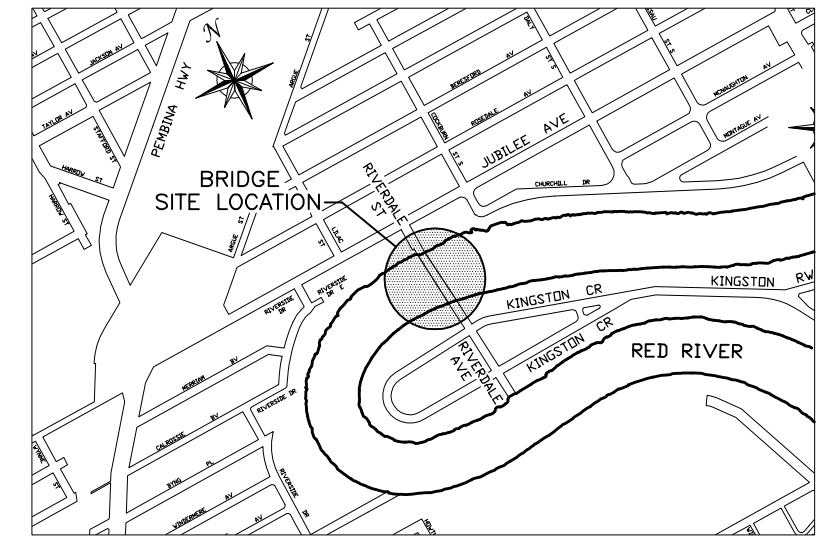
SECTION A



② PIER No. 3 REPAIR DETAILS
SCALE 1:20

SECTION B

NOTES:
 1. ALL REINFORCING TO BE 15M @ 300 O/C MAXIMUM, UNLESS OTHERWISE NOTED.
 2. ALL DOWELS TO HAVE 300 EMBEDMENT.
 3. ALL REINFORCING TO HAVE 60mm CLEAR COVER, UNLESS OTHERWISE NOTED.



LOCATION PLAN
N.T.S.

SCOPE OF WORK:

- REPAIR PIER CAP AT PIER No. 1
- REPAIR PIER CAP AT PIER No. 3

GENERAL NOTES:

- ALL DIMENSIONS TO BE VERIFIED BY CONTRACTOR ON SITE.
- CONTRACTOR TO CONTACT CONTRACT ADMINISTRATOR IMMEDIATELY IF THERE ARE ANY DISCREPANCIES.
- AFTER REMOVAL OF CONCRETE, DRILLING OF HOLES AND ROUGHENING OF CONCRETE SURFACE, ALL REMAINING CONCRETE AREAS SHALL BE CLEANED BY GRIT BLASTING.
- REMOVE CONCRETE FROM REPAIR AREAS TO A DEPTH OF ±225mm. SAWCUT PERIMETER TO A MINIMUM DEPTH OF 25mm. SIZE AND LOCATION OF REPAIR AREAS TO BE VERIFIED BY THE CONTRACT ADMINISTRATOR IN THE FIELD.
- DO NOT DISPOSE OF ANY MATERIAL WITHIN THE RIVER OR IN ANY OTHER SUBMERGED PORTION OF THE RIVER.
- HOLES FOR DOWELS SHALL BE DRILLED 2mm LARGER THAN THE DIAMETER OF THE REINFORCING.
- EPOXY GROUT SHALL BE USED FOR DOWEL EMBEDMENT AS PER CITY OF WINNIPEG STANDARD SPECIFICATIONS.
- CONCRETE REPAIR MATERIAL SHALL BE A CONCRETE REPAIR MORTAR. REFER TO SPECIFICATION FOR DETAILS. ALLOW CONCRETE TO CURE FOR 7 DAYS BEFORE FORM REMOVAL.
- DO NOT UNDERCUT BEARING PLATE BY MORE THAN 25mm UNLESS OTHERWISE APPROVED BY THE CONTRACT ADMINISTRATOR.

B.M. ELEV.	DESIGNED BY DDW			
	DRAWN BY DDW/tik			
	CHECKED BY JSB		CONSULTANT PROJECT NO. 089072	CITY DRAWING NUMBER B131-08-01 SHEET 4 OF 7 BID OPPORTUNITY 571-2008
	APPROVED BY			
	HOR. SCALE AS NOTED			
	VERTICAL AS NOTED			
0 ISSUED FOR TENDER 07/31/08 JSB	DATE BY	DATE	JULY 2008	
NO. REVISIONS	DATE	BY	DATE	JULY 31, 2008

4:00:00 ACAD FILE: G:\CAD\089072\Cont\A\Elm Park Bridge\Elm Park Pedestrian Bridge.dwg 6/18/2008