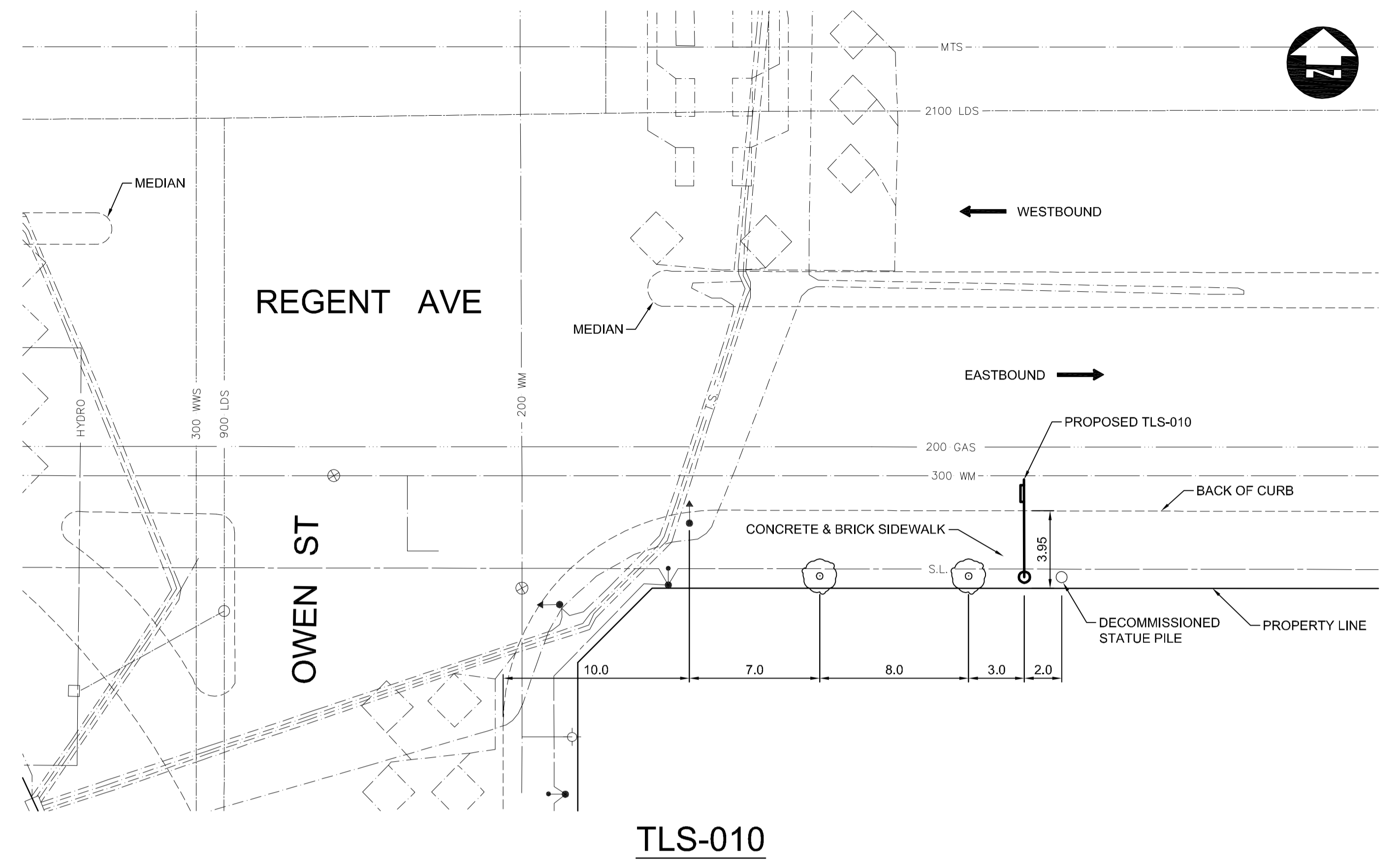
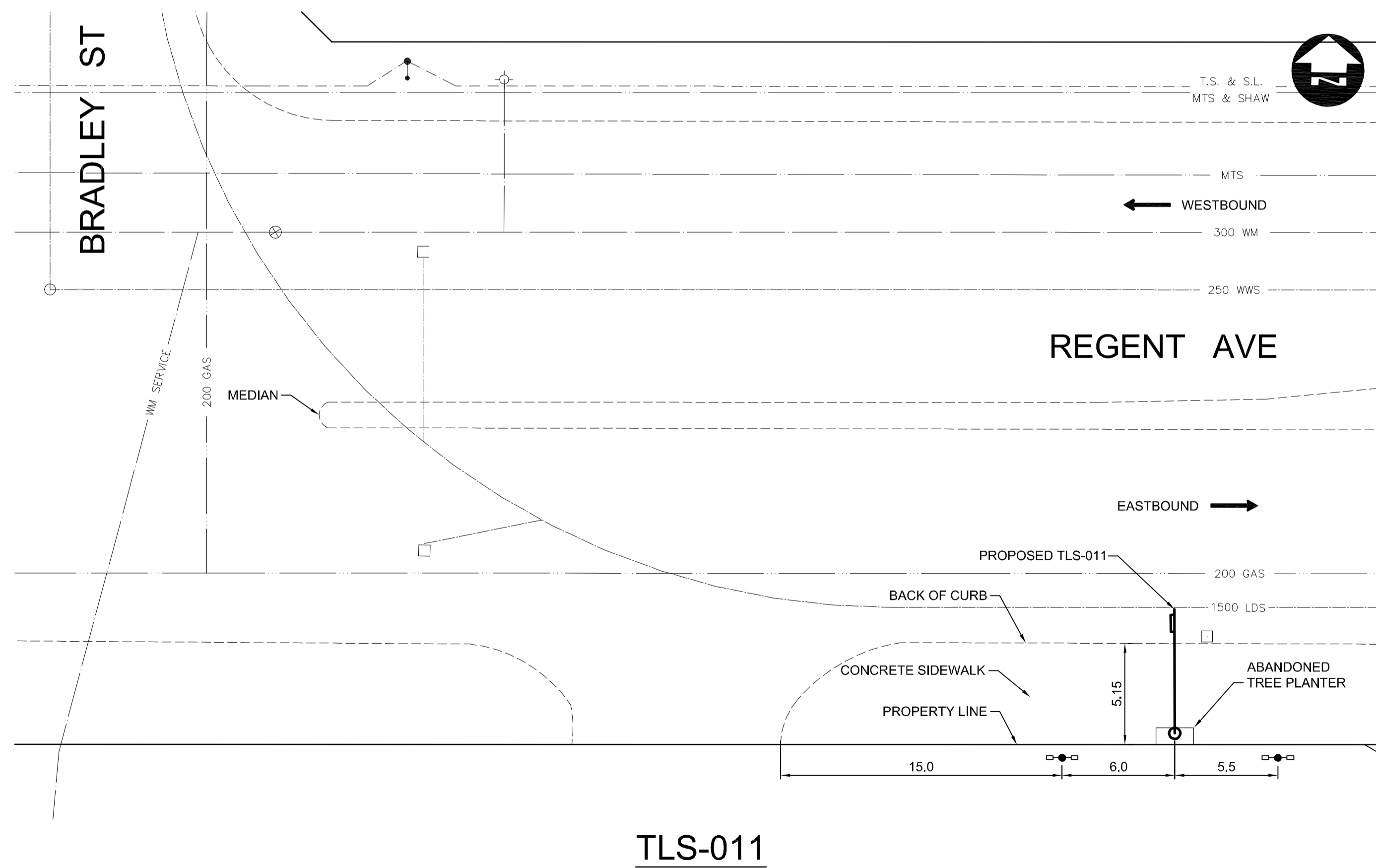


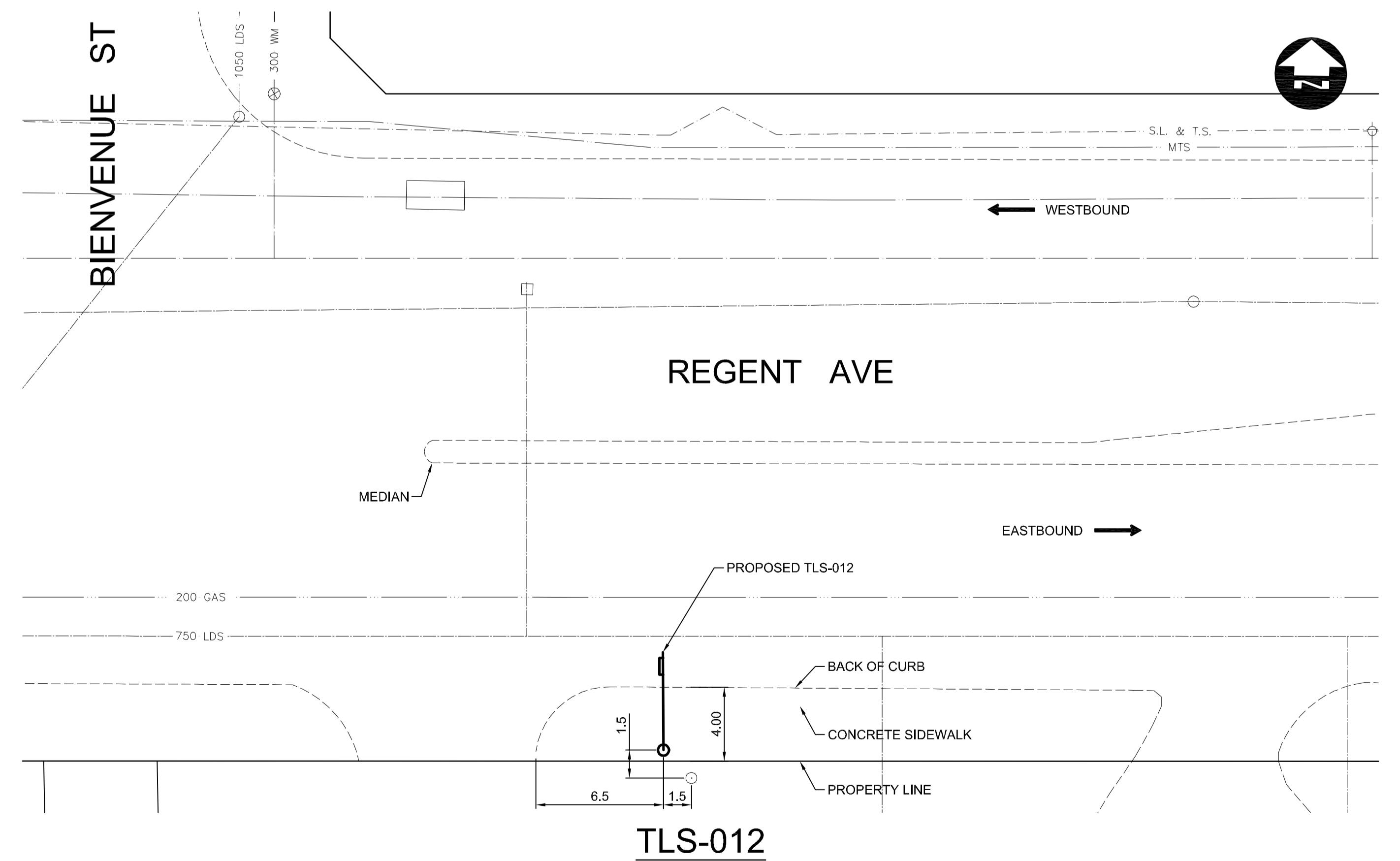
TLS-009



TLS-010



TLS-011



TLS-012

150 mm W.M.	WATER MAIN	150 mm W.M.	HYDRO	150 mm W.M.
⊕	HYDRANT	⊕	M.T.S.	⊕
⊗	VALVE	⊗	CONCRETE	⊗
300 mm L.D.S.	LAND DRAINAGE SEWER	300 mm L.D.S.	ASPHALT	300 mm L.D.S.
250 mm W.W.S.	WASTE WATER SEWER	250 mm W.W.S.	PLANING	250 mm W.W.S.
○	MANHOLE	●	SIDEWALK	⊗
□	CATCH BASIN	■	PAVING STONES	⊗
▽	CURB INLET	▽	PARTIAL DEPTH REPAIR	⊗
⊕	JUNCTIONS	⊕	PROPERTY LINE	⊕
⊕	CULVERT	⊕	SURVEY BAR	⊕
⊕	GAS	⊕	PARAPLEGIC RAMP	⊕
EXISTING	LEGEND-PLAN	PROPOSED	EXISTING	LEGEND-PLAN
				PROPOSED
				EXISTING

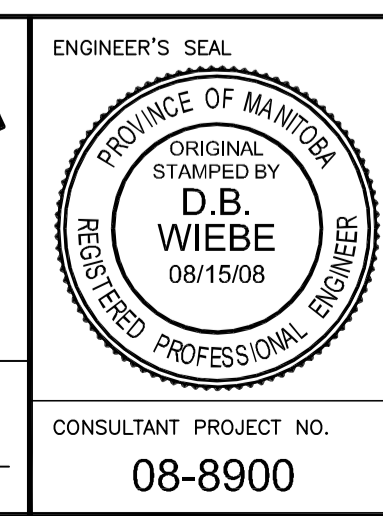
**UNDERGROUND STRUCTURES**

DATE

NOTE:  
LOCATION OF UNDERGROUND STRUCTURES AS SHOWN ARE BASED ON THE BEST INFORMATION AVAILABLE, BUT NO GUARANTEE IS GIVEN THAT ALL EXISTING UTILITIES ARE SHOWN OR THAT THE GIVEN LOCATIONS ARE EXACT. CONFIRMATION OF EXISTENCE AND EXACT LOCATION OF ALL SERVICES MUST BE OBTAINED FROM THE INDIVIDUAL UTILITIES BEFORE PROCEEDING WITH CONSTRUCTION.

B.M. ELEV.					
DESIGNED BY	RJT				
DRAWN BY	TJH				
CHECKED BY	DBW				
APPROVED BY					
HOR. SCALE	1 : 200				
VERTICAL					
NO.	REVISIONS	DATE	BY	DATE	
2	ISSUED FOR TENDER	08/15/08	TJH		
1	ISSUED FOR REVIEW	07/29/08	TJH		

RELEASED FOR CONSTRUCTION	DATE



**THE CITY OF WINNIPEG**  
TRANSIT DEPARTMENT

ON STREET TRANSIT  
PRIORITY IMPROVEMENTS - PHASE 2  
REGENT AVENUE (3 OF 3)

CITY DRAWING NUMBER  
SHEET 5 OF 11

CONSULTANT PROJECT NO.  
08-8900