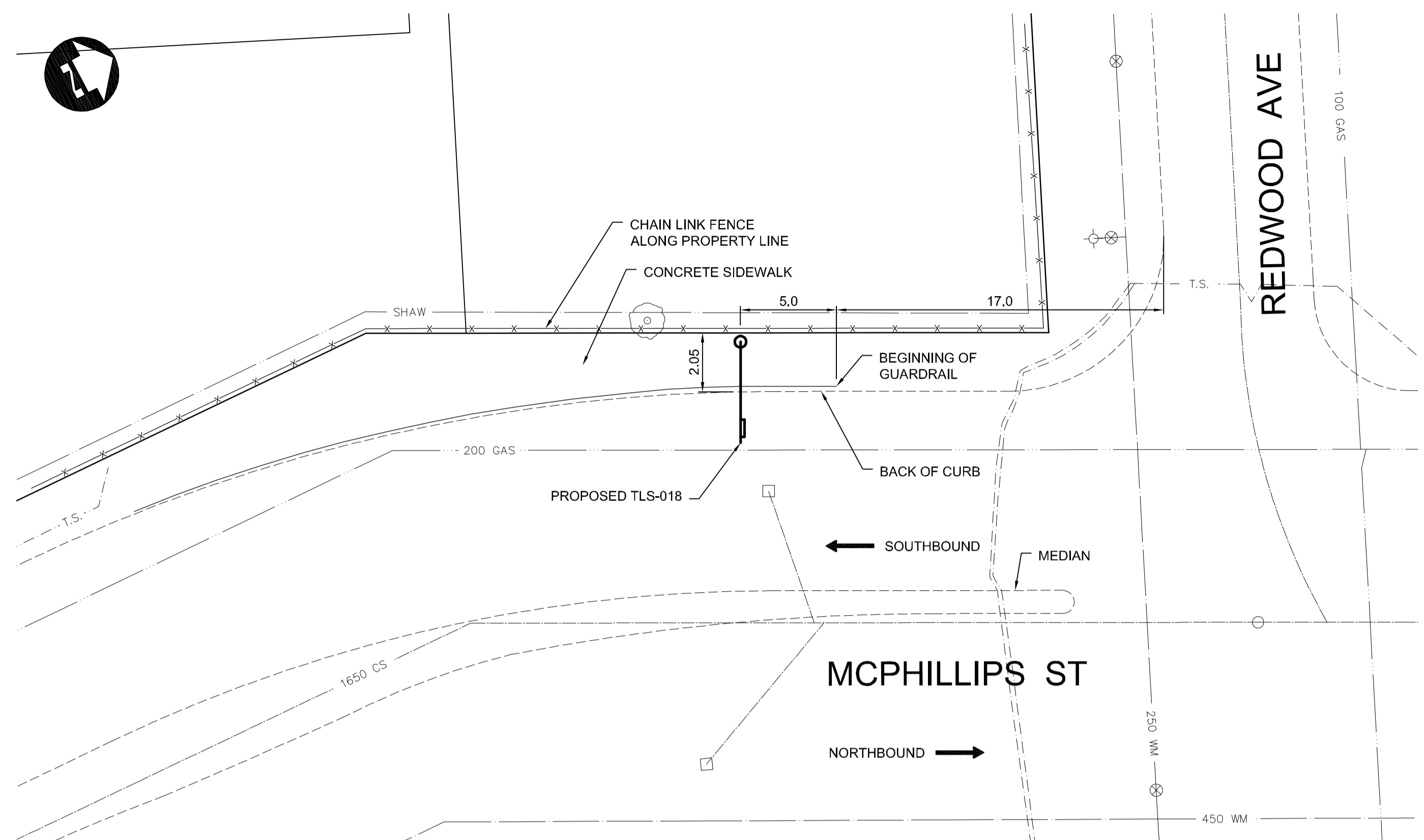
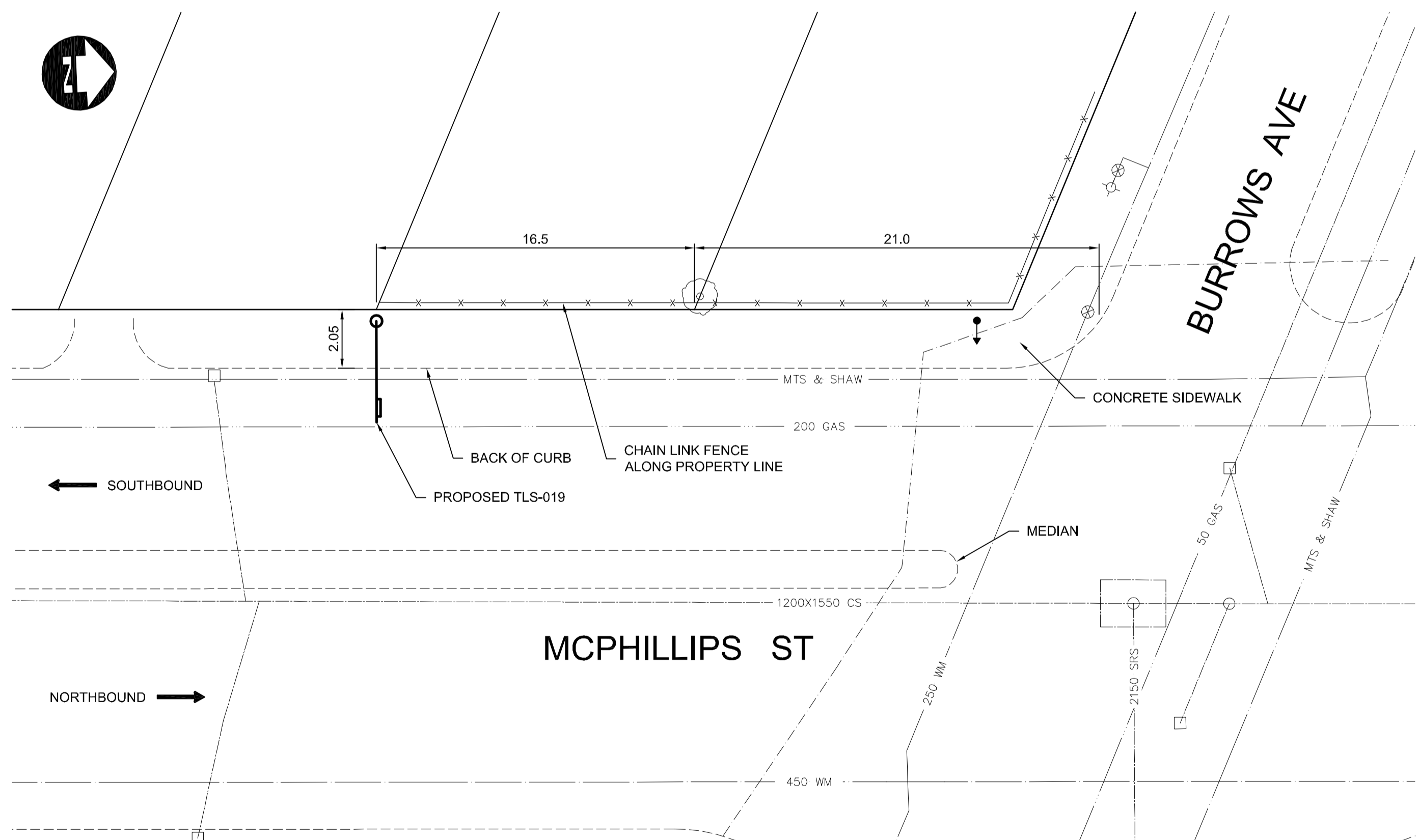


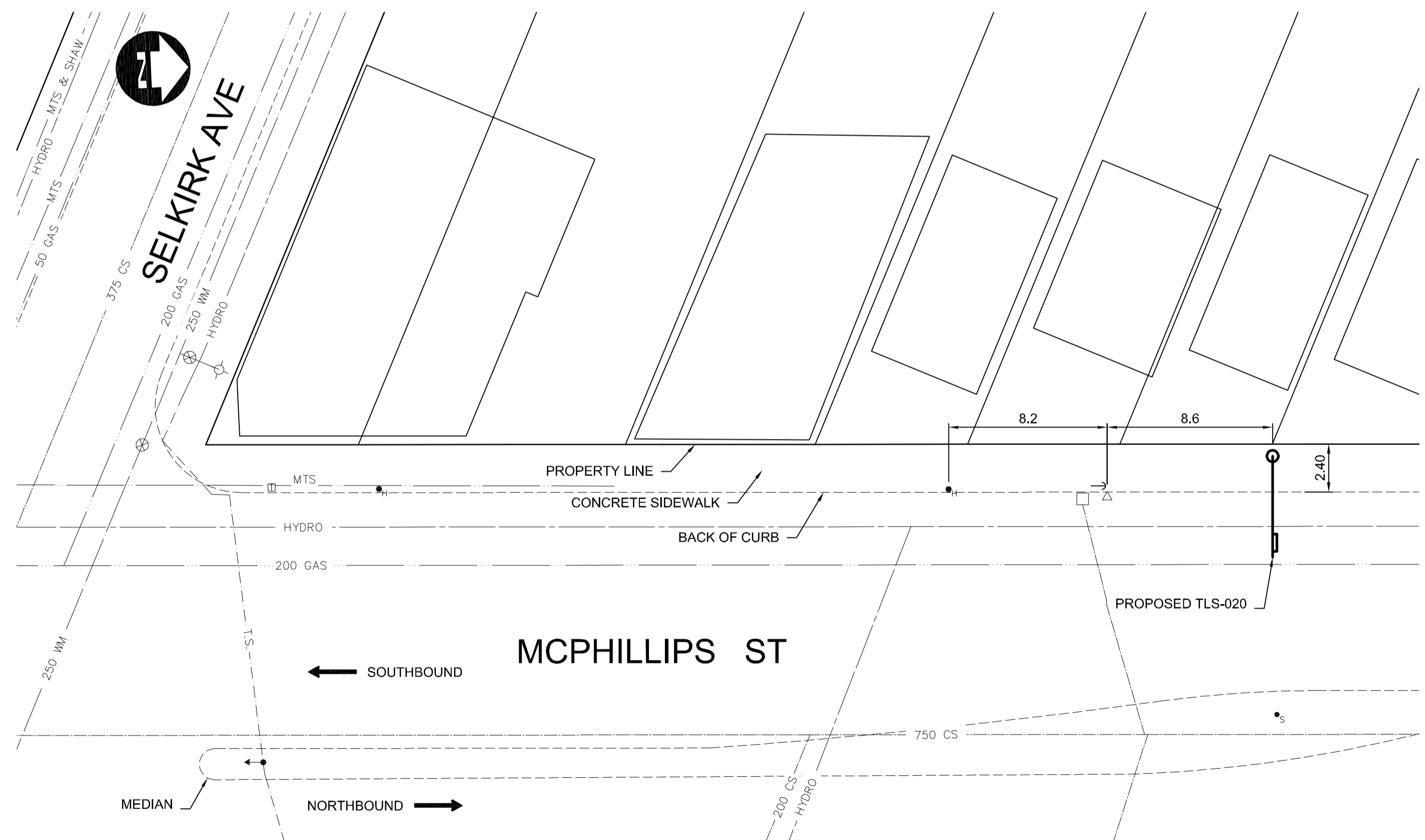
TLS-017



TLS-018



TLS-019



TLS-020

| | | | | | |
|---------------|---------------------|---------------|----------------------|-------------|------------------------|
| 150 mm W.M. | WATER MAIN | 150 mm W.M. | HYDRO | 150 mm W.M. | UNDERGROUND STRUCTURES |
| ⊕ | HYDRANT | ⊕ | M.T.S. | --- | |
| ⊗ | VALVE | ⊗ | CONCRETE | --- | |
| 300 mm L.D.S. | LAND DRAINAGE SEWER | 300 mm L.D.S. | ASPHALT | --- | |
| 250 mm W.W.S. | WASTE WATER SEWER | 250 mm W.W.S. | PLANING | --- | |
| ○ | MANHOLE | ● | SIDEWALK | --- | |
| □ | CATCH BASIN | ■ | PAVING STONES | --- | |
| ▽ | CURB INLET | ▼ | PARTIAL DEPTH REPAIR | --- | |
| --- | JUNCTIONS | --- | PROPERTY LINE | --- | |
| --- | CULVERT | --- | SURVEY BAR | --- | |
| --- | GAS | --- | PARAPLEGIC RAMP | --- | |
| --- | EXISTING | --- | LEGEND-PLAN | --- | |
| --- | PROPOSED | --- | EXISTING | --- | |

NOTE:
 LOCATION OF UNDERGROUND STRUCTURES AS SHOWN ARE BASED ON THE BEST INFORMATION AVAILABLE, BUT NO GUARANTEE IS GIVEN THAT ALL EXISTING UTILITIES ARE SHOWN OR THAT THE GIVEN LOCATIONS ARE EXACT. CONFIRMATION OF EXISTENCE AND EXACT LOCATION OF ALL SERVICES MUST BE OBTAINED FROM THE INDIVIDUAL UTILITIES BEFORE PROCEEDING WITH CONSTRUCTION.

| | | |
|------------|-------------------|--------------|
| B.M. ELEV. | DESIGNED BY | RJT |
| | DRAWN BY | TJH |
| | CHECKED BY | DBW |
| | APPROVED BY | |
| | HOR. SCALE | 1 : 200 |
| | VERTICAL | |
| 2 | ISSUED FOR TENDER | 08/15/08 TJH |
| 1 | ISSUED FOR REVIEW | 07/29/08 TJH |
| NO. | REVISIONS | DATE BY |

RELEASSED FOR CONSTRUCTION



ENGINEER'S SEAL
 PROVINCE OF MANITOBA
 ORIGINAL STAMPED BY
 D.B. WIEBE
 08/15/08
 REGISTERED PROFESSIONAL ENGINEER
 CONSULTANT PROJECT NO.
 08-8900

THE CITY OF WINNIPEG
 TRANSIT DEPARTMENT

ON STREET TRANSIT
 PRIORITY IMPROVEMENTS - PHASE 2

MCPHILLIPS STREET (2 OF 3)

CITY DRAWING NUMBER
 SHEET 7 OF 11