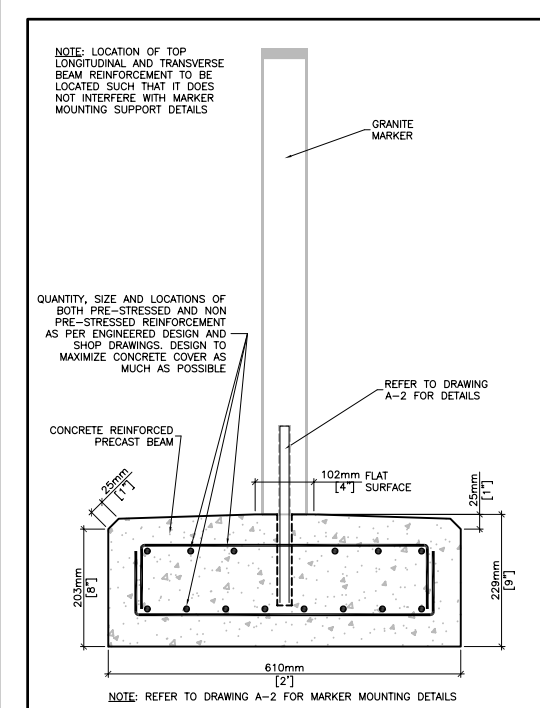
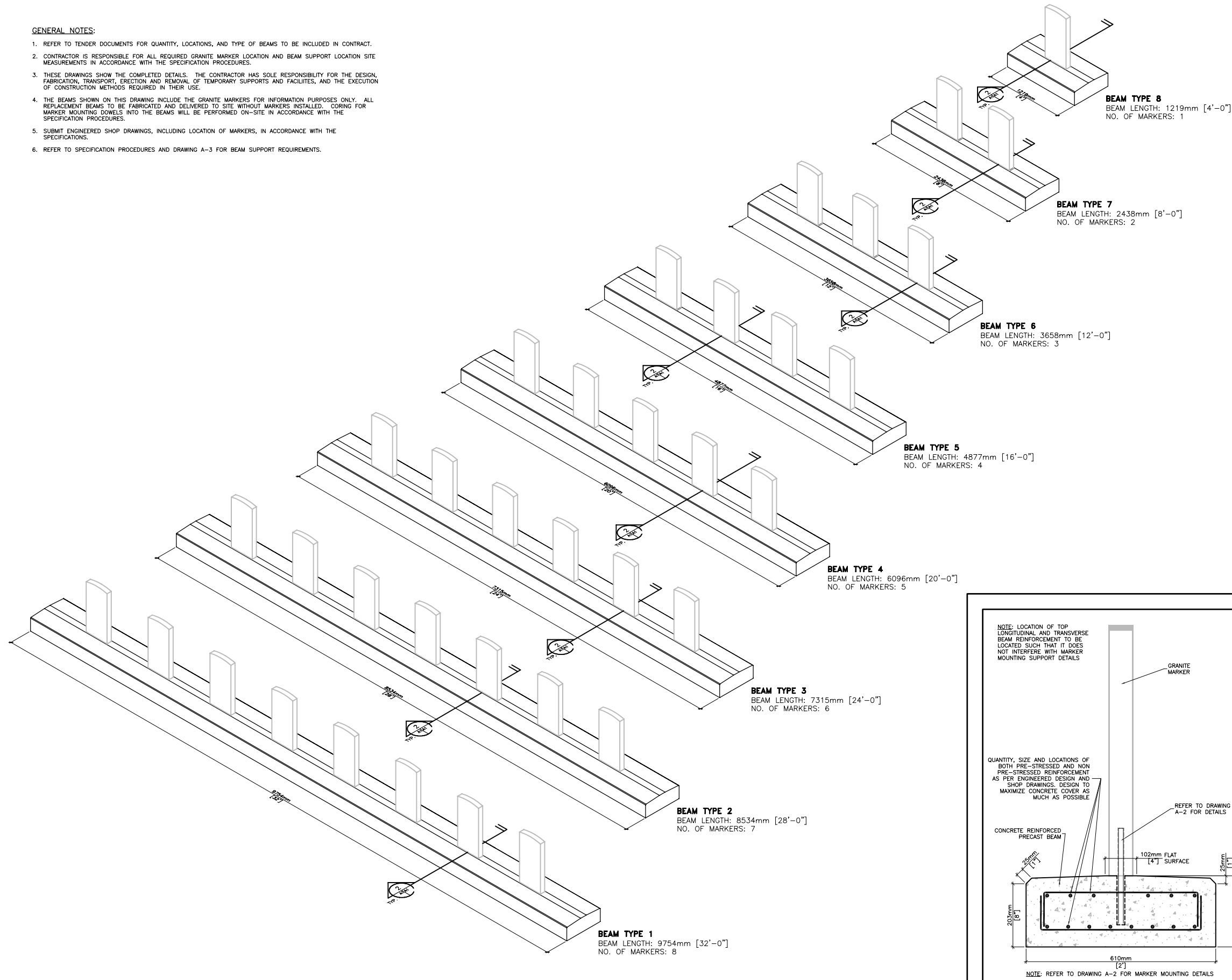


**GENERAL NOTES:**

- REFER TO TENDER DOCUMENTS FOR QUANTITY, LOCATIONS, AND TYPE OF BEAMS TO BE INCLUDED IN CONTRACT.
- CONTRACTOR IS RESPONSIBLE FOR ALL REQUIRED GRANITE MARKER LOCATION AND BEAM SUPPORT LOCATION SITE MEASUREMENTS IN ACCORDANCE WITH THE SPECIFICATION PROCEDURES.
- THESE DRAWINGS SHOW THE COMPLETED DETAILS. THE CONTRACTOR HAS SOLE RESPONSIBILITY FOR THE DESIGN, FABRICATION, TRANSPORT, ERECTION AND REMOVAL OF TEMPORARY SUPPORTS AND FACILITIES, AND THE EXECUTION OF CONSTRUCTION METHODS REQUIRED IN THEIR USE.
- THE BEAMS SHOWN ON THIS DRAWING INCLUDE THE GRANITE MARKERS FOR INFORMATION PURPOSES ONLY. ALL REPLACEMENT BEAMS TO BE FABRICATED AND DELIVERED TO SITE WITHOUT MARKERS INSTALLED. CORING FOR MARKER MOUNTING DOWELS INTO THE BEAMS WILL BE PERFORMED ON-SITE IN ACCORDANCE WITH THE SPECIFICATION PROCEDURES.
- SUBMIT ENGINEERED SHOP DRAWINGS, INCLUDING LOCATION OF MARKERS, IN ACCORDANCE WITH THE SPECIFICATIONS.
- REFER TO SPECIFICATION PROCEDURES AND DRAWING A-3 FOR BEAM SUPPORT REQUIREMENTS.



**1 ISOMETRIC VIEWS OF REINFORCED PRECAST CONCRETE BEAM LENGTHS**  
SCALE 1:20

**2 TYPICAL SECTION THROUGH REINFORCED PRECAST CONCRETE BEAM**  
SCALE 1:20

**KEY PLAN PLAN-REPÈRE**

06		
05		
04	REVISED FINAL SUBMISSION	2008/07/28
03	100% FINAL SUBMISSION	2008/01/20
02	99% SUBMISSION	2007/12/13
01	FOR QUALITY REVIEW	2007/12/10

revision \_\_\_\_\_ date \_\_\_\_\_

A	A detail no. / no. du détail	A
B	B key location / empl. clé	B/C
C	C detail location / empl. du détail	

project \_\_\_\_\_ projet \_\_\_\_\_

**BROOKSIDE CEMETERY MARKER MOUNTING BEAM REPLACEMENT**

WINNIPEG, MANITOBA

drawing \_\_\_\_\_ dessin \_\_\_\_\_

**REINFORCED PRECAST CONCRETE BEAM DETAILS**

designed M. McDEVITT conçu

date 2007/11/19

drawn C. CHANDLER dessiné

date 2007/11/19

reviewed D. STEPHENSON examiné

date \_\_\_\_\_

approved \_\_\_\_\_ approuvé

date \_\_\_\_\_

tender WAYNE RAMSEY soumission

Project Manager / Administrateur de projets

project no. 116449 no. du projet

drawing no. \_\_\_\_\_ no. du dessin

