

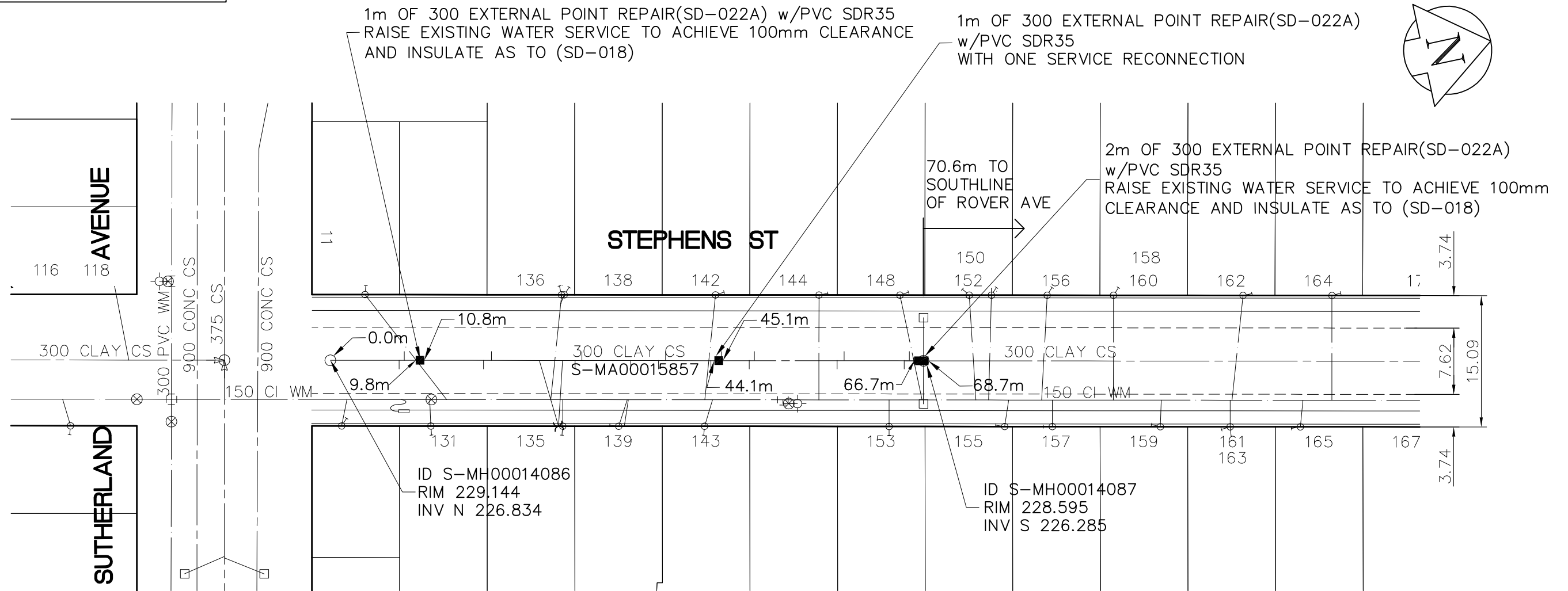
**NOTES:**

1. CONTRACTOR TO VERIFY LIMITS OF SEWER REPAIRS PRIOR TO EXCAVATION BY MEANS OF VIDEO INSPECTION.
2. CONTRACTOR TO PROVIDE VIDEO INSPECTION OF SEWER SERVICES WITHIN LIMITS OF REPAIR IN PRESENCE OF CONTRACT ADMINISTRATOR TO DETERMINE IF SERVICE RENEWAL IS REQUIRED.
3. ALL BACKFILL TO BE CLASS 5 BACKFILL UNDER BOULEVARDS AND CLASS 3 UNDER OR WITHIN 1.0m OF PAVEMENTS AND SIDEWALKS.

WATER SERVICE INFORMATION				
ADDRESS	SIZE/TYPE	S.C. SHORT AND LONG MEASUREMENT	CORP LOCATION	REMARKS
11 SUTHERLAND AVE. RESIDENTIAL	19mm COPPER	0.91m SNL OF S WINDOW 6.10m NNL OF SUTHERLAND	0.61m N OF S.C.	
148 STEPHENS ST. RESIDENTIAL	19mm COPPER	1.13m SNL OF HOUSE 67.51m NNL OF SUTHERLAND	0.76m N OF S.C.	WATER TAPP OPP SIDE OF MAIN

SEWER JUNCTION INFORMATION FROM VIDEO INPECTION S-MA00015857	
DISTANCE FROM S-MH00014086	
9.8m NORTH - 150mm CONNECTION EAST -	
44.9m NORTH - 150mm CONNECTION EAST -	
66.7m NORTH - 150mm CONNECTION EAST -	

SEWER SERVICE INFORMATION		
ADDRESS	SIZE	R DIST JUNCTION TIE
142 STEPHENS RESIDENTIAL		3.93 S of NL 44.23 N MH00014086



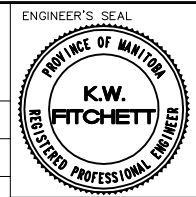
**LEGEND**

52.0 MEASUREMENT TO REPAIR FROM REFERENCE MH SHOWN THUS... 0.0

**METRIC**  
WHOLE NUMBERS INDICATE MILLIMETRES  
DECIMALIZED NUMBERS INDICATE METRES

**APEGM**  
Certificate of Authorization  
Earth Tech Canada Inc.  
No. 730

<b>B.M.</b> N.W. COR. Sutherland Ave. & Gomez St., Brass plug in Conc. pile (to hardpan), on N.L. of Sutherland Ave., & 7.4 m W. of C.L. Pav't. of Gomez St.			
DESIGNED BY	PL	CHECKED BY	PL
DRAWN BY	JP	APPROVED BY	KWF
0 ISSUED FOR TENDER 2008/06/01 PL A ISSUED FOR REVIEW 2008/07/16 PL		HOR. SCALE: 1:500 VERTICAL: RELEASED FOR CONSTRUCTION BY: K. ZUREK	
NO. REVISIONS DATE BY		DATE 2008/03/31 DATE 2008/08/07	



**THE CITY OF WINNIPEG**  
Winnipeg WATER AND WASTE DEPARTMENT

2008 SEWER RENEWALS	SHEET OF 8 16
STEPHENS ST BETWEEN SUTHERLAND AVE AND ROVER AVE	CITY DRAWING NUMBER 8659