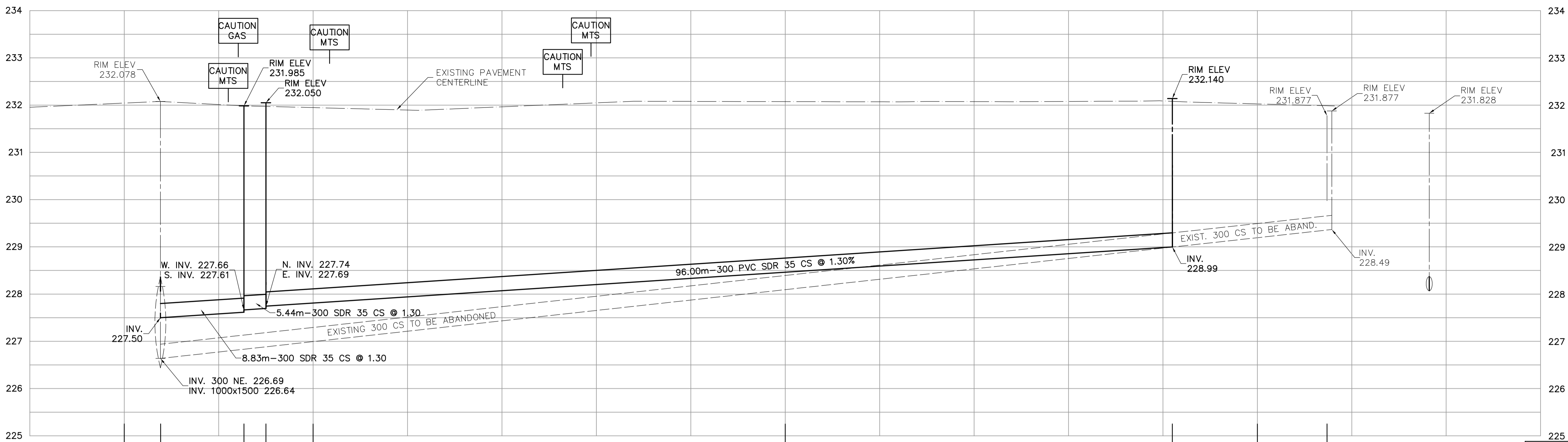
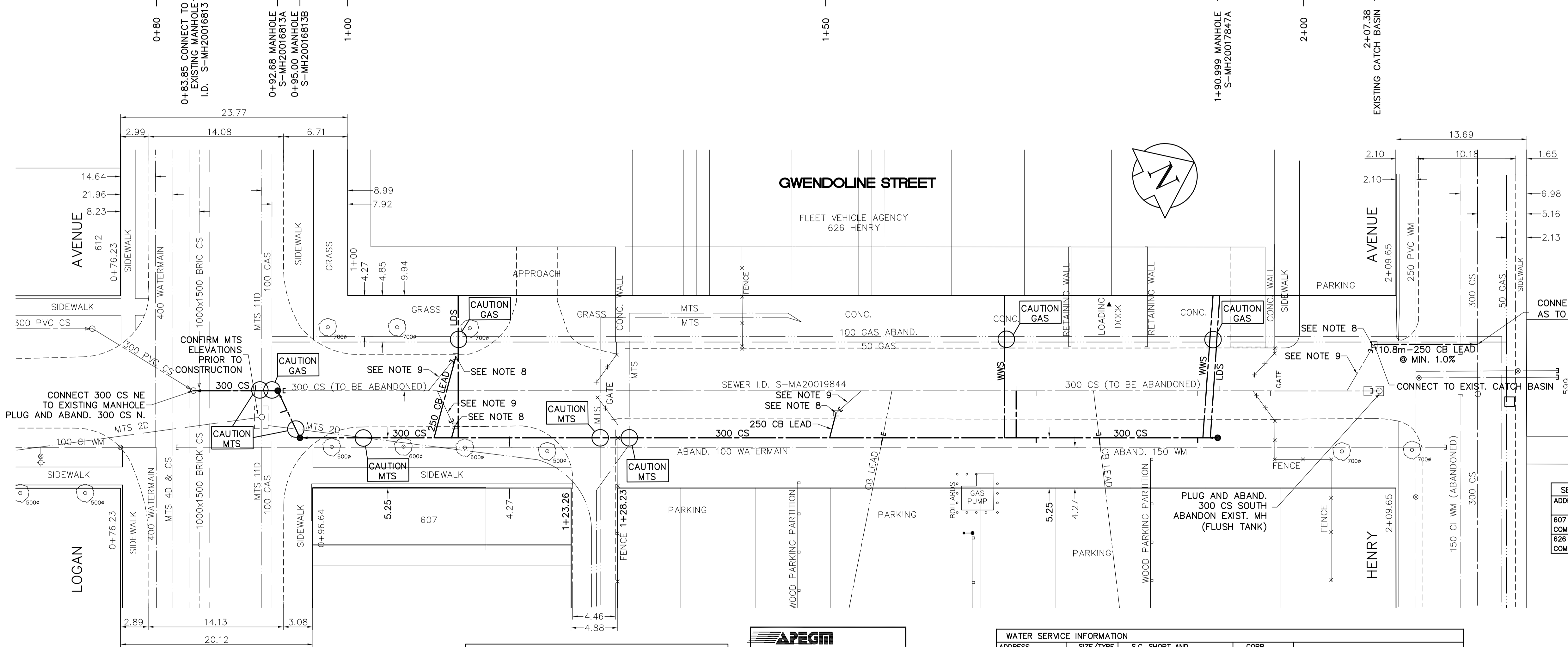


SHEET: CSM-100-01 (1/2008) FILE NAME: L:\wps\104450\104450.dwg PLOT DATE: 2008/07/16 PLOT TIME: 11:21am



SEWER JUNCTION INFORMATION FROM VIDEO INSPECTION S-MA20019844	
DISTANCE FROM S-MH20017847A	
3.4m SOUTH - 150mm CONNECTION EAST -	
11.4m SOUTH - 150mm CONNECTION WEST -	
16.7m SOUTH - 150mm CONNECTION WEST -	
17.4m SOUTH - 150mm CONNECTION EAST -	
19.6m SOUTH - 150mm CONNECTION EAST -	
29.9m SOUTH - 150mm CONNECTION EAST -	
35.9m SOUTH - 150mm CONNECTION WEST -	
38.0m SOUTH - 150mm CONNECTION WEST -	
39.2m SOUTH - 150mm CONNECTION EAST -	
51.0m SOUTH - 150mm CONNECTION EAST -	
54.2m SOUTH - 150mm CONNECTION WEST -	
DISTANCE FROM S-MH20016813	
6.50m NORTH - 150mm CONNECTION WEST -	
9.80m NORTH - 150mm CONNECTION EAST -	
24.6m NORTH - 150mm CONNECTION WEST -	
25.5m NORTH - 150mm CONNECTION EAST -	
27.7m NORTH - 150mm CONNECTION WEST -	

NOTE: EXISTING SHORT SIDE SERVICES SHALL BE INSPECTED IN THE FIELD AND RECONNECTION MADE AT THE FACE OF SIDEWALK UNLESS THE CONDITION OF THE SERVICE WARRANTS REPLACEMENT TO THE PROPERTY LINE AND IS APPROVED BY CONTRACT ADMINISTRATOR.



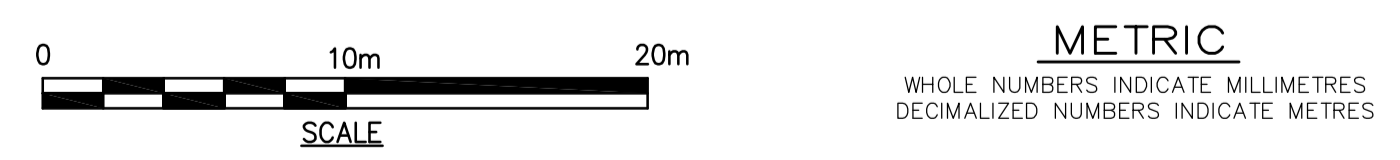
SEWER SERVICE INFORMATION			
ADDRESS	SIZE	R DIST	JUNCTION TIE
607 LOGAN AVENUE	150mm	8.53 W of EL of BLDG	COMMERCIAL
626 HENRY AVENUE		73.76 W of MH @ GUNNELL ST.	COMMERCIAL
			NO SERVICE INFORMATION

- CONSTRUCTION NOTES:
1. ALL WORK AND MATERIALS SHALL CONFORM TO THE CITY OF WINNIPEG STANDARD SPECIFICATIONS.
  2. INSTALL SEWER BY TRENCHLESS METHODS.
  3. ALL SEWER SERVICES SHALL BE 150 PVC SDR 35.
  4. ALL AUGER SHAFTS SHALL HAVE CLASS 3 BACKFILL UNDER PAVED SURFACES AND CLASS 5 BACKFILL (GRANULAR BACKFILL TO 300mm ABOVE SERVICE) IN BOULEVARD AREAS.
  5. EXIST. COMBINED SEWER TO BE ABANDONED AND FILLED WITH FLOWABLE FILL.
  6. AUGER NEW SEWER SERVICES TO ALL LOTS.
  7. ALL PIPE IN SHAFTS SHALL BE BEDDED IN CLEAN STONE BEDDING.
  8. INSTALL 250 LEAD AND CONNECT TO EXISTING CATCH BASIN.
  9. PLUG AND ABANDON EXISTING CB LEAD.

NOTE: PROPOSED SEWER SERVICES SHOWN FOR SCHEMATIC PURPOSES ONLY. CONTRACTOR SHALL LOCATE EXISTING SEWER SERVICES AT PROPERTY LINE PRIOR TO CONSTRUCTION. LOCATION OF NEW SERVICES TO BE FIELD DETERMINED AND APPROVED BY CONTRACT ADMINISTRATOR.

**APEGM**  
Certificate of Authorization  
Earth Tech Canada Inc.  
No. 730

WATER SERVICE INFORMATION				
ADDRESS	SIZE/TYPER	S.C. SHORT AND LONG MEASUREMENT	CORP LOCATION	REMARKS
607 LOGAN COMMERCIAL	19mm COPPER	8.53m WEL OF BUILDING 73.76m W OF MH @ GUNNELL	NOT KNOWN	RENEWED AND CONN TO NEW WM 07/24/85
626 HENRY FIRE DOMESTIC	150mm POLY	72.8m WEL OF BLDG 185.8m EEL OF SHERBROOK	OPP. SC	RENEWED AND CONN TO NEW WM (NOT KNOWN)



150 mm W.M.	150 mm W.M.	HYDRO	150 mm W.M.	WATERMAIN	150 mm W.M.
HYDRANT	HYDRANT	TELEPHONE	HYDRANT	HYDRANT	HYDRANT
VALVE	VALVE	CONCRETE	VALVE	VALVE	VALVE
LAND DRAINAGE SEWER	LAND DRAINAGE SEWER	ASPHALT	LAND DRAINAGE SEWER	LAND DRAINAGE SEWER	LAND DRAINAGE SEWER
WASTEWATER SEWER	WASTEWATER SEWER	PROPERTY LINE	WASTE WATER SEWER	WASTE WATER SEWER	WASTE WATER SEWER
MANHOLE	MANHOLE	SURVEY BAR	MANHOLE	MANHOLE	MANHOLE
CATCH BASIN	CATCH BASIN	CURB STOP	CATCH BASIN	CATCH BASIN	CATCH BASIN
CURB INLET	CURB INLET	TREE	CURB INLET	CURB INLET	CURB INLET
JUNCTIONS	JUNCTIONS	ANODE	JUNCTIONS	JUNCTIONS	JUNCTIONS
CULVERT	CULVERT	CONCRETE SIDEWALK	CULVERT	CULVERT	CULVERT
GAS	GAS	FENCE	GAS	GAS	GAS
EXISTING	LEGEND - PLAN	PROPOSED	EXISTING	LEGEND - PROFILE	PROPOSED

**LOCATION APPROVED UNDERGROUND STRUCTURES**

SUPV. U/G STRUCTURES COMMITTEE DATE

NOTE: LOCATION OF UNDERGROUND STRUCTURES AS SHOWN ARE BASED ON THE BEST INFORMATION AVAILABLE, BUT NO GUARANTEE IS GIVEN THAT ALL EXISTING UTILITIES ARE SHOWN OR THAT THE GIVEN LOCATIONS ARE EXACT. CONFIRMATION OF EXISTENCE AND EXACT LOCATION OF ALL SERVICES MUST BE OBTAINED FROM THE INDIVIDUAL UTILITIES BEFORE PROCEEDING WITH CONSTRUCTION.

**EARTH TECH**

Earth Tech (Canada) Inc. Winnipeg, Manitoba 204.477.5381

DESIGNED BY: PL CHECKED BY: PL

DRAWN BY: JP APPROVED BY: KWF

HOR. SCALE: 1:250  
VERTICAL SCALE: 1:50

RELEASED FOR CONSTRUCTION BY: K.ZUREK

DATE: 2007/04/11 DATE: 2008/08/07

ENGINEER'S SEAL

PROVINCE OF MANITOBA

**K.W. FITCHETT**

REGISTERED PROFESSIONAL ENGINEER

CONSULTANT DRAWING NO. 104450-13

**THE CITY OF WINNIPEG**

Winnipeg WATER AND WASTE DEPARTMENT

**2008 SEWER RENEWALS**

GWENDOLINE STREET BETWEEN LOGAN AVENUE AND HENRY AVENUE

SHEET 14 OF 16

CITY DRAWING NUMBER **8665**