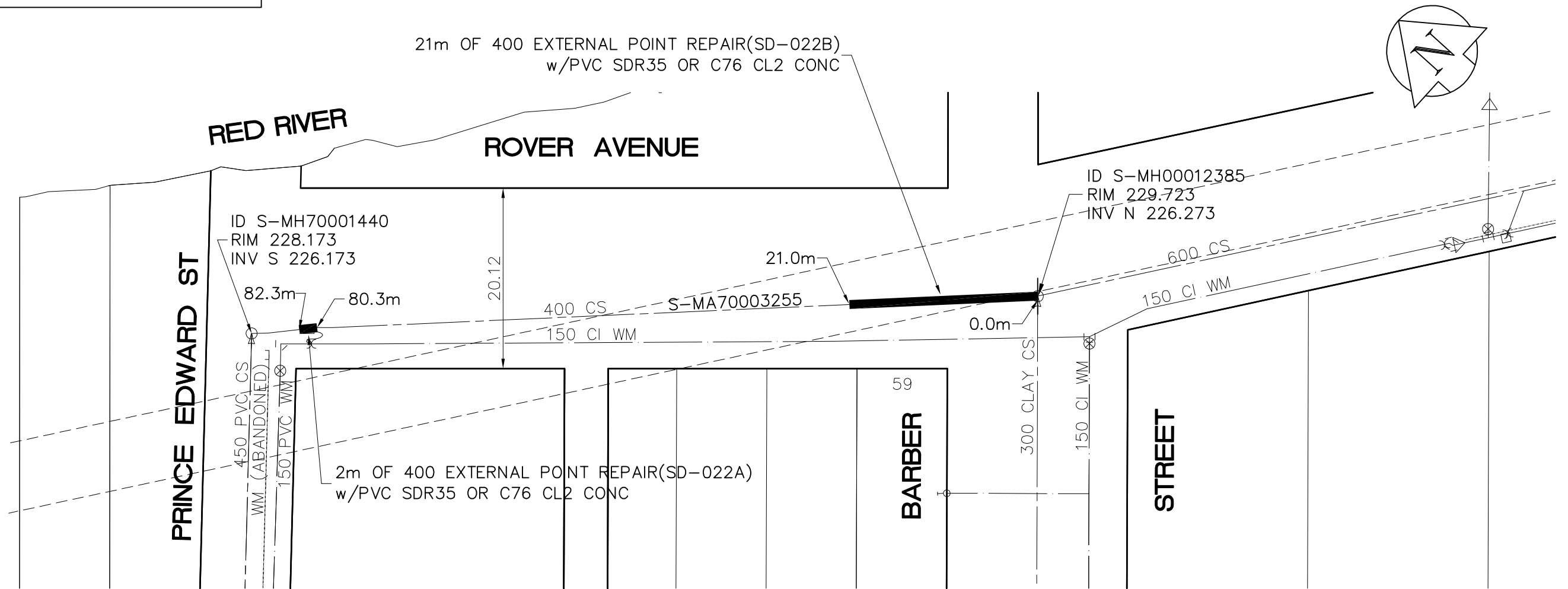


NOTES:  
 1. CONTRACTOR TO VERIFY LIMITS OF SEWER REPAIRS PRIOR TO EXCAVATION BY MEANS OF VIDEO INSPECTION.  
 2. CONTRACTOR TO PROVIDE VIDEO INSPECTION OF SEWER SERVICES WITHIN LIMITS OF REPAIR IN PRESENCE OF CONTRACT ADMINISTRATOR TO DETERMINE IF SERVICE RENEWAL IS REQUIRED.  
 3. ALL BACKFILL TO BE CLASS 5 BACKFILL UNDER BOULEVARDS AND CLASS 3 UNDER OR WITHIN 1.0m OF PAVEMENTS AND SIDEWALKS.

SEWER JUNCTION INFORMATION FROM VIDEO INSPECTION S-MA70003255
DISTANCE FROM S-MH00012385
NO SERVICES WITHIN LIMITS OF REPAIR

SEWER SERVICE INFORMATION		
ADDRESS	SIZE	R DIST JUNCTION TIE
NO INFORMATION WITHIN LIMITS OF REPAIR		



**LEGEND**

52.0 MEASUREMENT TO REPAIR FROM REFERENCE MH SHOWN THUS... 0.0

**METRIC**  
 WHOLE NUMBERS INDICATE MILLIMETRES  
 DECIMALIZED NUMBERS INDICATE METRES

**APEGM**  
 Certificate of Authorization  
 Earth Tech Canada Inc.  
 No. 730

B.M. N.W. COR. Sutherland Ave. & Gomez St., Brass plug in Conc. pile (to hardpan), on N.L. of Sutherland Ave., & 7.4 m W. ELEV. of C.L. Pavt. of Gomez St.			ENGINEER'S SEAL 			
			DESIGNED BY PL CHECKED BY PL DRAWN BY JP APPROVED BY KWF		2008 SEWER RENEWALS SHEET OF 15 16	
0 ISSUED FOR TENDER 2008/06/01 PL A ISSUED FOR REVIEW 2008/07/16 PL	HOR. SCALE: 1:500 VERTICAL:		RELEASED FOR CONSTRUCTION BY: K. ZUREK		CONSULTANT DRAWING NO. 104450-14	
NO. REVISIONS DATE BY	DATE 2008/03/31		DATE 2008/08/07		CITY DRAWING NUMBER 8666	