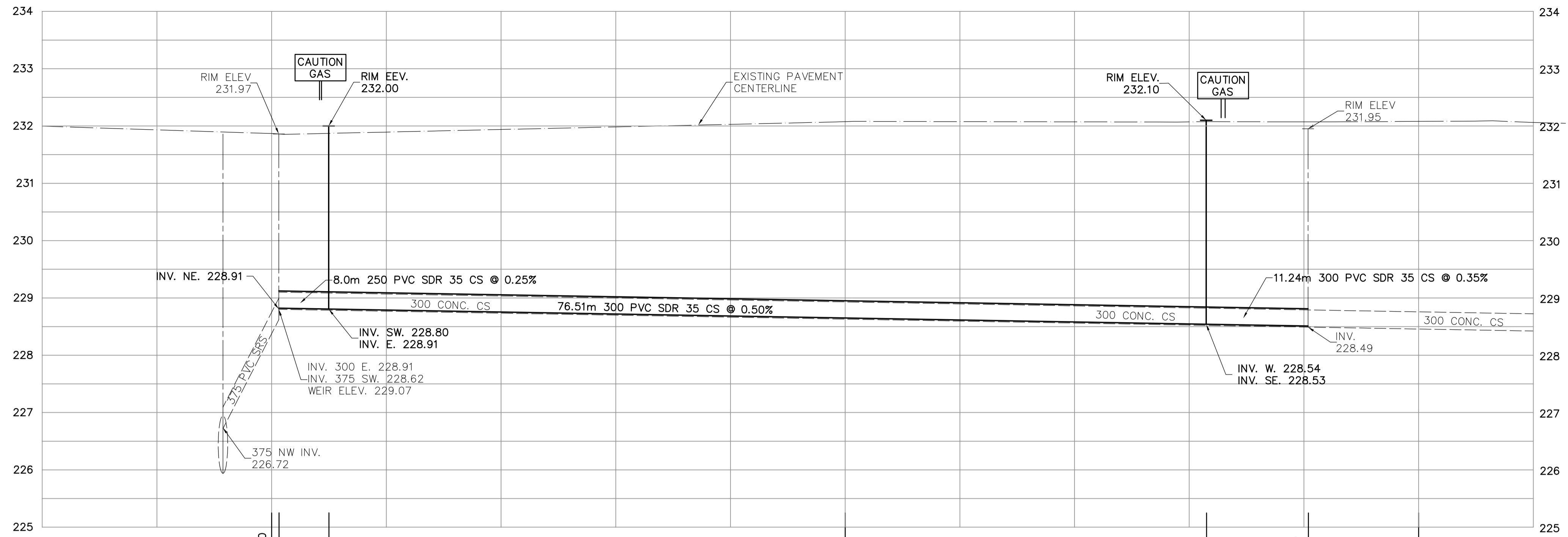


SHEET: CSM-WM-A1 (1/2008) FILE NAME: L:\Work\104450\104450-2008-08\VP1_Drawing\WM\CONTR\10-CDM-ENG.dwg PLOTTED BY: dennis.rostique LAYOUT NAME: layout

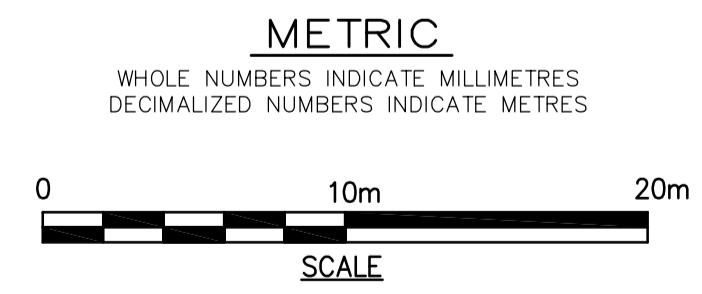
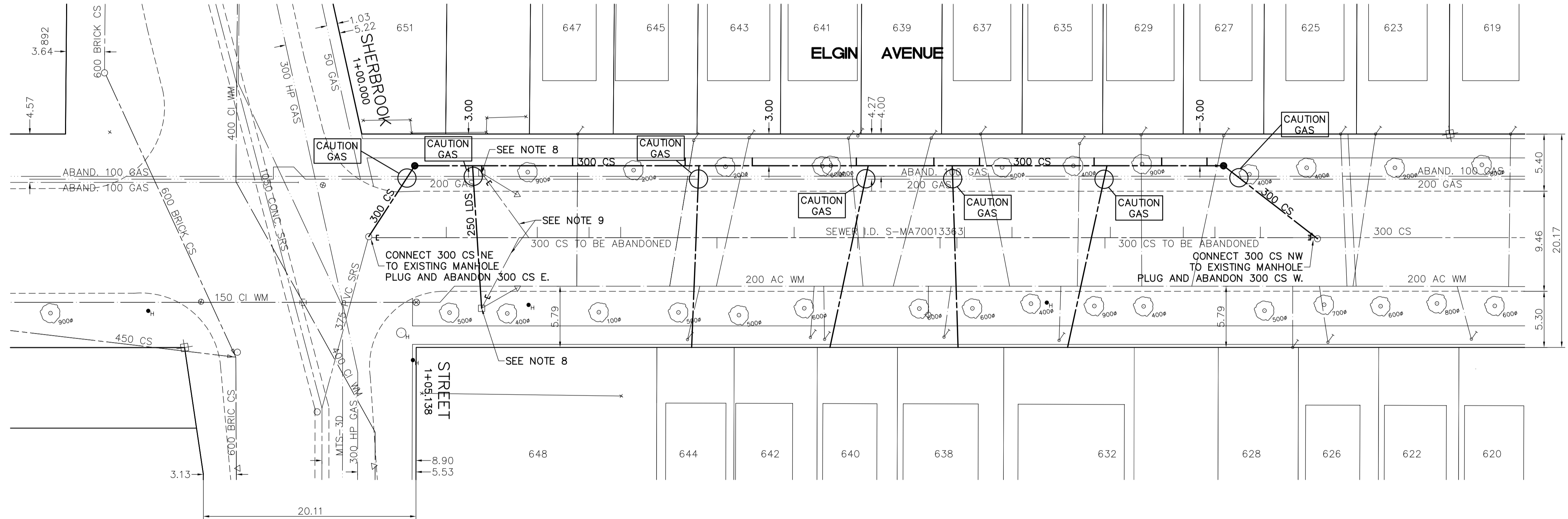


NOTE:
EXISTING SHORT SIDE SERVICES SHALL BE INSPECTED IN THE FIELD AND RECONNECTION MADE AT THE FACE OF SIDEWALK UNLESS THE CONDITION OF THE SERVICE WARRANTS REPLACEMENT TO THE PROPERTY LINE AND IS APPROVED BY CONTRACT ADMINISTRATOR.

SEWER JUNCTION INFORMATION FROM VIDEO INSPECTION S-MA70013363	
DISTANCE FROM S-MH20016676	
7.1m EAST - 150mm CONNECTION NORTH -	
14.0m EAST - 150mm CONNECTION SOUTH -	
14.9m EAST - 150mm CONNECTION NORTH -	
15.7m EAST - 150mm CONNECTION NORTH -	
20.6m EAST - 150mm CONNECTION NORTH -	
23.6m EAST - 150mm CONNECTION NORTH -	
32.7m EAST - 150mm CONNECTION SOUTH -	
40.0m EAST - 150mm CONNECTION NORTH -	
46.0m EAST - 150mm CONNECTION SOUTH -	
53.8m EAST - 150mm CONNECTION SOUTH -	
55.4m EAST - 150mm CONNECTION SOUTH -	
56.1m EAST - 150mm CONNECTION NORTH -	
60.6m EAST - 150mm CONNECTION NORTH -	
69.4m EAST - 150mm CONNECTION SOUTH -	
69.9m EAST - 150mm CONNECTION NORTH -	
76.8m EAST - 150mm CONNECTION NORTH -	
79.8m EAST - 150mm CONNECTION NORTH -	
84.1m EAST - 150mm CONNECTION NORTH -	

WATER SERVICE INFORMATION				
ADDRESS	SIZE / TYPE	S.C. SHORT AND LONG MEASUREMENT	CORP LOCATION	REMARKS
620 ELGIN AVENUE RESIDENTIAL	16mm LEAD	0.91m EWL OF HOUSE 99.97m EEL OF SHERBROOK	1.52m W of S/C	HYDRO STRAP ON DBLE SERV WITH 622
622 ELGIN AVENUE RESIDENTIAL	16mm LEAD	2.44m EEL OF HOUSE 99.97m EEL OF SHERBROOK	98.45m EEL SHERBROOK	DBL WITH 620
625 ELGIN AVENUE RESIDENTIAL	19mm COPPER	0.61m EEL OF HOUSE 93.27m EEL OF SHERBROOK	0.61m E of S/C	
626 ELGIN AVENUE RESIDENTIAL	19mm COPPER	2.13m EWL OF HOUSE	0.46m N of S/C	FORMER DBLE 628 NOW SGL
627 ELGIN AVENUE RESIDENTIAL	19mm COPPER	2.29m EWL OF BLDG 81.53m EEL OF SHERBROOK	3.05m W of S/C	SERVICE REVERSED TAPPED OVERTOP OF WM
628 ELGIN AVENUE RESIDENTIAL	19mm COPPER	1.52m EEL OF HOUSE 82.91m EEL OF SHERBROOK	OPP S/C	FORMER DBLE 626 NOW SGL
629 ELGIN AVENUE RESIDENTIAL	19mm COPPER	3.05m WEL OF HOUSE 73.76m EEL OF SHERBROOK	0.9m N of S/C	
632 ELGIN AVENUE RESIDENTIAL	13mm LEAD	4.15m EWL OF HOUSE 12.19m E 1ST HYD E SHRBRK	0.61m E of S/C	
635 ELGIN AVENUE RESIDENTIAL	19mm COPPER	1.52m WEL OF HOUSE 67.67m EEL OF SHERBROOK	OPP S/C	
637 ELGIN AVENUE RESIDENTIAL	19mm COPPER	2.74m EWL OF HOUSE 50.29m EEL OF SHERBROOK	2.74m E of S/C	
638 ELGIN AVENUE RESIDENTIAL	13mm LEAD	3.05m WEL OF HOUSE 50.29m EEL OF SHERBROOK	1.52m W of S/C	
639 ELGIN AVENUE RESIDENTIAL	19mm COPPER	0.61m EEL OF HOUSE OPP 1ST HYD E SHERBROOK	3.05m W of S/C	TAPPED ON OPP SIDE OF MAIN. CPLG 2' ON PROPERTY
640 ELGIN AVENUE RESIDENTIAL	19mm COPPER	0.55m WML OF HOUSE 38.56m EEL OF SHERBROOK	OPP S/C	
641 ELGIN AVENUE RESIDENTIAL	13mm LEAD	1.07m WEL OF HOUSE 45.87m EEL OF SHERBROOK	1.52 W of S/C	
642 ELGIN AVENUE RESIDENTIAL	19mm COPPER	1.83m EEL OF HOUSE 37.03m EEL OF SHERBROOK	0.61 E of S/C	
643 ELGIN AVENUE RESIDENTIAL	19mm COPPER	1.83m WEL OF HOUSE	OPP S/C	
644 ELGIN AVENUE RESIDENTIAL	19mm COPPER	1.83m EWL OF HOUSE 25.91m EEL OF SHERBROOK	0.91m E of S/C	
645 ELGIN AVENUE RESIDENTIAL	13mm LEAD	2.44m EEL OF HOUSE 31.55m EEL OF SHERBROOK	2.44m W of S/C	
647 ELGIN AVENUE RESIDENTIAL	19mm COPPER	1.83m WEL OF BLDG 20.42m EEL OF SHERBROOK	OPP S/C	
648 ELGIN AVENUE RESIDENTIAL	19mm LEAD	2.29m SSL OF BLDG 13.87m EEL OF ELGIN	OPP S/C	
651 ELGIN AVENUE RESIDENTIAL	16mm LEAD	OPP EL OF BLDG 20.73 WML OF SHERBROOK		

SEWER SERVICE INFORMATION		
ADDRESS	SIZE	R DIST JUNCTION TIE
NO INFORMATION WITHIN LIMITS OF REPAIR		



NOTE:
PROPOSED SEWER SERVICES SHOWN FOR SCHEMATIC PURPOSES ONLY. CONTRACTOR SHALL LOCATE EXISTING SEWER SERVICES AT PROPERTY LINE. LOCATION OF NEW SERVICES TO BE FIELD DETERMINED AND APPROVED BY CONTRACT ADMINISTRATOR.

APEGM
Certificate of Authorization
Earth Tech Canada Inc.
No. 730

- CONSTRUCTION NOTES:**
- ALL WORK AND MATERIALS SHALL CONFORM TO THE CITY OF WINNIPEG STANDARD SPECIFICATIONS.
 - INSTALL SEWER BY TRENCHLESS METHODS.
 - ALL SEWER SERVICES SHALL BE 150 PVC SDR 35.
 - ALL AUGER SHAFTS SHALL HAVE CLASS 3 BACKFILL UNDER PAVED SURFACES AND CLASS 5 BACKFILL (GRANULAR BACKFILL TO 300mm ABOVE SERVICE) IN BOULEVARD AREAS.
 - EXIST. COMBINED SEWER TO BE ABANDONED AND FILLED WITH FLOWABLE FILL.
 - AUGER NEW SEWER SERVICES TO ALL LOTS.
 - ALL PIPE IN SHAFTS SHALL BE BEDDED IN CLEAN STONE BEDDING.
 - INSTALL 250 LEAD AND CONNECT TO EXISTING CATCH BASIN.
 - PLUG AND ABANDON EXISTING CB LEAD.

150 mm W.M.	WATERMAIN	150 mm W.M.	HYDRO	150 mm W.M.	WATERMAIN	150 mm W.M.	WATERMAIN
+	HYDRANT	+	TELEPHONE	+	HYDRANT	+	HYDRANT
+	VALVE	+	CONCRETE	+	VALVE	+	VALVE
+	LAND DRAINAGE SEWER	+	ASPHALT	+	LAND DRAINAGE SEWER	+	LAND DRAINAGE SEWER
+	WASTEWATER SEWER	+	PROPERTY LINE	+	WASTE WATER SEWER	+	WASTE WATER SEWER
○	MANHOLE	○	SURVEY BAR	○	PROFILE	○	PROFILE
□	CATCH BASIN	□	CURB STOP	○	○	○	○
▽	CURB INLET	▽	TREE	○	○	○	○
+	JUNCTIONS	+	ANODE	○	○	○	○
+	CULVERT	+	CONCRETE SIDEWALK	○	○	○	○
+	GAS	+	FENCE	○	○	○	○
+	EXISTING	+	LEGEND - PLAN	+	LEGEND - PROFILE	+	LEGEND - PROFILE

LOCATION APPROVED UNDERGROUND STRUCTURES		B.M. ELEV.	
SUPPLY U/G STRUCTURES COMMITTEE	DATE	N. side William Ave. W. of Sherbrook St. Tbt in S. Conc. foundation No. 671 William Ave. (Harry Medsdy House), 5.2 m W. & 0.6 m below bricks of most S.Ely. Cor. of Bldg.	
NOTE:	LOCATION OF UNDERGROUND STRUCTURES AS SHOWN ARE BASED ON THE BEST INFORMATION AVAILABLE, BUT NO GUARANTEE IS GIVEN THAT ALL EXISTING UTILITIES ARE SHOWN OR THAT THE GIVEN LOCATIONS ARE EXACT. CONFIRMATION OF EXISTENCE AND EXACT LOCATION OF ALL SERVICES MUST BE OBTAINED FROM THE INDIVIDUAL UTILITIES BEFORE PROCEEDING WITH CONSTRUCTION.		
ISSUED FOR TENDER	2008/08/01	CHECKED BY	PL
ISSUED FOR REVIEW	2008/07/16	APPROVED BY	KWF
NO. REVISIONS	DATE BY	HOR. SCALE:	1:250
		VERTICAL SCALE:	1:50
		RELEASED FOR CONSTRUCTION BY:	K.ZUREK
		DATE	2007/04/11
		DATE	2008/08/07

EARTH TECH
A tyco INTERNATIONAL LTD. COMPANY
Earth Tech (Canada) Inc. Winnipeg, Manitoba 204.477.5381

DESIGNED BY: PL
DRAWN BY: JP

CONSULTANT DRAWING NO. 104450-15

ENGINEER'S SEAL
PROVINCE OF MANITOBA
K.W. FITCHETT
REGISTERED PROFESSIONAL ENGINEER

THE CITY OF WINNIPEG
Winnipeg WATER AND WASTE DEPARTMENT

2008 SEWER RENEWALS

ELGIN AVENUE BETWEEN SHERBROOK STREET AND KATE STREET

SHEET 16 OF 16
CITY DRAWING NUMBER 8667