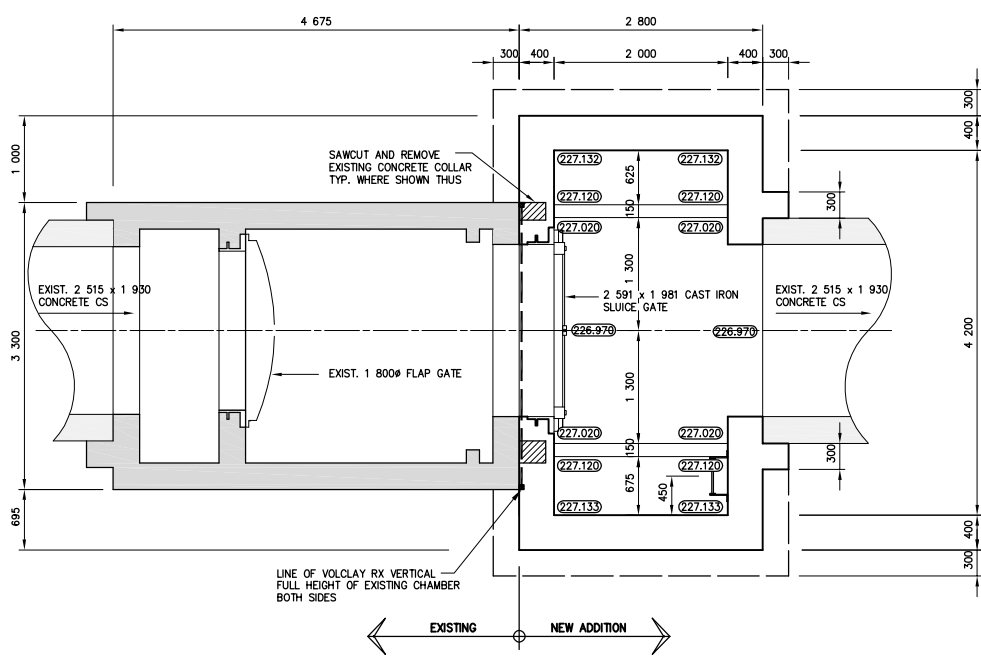
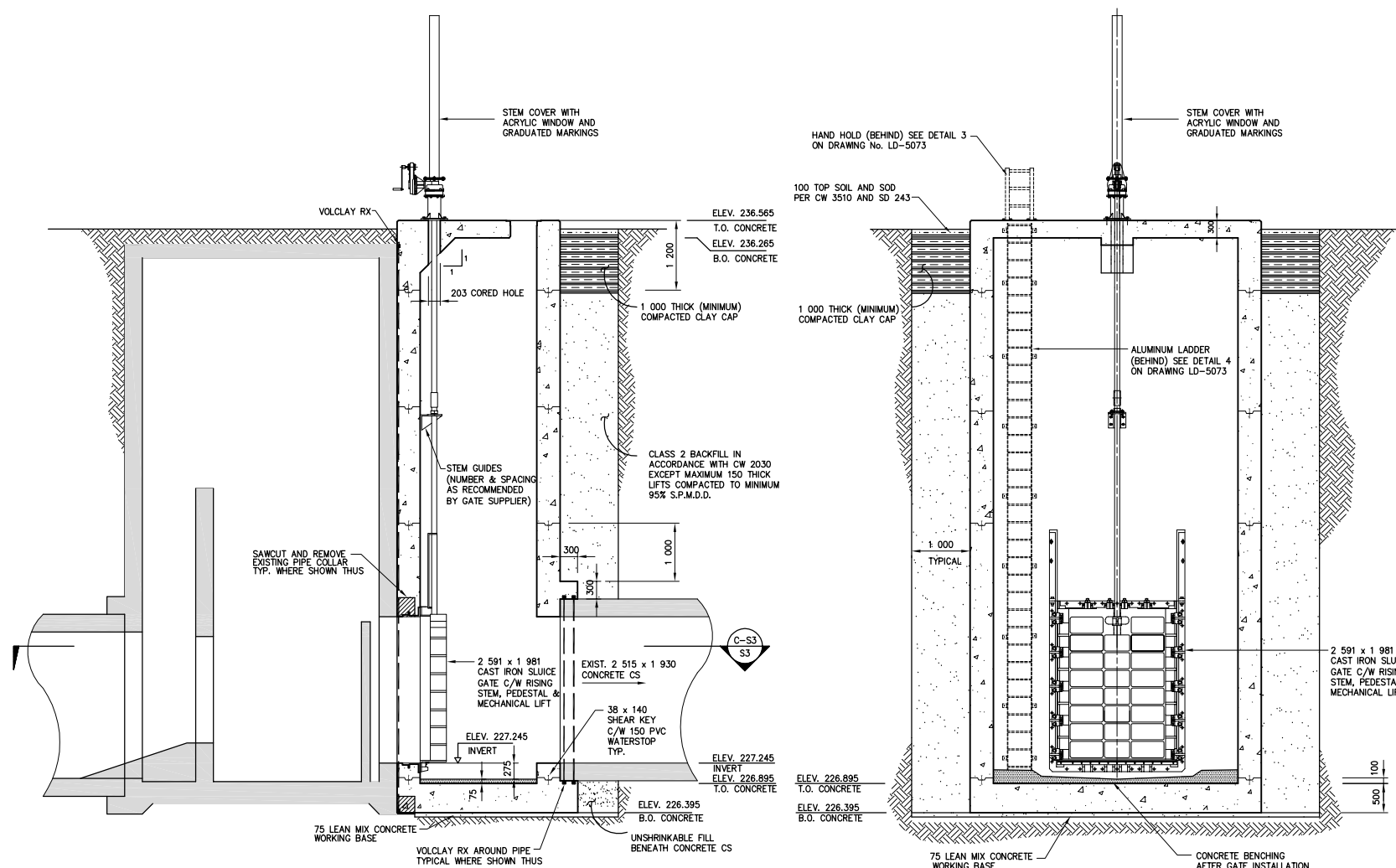


ROOF PLAN
1:40



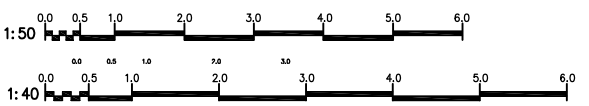
SECTION C-S3
1:40



SECTION A-S3
1:50

SECTION B-S3
1:50

NOTE: CONTRACTOR SHALL CONFIRM ACTUAL PIPE INVERT AND NOTIFY CONTRACT ADMINISTRATOR OF ANY DISCREPANCY WITH THE INVERTS SHOWN. CONTRACTOR TO CONTACT CITY OF WINNIPEG, WATER AND WASTE DEPARTMENT, FOR CURRENT GROUNDWATER ELEVATION.



METRIC
WHOLE NUMBERS INDICATE MILLIMETRES
DECIMALIZED NUMBERS INDICATE METRES

A-B
C
A = DETAIL/SECTION No.
B = DRAWING WHERE SHOWN
C = DRAWING WHERE TAKEN



 MMM Group Limited Suite 111-93 Lombard Ave. Winnipeg, MB R3B 3B1 t: 204.943.3178 f: 204.943.4948 www.mmm.ca		
DESIGNED BY: GK	CHECKED BY: JPL	2008 OPPORTUNITY 629-2008 PLOT DATE: 08 08 27
DRAWN BY: RCS	APPROVED BY: JPL	
HOR. SCALE: AS SHOWN		RELEASED FOR CONSTRUCTION
VERTICAL		DATE: 08 08 27
0 ISSUED FOR CONSTRUCTION	08.08.27 GK	
NO. REVISIONS	DATE BY	DATE

THE CITY OF WINNIPEG
 WATER AND WASTE DEPARTMENT
 2008 OUTFALL GATE CHAMBER CONSTRUCTION AND UPGRADES
CONWAY STREET CS OUTFALL GATE CHAMBER CONCRETE DETAILS

CONSULTANT DRAWING NUMBER 42012-S3
SHEET 5 OF 11
CITY DRAWING NUMBER LD-5067

Aug 26, 2008 - 9:46am
 P:\2008 - 0208\2012 2008 Outfall Gate Chamber Construction and Upgrades\Drawings\Conway\0212 Conway S3 & S4 Concrete & Reinforcing.dwg - Job Concrete