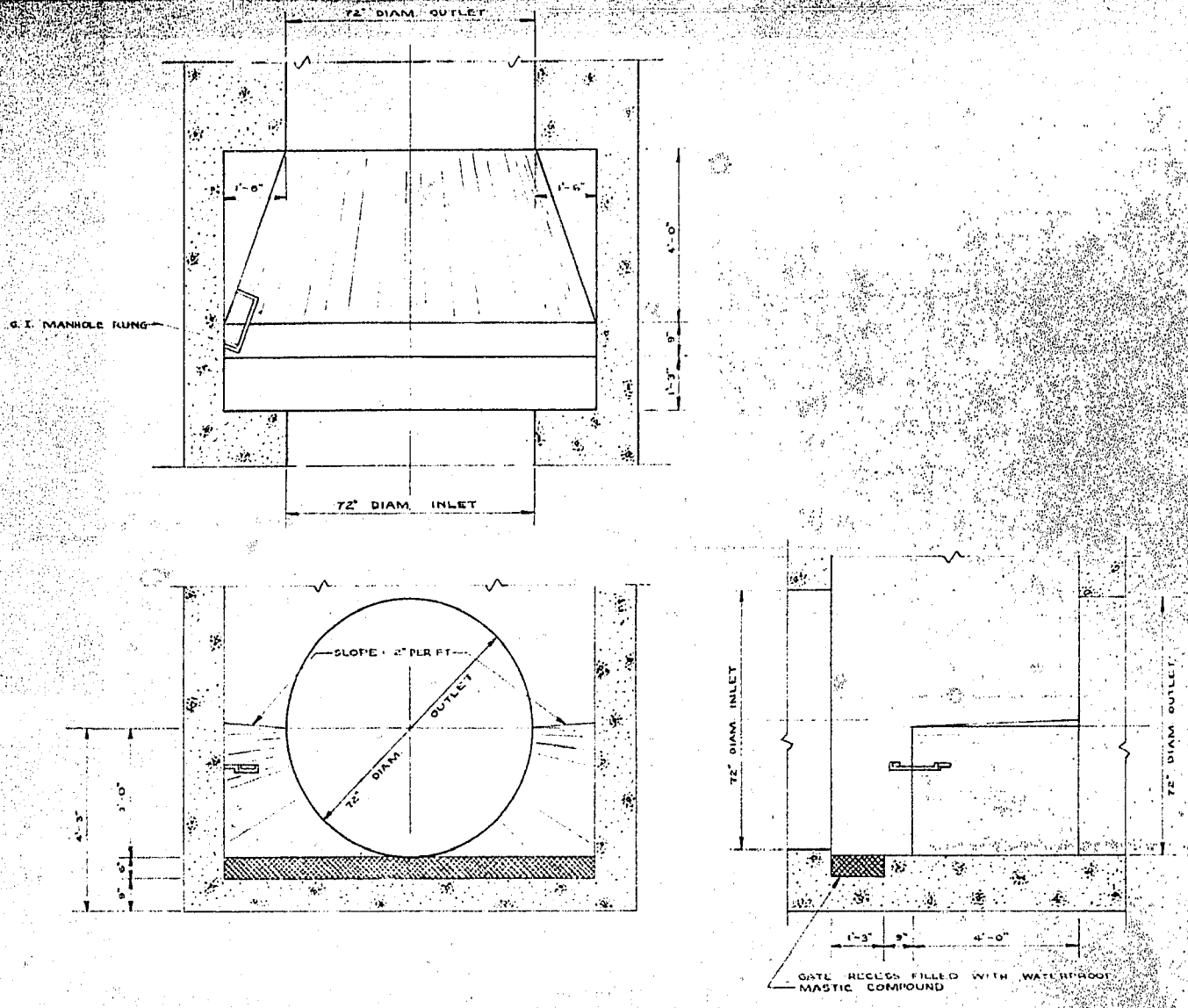
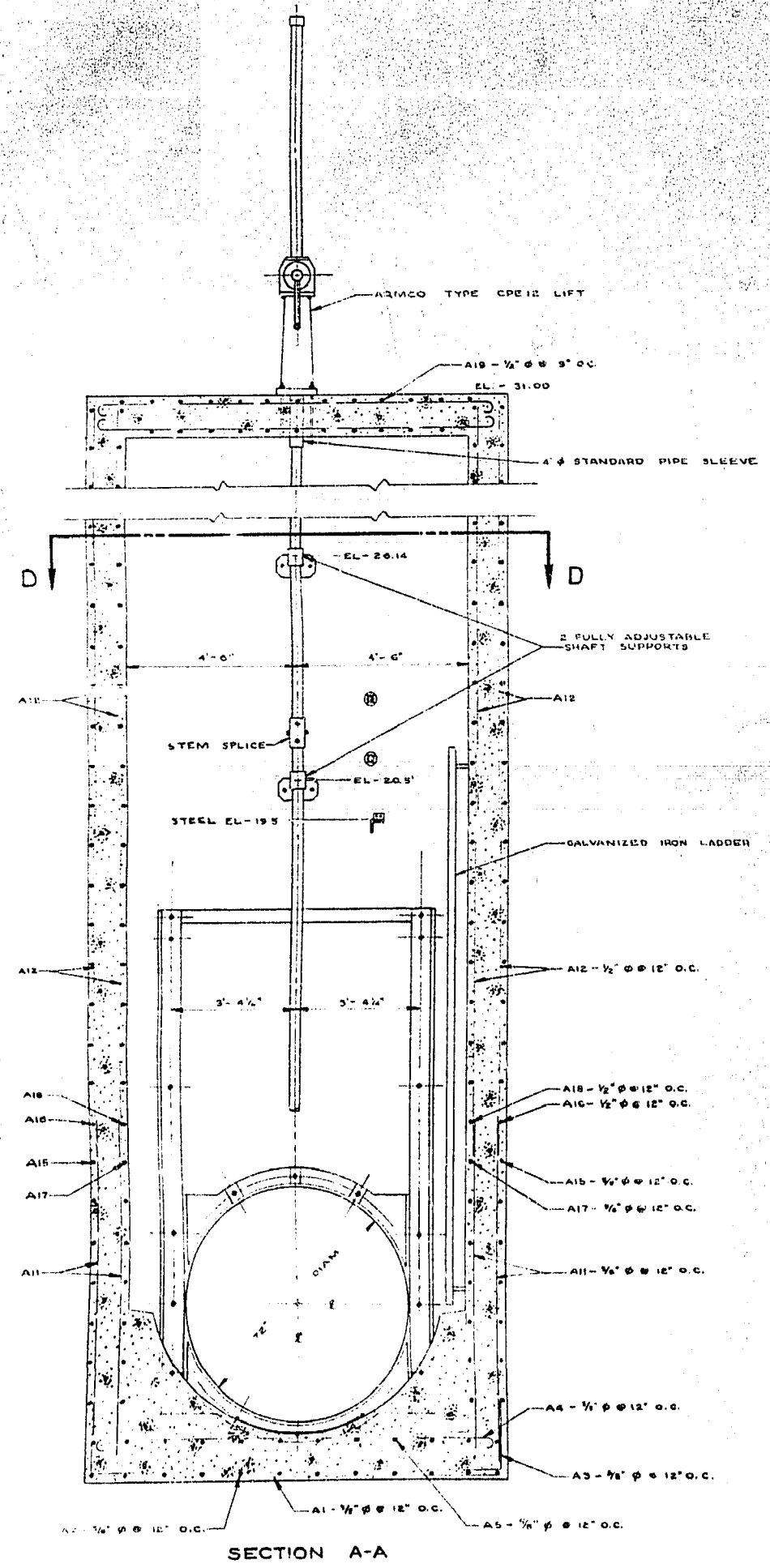


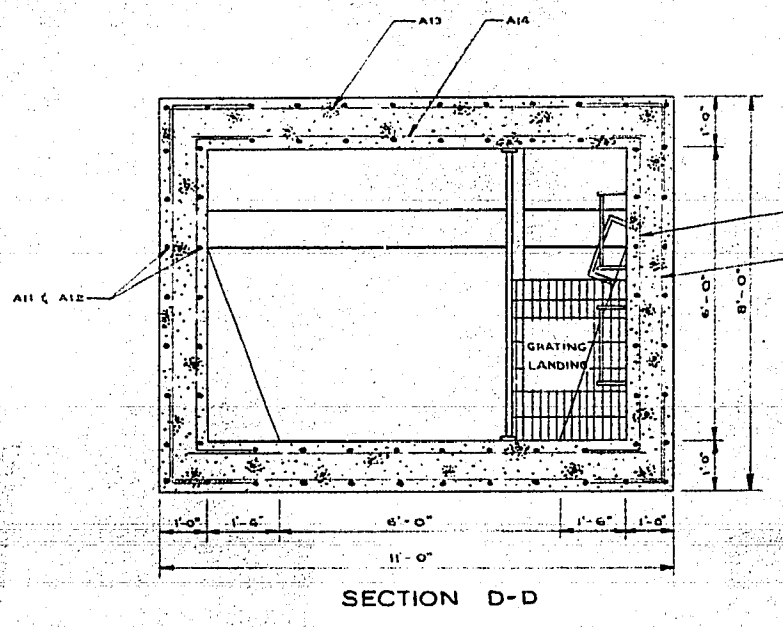
SITE PLAN
SCALE: 1" = 10'



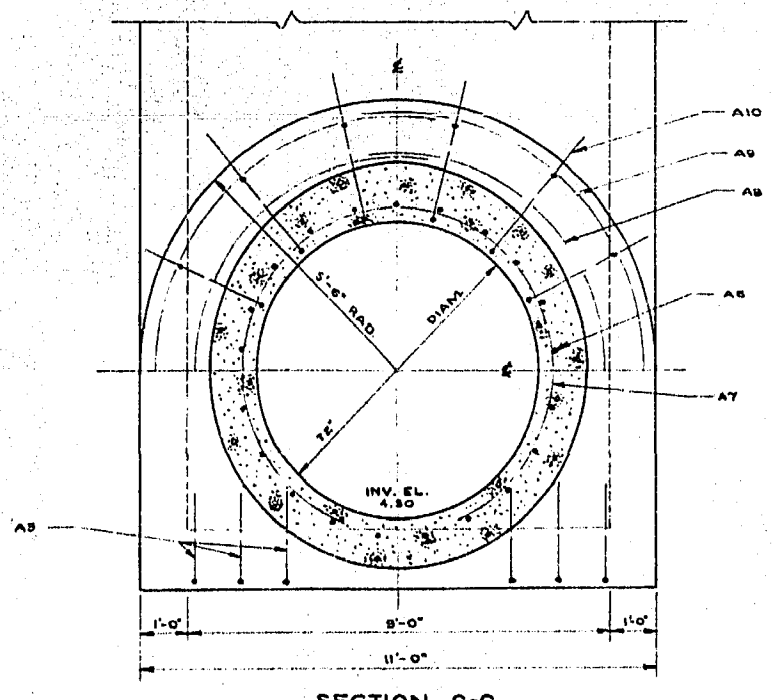
DETAIL OF UNREINFORCED CONCRETE TRANSITION SECTION TO OUTLET



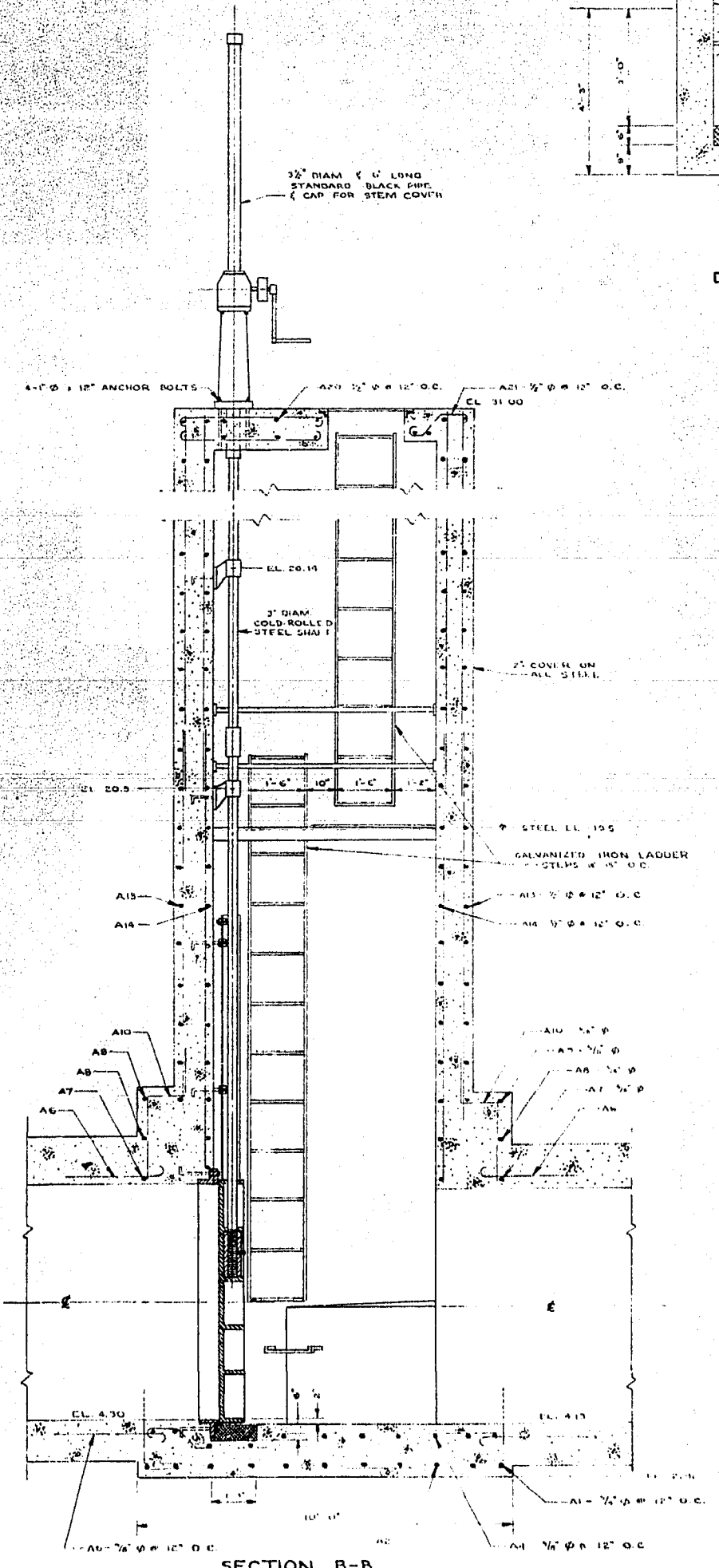
SECTION A-A



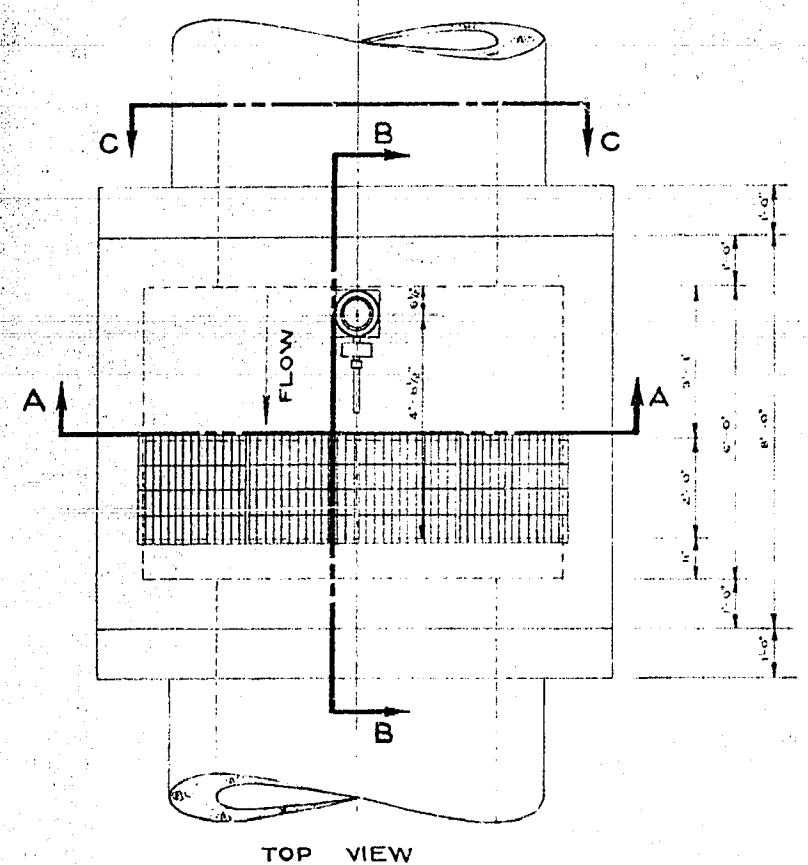
SECTION D-D



SECTION C-C



SECTION B-B



TOP VIEW

- GATE**
ARMCO 1 1/2" SQ. 100 SLIDE GATE
COMPLETE WITH:
1. ANGLE GUIDES
 2. SEATING RING
 3. BRONZE SEATING FACLS
 4. 3" DIAM. COLD-ROLLED STEEL SHAFT
 5. FULLY ADJUSTABLE SHAFT SUPPORTS
 6. BRONZE LIFTING NUT
 7. ALL REQ'D ANCHOR BOLTS
 8. ARMCO TYPE CPE-12 LIFT WITH 12:1 GEAR RATIO

MUNICIPALITY OF FORT GARRY

SOMERSET AVE. STORM SEWER

GATE CHAMBER

DRAWN BY J.A.D.
CHECKED BY A.A.H.
SHEET 7 OF 9
DATE Jan. 1958

UNDERWOOD McLELLAN & ASSOCIATES LTD.
CONSULTING PROFESSIONAL ENGINEERS
WINNIPEG SASKATOON CALGARY

SCALE: 3/8" = 1'-0"